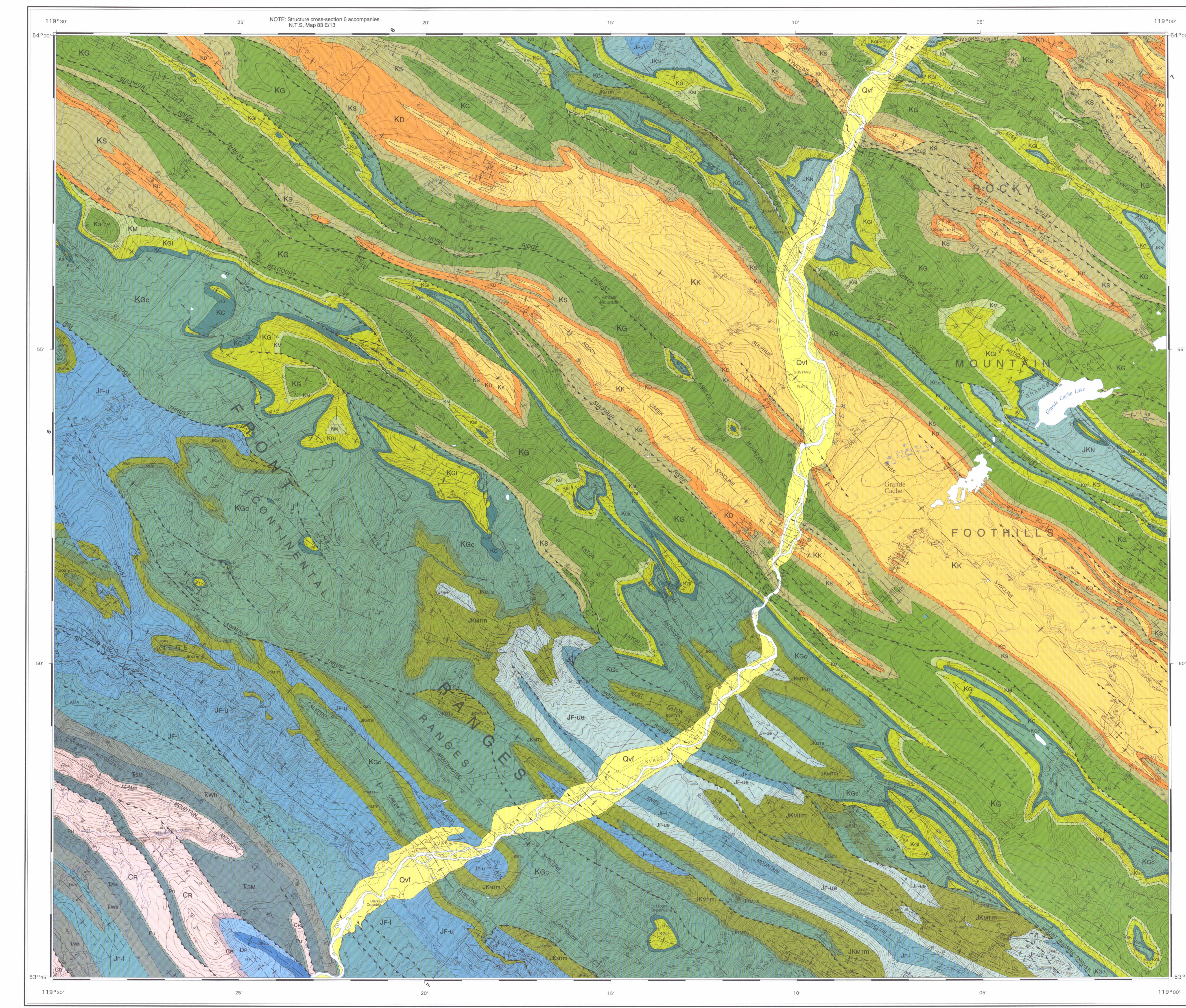
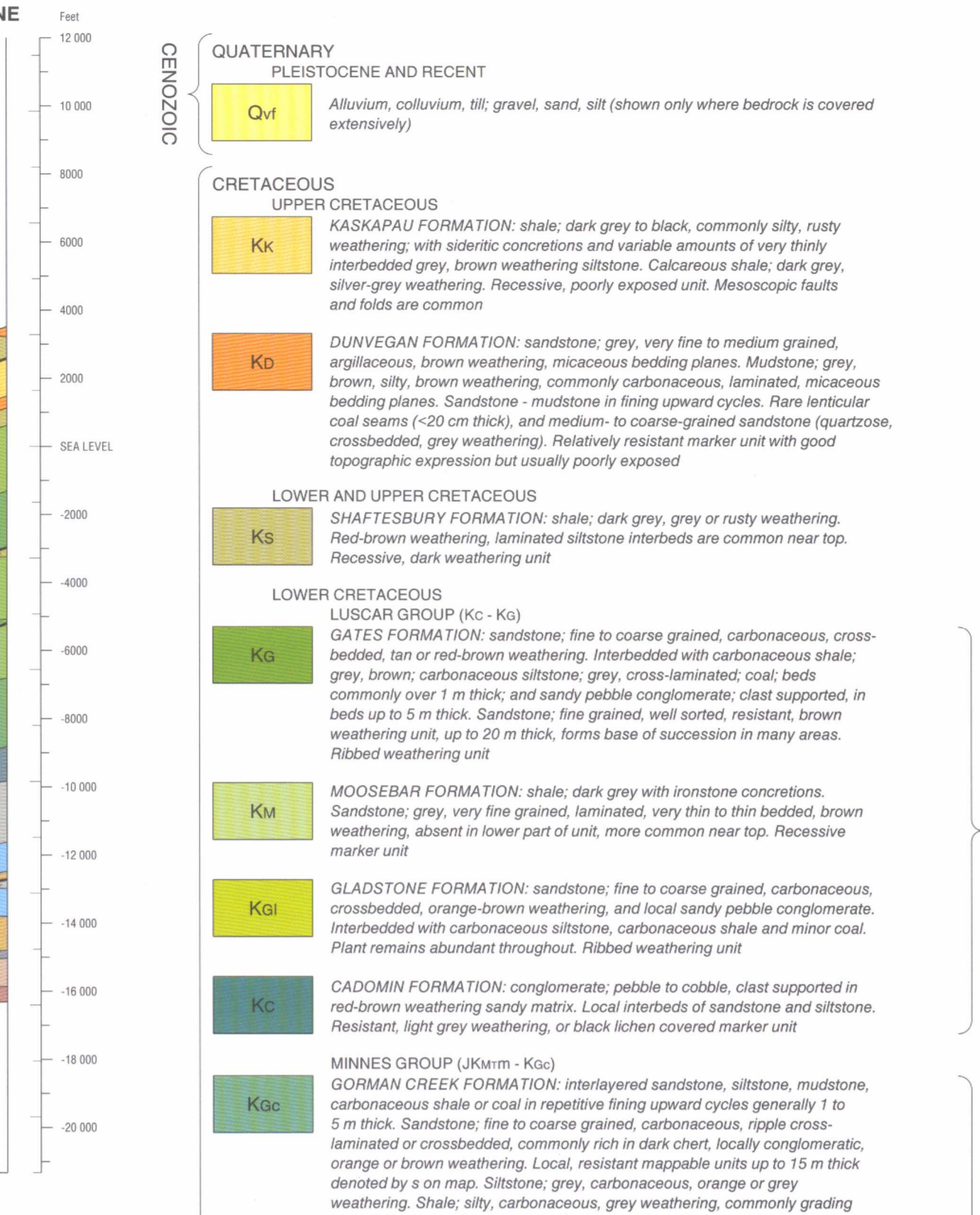


Structure cross-section 7

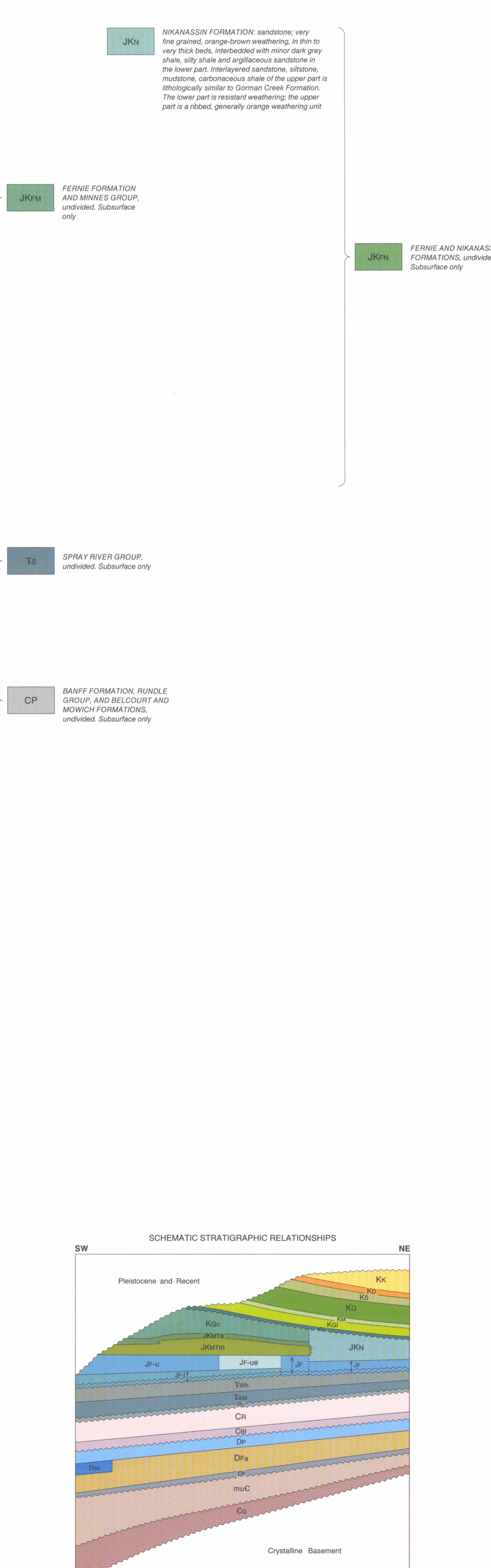
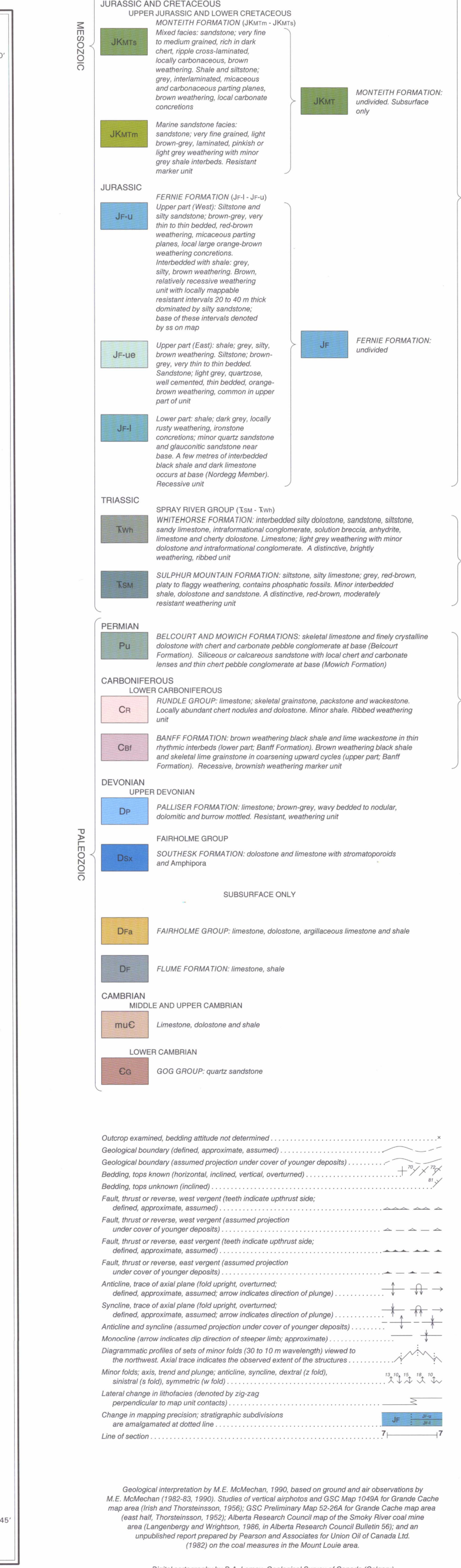


MAP 1904A GEOLOGY GRANDE CACHE WEST OF SIXTH MERIDIAN ALBERTA

Scale 1:50 000 - Echelle 1:50 000

Geological interpretation by M.E. McMechan, 1990, based on ground and air observations by M.E. McMechan (1982 & 1983), studies of vertical sections and GSC Map 1048 for Grande Cache area (Irish and Thompson, 1966), GSC Preliminary Map 52-264 for Grande Cache map area (Irish and Thompson, 1962), Alberta Research Council map of the Smoky River coal mine area (Langenberg and Wright, 1986), in Alberta Research Council Bulletin 56, and an unpublished report prepared by Pearson and Associates for Union Oil of Canada Ltd. (1982) on the coal measures in the Mount Loos area.

This map has been produced from a scanned version of the original map. Reproduction par numérisation d'une carte sur papier.



Geological interpretation by M.E. McMechan, 1990, based on ground and air observations by M.E. McMechan (1982 & 1983), studies of vertical sections and GSC Map 1048 for Grande Cache area (Irish and Thompson, 1966), GSC Preliminary Map 52-264 for Grande Cache map area (Irish and Thompson, 1962), Alberta Research Council map of the Smoky River coal mine area (Langenberg and Wright, 1986), in Alberta Research Council Bulletin 56, and an unpublished report prepared by Pearson and Associates for Union Oil of Canada Ltd. (1982) on the coal measures in the Mount Loos area.

Geological interpretation by M.E. McMechan, 1990, based on ground and air observations by M.E. McMechan (1982 & 1983), studies of vertical sections and GSC Map 1048 for Grande Cache area (Irish and Thompson, 1966), GSC Preliminary Map 52-264 for Grande Cache map area (Irish and Thompson, 1962), Alberta Research Council map of the Smoky River coal mine area (Langenberg and Wright, 1986), in Alberta Research Council Bulletin 56, and an unpublished report prepared by Pearson and Associates for Union Oil of Canada Ltd. (1982) on the coal measures in the Mount Loos area.



Map Library / Cartothèque, ESIC CIST, APR 1 1997, NOT TO BE TAKEN FROM LIBRARY / NE PAS SORTIR DE LA BIBLIOTHÈQUE, Earth Sciences Sector / Secteur des sciences de la Terre