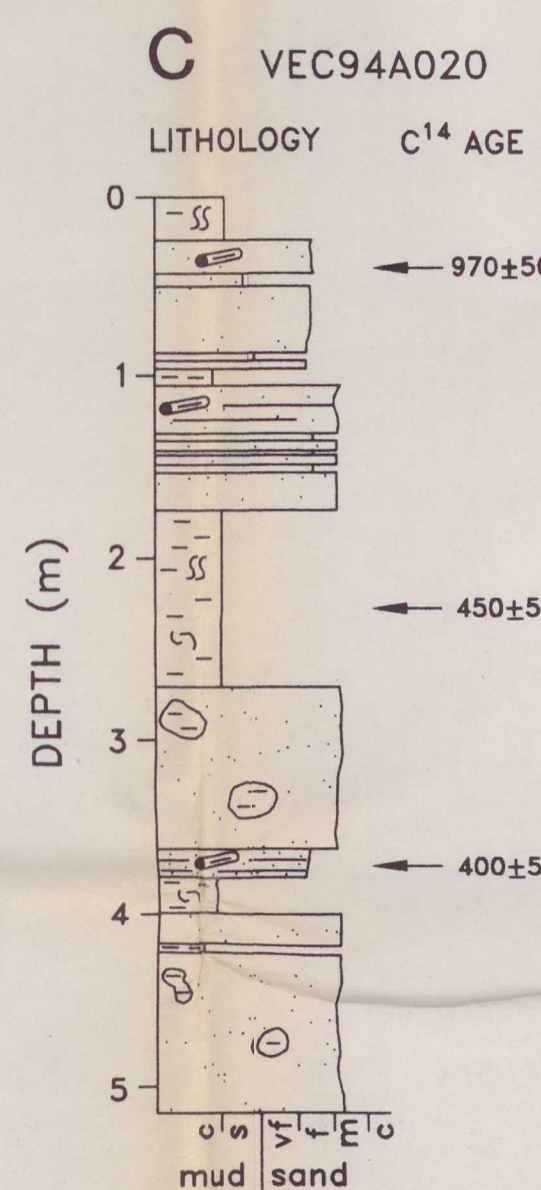
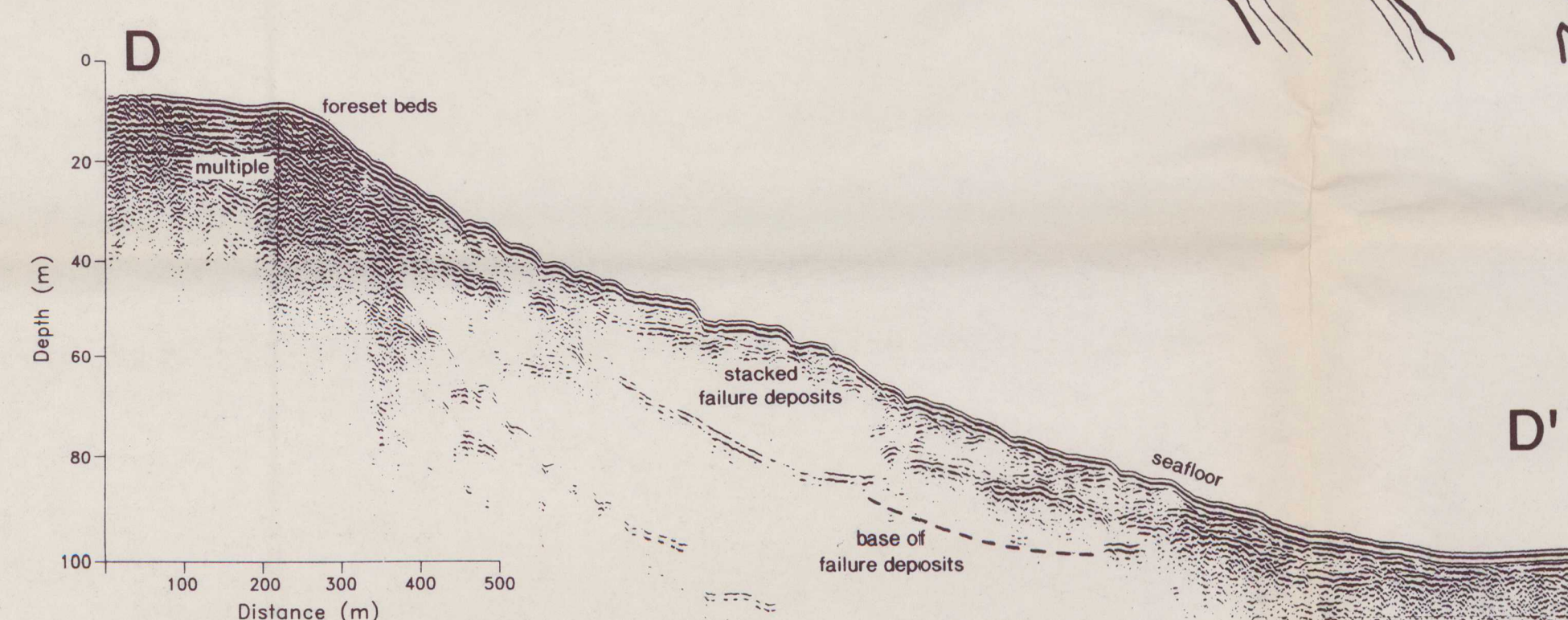
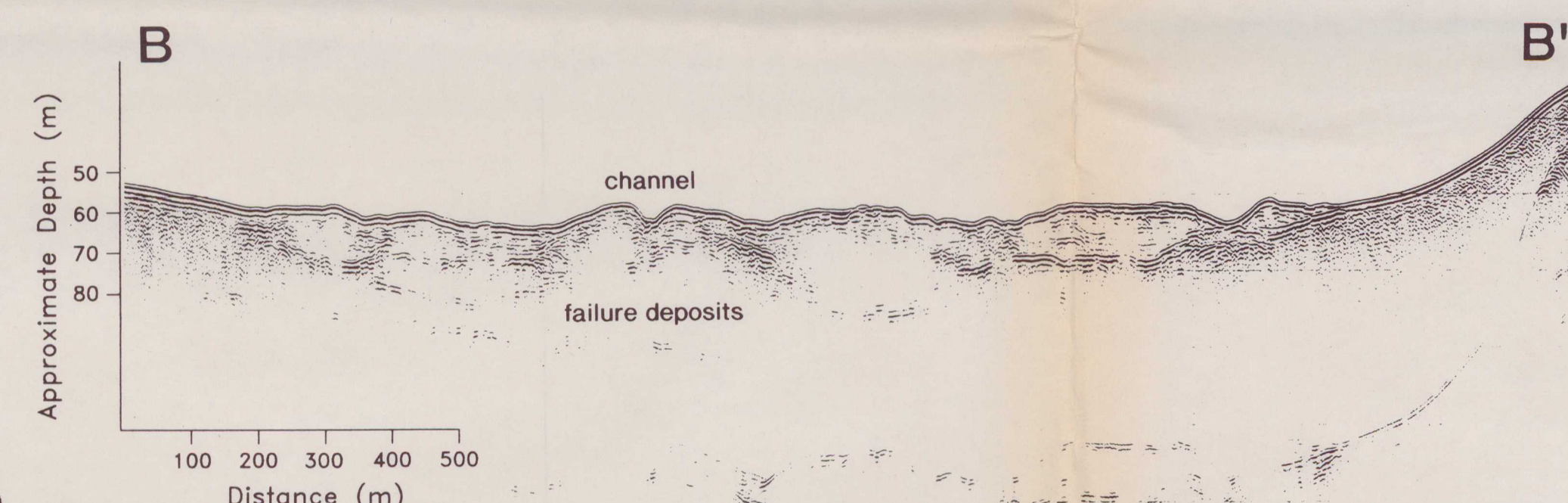
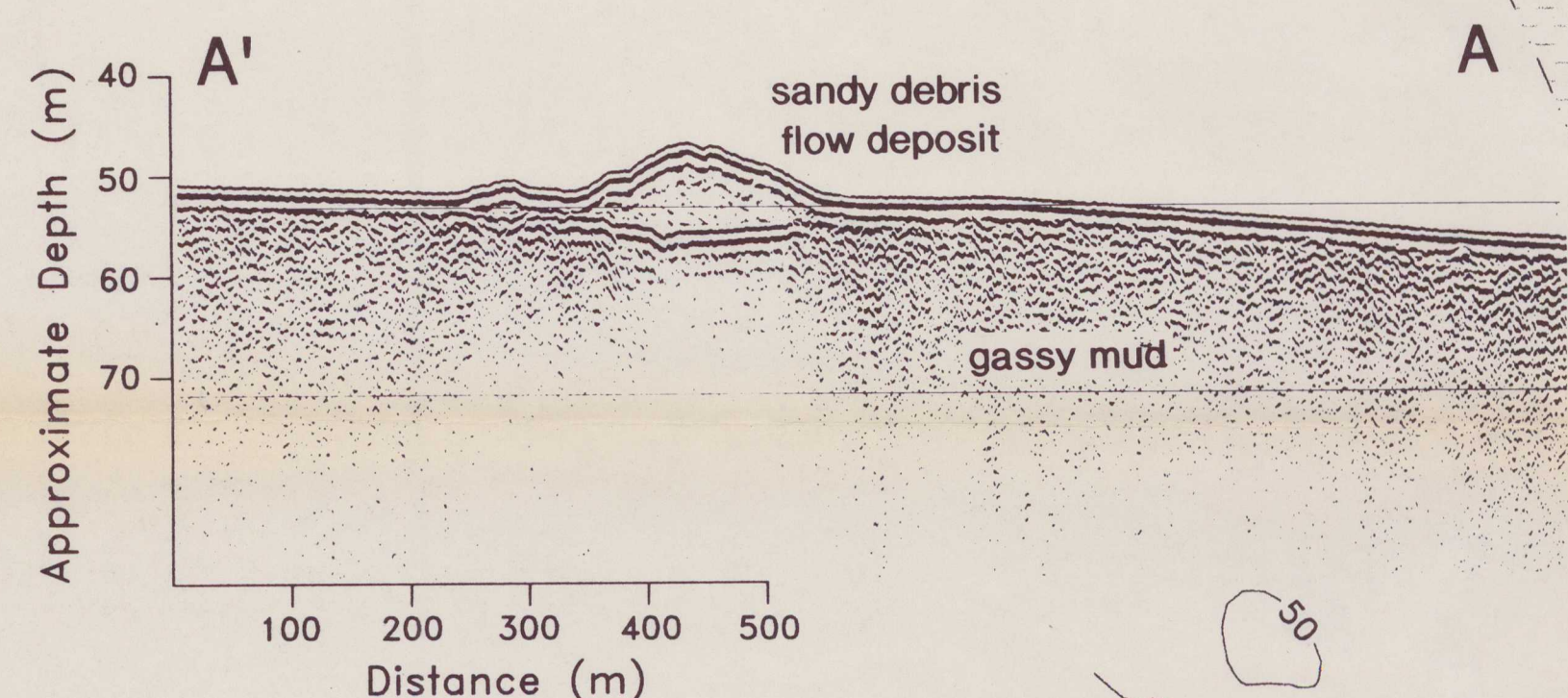
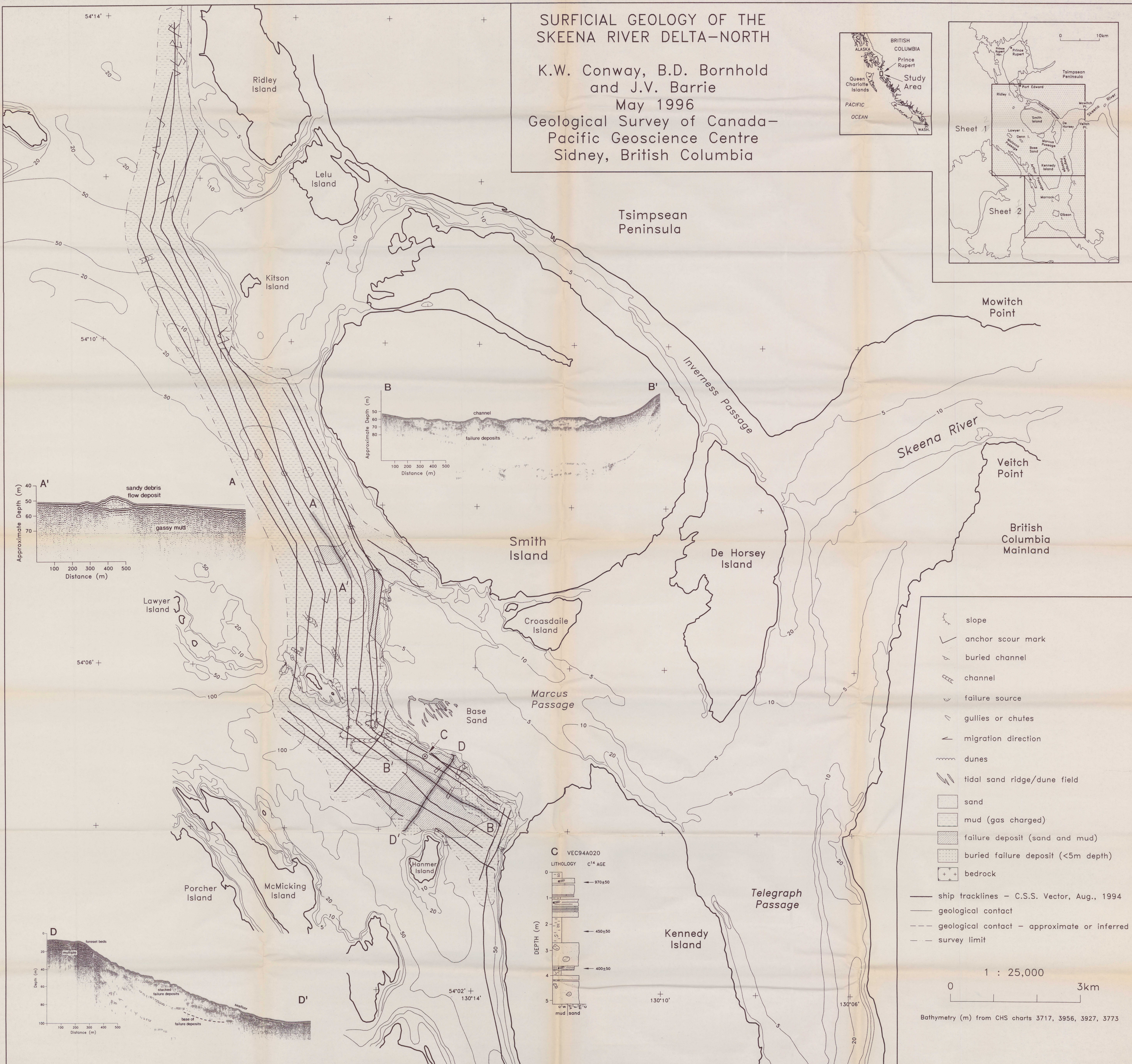
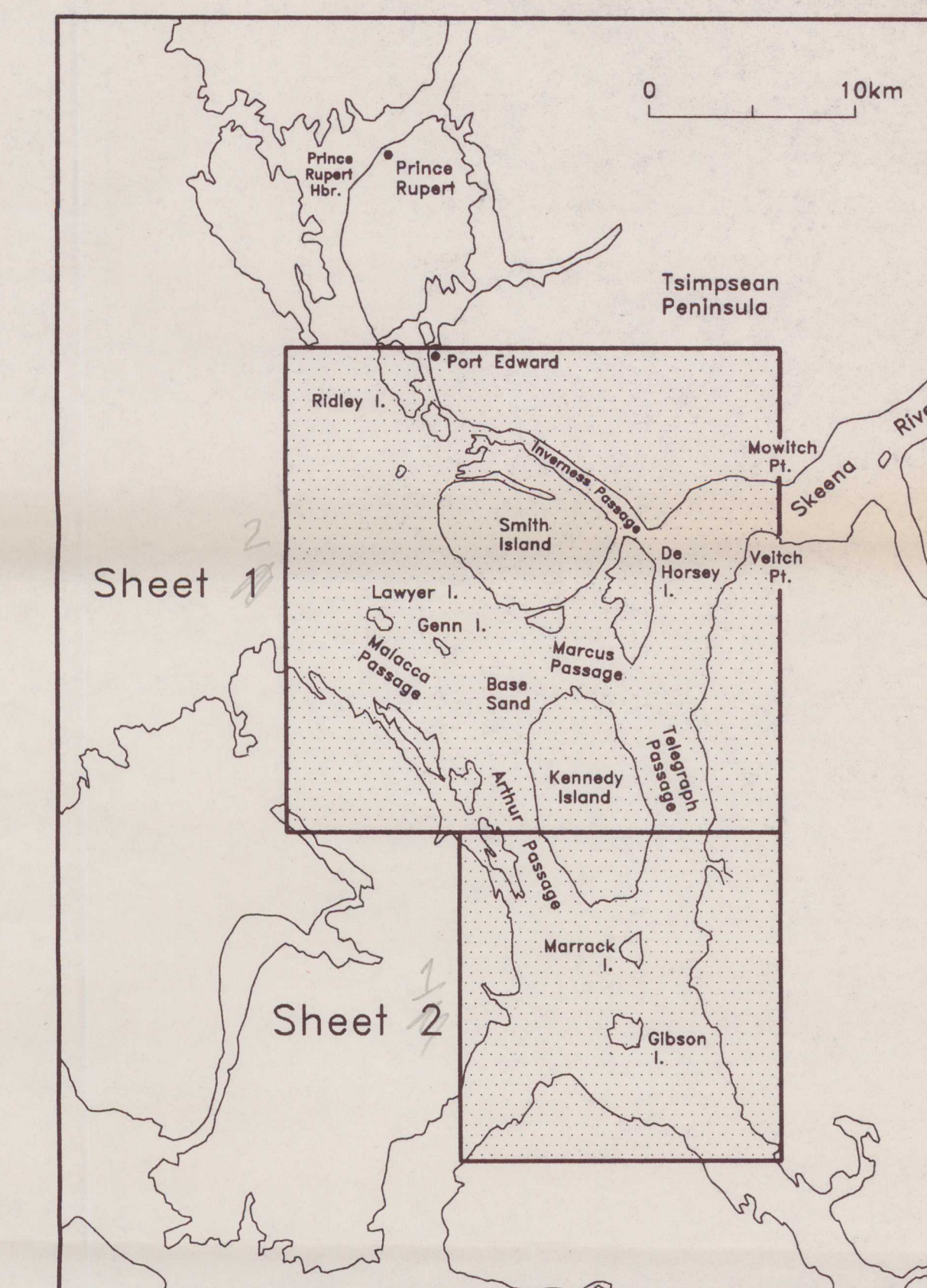
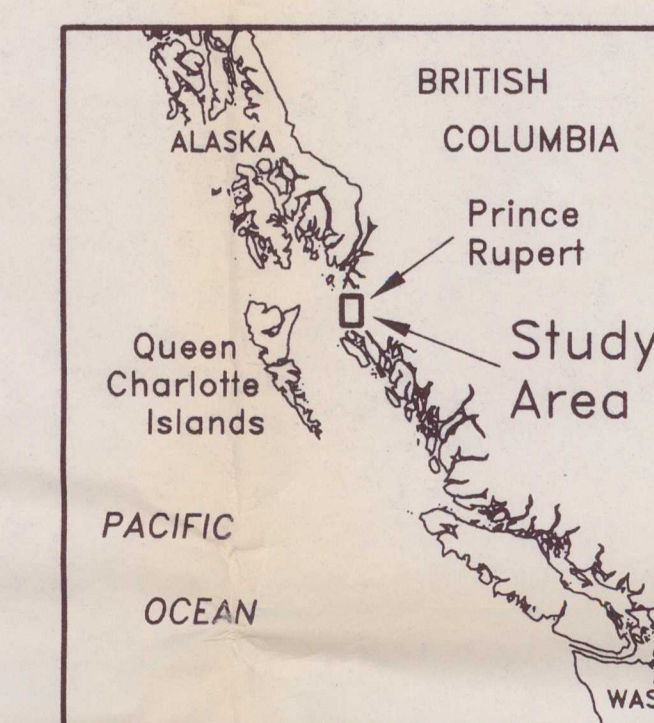


SURFICIAL GEOLOGY OF THE SKEENA RIVER DELTA-NORTH

K.W. Conway, B.D. Bornhold
and J.V. Barrie

May 1996

Geological Survey of Canada—
Pacific Geoscience Centre
Sidney, British Columbia



- slope
- anchor scour mark
- buried channel
- channel
- failure source
- gullies or chutes
- migration direction
- dunes
- tidal sand ridge/dune field
- sand
- mud (gas charged)
- failure deposit (sand and mud)
- buried failure deposit (<5m depth)
- bedrock
- ship tracklines — C.S.S. Vector, Aug., 1994
- geological contact
- geological contact — approximate or inferred
- survey limit

1 : 25,000

0 3km

Bathymetry (m) from CHS charts 3717, 3956, 3927, 3773