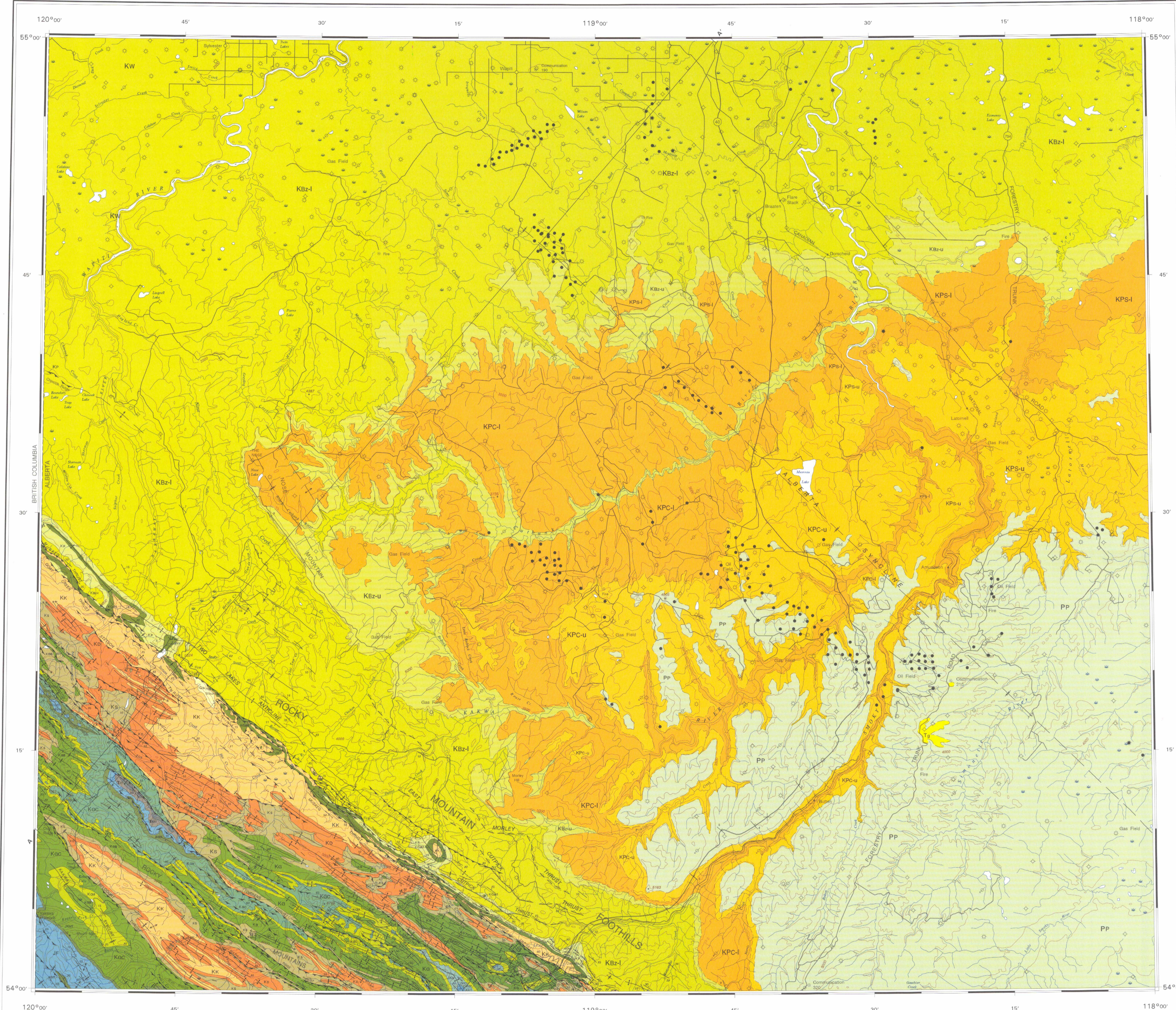
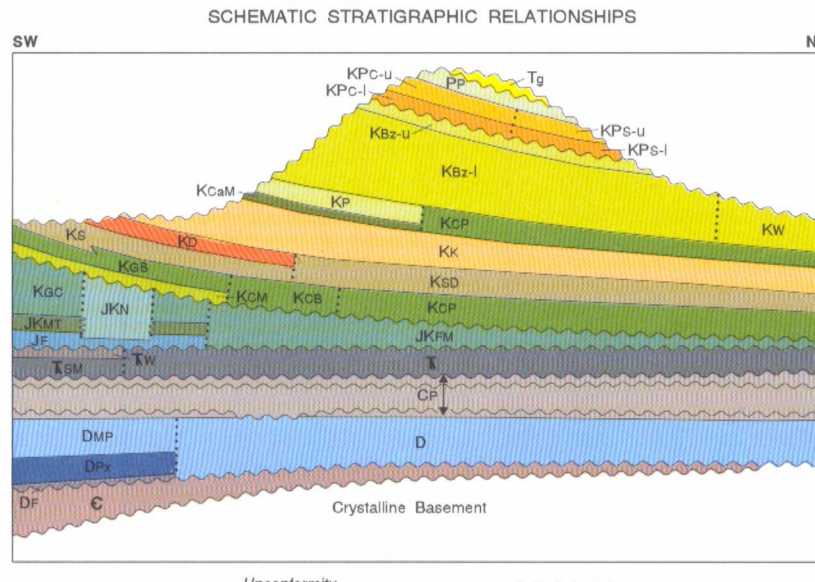


NOTE: This diagrammatic structure cross-section was originally drawn on profiles derived from and using geologic boundaries plotted on 1:50 000 scale topographic maps west of Dome Outcrop 7-7 well positions...



Map 1875A GEOLOGY WAPITI WEST OF SIXTH MERIDIAN ALBERTA. Includes scale, location map, and contact information.

LEGEND: QUATERNARY, TERTIARY, PALEOCENE, CRETACEOUS AND TERTIARY, CRETACEOUS, UPPER CRETACEOUS, MESSAZOIC, JURASSIC AND CRETACEOUS, JURASSIC, TRASSIC, PALEOZOIC, DEVONIAN, CARBONIFEROUS AND PERMIAN, UPPER DEVONIAN, MIDDLE AND UPPER DEVONIAN, PERMIAN, FLUME FORMATION, CAMBRIAN. Includes detailed descriptions of geological units and symbols for structural features.



SUBSURFACE: SMOKY GROUP (Kx - Kf) CARDIUM, MUSKIKI, MARSHYBANK AND PUSKAWASKU FORMATIONS, undivided; see column one for descriptions.

UPPER AND LOWER CRETACEOUS: SHAFTESSURY AND DUNVEGAN FORMATIONS, undivided; see column one for descriptions.

LOWER CRETACEOUS: GADOMIN, GETHING, MOOSEBAR, GATES, HULCRICE AND BOULDER CREEK FORMATIONS, undivided.

UPPER JURASSIC AND LOWER CRETACEOUS: FERNE FORMATION AND MINNES GROUP, undivided; see column one for descriptions.

TRASSIC: DIABER AND SCHOLER CREEK GROUPS; see column one for descriptions.

DEVONIAN, CARBONIFEROUS AND PERMIAN: ELK POINT, BEAVERHEAD LAKE, AND WOODING GROUPS AND WABAMUN FORMATION; see column one for descriptions.

PERMIAN: FLUME FORMATION; see column one for descriptions.

CAMBRIAN: Cambrian shale, undivided; see column one for descriptions.

