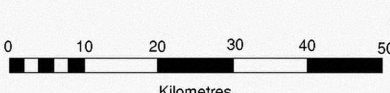


U



Glaciomarine/Glaciolacustrine Silty Clay

Uranium (ppm)  
-<0.002mm fraction  
N=195

MIN.	MAX.	#SAMP	%TILE
0.05	0.6	72	25
0.6	1.7	83	50
1.7	3.5	30	75
3.5	5.8	6	90
5.8	8.6	2	95
8.6	13.5	0	98
13.5	20	1	99
20	176	1	100

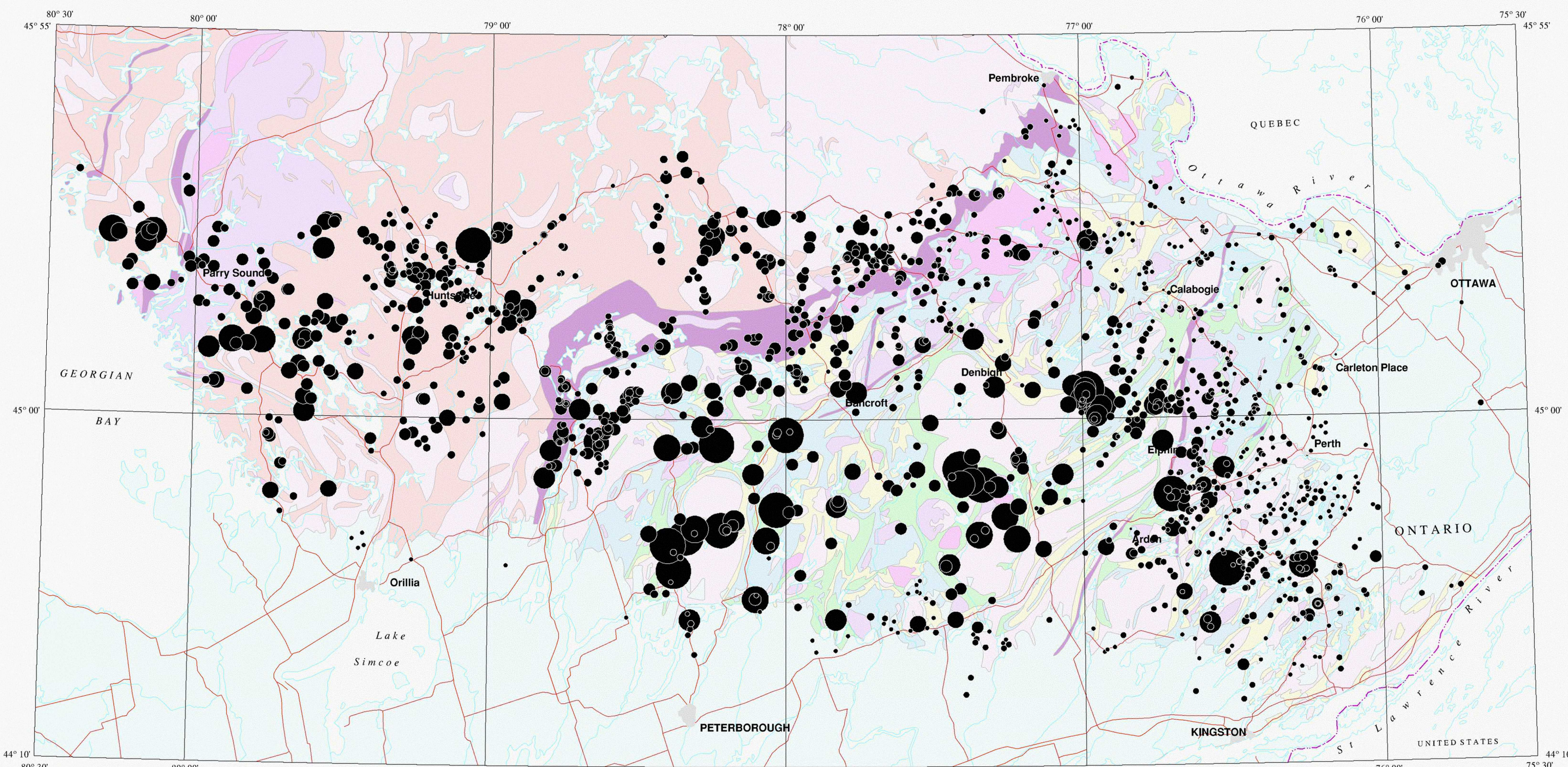
Glaciofluvial Sand and Gravel

Uranium (ppm)  
-<0.002mm fraction  
N=235

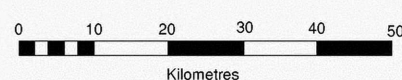
MIN.	MAX.	#SAMP	%TILE
0.05	0.6	40	25
0.6	1.7	38	50
1.7	3.5	72	75
3.5	5.8	50	90
5.8	8.6	22	95
8.6	13.5	7	98
13.5	20	4	99
20	176	2	100

LEGEND

- Paleozoic**
  - Limestone, dolostone and detrital sediment.
- Precambrian**
  - Tectonite.
  - Felsic intrusive.
  - Mafic to ultramafic intrusive.
- Marble.
- Alkalic intrusive.
- Clastic metasediment.
- Mafic to felsic metavolcanic.
- Gneiss.



U



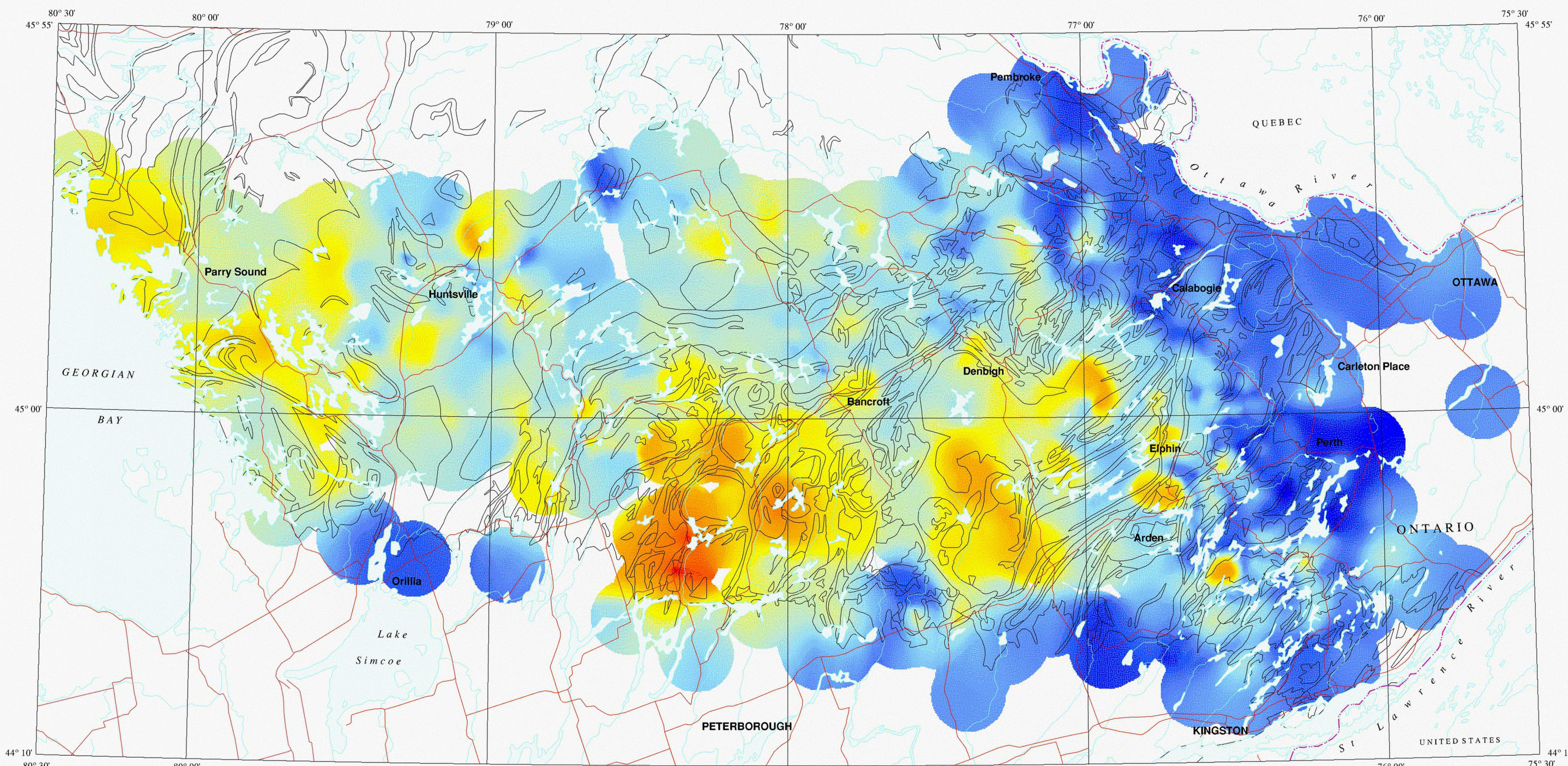
Till

Uranium (ppm)  
-<0.002mm fraction  
N=1392

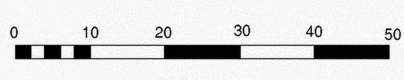
MIN.	MAX.	#SAMP	%TILE
0.05	0.6	316	25
0.6	1.7	342	50
1.7	3.5	353	75
3.5	5.8	200	90
5.8	8.6	72	95
8.6	13.5	41	98
13.5	20	14	99
20	176	14	100

LEGEND

- Paleozoic**
  - Limestone, dolostone and detrital sediment.
- Precambrian**
  - Tectonite.
  - Felsic intrusive.
  - Mafic to ultramafic intrusive.
- Marble.
- Alkalic intrusive.
- Clastic metasediment.
- Mafic to felsic metavolcanic.
- Gneiss.



U



Till

Uranium (ppm)  
-<0.002mm fraction  
N=1392 Cell Size >500m



Interpretation Technique: Inverse Distance Weighted  
Cell Size: 250 metres  
Display Radius: 10 000 m  
Search Radius: 100 000m  
Data point limit: 15  
Analytical Technique: Fluorimetry