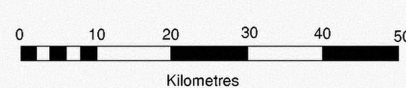


Cr

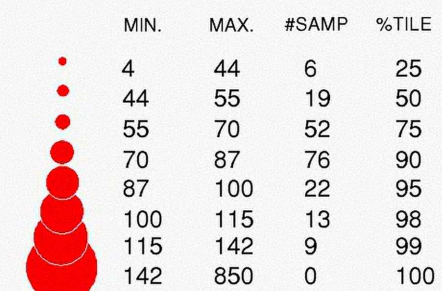


Glaciomarine/Glaciolacustrine Silty Clay

Chromium (ppm)

<0.002mm fraction

N=197

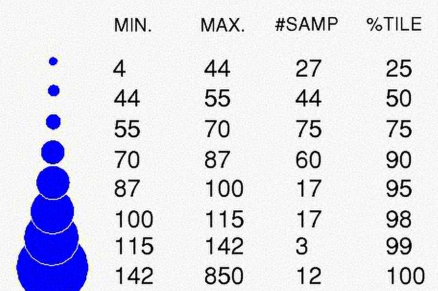


Glaciofluvial Sand and Gravel

Chromium (ppm)

<0.002mm fraction

N=255



LEGEND

Paleozoic

Limestone, dolostone and detrital sediment.

Precambrian

Tectonite.

Felsic intrusive.

Mafic to ultramafic intrusive.

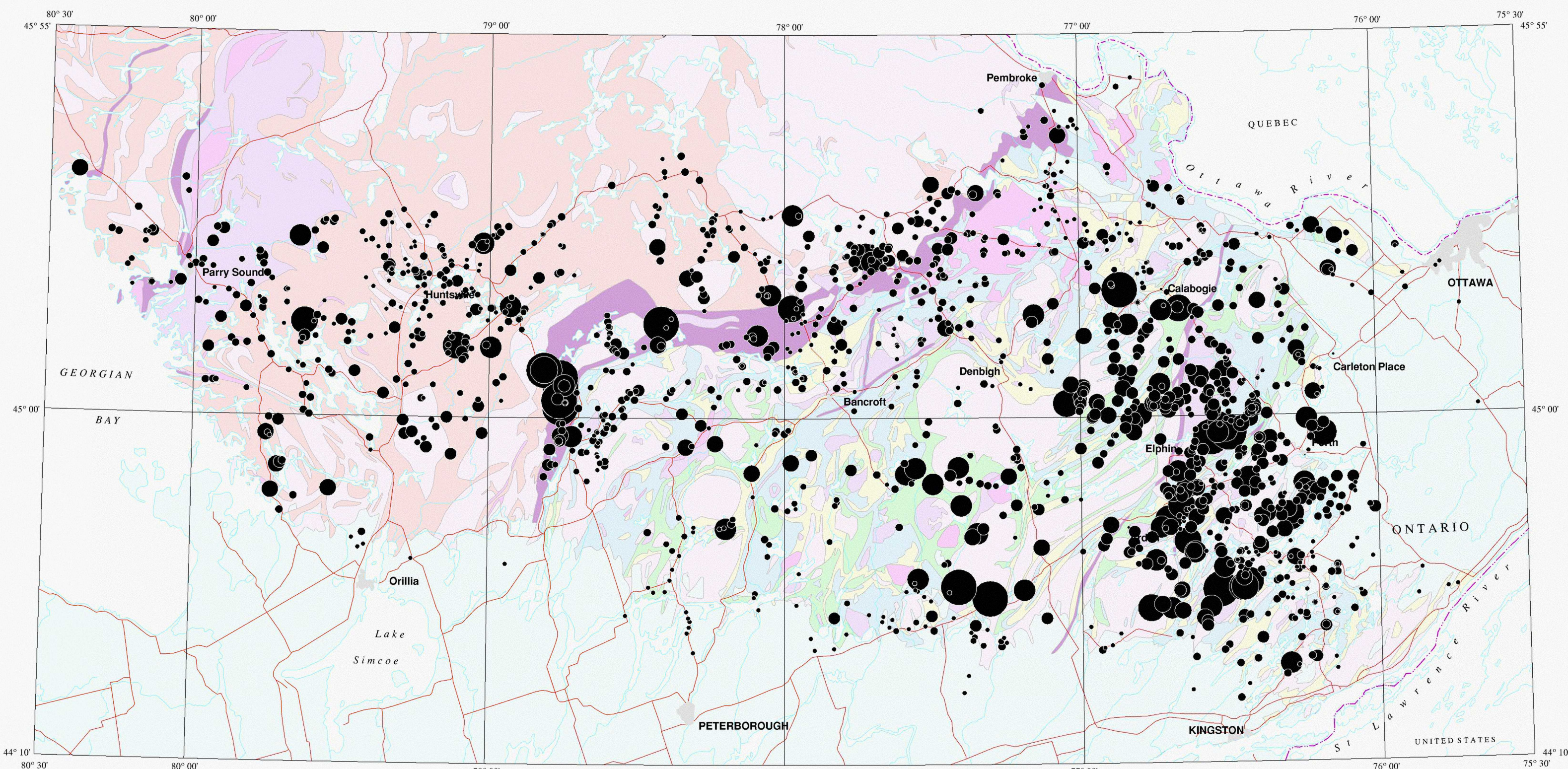
Marble.

Alkalic intrusive.

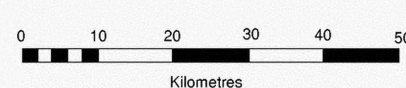
Clastic metasediment.

Mafic to felsic metavolcanic.

Gneiss.



Cr

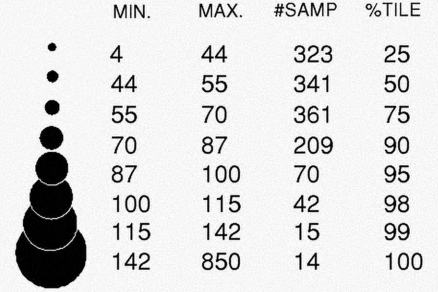


Till

Chromium (ppm)

<0.002mm fraction

N=1374



LEGEND

Paleozoic

Limestone, dolostone and detrital sediment.

Precambrian

Tectonite.

Felsic intrusive.

Mafic to ultramafic intrusive.

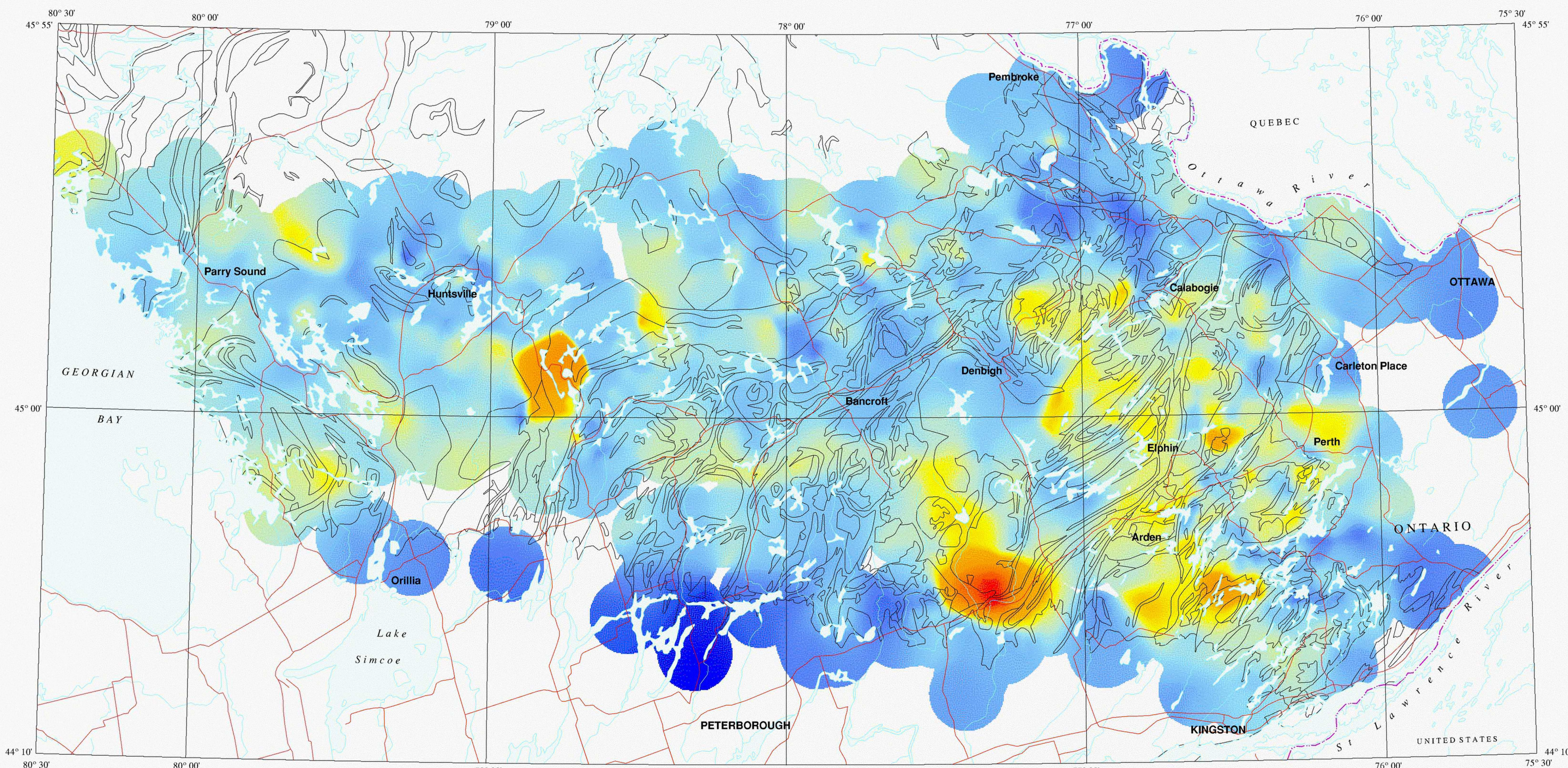
Marble.

Alkalic intrusive.

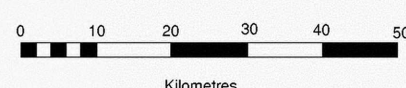
Clastic metasediment.

Mafic to felsic metavolcanic.

Gneiss.



Cr



Till

Chromium (ppm)

<0.002mm fraction

N=1374 Cell Size >500m



Interpretation Technique: Inverse Distance Weighted
 Cell Size: 250 metres
 Display Radius: 10 000 m
 Search Radius: 100 000m
 Data point limit: 15

Analytical Technique: Atomic Absorption