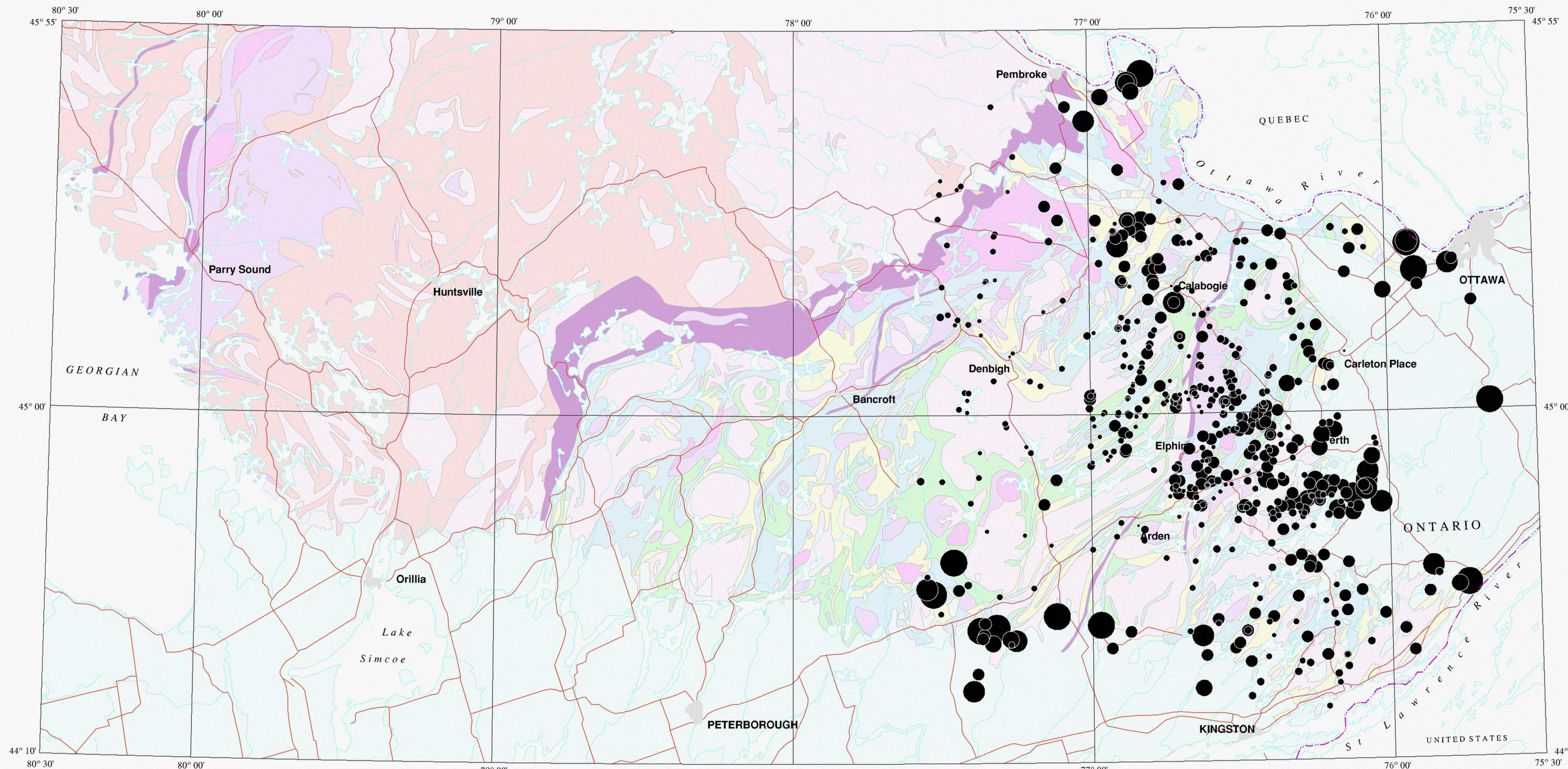
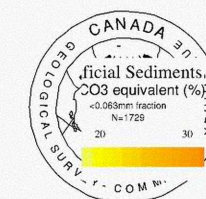
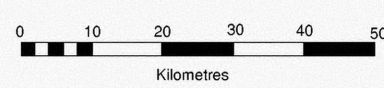


# LITHOLOGY OF SURFICIAL SEDIMENTS SOUTHEASTERN ONTARIO

I.M.Kettles and  
W.W. Shilts



## Paleozoic Carbonate Clasts

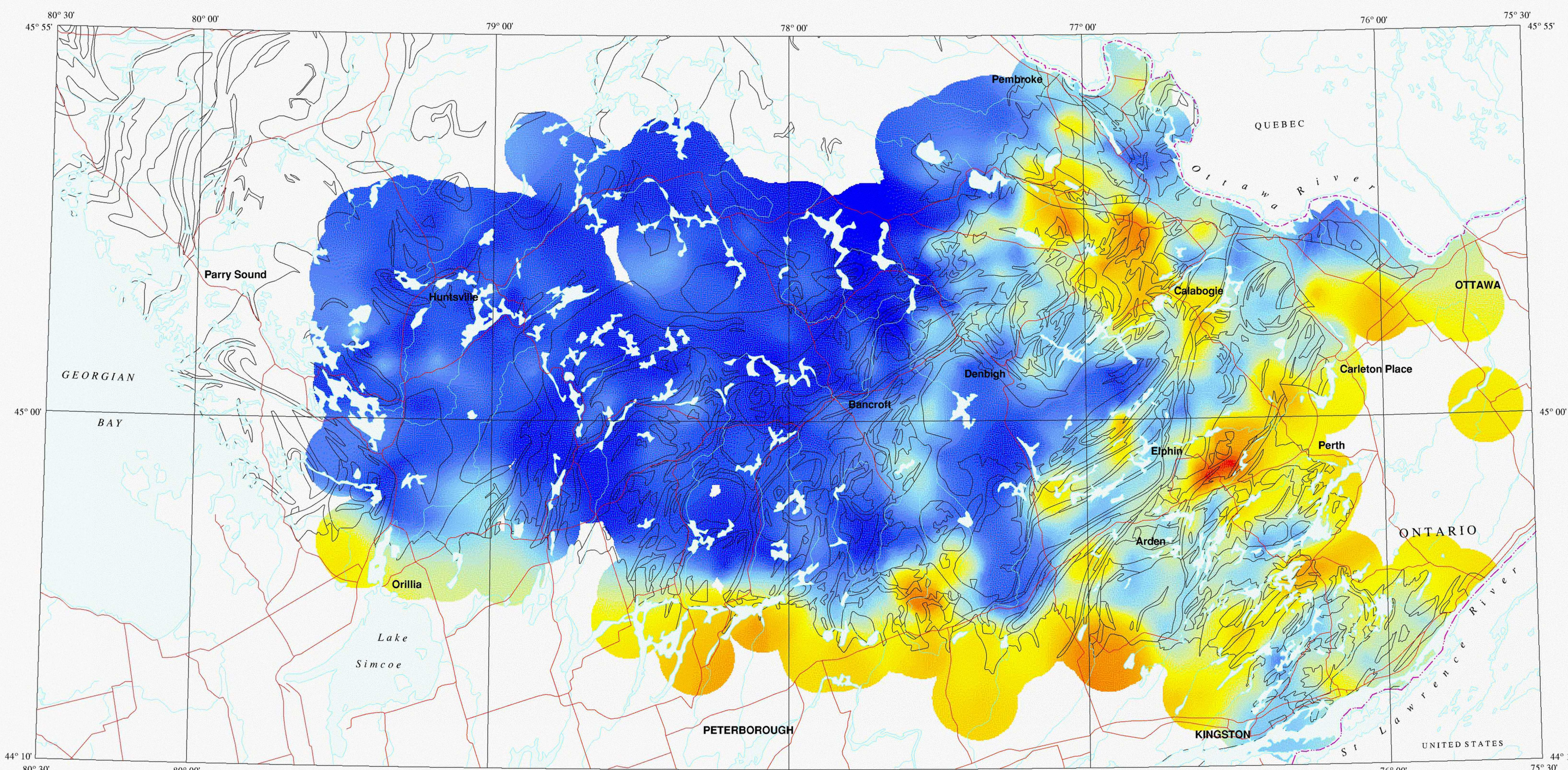


Surficial Sediments  
Paleozoic Carbonate Clasts (wt. %)

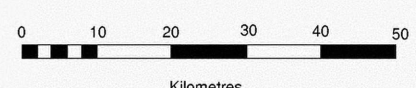
	MIN.	MAX.	#SAMP	%TILE
●	0	0.01	63	15
●	0.01	10	160	45
●	10	35	124	65
●	35	72	164	90
●	72	82.7	27	95
●	82.7	91.1	17	98
●	91.1	99.2	11	100

### LEGEND

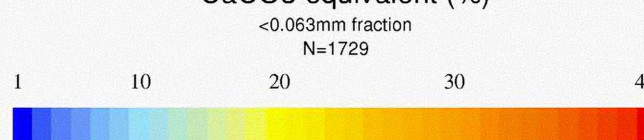
- Paleozoic
  - Limestone, dolostone and detrital sediment.
  - Marble.
- Precambrian
  - Tectonite.
  - Alkalic intrusive.
  - Felsic intrusive.
  - Clastic metasediment.
  - Mafic to felsic metavolcanic.
  - Mafic to ultramafic intrusive.
  - Gneiss.



## CaCO<sub>3</sub>

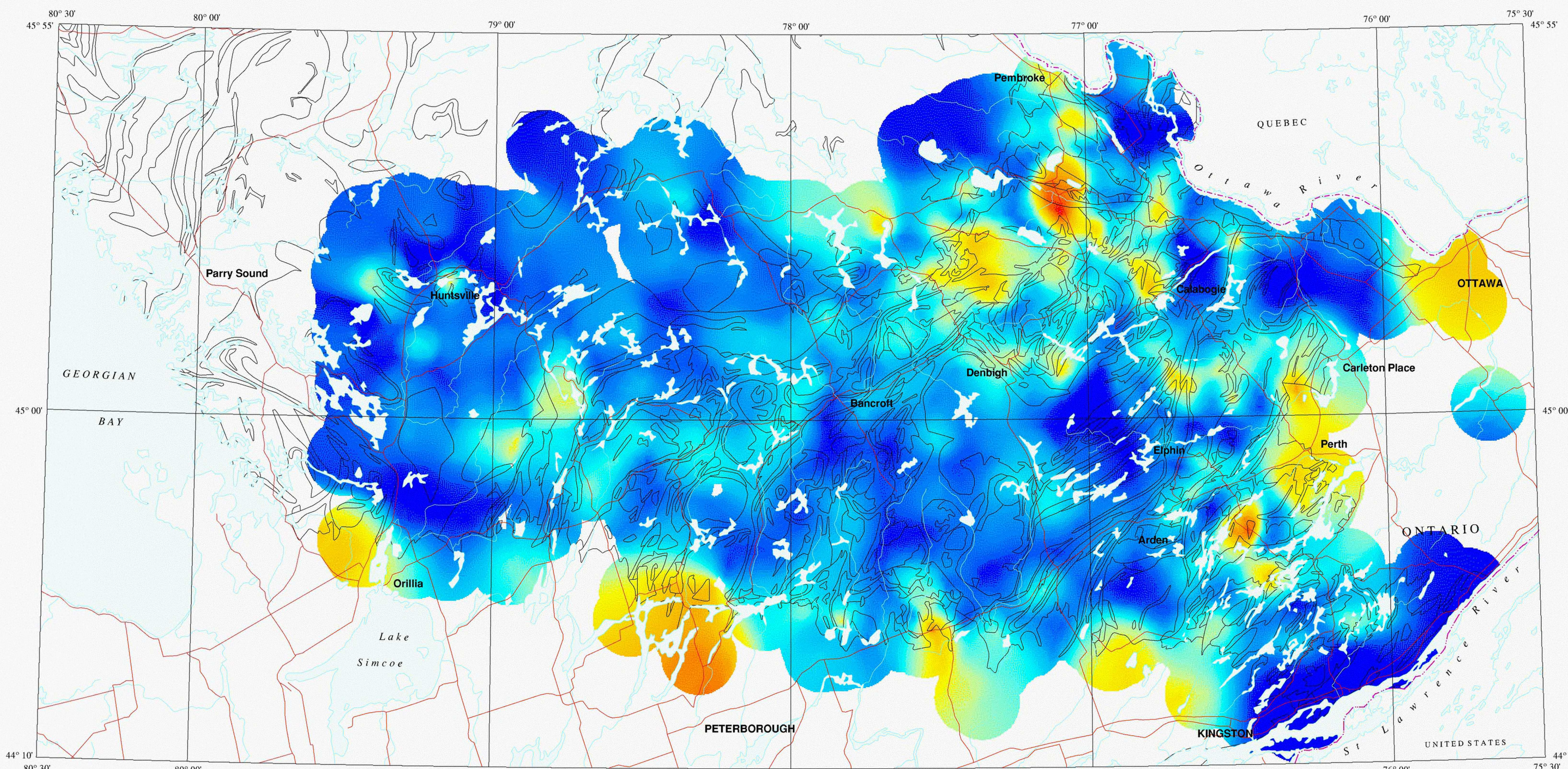


Surficial Sediments  
CaCO<sub>3</sub> equivalent (%)

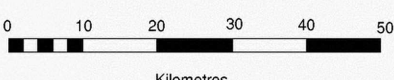


Interpretation Technique: Inverse Distance Weighted  
Cell Size: 250 metres  
Display Radius: 10 000 m  
Search Radius: 100 000m  
Data point limit: 20

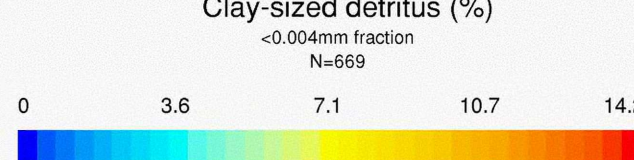
Analytical Technique: LECO Carbon Analysis Method



## Clay



Clay in Till  
Clay-sized detritus (%)



Interpretation Technique: Inverse Distance Weighted  
Cell Size: 250 metres  
Display Radius: 10 000 m  
Search Radius: 100 000m  
Data point limit: 20

Analytical Technique: Dry Sieving and Pipette Method