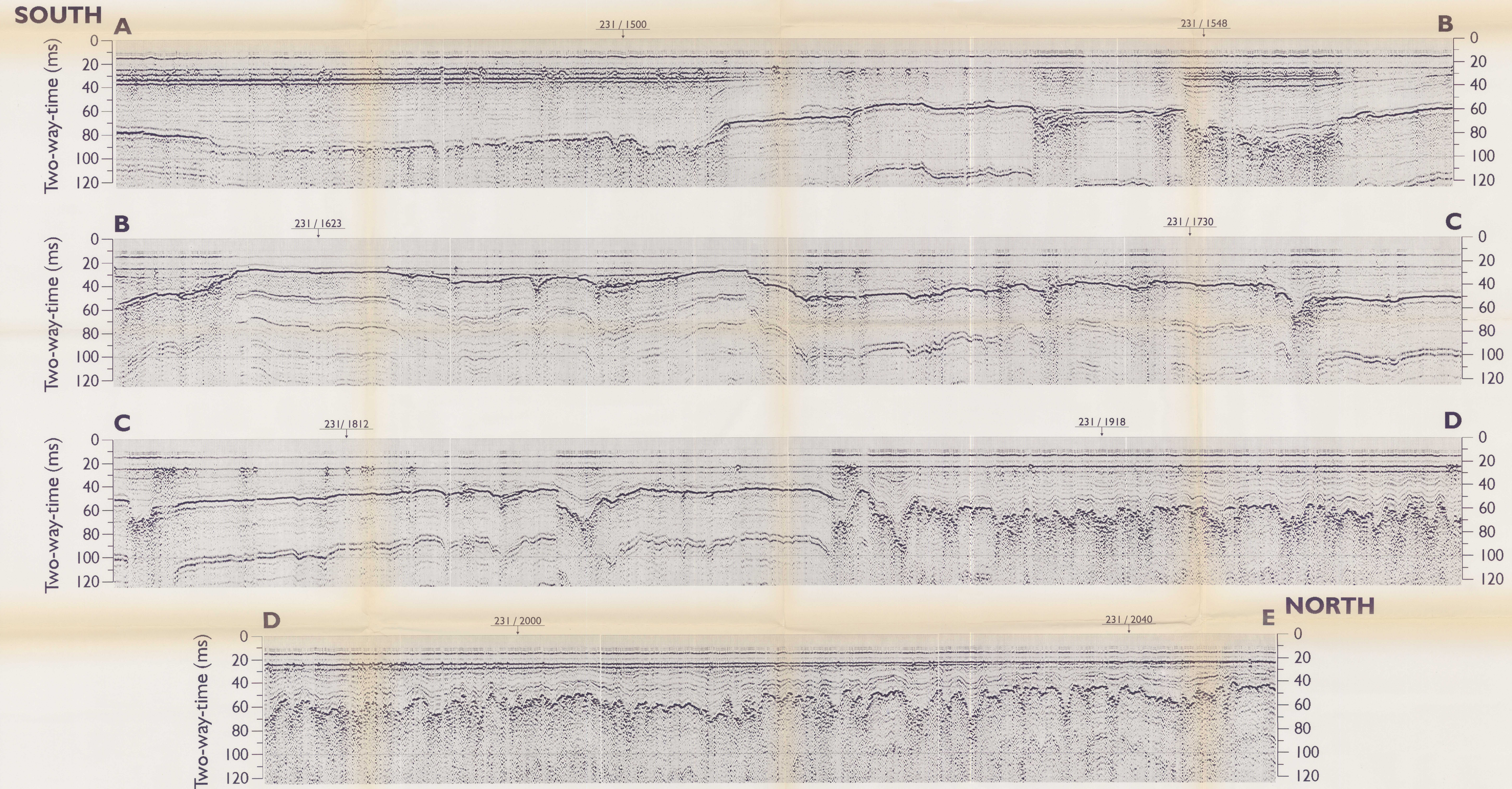
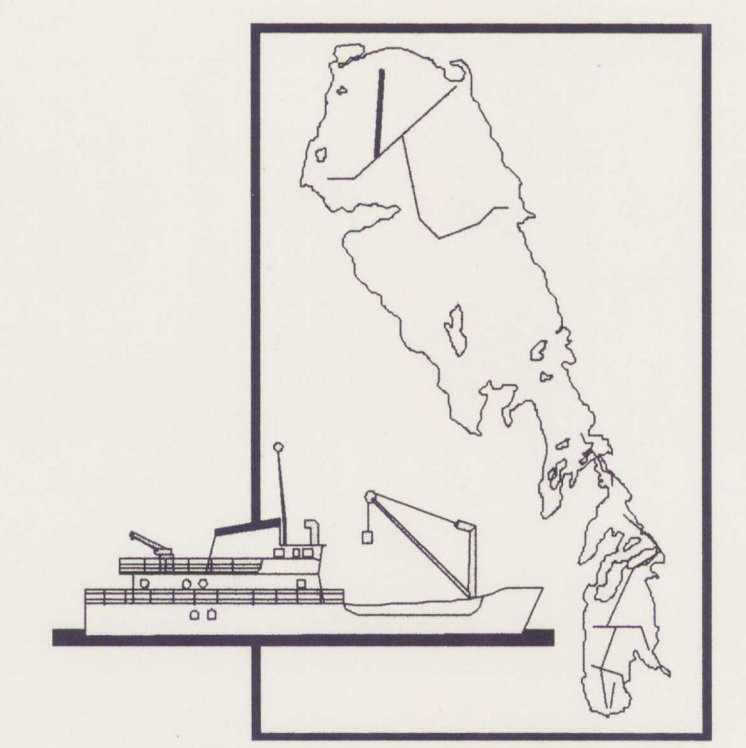


# LAKE WINNIPEG PROJECT SEISMIC PROFILES

## NORTH BASIN LINE 11



V.E. (@1500 m/s) = 11.6X



Copies of this map may be obtained from the Geological Survey of Canada, 601 Booth Street, Ottawa, Ontario K1A 0E8

This map has been reprinted from a licensed version of the original map. Reproduction par numérisation d'une carte sur papier.