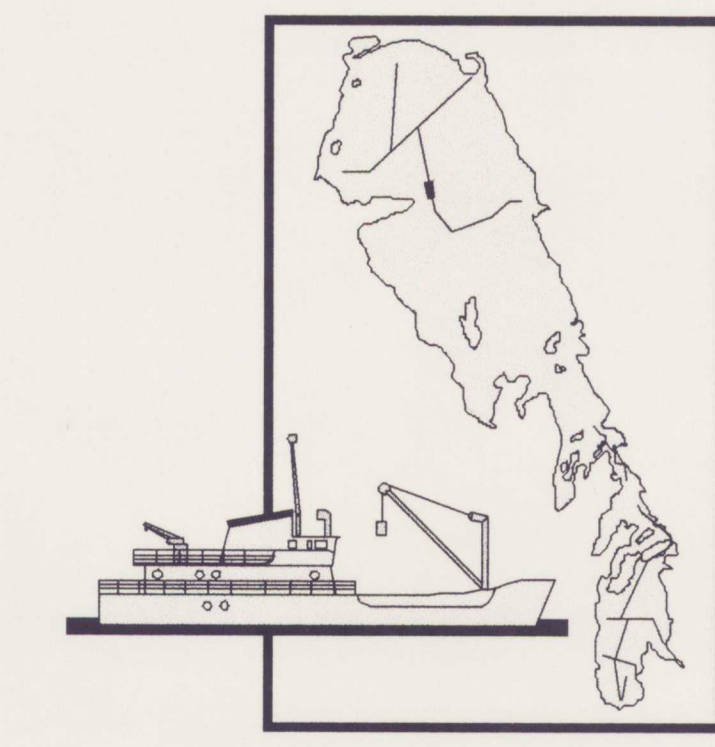
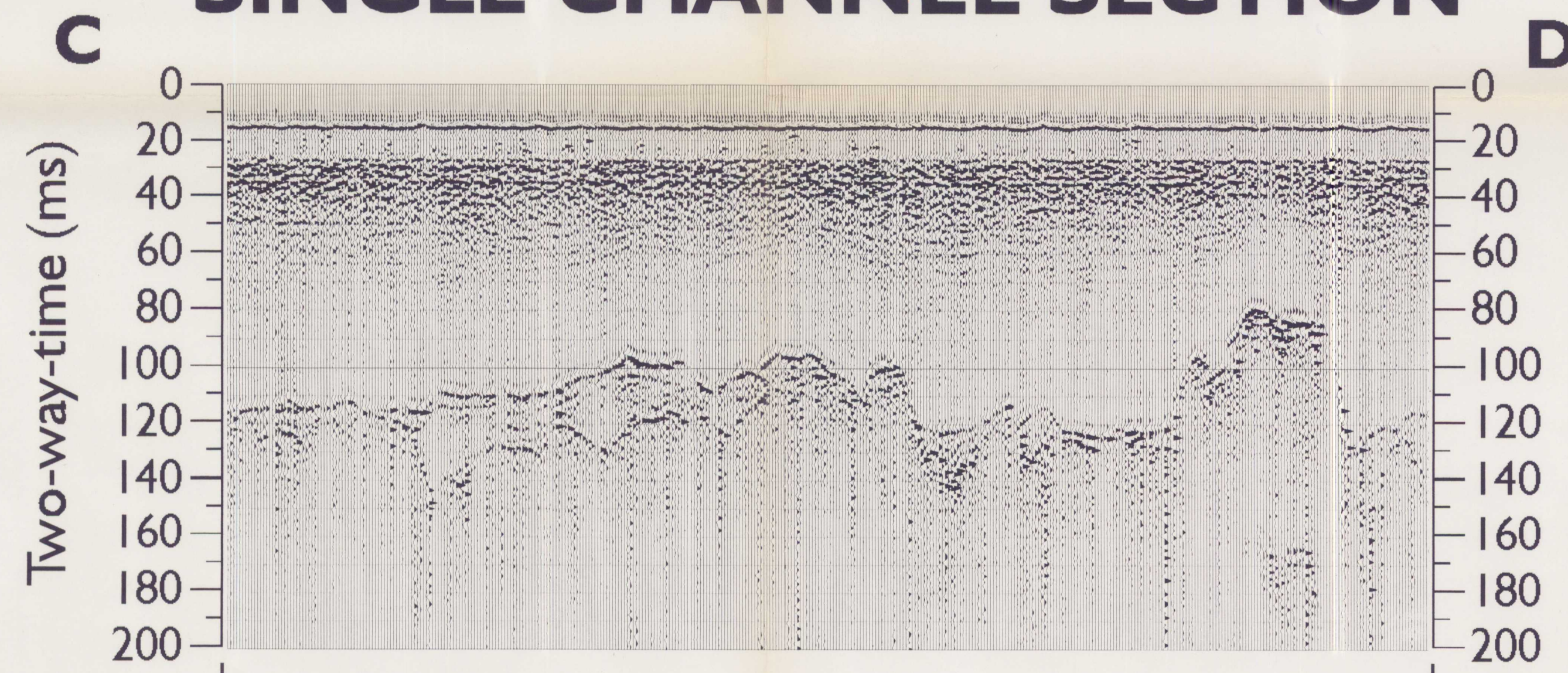


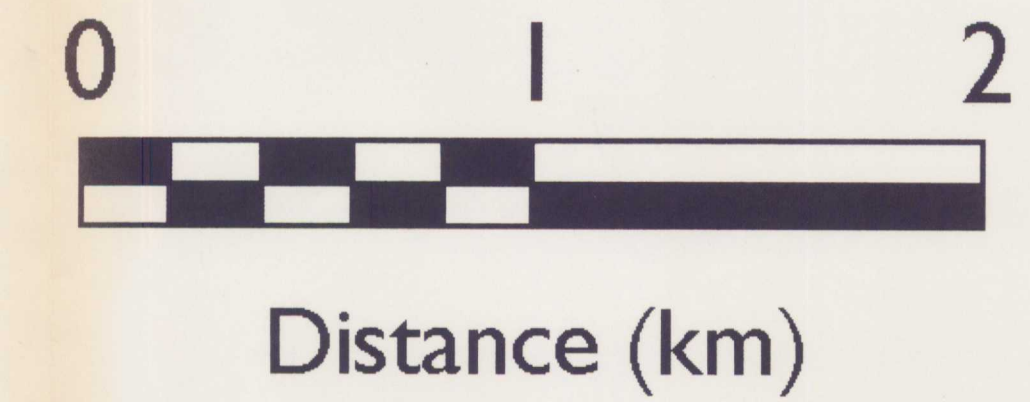
# LAKE WINNIPEG PROJECT LINE NB10: MULTICHANNEL SEISMIC PROCESSING



## SINGLE CHANNEL SECTION



Single Channel V.E. (@1500 m/s) = 14.2X



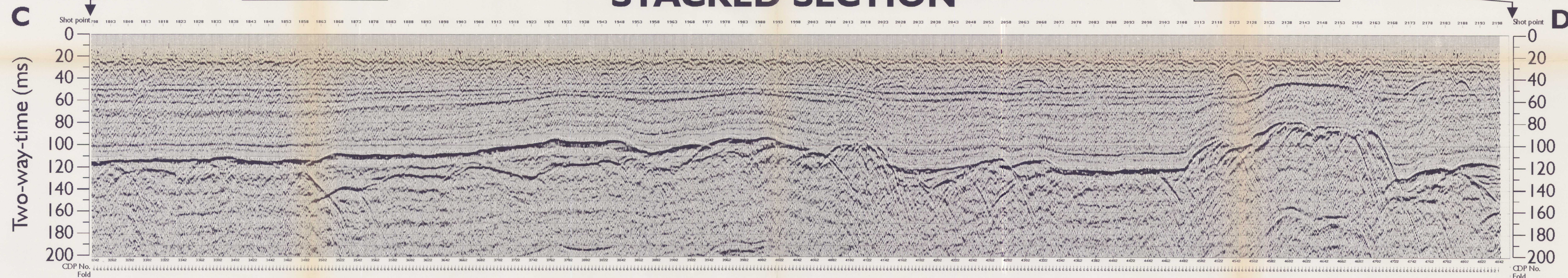
SOUTH

230 / 1858

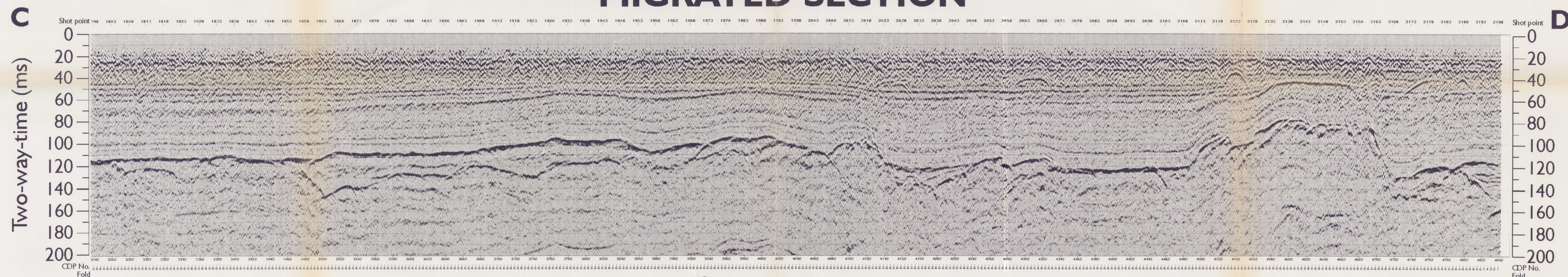
## STACKED SECTION

230 / 1927

NORTH



## MIGRATED SECTION



Multichannel V.E. (@1500 m/s) = 4.7X

