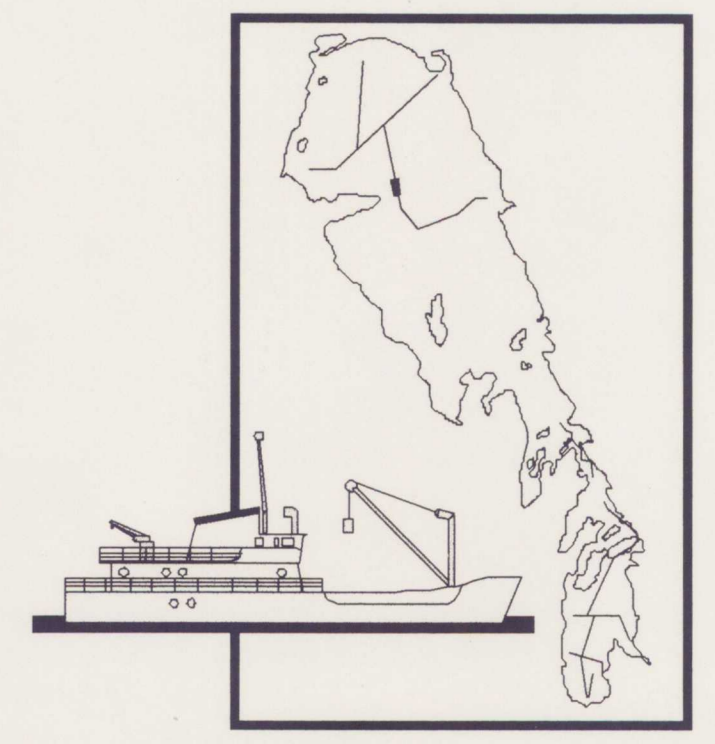
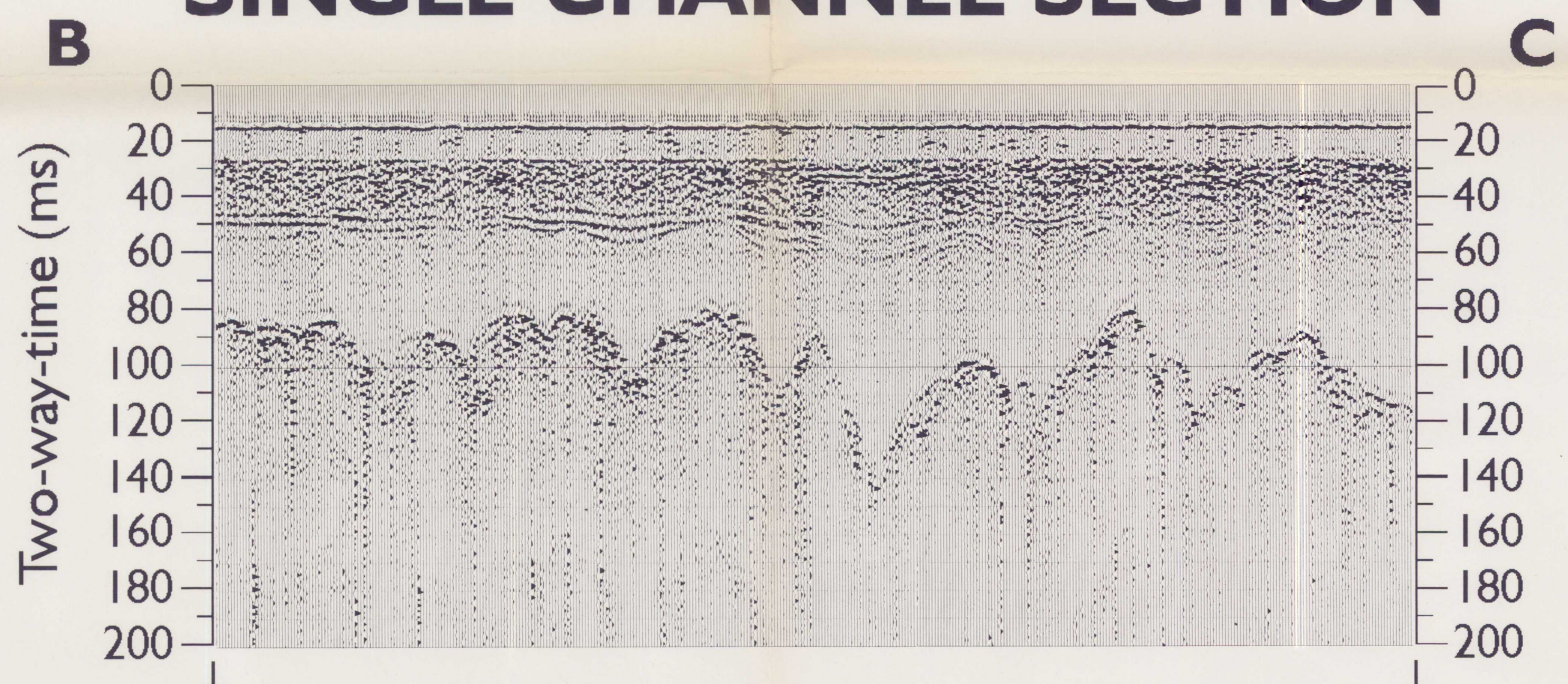


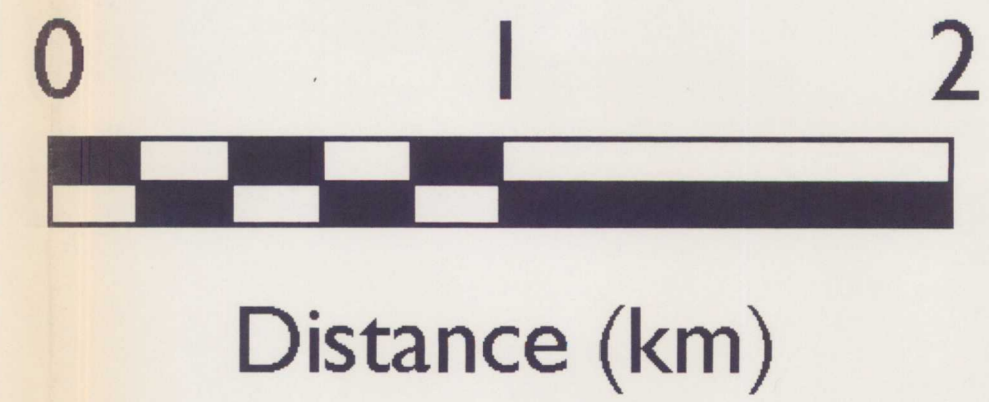
# LAKE WINNIPEG PROJECT LINE NB 10: MULTICHANNEL SEISMIC PROCESSING



## SINGLE CHANNEL SECTION



Single Channel V.E. (@ 1500 m/s) = 14.2X



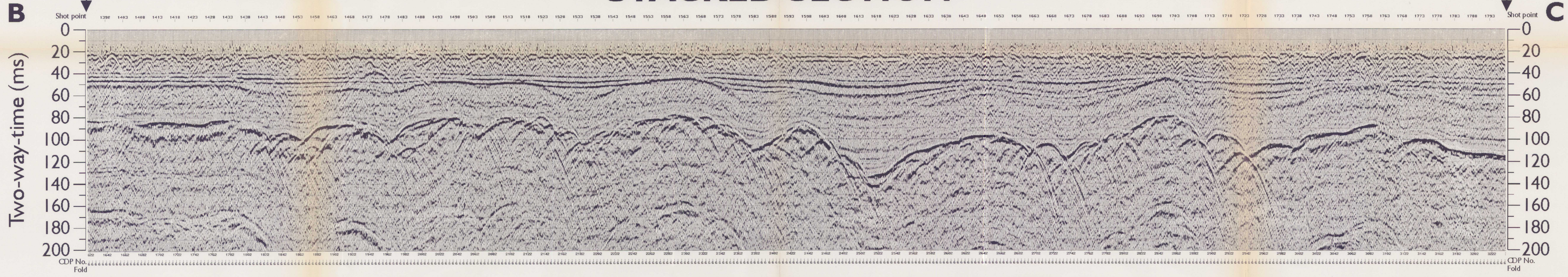
SOUTH

230 / 1821

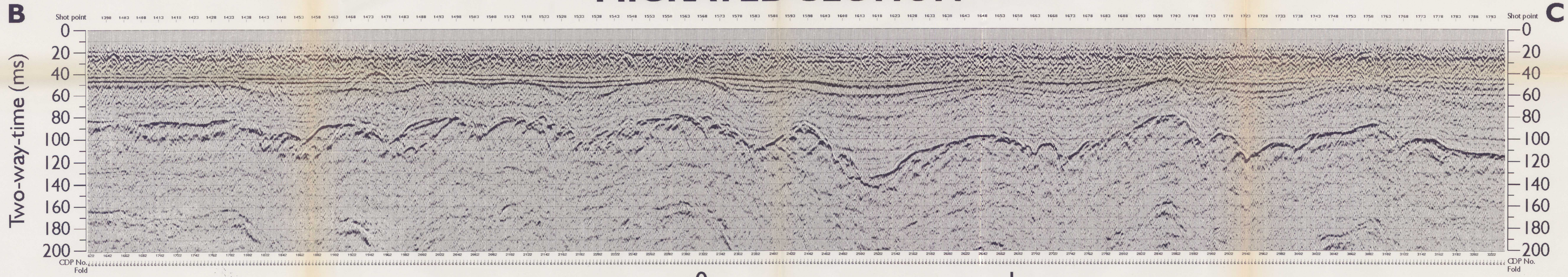
## STACKED SECTION

230 / 1858

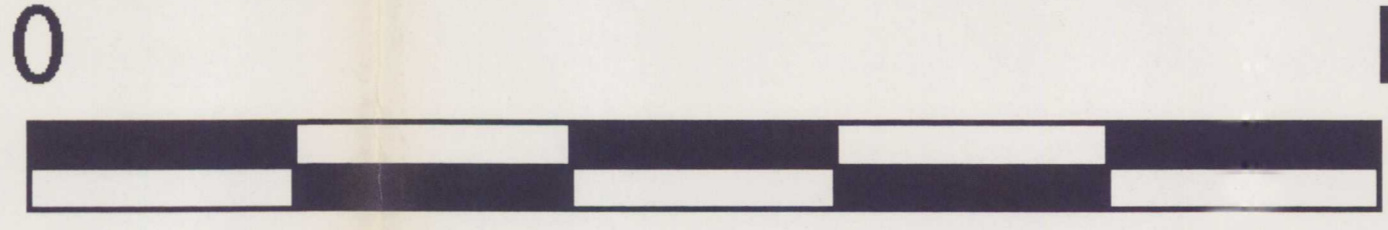
NORTH



## MIGRATED SECTION



Multichannel V.E. (@ 1500 m/s) = 4.7X



Distance (km)