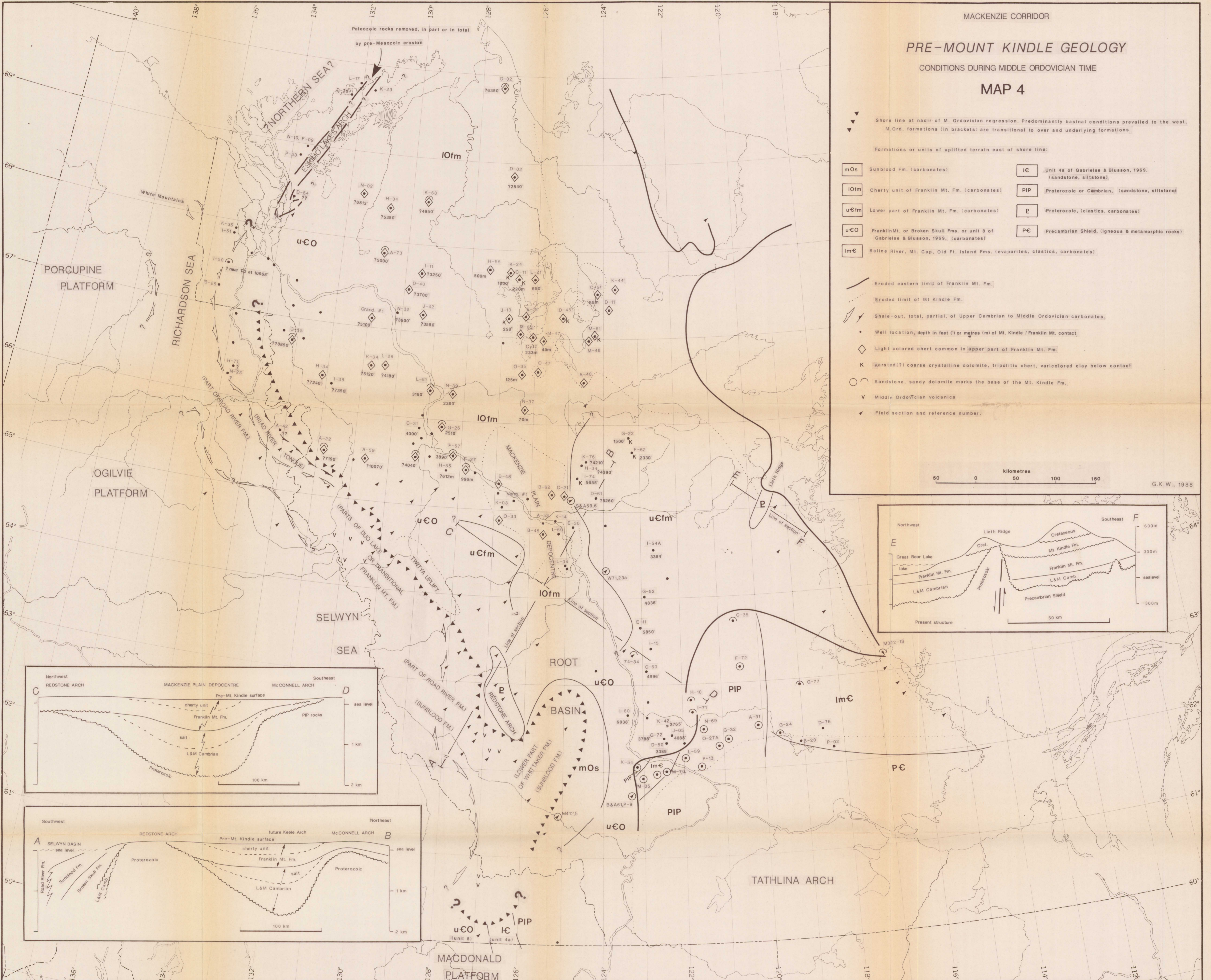
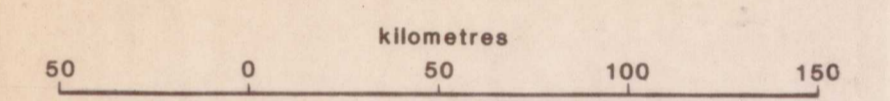


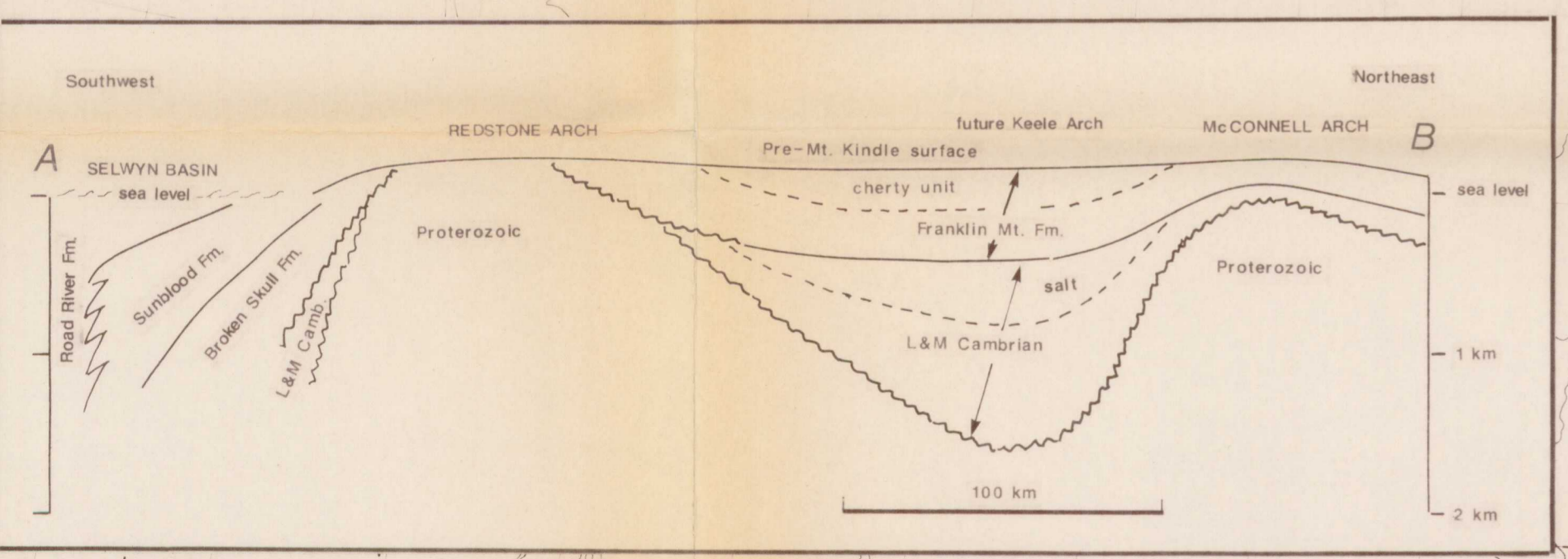
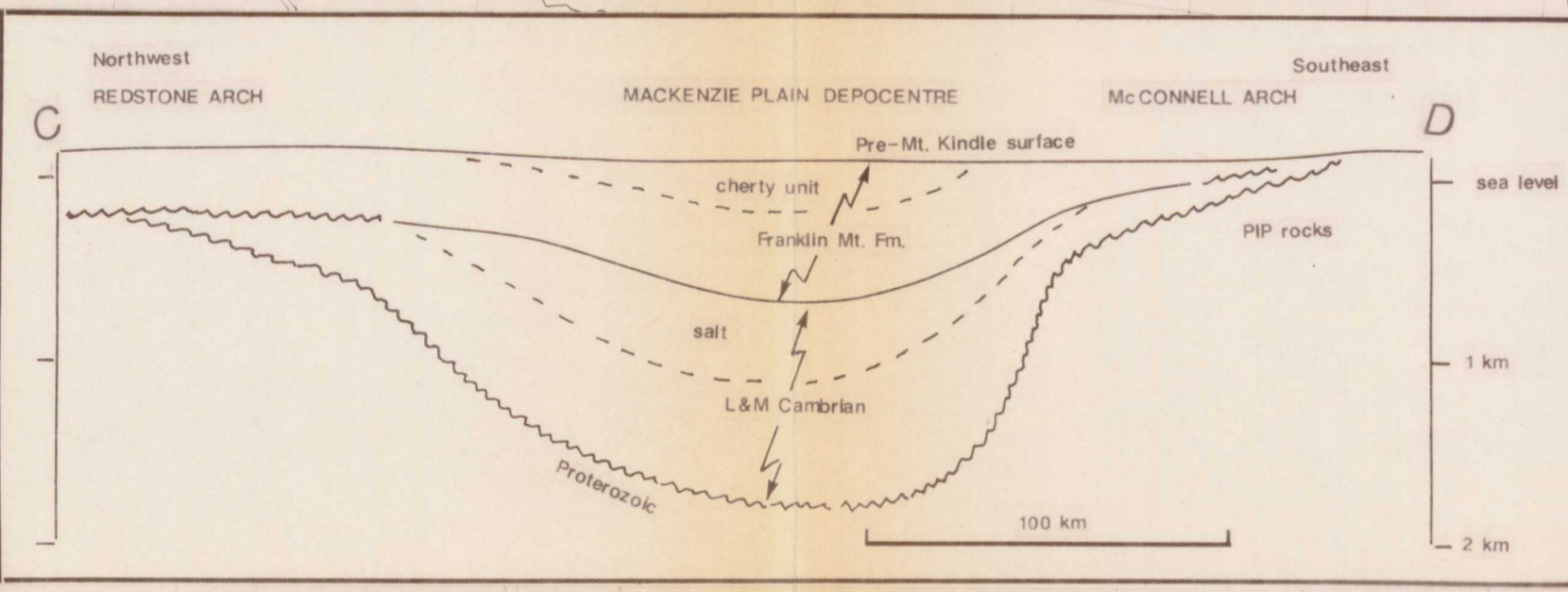
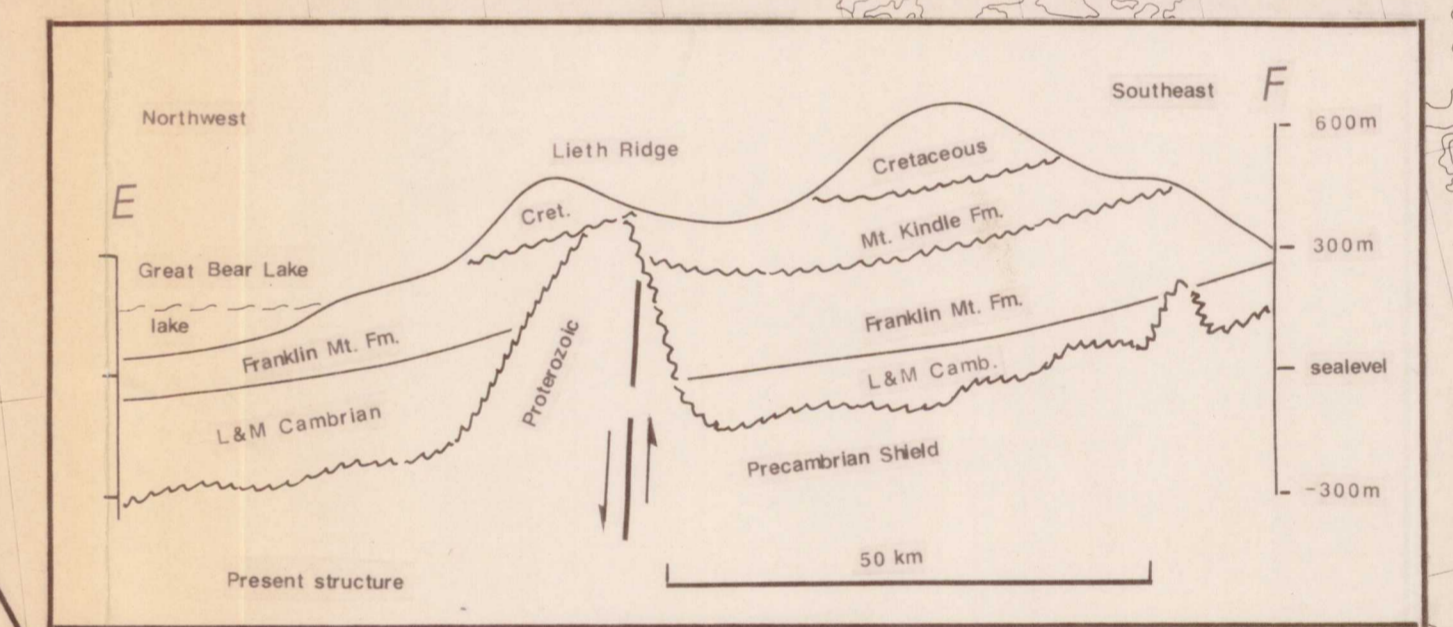
MACKENZIE CORRIDOR  
**PRE-MOUNT KINDLE GEOLOGY**  
 CONDITIONS DURING MIDDLE ORDOVICIAN TIME  
**MAP 4**



- Shore line at nadir of M. Ordovician regression. Predominantly basinal conditions prevailed to the west. M. Ord. formations (in brackets) are transitional to over and underlying formations.
- Formations or units of uplifted terrain east of shore line:
- |   |  |
|---|--|
| <b>mOs</b> Sunblood Fm. (carbonates)  | <b>IC</b> Unit 4a of Gabrielse & Blusson, 1969. (sandstone, siltstone) |
| <b>IOfm</b> Cherty unit of Franklin Mt. Fm. (carbonates)  | <b>PIP</b> Proterozoic or Cambrian. (sandstone, siltstone)             |
| <b>uCfm</b> Lower part of Franklin Mt. Fm. (carbonates)   | <b>P</b> Proterozoic. (clastics, carbonates)                           |
| <b>uCO</b> Franklin Mt. or Broken Skull Fms. or unit 8 of Gabrielse & Blusson, 1969. (carbonates) | <b>PC</b> Precambrian Shield. (igneous & metamorphic rocks)            |
| <b>ImC</b> Saline River, Mt. Cap, Old Ft. Island Fms. (evaporites, clastics, carbonates)          |  |
- Eroded eastern limit of Franklin Mt. Fm.
  - Eroded limit of Mt. Kindle Fm.
  - Shale-out, total, partial, of Upper Cambrian to Middle Ordovician carbonates.
  - Well location, depth in feet (') or metres (m) of Mt. Kindle / Franklin Mt. contact
  - ◇ Light colored chert common in upper part of Franklin Mt. Fm.
  - K Karsted(?) coarse crystalline dolomite, tripolitic chert, varicolored clay below contact
  - Sandstone, sandy dolomite marks the base of the Mt. Kindle Fm.
  - V Middle Ordovician volcanics
  - ▲ Field section and reference number.



G.K.W., 1988



This map has been reprinted from a scanned version of the original map. Reproduction par numérisation d'une carte sur papier.