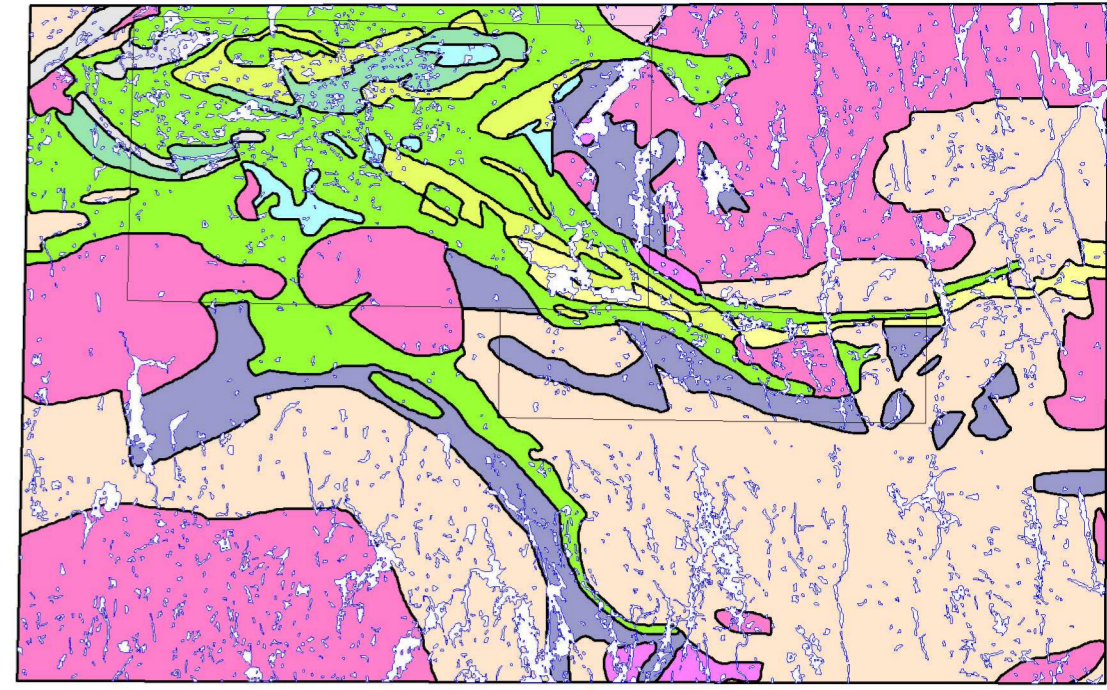
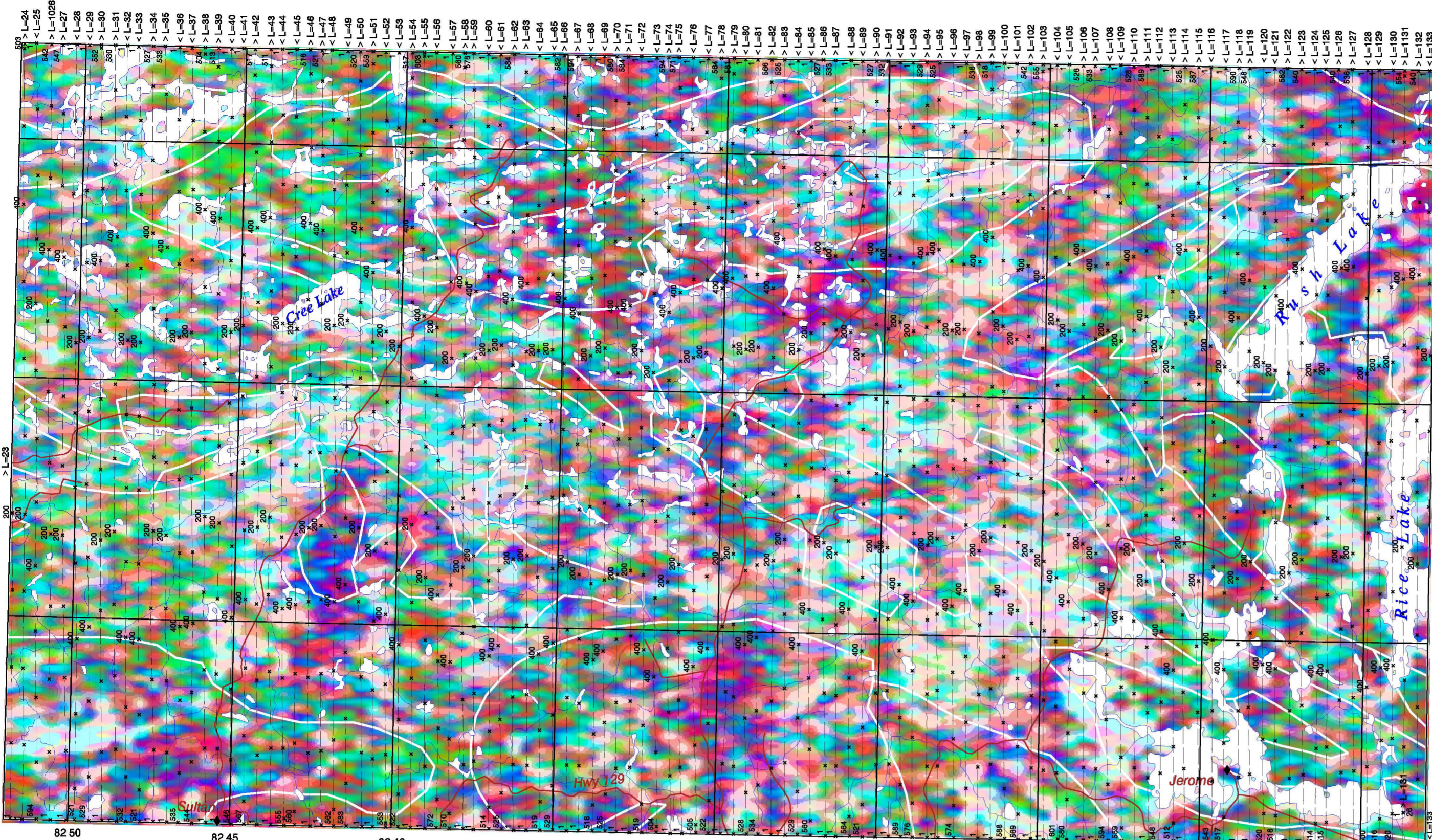
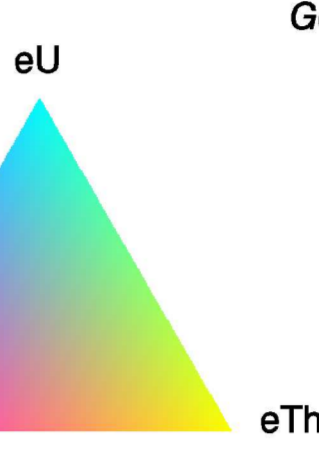




Southern Swayze Greenstone Belt
Ternary Radioelement Map / Carte Ternaire

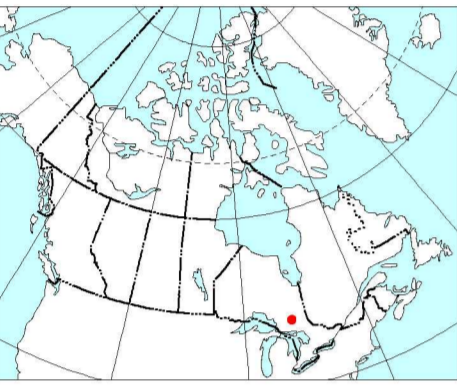


- | | | |
|--|--------------------------------------|---|
| Massive granodiorite - granitite | Mafic and ultramafic rocks | Felsic to intermediate metavolcanic rocks |
| Diorite - monzonite - granodiorite suite | Coarse clastic metasedimentary rocks | Mafic to intermediate metavolcanic rocks |
| Foliated tonalite suite | Migmatized supracrustal rocks | Mafic to ultramafic metavolcanic rocks |
| Oreitic tonalite suite | Metasedimentary rocks | |



Geology Reference Map - Swayze Area
Scale 1:800 000 / Echelle 1:800 000

Credits
Geology:
-The Ontario Geological Survey, 1991.
Bedrock geology of Ontario, east-central sheet,
Ontario Geological Survey, Map 2543, Scale 1:1,000,000.



Airborne Geophysical Survey
Levé géophysique Aéroporté
1996
Southern Swayze Greenstone Belt
Ontario

Ternary Radioelement Map
Carte Ternaire

NTS sheets
41-O/7,8,9,10 & 41 P/5,12 and
south half of NTS 41-O/15,16 & 41 P/13
Map Sheet 8B / Carte de feuille 8B
Survey flown in 1994 / Levé était effectué en 1994

CANADA ONTARIO
Contribution to Canada-Ontario Subsidary Agreement on Northern Ontario Development (1991-1995), a subsidiary agreement under the Economic and Regional Development Agreement.
Mines and Minerals
Canada

Natural Resources Canada / Ressources naturelles Canada

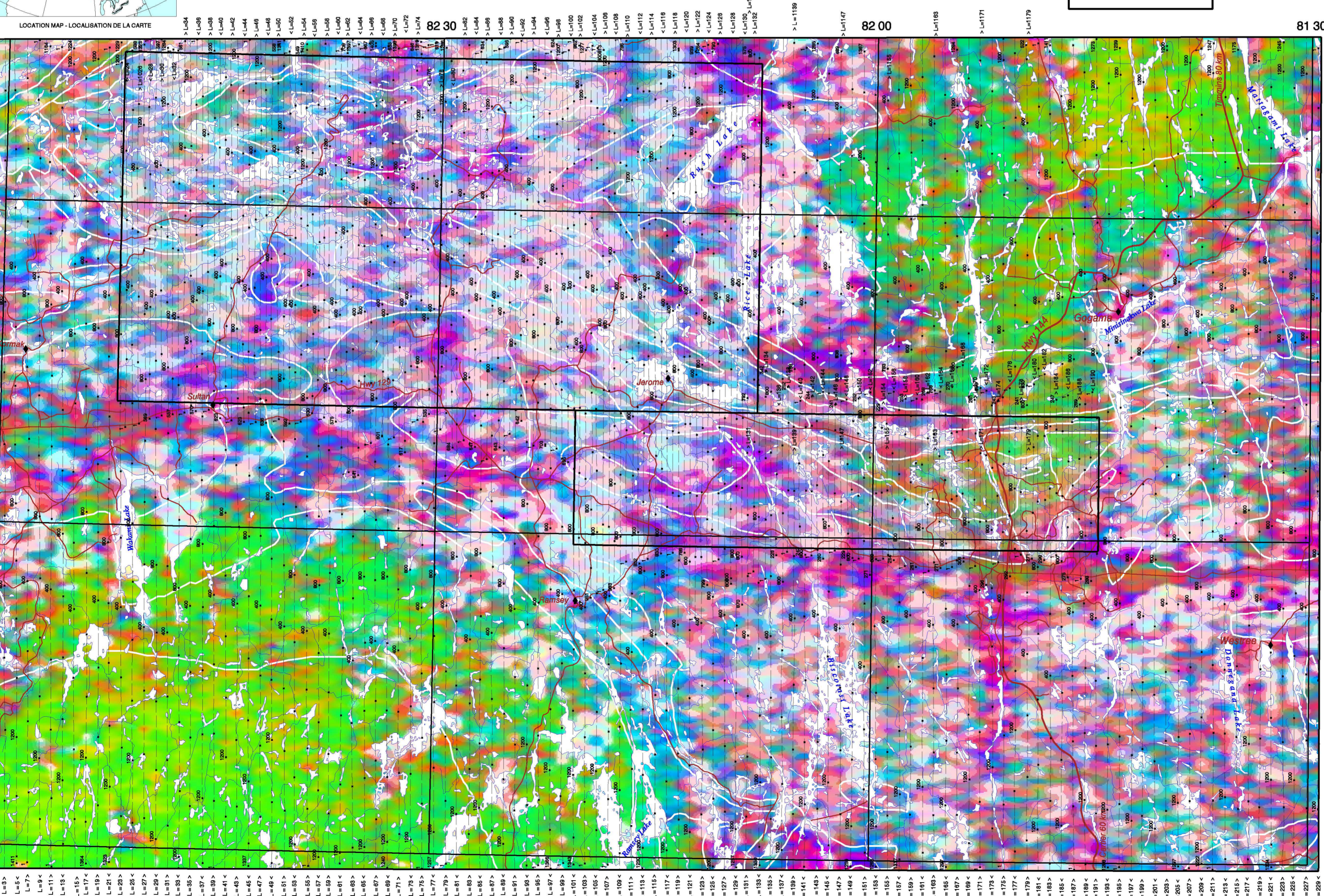


OPEN FILE
DOSSIER PUBLIC
3169
GEOLOGICAL SURVEY OF CANADA
COMMISSION GÉOLOGIQUE DU CANADA
OTTAWA
1996

Scale 1:150 000 - Échelle 1/150 000
Kilometres 2 0 2 4 6 8 10 Kilomètres
Universal Transverse Mercator Projection / Projection transversale universelle de Mercator
CM 81° West, Zone 17 / M.C. 81° Ouest, zone 17
© Crown copyrights reserved / © Droits de la Couronne réservés
Line spacing / Espacement des lignes = 500 metres
Compilation by / Compilée par R.J. Hetu, P.B. Holman
Digital cartography by / Cartographie numérique par, R.J. Hetu
Survey flown, compiled and funded by the Geological Survey of Canada
as a contribution to the Canada-Ontario Economic and Regional Development Agreement (1991-1995)
Levé a été effectué, compilé et défrayé par la Commission géologique du Canada
en contribution à l'Entente de développement économique et régional Canada-Ontario (1991-1995)



Swayze Area
Ternary Radioelement Map / Carte Ternaire



CANADA ONTARIO
Contribution to Canada-Ontario Subsidary Agreement on Northern Ontario Development (1991-1995), a subsidiary agreement under the Economic and Regional Development Agreement.
Mines and Minerals
Canada

Airborne Geophysical Survey
Levé géophysique Aéroporté
1996
Swayze Area
Ontario

Ternary Radioelement Map
Carte Ternaire

Map Sheet 8A / Carte de feuille 8A

Natural Resources Canada / Ressources naturelles Canada



OPEN FILE
DOSSIER PUBLIC
3169
GEOLOGICAL SURVEY OF CANADA
COMMISSION GÉOLOGIQUE DU CANADA
OTTAWA
1996

Scale 1:250 000 - Échelle 1/250 000
Kilometres 5 0 5 10 15 20 Kilomètres
Universal Transverse Mercator Projection / Projection transversale universelle de Mercator
CM 81° West, Zone 17 / M.C. 81° Ouest, zone 17
© Crown copyrights reserved / © Droits de la Couronne réservés
Line spacing / Espacement des lignes = 1000 metres
Compilation by / Compilée par R.J. Hetu, P.B. Holman
Digital cartography by / Cartographie numérique par, R.J. Hetu
Survey flown, compiled and funded by the Geological Survey of Canada
as a contribution to the Canada-Ontario Economic and Regional Development Agreement (1991-1995)
Levé a été effectué, compilé et défrayé par la Commission géologique du Canada
en contribution à l'Entente de développement économique et régional Canada-Ontario (1991-1995)

