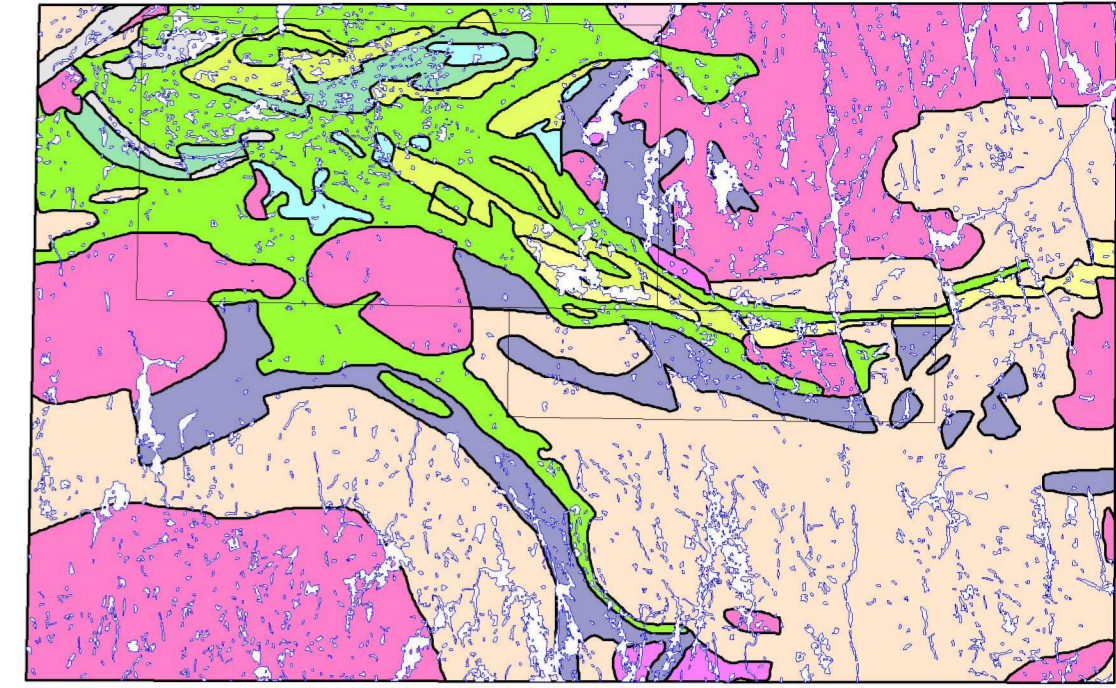
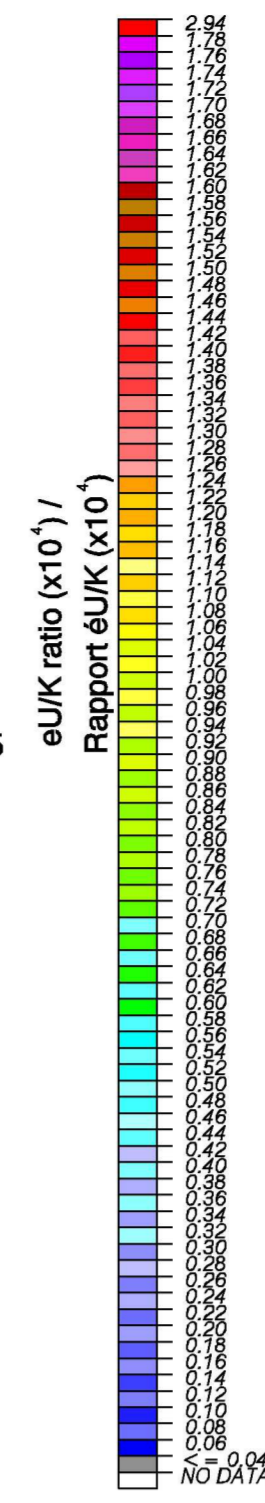
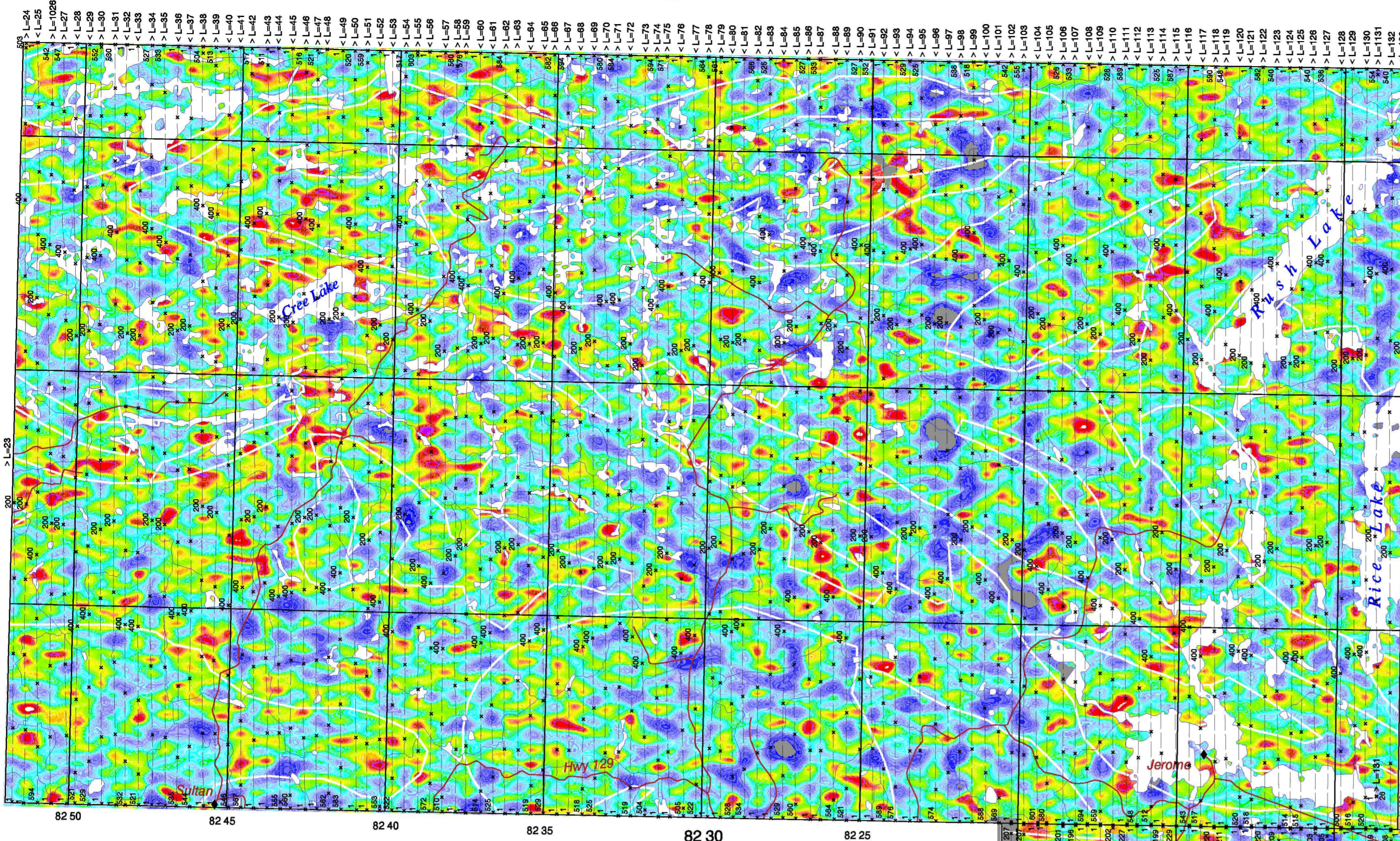




Uranium / Potassium Map / Carte d'Uranium / Potassium

Southern Swayze Greenstone Belt

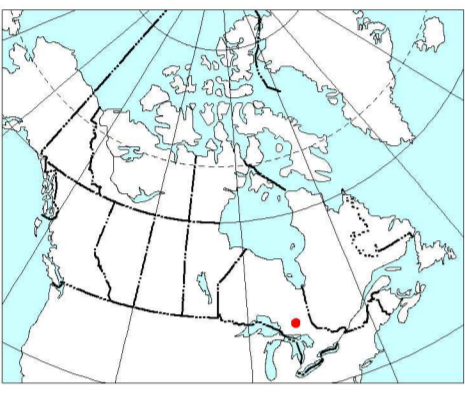


- Messive granodiorite to granite
- Diorite - monzonite - granodiorite suite
- Foliated tonalite suite
- Ornelite tonalite suite
- Mafic and ultramafic rocks
- Coarse clastic metasedimentary rocks
- Migmatized supracrustal rocks
- Metasedimentary rocks
- Felsic to intermediate metavolcanic rocks
- Mafic to intermediate metavolcanic rocks
- Mafic to ultramafic metavolcanic rocks

Geology Reference Map - Swayze Area
Scale 1:800 000 / Échelle 1:800 000

Credits

Geology:
-The Ontario Geological Survey, 1991.
Bedrock geology of Ontario, east-central sheet,
Ontario Geological Survey, Map 2543, Scale 1:1,000,000.



LOCATION MAP - LOCALISATION DE LA CARTE

Airborne Geophysical Survey
Levé géophysique Aéroporté
1996
Southern Swayze Greenstone Belt
Ontario

Uranium / Potassium Map
Carte d'Uranium / Potassium

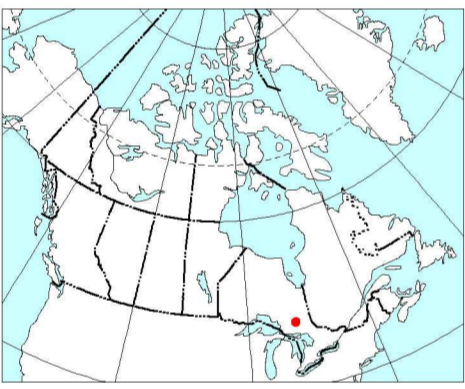


NTS sheets
41-O/7, 8, 9, 10 & 41 P/5, 12 and
south half of NTS 41-O/15, 16 & 41 P/13

Map Sheet / Carte de feuille 6B
Survey flown in 1994 / Levé aéroporté en 1994

OPEN FILE
DOSSIER PUBLIC
3169
GEOLOGICAL SURVEY OF CANADA
COMMISSION GÉOLOGIQUE DU CANADA
OTTAWA
1996

Natural Resources Canada / Ressources naturelles Canada



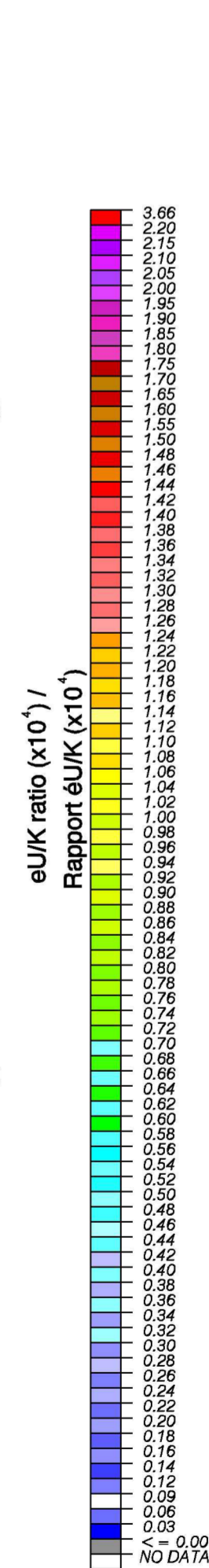
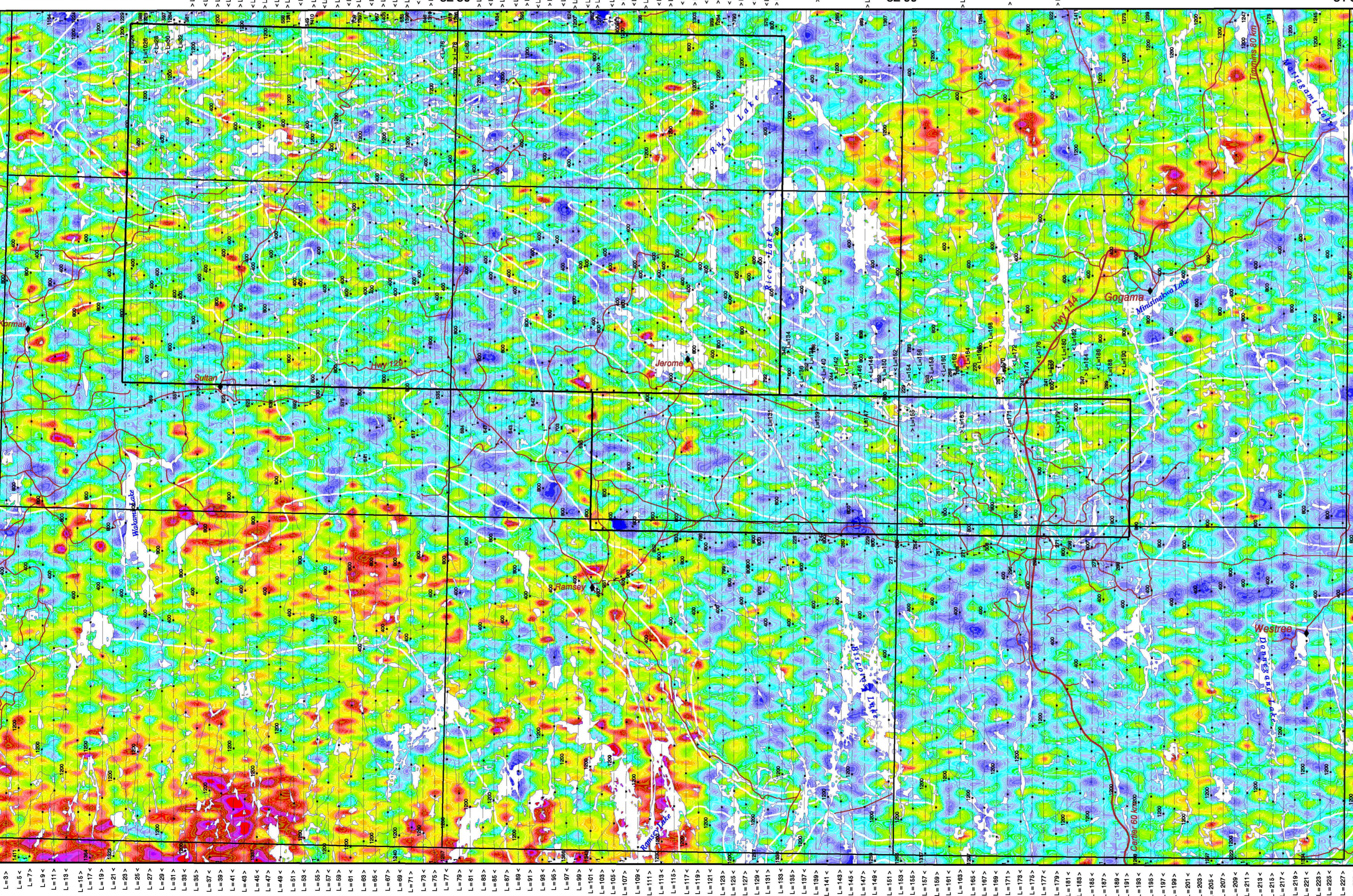
LOCATION MAP - LOCALISATION DE LA CARTE



OPEN FILE
DOSSIER PUBLIC
3169
GEOLOGICAL SURVEY OF CANADA
COMMISSION GÉOLOGIQUE DU CANADA
OTTAWA
1996

Uranium / Potassium Map / Carte d'Uranium / Potassium

Swayze Area



Scale 1:250 000 - Échelle 1/250 000
Kilometres 5 0 5 10 15 20 Kilometres

Universal Transverse Mercator Projection / Projection transverse universelle de Mercator
M.C. 81° West, Zone 17
© Crown copyrights reserved / © Droits de la Couronne réservés
Line spacing / Espacement des lignes = 1000 metres
Compilation by / Compilée par R.J. Hetu, P.B. Holman
Digital cartography by / Cartographie numérique par, R.J. Hetu

Survey flown, compiled and funded by the Geological Survey of Canada
as a contribution to the Canada-Ontario Economic and Regional Development Agreement (1991-1995)
Levé a été effectué, compilé et défrayé par la Commission géologique du Canada
en contribution à l'Entente de développement économique et régional Canada-Ontario (1991-1995)



Airborne Geophysical Survey
Levé géophysique Aéroporté
1996
Swayze Area
Ontario

Uranium / Potassium Map
Carte d'Uranium / Potassium

Natural Resources Canada / Ressources naturelles Canada



NTS sheets
41-O/7, 8, 9, 10 & 41 P/5, 12 and
south half of NTS 41-O/15, 16 & 41 P/13

Map Sheet / Carte de feuille 6A