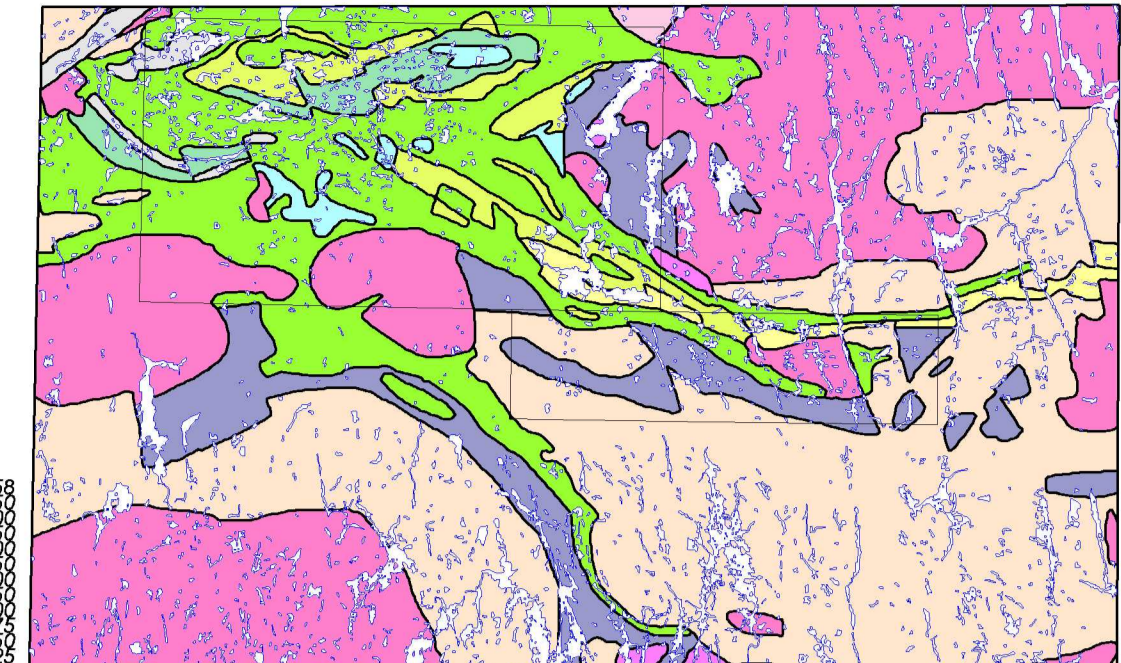
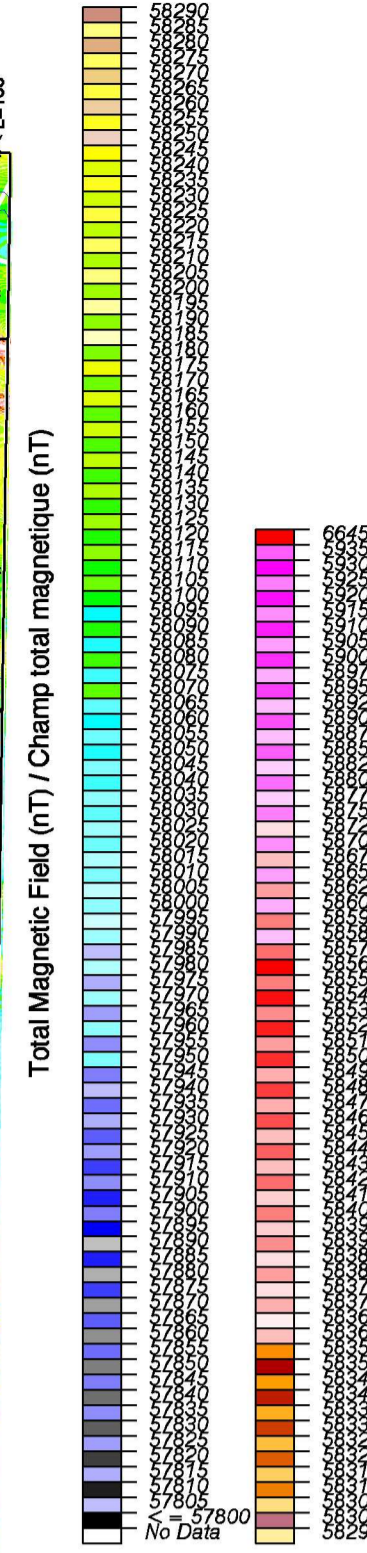
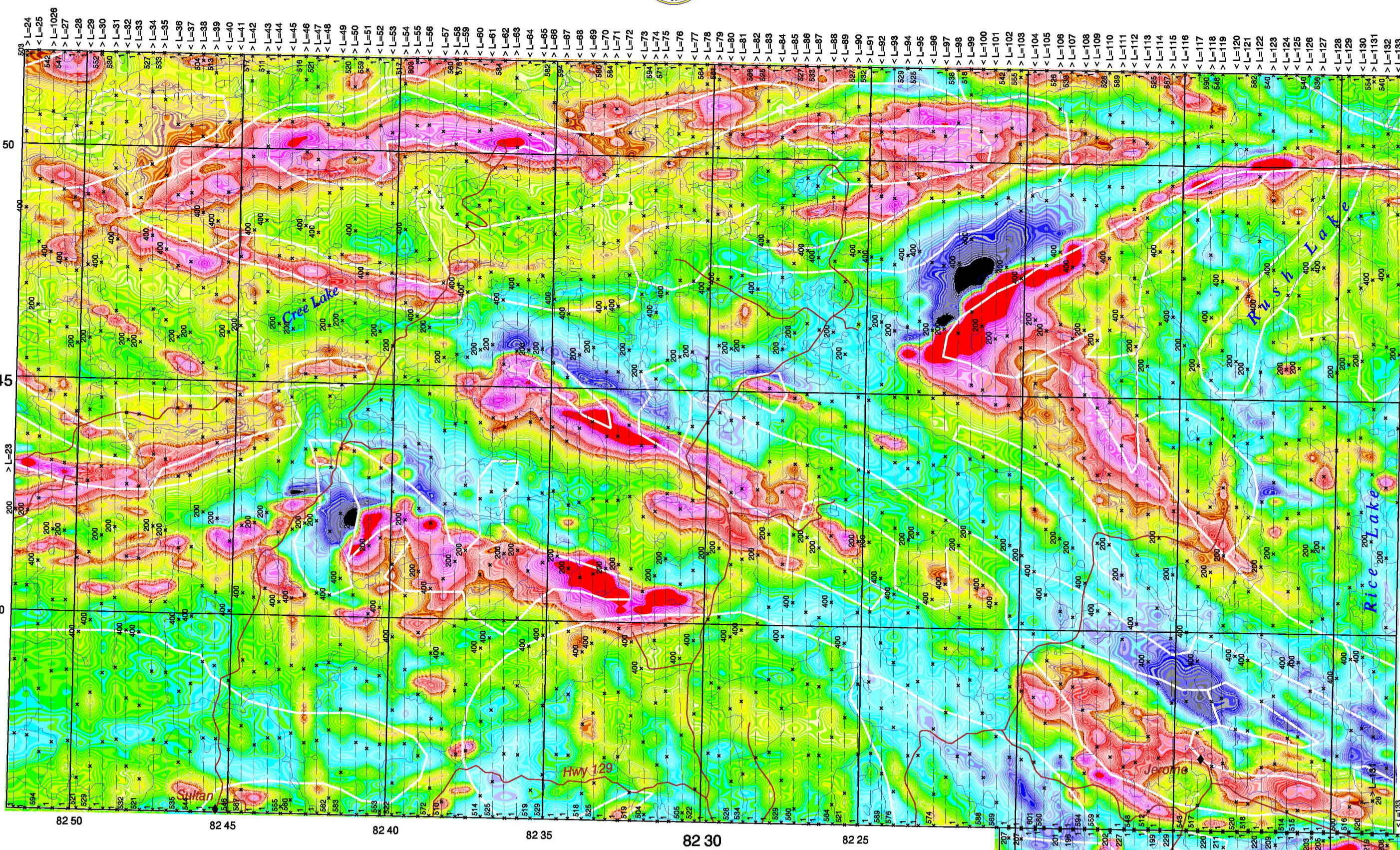




Magnetic Total Field Map / Carte de Champ total Magnétique

Southern Swayze Greenstone Belt

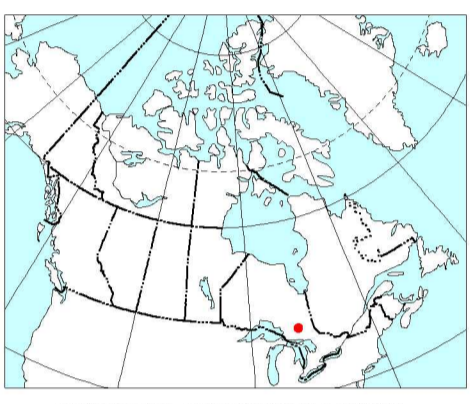


- Masseive granodiorite to granite
- Diorite - monzonite - granodiorite suite
- Foliated tonalite suite
- Gneissic tonalite suite
- Mafic and ultramafic rocks
- Coarse clastic metasedimentary rocks
- Migmatized supracrustal rocks
- Metasedimentary rocks
- Felsic to intermediate metavolcanic rocks
- Mafic to intermediate metavolcanic rocks
- Mafic to ultramafic metavolcanic rocks

Geology Reference Map - Swayze Area Scale 1:800 000 / Échelle 1:800 000

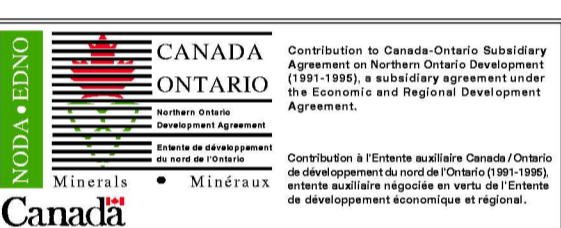
Credits

Geology: -The Ontario Geological Survey, 1991. Bedrock geology of Ontario, east-central sheet, Ontario Geological Survey, Map 254/3, Scale 1:1,000,000.



Airborne Geophysical Survey Levé géophysique Aéroporté 1996 Southern Swayze Greenstone Belt Ontario

Magnetic Total Field Map Carte de Champ total Magnétique



NTS sheets 41-O/7,8,9,10 & 41 P/5,12 and south half of NTS 41-O/15,16 & 41 P/13

Map Sheet 98 / Carte de feuille 98 Survey flown in 1994 / Levé effectué en 1994

OPEN FILE DOSSIER PUBLIC 3169 GEOLOGICAL SURVEY OF CANADA COMMISSION GÉOLOGIQUE DU CANADA OTTAWA 1996

Natural Resources Canada / Ressources naturelles Canada



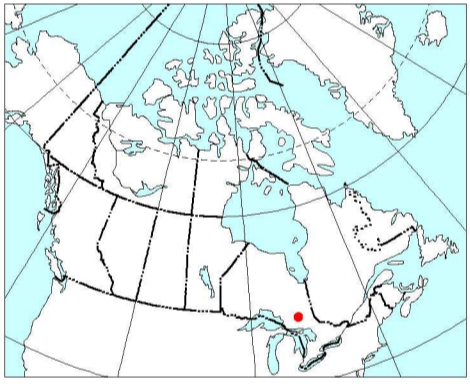
Scale 1:150 000 - Échelle 1/150 000

Universal Transverse Mercator Projection / Projection transversale universelle de Mercator

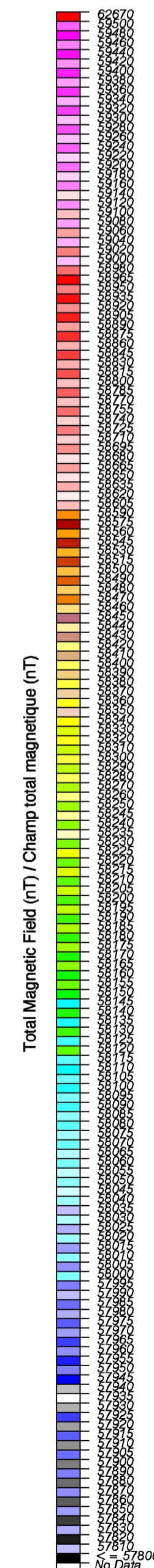
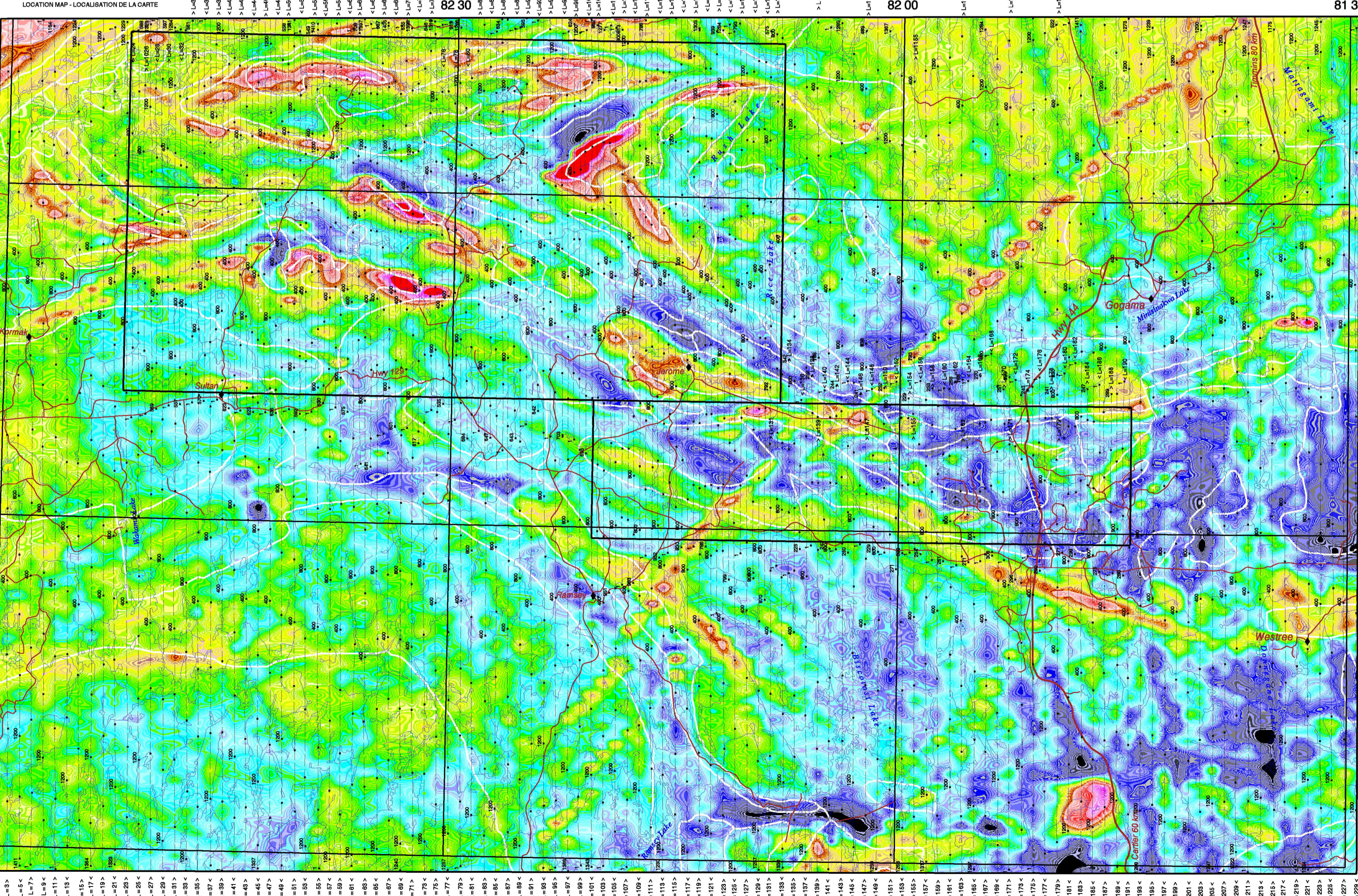
Line spacing / Espacement des lignes = 500 metres

Compilation by / Compilée par R.J. Helu, P.B. Holman Digital cartography by / Cartographie numérique par, R.J. Helu

Survey flown, compiled and funded by the Geological Survey of Canada as a contribution to the Canada-Ontario Economic and Regional Development Agreement (1991-1995)



OPEN FILE DOSSIER PUBLIC 3169 GEOLOGICAL SURVEY OF CANADA COMMISSION GÉOLOGIQUE DU CANADA OTTAWA 1996



Airborne Geophysical Survey Levé géophysique Aéroporté 1996 Swayze Area Ontario

Magnetic Total Field Map Carte de Champ total Magnétique



NTS sheets 41-O/7,8,9,10 & 41 P/5,12 and south half of NTS 41-O/15,16 & 41 P/13

Map Sheet 9A / Carte de feuille 9A

Scale 1:250 000 - Échelle 1/250 000

Universal Transverse Mercator Projection / Projection transversale universelle de Mercator

Line spacing / Espacement des lignes = 1000 metres

Compilation by / Compilée par R.J. Helu, P.B. Holman Digital cartography by / Cartographie numérique par, R.J. Helu

Survey flown, compiled and funded by the Geological Survey of Canada as a contribution to the Canada-Ontario Economic and Regional Development Agreement (1991-1995)

Natural Resources Canada / Ressources naturelles Canada



Magnetic Total Field Map / Carte de Champ total Magnétique

Swayze Area