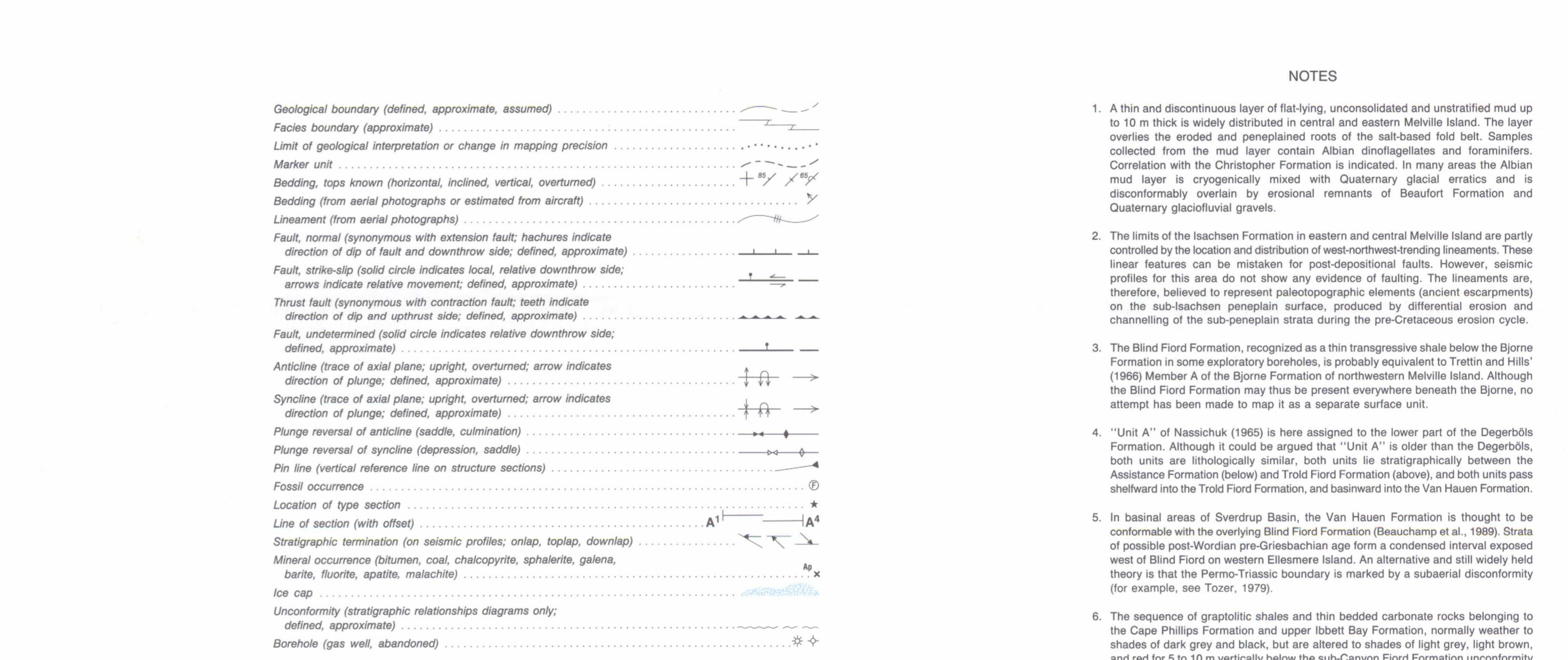
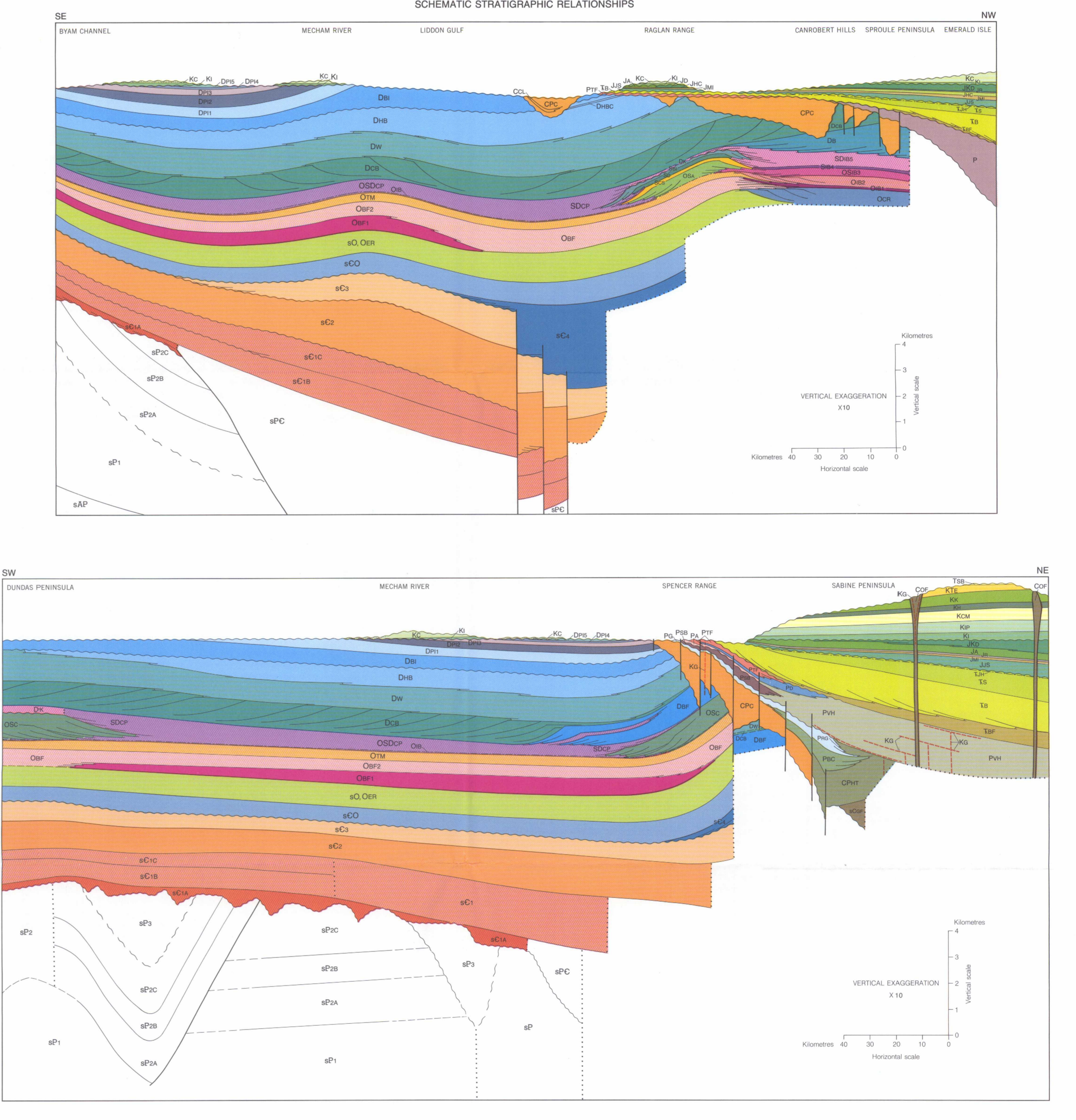


Table of geological units for the Sverdrup Basin Succession, categorized by Quaternary, Cretaceous and Tertiary, Mesozoic, Permian, Carboniferous and Permian, and Paleozoic.

Table of geological units for the Melville Island and adjacent smaller islands, categorized by Quaternary, Cretaceous and Tertiary, Mesozoic, Permian, Carboniferous and Permian, and Paleozoic.



Geological boundary (defined, approximate, assumed) symbols and their meanings, including fault types and structural features.

Notes regarding geological interpretations, stratigraphic relationships, and specific observations from field work.

Table of geological units for the Franklinian Succession, categorized by Devonian, Silurian and Devonian, and Paleozoic.

Table of geological units for the Intra-shelf basin and embayment facies, categorized by Paleozoic.

Table of geological units for the Shelf and shelf rim facies, categorized by Devonian, Silurian, and Paleozoic.

Table of geological units for the Towson Point carbonate platform facies, categorized by Devonian, Silurian, and Paleozoic.

Table of geological units for the Deep water basin facies, categorized by Paleozoic.

Table of geological units for the Reflection seismic succession (sAP-sO), categorized by Paleozoic.

Table of geological units for the Devonian and Middle Devonian facies, categorized by Paleozoic.

Table of geological units for the Silurian and Devonian facies, categorized by Paleozoic.

Table of geological units for the Paleozoic, categorized by Paleozoic.

Table of geological units for the Paleozoic, categorized by Paleozoic.

Table of geological units for the Paleozoic, categorized by Paleozoic.

Table of geological units for the Paleozoic, categorized by Paleozoic.