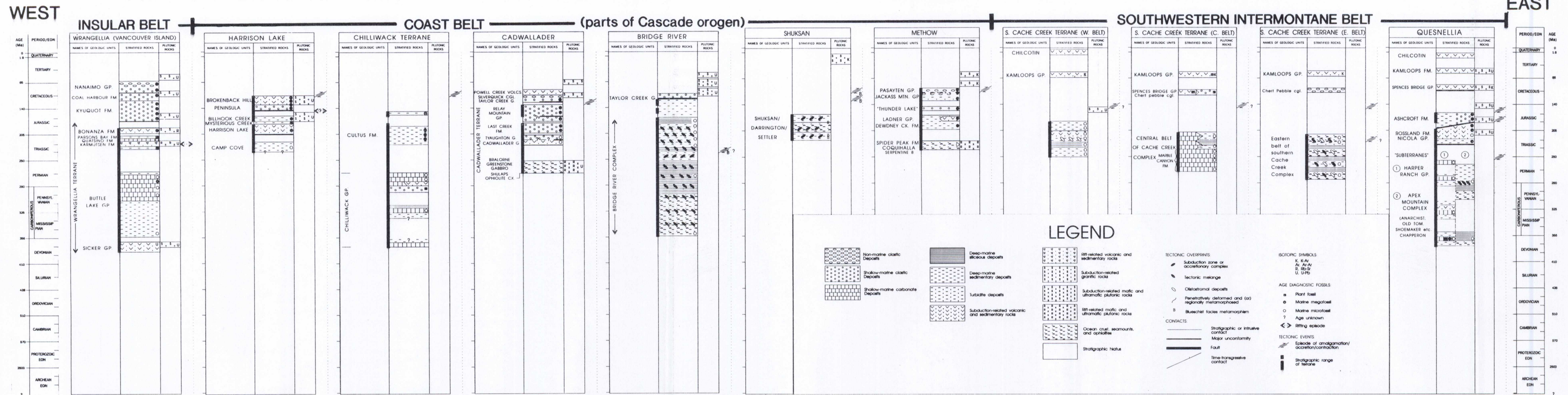


**FIGURE 8 : CORRELATION CHART; TERRANES, STRATIGRAPHIC UNITS, PLUTONIC ROCKS AND INFERRED TECTONIC SETTINGS**



Compiled by T. Feeney, from terrane columns prepared as part of the Canadian contribution, by Monger, J.W.H., Gordey, S.P. and Feeney, T., to the Circum-North Pacific tectonostratigraphic terrane map, to be published by the United States Geological Survey; project under the direction of W.J. Nockleberg

This map has been produced from a scanned version of the original map  
Reproduction par numérisation d'une carte sur papier