

PHYSIOGRAPHIC AND TECTONIC FEATURES

LEGEND

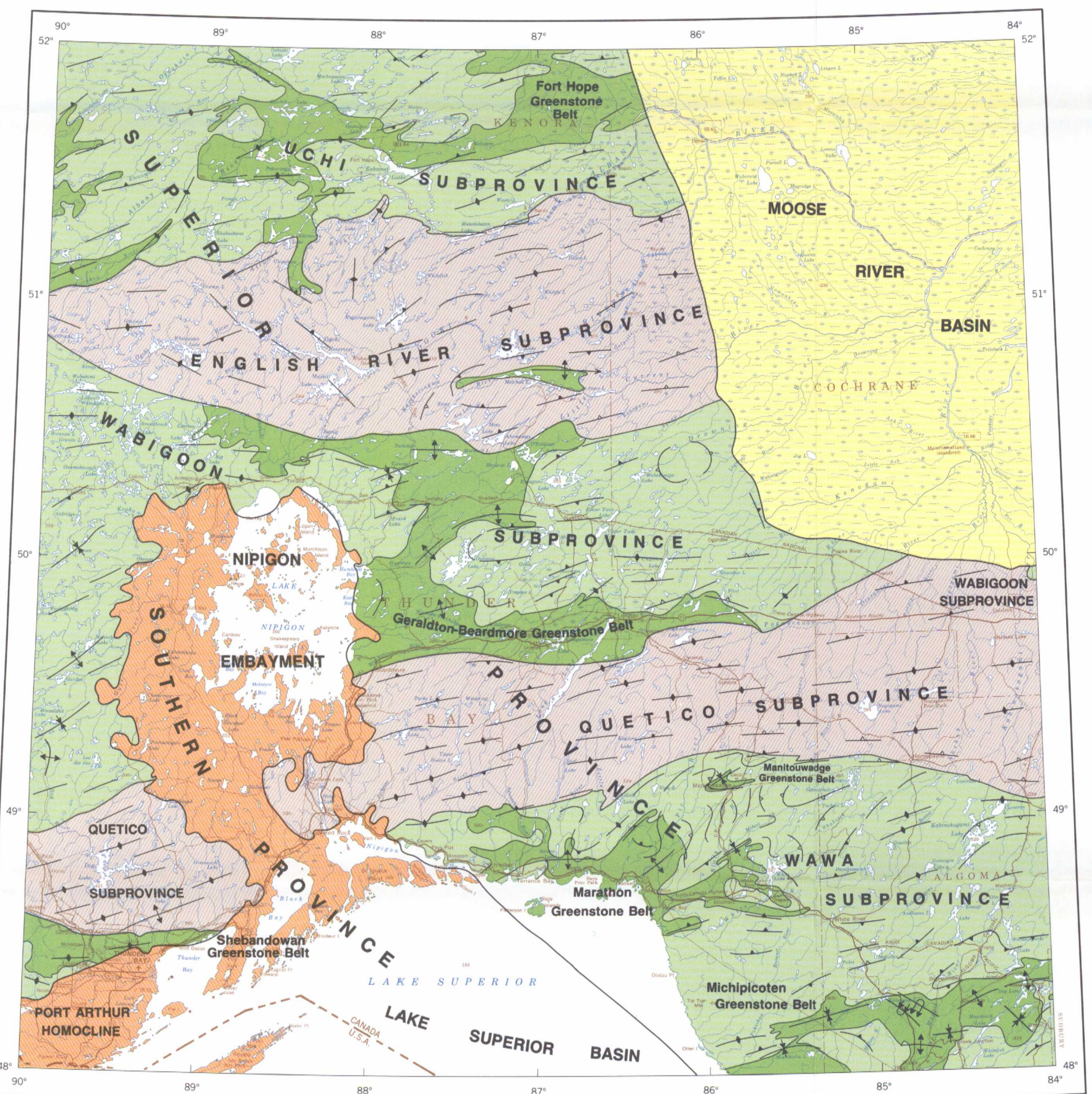
- Physiographic regions
- Geological provinces
- Geological subprovinces
- Geological belts and zones
- Correlation chart boundary (number represents column number on correlation charts)



INDEX MAP OF MAJOR COMPILATION SOURCES

MAJOR COMPILATION SOURCES
LAKE NIPIGON (NM-16-G)
1:1 000 000 COMPILATION

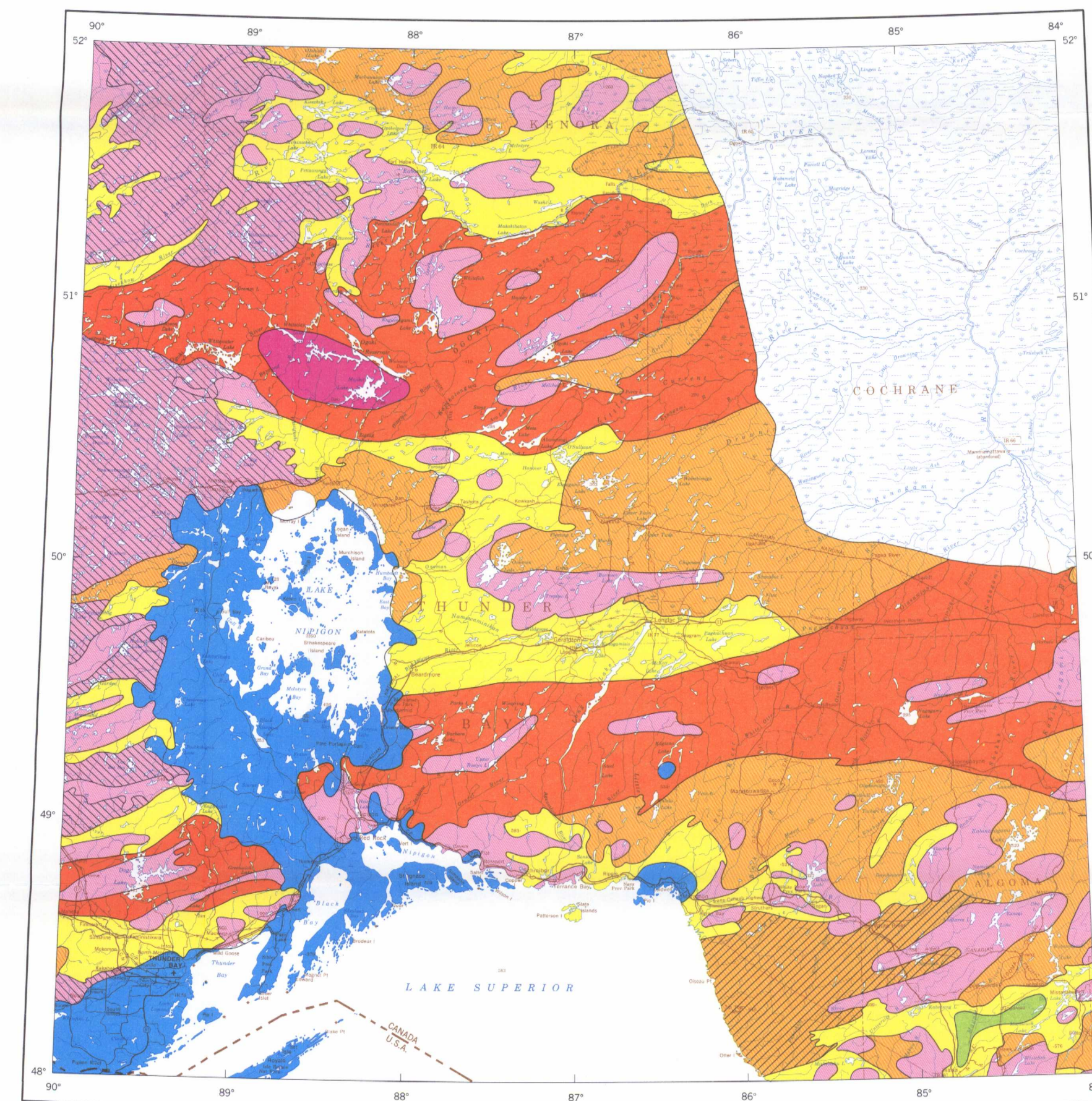
ONTARIO GEOLOGICAL SURVEY		GEOLOGICAL SURVEY OF CANADA	
1	2210 Glasgow, Meath, Rennie Townships, 1/2 mile, 1971	46	2415 Willet Lake, 1/2 mile, 1979
2	2129 Dayohessarah Lake, 2 miles, 1966	47	2373 Elmhurst, Rickaby Townships, 1978
3	2219 Granitehill Lake, 1 mile, 1972	48	2354 Tashola, 1/2 mile, 1977
4	2047 Flanders Lake, 1 mile, 1964	49	2429 Conglomerate Lake, 1/2 mile, 1980
5	2140 Kaganan Lake, 1 mile, 1967	50	2362 Esnago Lake, 1 mile, 1978
6	2141 Stevens sheet, 1 mile, 1967	51	2304 Black Bay Peninsula, 1 mile, 1975
7	2280 Mapledoram-Gemmill, 1000 feet, 1974	52	2379 Opkeigen Lake, 1/2 mile, 1978
8	2145 Agonazon Lake, 1/2 mile, 1967	53	2416 Miminiska Peninsula, 1/2 mile, 1978
9	2146 Dotted Lake, 1/2 mile, 1968	54	2417 Wotam Lake, 1/2 mile, 1979
10	2147 White Lake, 1/2 mile, 1968	55	2436 Atwood Lake, 1/2 mile, 1981
11	2144 Gowan Lake, 1/2 mile, 1968	56	2218 Cat Lake-Pickle Lake, 4 miles, 1976
12	2143 Barehead Lake, 1/2 mile, 1967	57	1962 Pashokogan-Caribou Lakes, 2 miles, 1974
13	2099 Bamooos Lake, 1/2 mile, 1966	58	1963 Obonga Lake-Lac des lacs, 2 miles, 1974
14	2098 Cirrus Lake, 1/2 mile, 1966	59	2409 Fletcher Lake west, 1/2 mile, 1981
15	2192 Vein Lake, 1 mile, 1970	60	2410 Fletcher Lake east, 1/2 mile, 1981
16	2191 Killala Lake, 1 mile, 1970	61	2528 Grand Bay, 1.50 000, 1982
17	2107 Jackfish-Middleton, 1/2 mile, 1967	62	2529 Shakespeare Island, 1.50 000, 1982
18	2112 Cairngorm Lake, 1/2 mile, 1966	63	2530 Orient Bay, 1.50 000, 1982
19	2285 St. Ignace Island, Adjacent Islands, 1 mile, 1974	64	2531 Black Sturgeon Lake, 1.50 000, 1982
20	2023 Big Duck Lake, 1/2 mile, 1963	65	602 Summers Township, 1/4 mile, 1970
21	2293 Dickson Lake, 1 mile, 1974	66	601 Eva Township, 1/4 mile, 1970
22	2056 Georgia Lake, 1 mile, 1965	67	1999 Gedhill Lake, 1/4 mile, 1974
23	2294 Dorothea, Sandra, Irwin Townships, 1/2 mile, 1974	68	1192 Colter Township, 1/4 mile, 1976
24	2100 Crescent Lake, 1 mile, 1966	69	2379 Klob Lake east, 1/4 mile, 1980
25	2202 Carman-Pagwa River, 4 miles, 1971	70	2380 Klob Lake west, 1/4 mile, 1980
26	2232 Nipigon-Schreiber, 4 miles, 1973	71	2302 Matchnamegus Lake west, 1/4 mile, 1979
27	2102 Tashota-Geraldton, 4 miles, 1966	72	2303 Matchnamegus Lake east, 1/4 mile, 1979
28	2237 Fort Hope-Landsdowne House, 4 miles, 1972	73	1561 Latta Marshall Lake, 1/4 mile, 1977
29	2411 Onaman Lake, 1/2 mile, 1980	74	1191 Legault Township, 1/4 mile, 1973
30	2234 Fraser Lake, 1 mile, 1971	75	2310 Howard Falls north, 1/4 mile, 1979
31	2233 Black Sturgeon Lake, 1 mile, 1971	76	2311 Howard Falls south, 1/4 mile, 1979
32	2235 Deraill Lake, 1 mile, 1971	77	2304 State Islands, 1/4 mile, 1975
33	2236 Shillabeer Creek, 1 mile, 1971	78	1068 Chipman Lake, 1/4 mile, 1976
34	2058 Garden Lake, 1 mile, 1964	79	1981 Heron Bay north, 1/4 mile, 1978
35	2135 Lac des lacs, 1/2 mile, 1967	80	1982 Heron Bay south, 1/2 mile, 1978
36	2136 Max Lake, 1/2 mile, 1967	81	2304 Hermio north, 1/4 mile, 1979
37	2172 Eays-Starnes Lakes, 1 mile, 1969	82	2305 Hermio south, 1/4 mile, 1979
38	2169 Sioux Lookout-Armstrong, 4 miles, 1970	83	2392 Melchett Lake west, 1/4 mile, 1981
39	2065 Atkokan-Lakehead, 4 miles, 1965	84	2393 Melchett Lake east, 1/4 mile, 1981
40	2332 Pujakawa River, 1 mile, 1977	85	2556 Terrace Bay west, 1/4 mile, 1982
41	2333 University River, 1 mile, 1977	86	2557 Terrace Bay east, 1/4 mile, 1982
42	2353 Kabinakagami Lake, 1 mile, 1977	87	2440 Geological Highway Map, N. Ontario, 1:1 600 000, 1981
43	2355 Riggs, West Townships, 1/2 mile, 1978		
44	2356 Walters, Leduc Townships, 1/2 mile, 1976		



LITHO-TECTONIC SUBDIVISIONS

LEGEND

- MOOSE RIVER BASIN**
 - Paleozoic and Mesozoic sedimentary rocks
- SOUTHERN PROVINCE**
 - Proterozoic sedimentary (Animikie, Sibley groups), Volcanic (Keweenaw Oolite Group) and intrusive (Logan sill) rocks
- SUPERIOR PROVINCE**
 - Archean greenstone-granite terranes
 - Archean metasedimentary terranes
- Province boundary
- Subprovince boundary
- Belts and zones
- Foliation (< 45°, > 45°, vertical, dip unknown)
- Antiform (arrow indicates plunge)
- Synform
- Antiform and synform (overturned)



PRECAMBRIAN METAMORPHISM

LEGEND

- Granulite facies
- Amphibolite to lower granulite facies (Migmatite zone)
- Amphibolite facies; mixed amphibolite facies and unmetamorphosed to weakly metamorphosed plutonic rocks
- Greenschist and lower amphibolite facies
- Greenschist facies
- Unmetamorphosed to weakly metamorphosed Proterozoic supracrustal and intrusive rocks
- Unmetamorphosed to weakly metamorphosed Archean plutonic rocks; with areas of amphibolite facies rocks
- Unmetamorphosed Phanerozoic cover

Geological compilation by K.D. Card, J.A. Percival and B.V. Sanford, 1982
 Contributions by R.P. Sage, Ontario Geological Survey
 Reviewed by R. Sutcliffe and P.C. Thurston, Ontario Geological Survey
 Geological cartography by P.M. O'Regan, Geological Survey of Canada
 Base map reduced from 1:1 000 000 scale, published by Surveys and Mapping Branch in 1971 with some modification by the Geological Survey of Canada for this edition

This 1:2 000 000 scale map is part of the Geological Atlas of Canada and is plotted on the International Map of the World (IMW) base. Geology is one parameter being published in the National Earth Science Series

LAKE NIPIGON
ONTARIO-U.S.A.
GEOLOGICAL ATLAS, MAP NM-16-G
SHEET 5 OF 5
GENERAL CO-ORDINATOR: A.V. OKULITCH

