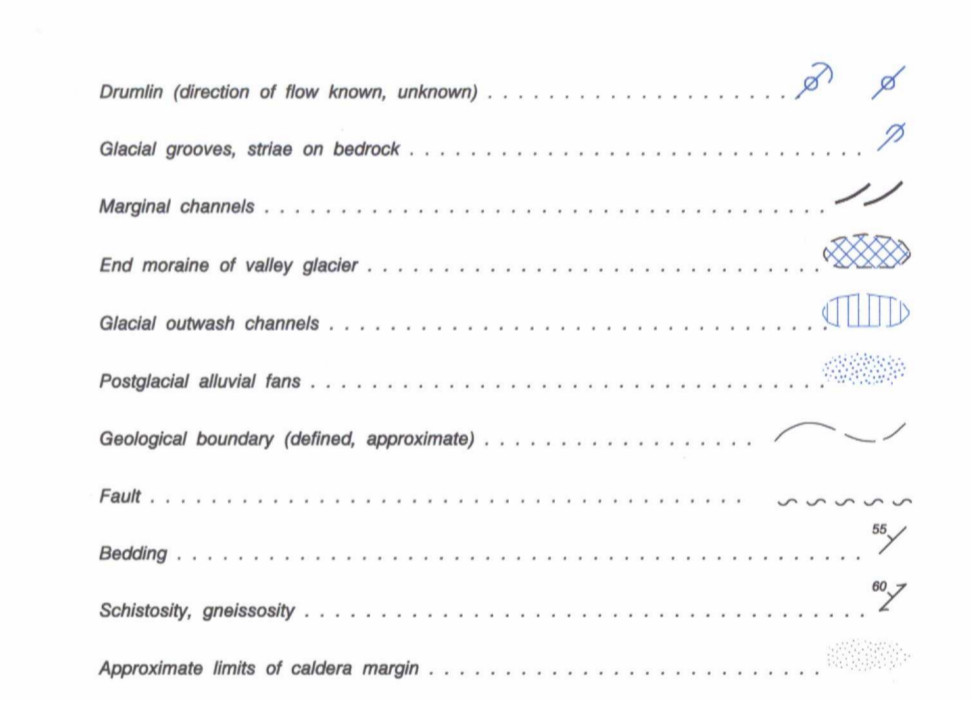
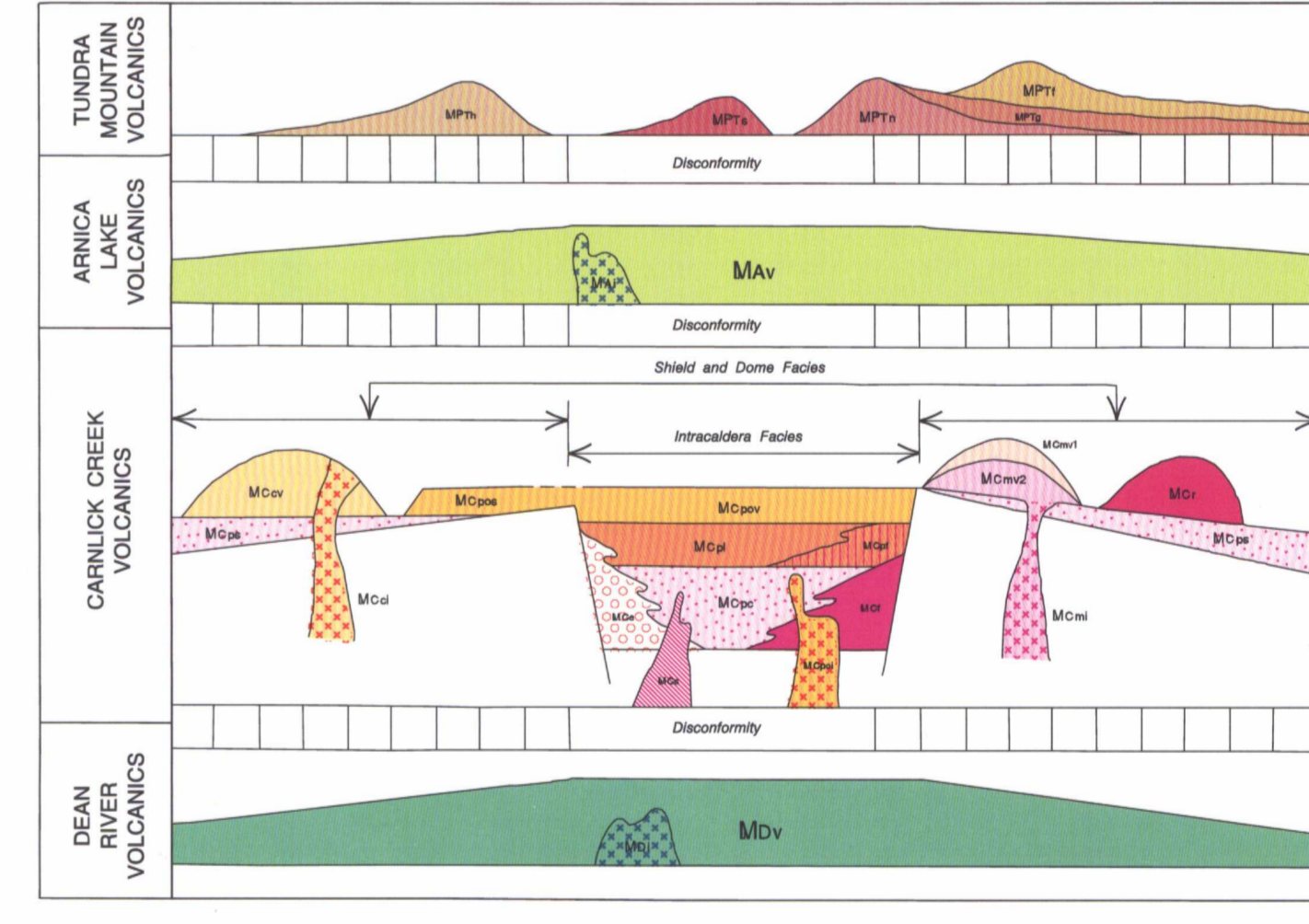


LEGEND

- SURFICIAL DEPOSITS**
QUATERNARY
 Pleistocene and Recent
- Q1 Mosaic, silt, clay, water-laid deposits
 - Q2 Undifferentiated fluvial terrace (mainly gravelly sand)
 - Q3 Deposition on terraces (silt and fine sand)
 - Q4 Driftwood terrace (undifferentiated glacial)
 - Q5 Filled terraces
 - Q6 Undifferentiated alluvial (silt, clay, sand, gravel, and fine shales) or, some include silt and clay
- TERTIARY**
 Pliocene or younger
 Fluvial basalt
- P1 Oligo- to Miocene basalt (basalt in part)
 - P2 Proterozoic (P) flow
- ITONA GROUP**
- P3 Concretionary basalt flows
 - P4 Basalt flows
- LATE MIOCENE AND EARLY PLIOCENE**
 ILGACHUZ GROUP (M1-M10)
 Late Miocene to Pliocene
 Tundra Mountain Volcanics
- M10 Fluvial basalt (dark grey, very fine grained, aphyric basalt)
 - M9 Gravelly basalt (dark grey, very fine grained, aphyric basalt)
 - M8 Gravelly basalt (dark grey, very fine grained, aphyric basalt)
 - M7 Gravelly basalt (dark grey, very fine grained, aphyric basalt)
 - M6 Gravelly basalt (dark grey, very fine grained, aphyric basalt)
 - M5 Gravelly basalt (dark grey, very fine grained, aphyric basalt)
 - M4 Gravelly basalt (dark grey, very fine grained, aphyric basalt)
 - M3 Gravelly basalt (dark grey, very fine grained, aphyric basalt)
 - M2 Gravelly basalt (dark grey, very fine grained, aphyric basalt)
 - M1 Gravelly basalt (dark grey, very fine grained, aphyric basalt)
- LATE MIOCENE**
- M11 Early Miocene (dark grey, very fine grained, aphyric basalt)
 - M12 Early Miocene (dark grey, very fine grained, aphyric basalt)
 - M13 Early Miocene (dark grey, very fine grained, aphyric basalt)
 - M14 Early Miocene (dark grey, very fine grained, aphyric basalt)
 - M15 Early Miocene (dark grey, very fine grained, aphyric basalt)
 - M16 Early Miocene (dark grey, very fine grained, aphyric basalt)
 - M17 Early Miocene (dark grey, very fine grained, aphyric basalt)
 - M18 Early Miocene (dark grey, very fine grained, aphyric basalt)
 - M19 Early Miocene (dark grey, very fine grained, aphyric basalt)
 - M20 Early Miocene (dark grey, very fine grained, aphyric basalt)
 - M21 Early Miocene (dark grey, very fine grained, aphyric basalt)
 - M22 Early Miocene (dark grey, very fine grained, aphyric basalt)
 - M23 Early Miocene (dark grey, very fine grained, aphyric basalt)
 - M24 Early Miocene (dark grey, very fine grained, aphyric basalt)
 - M25 Early Miocene (dark grey, very fine grained, aphyric basalt)
 - M26 Early Miocene (dark grey, very fine grained, aphyric basalt)
 - M27 Early Miocene (dark grey, very fine grained, aphyric basalt)
 - M28 Early Miocene (dark grey, very fine grained, aphyric basalt)
 - M29 Early Miocene (dark grey, very fine grained, aphyric basalt)
 - M30 Early Miocene (dark grey, very fine grained, aphyric basalt)
 - M31 Early Miocene (dark grey, very fine grained, aphyric basalt)
 - M32 Early Miocene (dark grey, very fine grained, aphyric basalt)
 - M33 Early Miocene (dark grey, very fine grained, aphyric basalt)
 - M34 Early Miocene (dark grey, very fine grained, aphyric basalt)
 - M35 Early Miocene (dark grey, very fine grained, aphyric basalt)
 - M36 Early Miocene (dark grey, very fine grained, aphyric basalt)
 - M37 Early Miocene (dark grey, very fine grained, aphyric basalt)
 - M38 Early Miocene (dark grey, very fine grained, aphyric basalt)
 - M39 Early Miocene (dark grey, very fine grained, aphyric basalt)
 - M40 Early Miocene (dark grey, very fine grained, aphyric basalt)
 - M41 Early Miocene (dark grey, very fine grained, aphyric basalt)
 - M42 Early Miocene (dark grey, very fine grained, aphyric basalt)
 - M43 Early Miocene (dark grey, very fine grained, aphyric basalt)
 - M44 Early Miocene (dark grey, very fine grained, aphyric basalt)
 - M45 Early Miocene (dark grey, very fine grained, aphyric basalt)
 - M46 Early Miocene (dark grey, very fine grained, aphyric basalt)
 - M47 Early Miocene (dark grey, very fine grained, aphyric basalt)
 - M48 Early Miocene (dark grey, very fine grained, aphyric basalt)
 - M49 Early Miocene (dark grey, very fine grained, aphyric basalt)
 - M50 Early Miocene (dark grey, very fine grained, aphyric basalt)
 - M51 Early Miocene (dark grey, very fine grained, aphyric basalt)
 - M52 Early Miocene (dark grey, very fine grained, aphyric basalt)
 - M53 Early Miocene (dark grey, very fine grained, aphyric basalt)
 - M54 Early Miocene (dark grey, very fine grained, aphyric basalt)
 - M55 Early Miocene (dark grey, very fine grained, aphyric basalt)
 - M56 Early Miocene (dark grey, very fine grained, aphyric basalt)
 - M57 Early Miocene (dark grey, very fine grained, aphyric basalt)
 - M58 Early Miocene (dark grey, very fine grained, aphyric basalt)
 - M59 Early Miocene (dark grey, very fine grained, aphyric basalt)
 - M60 Early Miocene (dark grey, very fine grained, aphyric basalt)
 - M61 Early Miocene (dark grey, very fine grained, aphyric basalt)
 - M62 Early Miocene (dark grey, very fine grained, aphyric basalt)
 - M63 Early Miocene (dark grey, very fine grained, aphyric basalt)
 - M64 Early Miocene (dark grey, very fine grained, aphyric basalt)
 - M65 Early Miocene (dark grey, very fine grained, aphyric basalt)
 - M66 Early Miocene (dark grey, very fine grained, aphyric basalt)
 - M67 Early Miocene (dark grey, very fine grained, aphyric basalt)
 - M68 Early Miocene (dark grey, very fine grained, aphyric basalt)
 - M69 Early Miocene (dark grey, very fine grained, aphyric basalt)
 - M70 Early Miocene (dark grey, very fine grained, aphyric basalt)
 - M71 Early Miocene (dark grey, very fine grained, aphyric basalt)
 - M72 Early Miocene (dark grey, very fine grained, aphyric basalt)
 - M73 Early Miocene (dark grey, very fine grained, aphyric basalt)
 - M74 Early Miocene (dark grey, very fine grained, aphyric basalt)
 - M75 Early Miocene (dark grey, very fine grained, aphyric basalt)
 - M76 Early Miocene (dark grey, very fine grained, aphyric basalt)
 - M77 Early Miocene (dark grey, very fine grained, aphyric basalt)
 - M78 Early Miocene (dark grey, very fine grained, aphyric basalt)
 - M79 Early Miocene (dark grey, very fine grained, aphyric basalt)
 - M80 Early Miocene (dark grey, very fine grained, aphyric basalt)
 - M81 Early Miocene (dark grey, very fine grained, aphyric basalt)
 - M82 Early Miocene (dark grey, very fine grained, aphyric basalt)
 - M83 Early Miocene (dark grey, very fine grained, aphyric basalt)
 - M84 Early Miocene (dark grey, very fine grained, aphyric basalt)
 - M85 Early Miocene (dark grey, very fine grained, aphyric basalt)
 - M86 Early Miocene (dark grey, very fine grained, aphyric basalt)
 - M87 Early Miocene (dark grey, very fine grained, aphyric basalt)
 - M88 Early Miocene (dark grey, very fine grained, aphyric basalt)
 - M89 Early Miocene (dark grey, very fine grained, aphyric basalt)
 - M90 Early Miocene (dark grey, very fine grained, aphyric basalt)
 - M91 Early Miocene (dark grey, very fine grained, aphyric basalt)
 - M92 Early Miocene (dark grey, very fine grained, aphyric basalt)
 - M93 Early Miocene (dark grey, very fine grained, aphyric basalt)
 - M94 Early Miocene (dark grey, very fine grained, aphyric basalt)
 - M95 Early Miocene (dark grey, very fine grained, aphyric basalt)
 - M96 Early Miocene (dark grey, very fine grained, aphyric basalt)
 - M97 Early Miocene (dark grey, very fine grained, aphyric basalt)
 - M98 Early Miocene (dark grey, very fine grained, aphyric basalt)
 - M99 Early Miocene (dark grey, very fine grained, aphyric basalt)
 - M100 Early Miocene (dark grey, very fine grained, aphyric basalt)
- MIOCENE AND YOUNGER**
 COLUMBIAN GROUP
- C1 Basalt flows, interbedded with andesite
- EARLY TERTIARY AND/OR OLDER**
 OLYMPIA GROUP
- O1 Interbedded phyllites, shales, and andesite flows, breccias, and associated tuff
 - O2 Basaltic quartz porphyry intrusion
 - O3 Tuff Lake Mesoproterozoic Core Complex
- JURASSIC (?)**
- J1 Interbedded quartz diorite intrusion
- TRASSIC (?) AND JURASSIC**
 HAZELTON GROUP (in part)
- T1 Andesite breccias, flows, and associated tuff
 - T2 Diabases, phyllites, light shales and shales
 - T3 Intermediate volcanic rocks: minor andesite



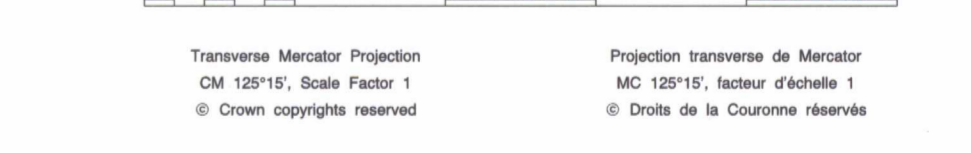
Geology by J.S. Doucet and M.E.K. Suther, 1983, 1985-86, 1990
 Digital cartography by M. Siquin, Geological Survey of Canada
 Any mention of additional geological information known to the user must be reported to the Geological Survey of Canada
 Also see comments by the Geological Survey of Canada for maps 1847A (1985) and 1847B (1985) published as the same issue of the Survey's Mapping Series
 Copies of the topographic information used in this map may be obtained from the Canada Map Office, Department of Natural Resources Canada, Ottawa, Canada, O1A 0S2
 Map scale: 1:50 000 (1:50 000) (1:50 000) (1:50 000)
 Horizontal datum: NAD 83
 Vertical datum: CGVD 85
 Geographical names subject to revision
 Elevations in feet above mean sea level



GEOLOGICAL SURVEY OF CANADA / COMMISSION GÉOLOGIQUE DU CANADA

MAP 1845A
 GEOLOGY
ILGACHUZ RANGE AND ADJACENT PARTS OF THE INTERIOR PLATEAU
 BRITISH COLUMBIA

Scale 1:50 000 - Échelle 1:50 000



Traverse Number: 1845A
 Projection: Transverse Mercator
 Datum: NAD 83
 Units: Meters

