



Topographic contours in metres / Topographic contours in feet

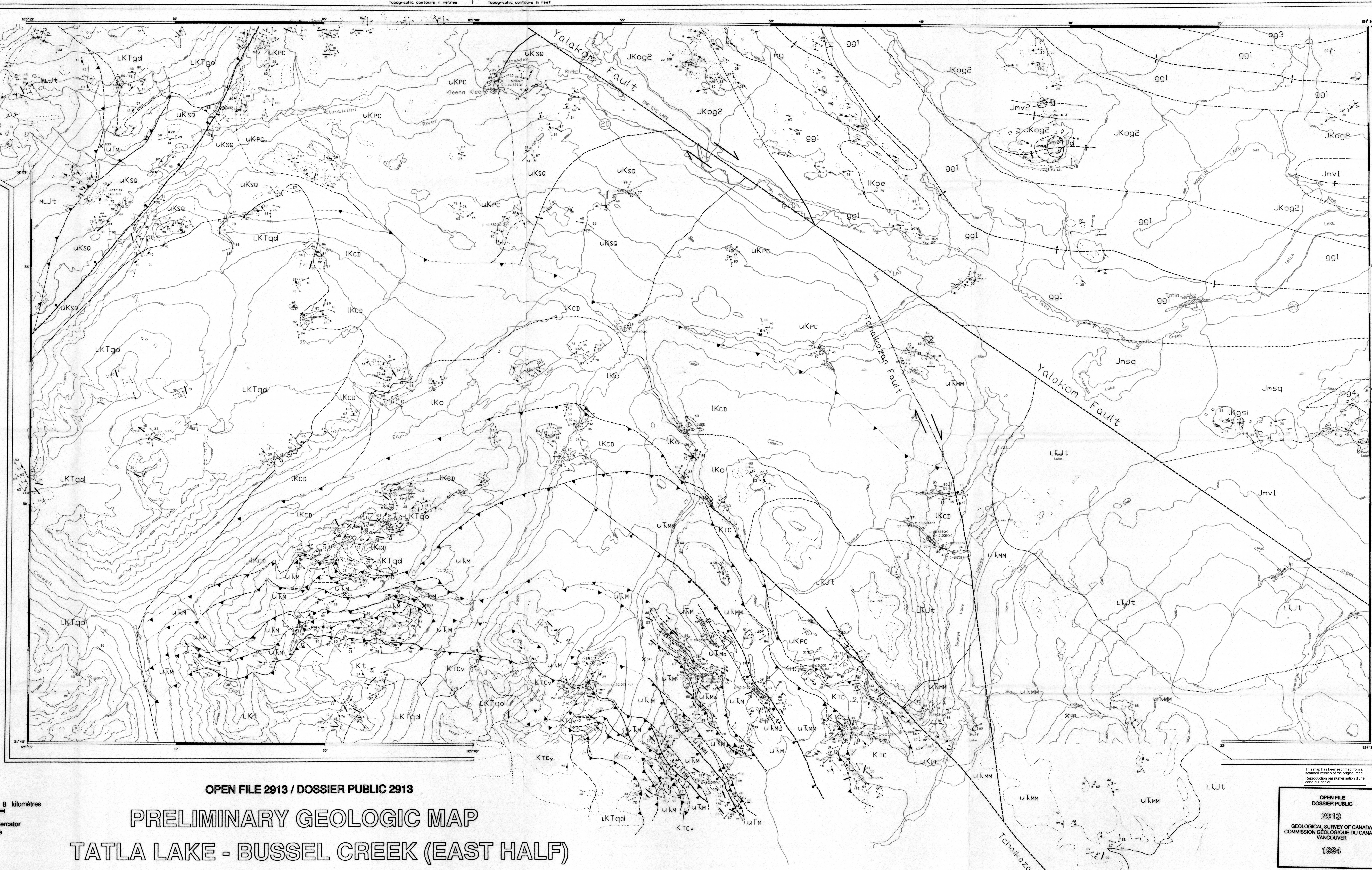
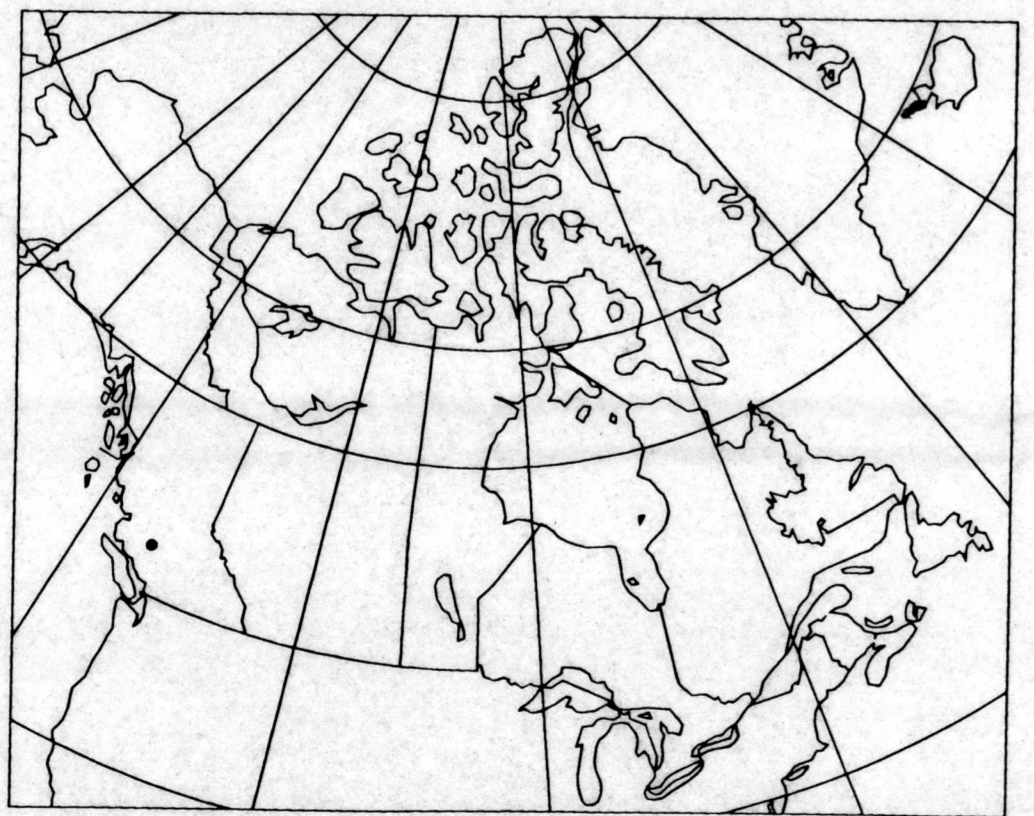


Geology by P.S. Mustard, P. van der Heyden, 1993
 R. Friedman, 1988 (northeast of Yalakom Fault)
 Previous Geology by Tipper, 1969
 New Paleontology by Haggart, 1994; Orchard, 1994; Tzavar, 1994
 Previous Paleontology by Tipper, 1969; Jelocky and Tipper, 1968
 Geochronology by R. Friedman, 1988, 1993, 1994
 Geologic compilation by P.S. Mustard and P. van der Heyden, 1994

Suggested Citation:
 Mustard, P.S., van der Heyden, P., Friedman, R.
 1994. Preliminary geologic map: Tatla Lake -
 Busseel Creek (east half), NTS 92N/15,
 92N/14 (east half), Geological Survey of
 Canada, Open File 2913, 1:50 000 map.

125° 00'	124° 00'	
92° 15'	92° 15'	
93 C/3	93 C/2	93 C/1
92 N/14	92 N/15	92 N/16
92 N/11	92 N/10	92 N/9
51° 30'	51° 30'	
125° 30'	124° 00'	

National Topographic System Reference



kilomètres 2 0 2 4 6 8 kilomètres
 Universal Transverse Mercator Projection / Projection transversale universelle de Mercator
 © Crown Copyrights reserved / © Droits de la Couronne réservés

OPEN FILE 2913 / DOSSIER PUBLIC 2913
PRELIMINARY GEOLOGIC MAP
TATLA LAKE - BUSSEL CREEK (EAST HALF)
 BRITISH COLUMBIA

OPEN FILE
 DOSSIER PUBLIC
 2913
 GEOLOGICAL SURVEY OF CANADA
 COMMISSION GÉOLOGIQUE DU CANADA
 VANCOUVER
 1994