

DESCRIPTIVE NOTES

Spatsis River map area is outlined by Paleozoic to upper Tertiary volcanic, sedimentary and igneous rocks which contain abundant fossils...

Each of the major stratigraphic units is outlined uniformly by the Paleozoic to Permian fossils... The Paleozoic strata are limited to the northwest with the exception of Permian(?) marble (Pm) in the Spatsis River valley...

ACKNOWLEDGMENTS

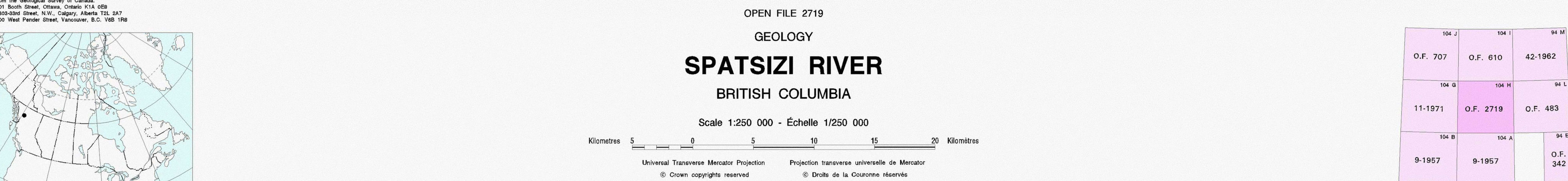
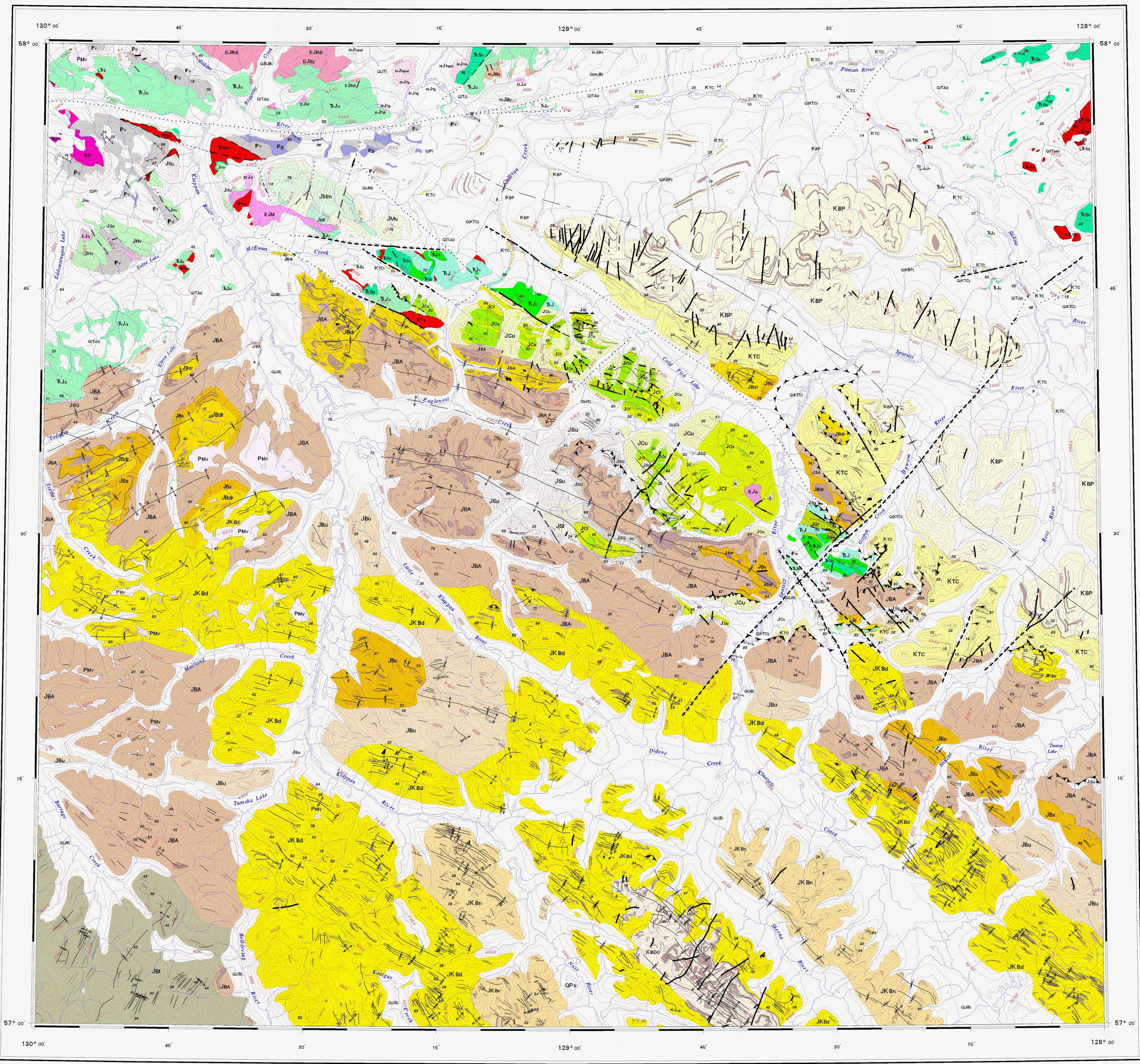
G. Gable and R. W. Tupper have provided much insight on the geology of Spatsis River map area...

REFERENCES
Coffey, F., Jones, D.L., and Morgan, J.W.H. 1964. Geology of the Spatsis Terrane, British Columbia...

Gable, G. 1967. Late Paleozoic and Mesozoic tectonic tectonics in north-western British Columbia...

Geology by C.A. Evanovich (1986-1990), D.J. Thorburn (1986-1989), P.E. Mawhood (1986), C.A. Rowe (1986), and G.W. Owen (1986-1990). Map compilation by C.A. Evanovich and D.J. Thorburn.

Digital geological cartography by S. Chuvpik, D. Chan, R. Coaking, D. Dunn, C. Evanovich, T. Feeley, and M. Sigman. Magnetic declination 1989 varies from 29°54' easterly in the northwest corner to 29°10' easterly in the southeast corner.



LEGEND
QUATERNARY
PLEISTOCENE AND RECENT
PUBERTOCENE
TERTIARY
CRETACEOUS
JURASSIC AND CRETACEOUS
JURASSIC
MIDDLE TO UPPER JURASSIC
LOWER MIDDLE JURASSIC
EARLY AND MIDDLE JURASSIC
LOWER AND MIDDLE JURASSIC
LOWER TO MIDDLE TRIASSIC
LOWER JURASSIC
LOWER PERMIAN-BASIN
EARLY JURASSIC
UPPER TRASSIC TO LOWER JURASSIC
TRIASSIC
UPPER TRASSIC
LATE TRASSIC OR EARLY JURASSIC
TRIASSIC
UPPER TRASSIC
TRIASSIC