

BUTTES
HELMET
c-12-L

APL et al
HELMET
a-6-K

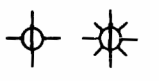
TOTAL
HELMET
d-13-K

FPC et al
HELMET
b-11-K

SPOG et al
HELMET
d-19-J

HIGHFIELD
HELMET
c-1-J

WESTCOAST et al
KIMEA
b-7-L



Jean Marie

Slave Point

Slave Point

+500 -
SL -
-500 -
-1000 -
-1500 -
-2000 -
-2500 -
-3000 -
-3500 -
-4000 -
-4500 -

+500
- SL
-500
-1000
-1500
-2000
-2500
-3000
-3500
-4000
-4500

FEET SUBSEA

BANFF

EXSHAW
KOTCHO

TETCHO

TROUT RIVER
KAKISA
REDKNIFE

JEAN MARIE

FT. SIMPSON

MUSKWA

SLAVE

POINT

KLUA

DIPS

0-1°

0-1°

0-1°

CHAOTIC

0-1°

1.59mmcf/d
Jean Marie
produced
1.6Bcf:
depleted 1983

33' m

59' m

295' m

Organic
(reefal)
Is.
2880'
G.C.S.W.
170m

GTS TSTM
625 sf.s.w.
Spud Feb.2. 1976
RR Feb.24. 1976
Gas Prod. Feb.24. 1976
Last Produced Feb. 1983
Cumulative Prod.:
(Jean Marie)
Gas Water
1.627Bcf 873bbbl

8.17mmcf
8.17
mmcf
GTS TSTM
WTS
No DST

8.17mmcf

8.17
mmcf

GTS TSTM
WTS

No DST

MR

No DST

No DST

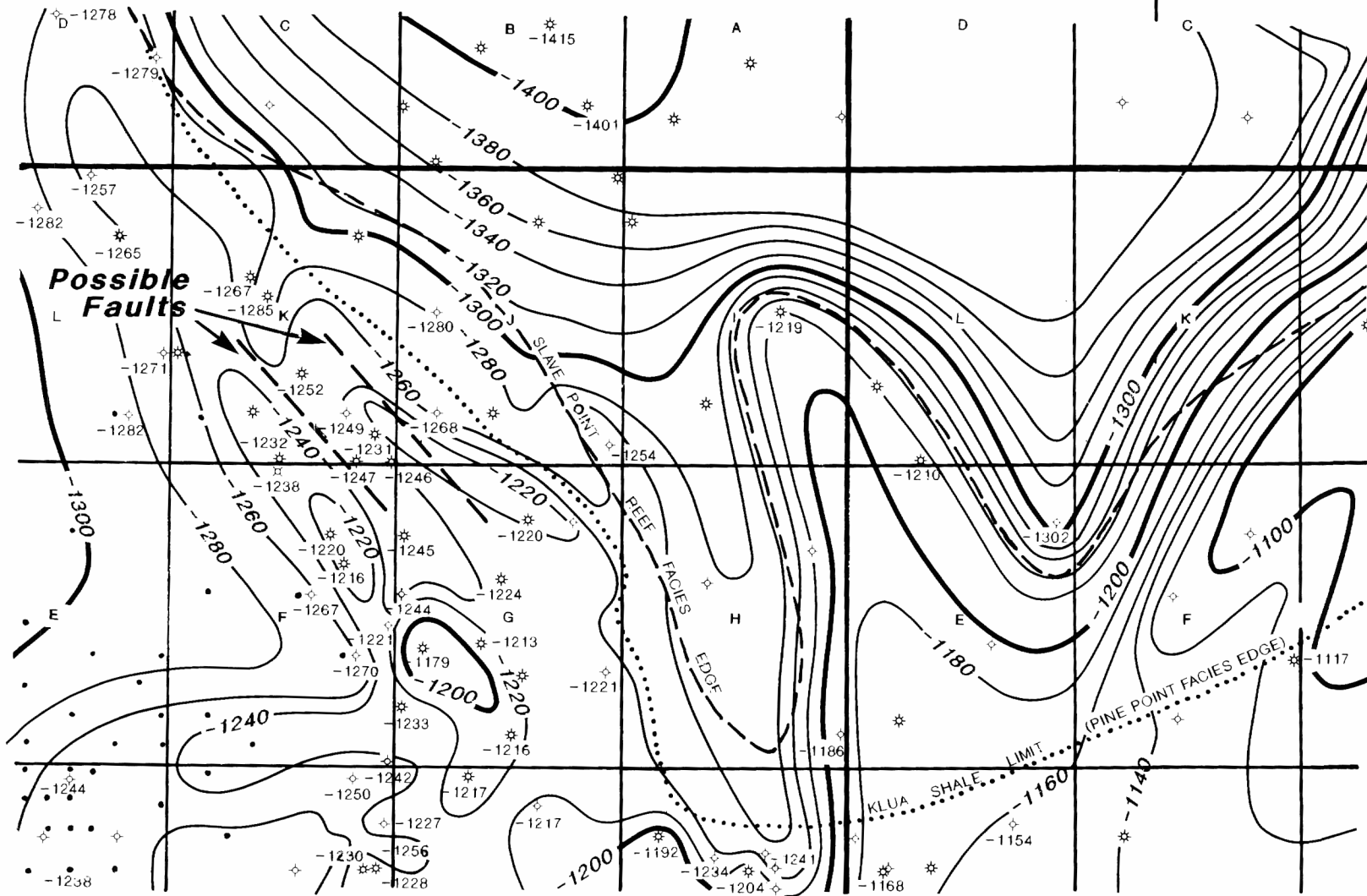
0.049mmcf

0.012mmcf

0.003mmcf

360' w. 270' m

This map has been reprinted from a scanned version of the original map. Reproduction par numérisation d'une carte sur papier.



94-P-7

94-P-8

N.E.B.C. DEVONIAN GAS STUDY	
HELMET NORTH STRUCTURE SECTION	
ISPG CALGARY 1991	L.L. BELL
Vert. 1inch=200feet	DRAWN BY: P.P.

OPEN FILE
DOSSIER PUBLIC
2684
GEOLOGICAL SURVEY
COMMISSION GEOLOGIQUE
OTTAWA

ENCLOSURE 9