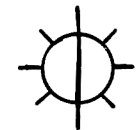
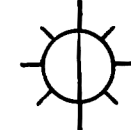


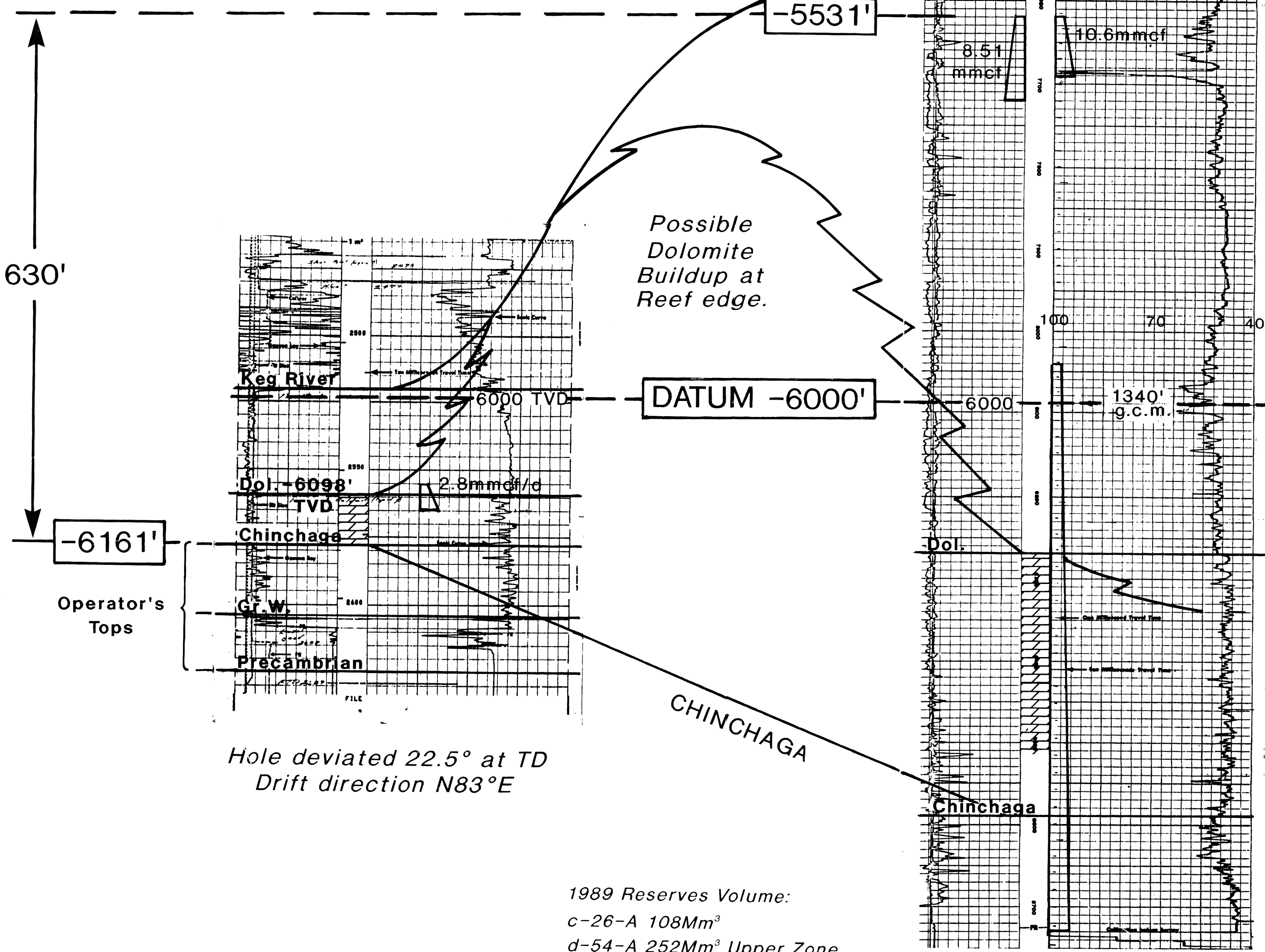
EXCEL
MISSILE
c-26-A 94-O-9
KB 2149'



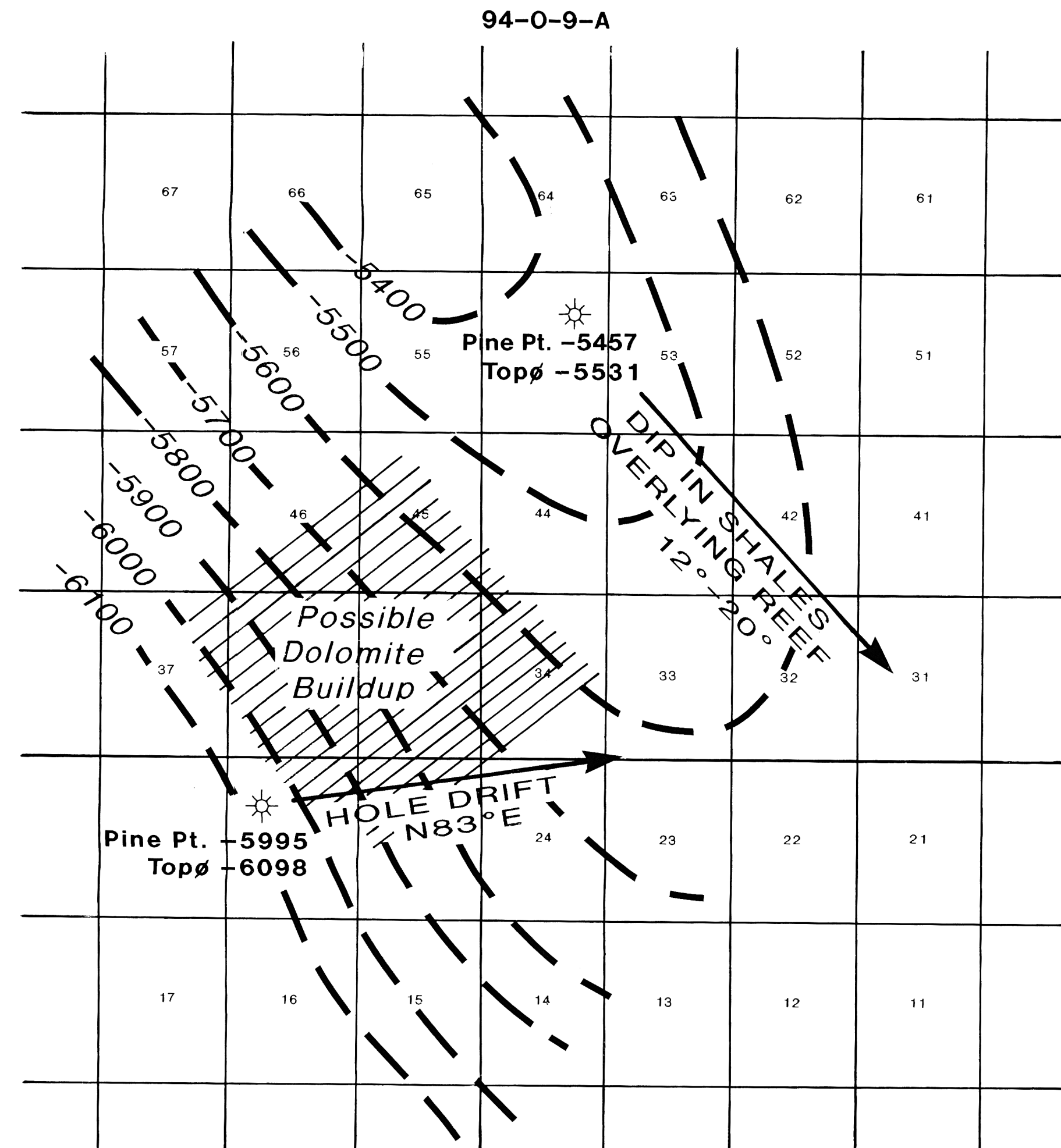
TEX NFA
MISSILE
d-54-A 94-O-9
KB 2089'



Gas zones in pressure communication; indicated gas column $\leq 630'$



1989 Reserves Volume:
c-26-A 108Mm³
d-54-A 252Mm³ Upper Zone
115Mm³ Lower Zone
475Mm³ = 16.7Mmcf (16.7Bcf)



SCM TOP PINE POINT REEF

CI-100 Feet

Strong SE dips in shale overlying reef in d-54-A well indicate reef is appreciably higher to NW. Pronounced deviation to east in c-26-A well suggests steep reef flank in this direction. No seismic available. Pressure continuity between gas zones (PE plot) may indicate presence of dolomite buildup as shown, and much larger reserves than currently assigned.

(B.C. Dep't. E&MR)

This map has been reprinted from a scanned version of the original map. Reproduction par numérisation d'une carte sur papier.

OPEN FILE
DOSSIER PUBLIC
2684
GEOLOGICAL SURVEY
COMMISSION GÉOLOGIQUE
OTTAWA

| | |
|--|-----------|
| N.E.B.C. DEVONIAN GAS STUDY | |
| MISSILE AREA STRUCTURAL DISPLAY | |
| ISPG CALGARY 1991 | L.L. BELL |
| DRAWN BY: P.P. | |