

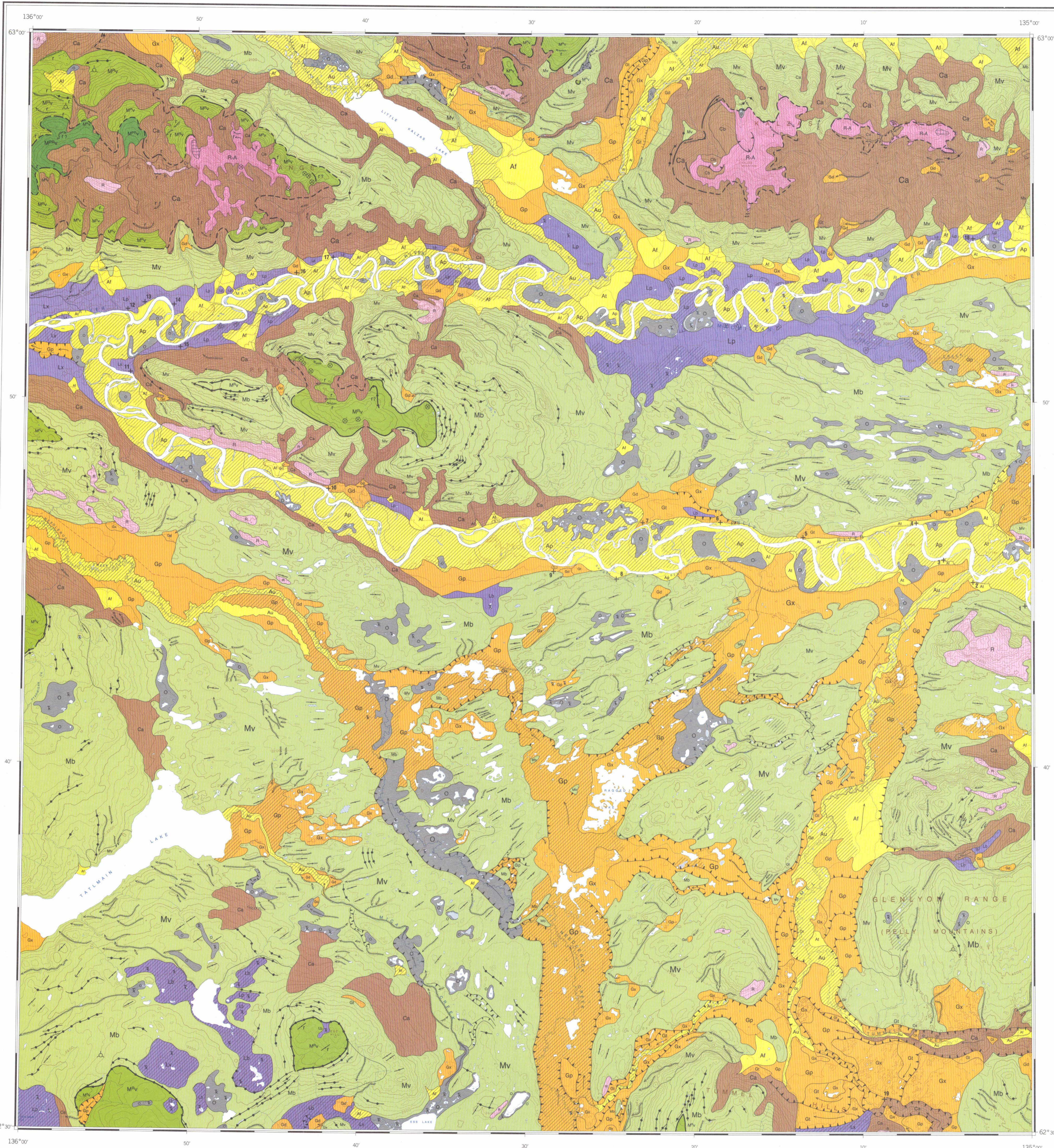
Geology by B.C. Ward and L.E. Jackson Jr., 1987-1989. Geological cartography by P. Corrigan, Geological Survey of Canada. Colour separations were produced using digital methods. Any revisions or additional geological information known to the user would be welcomed by the Geological Survey of Canada.

Base map assembled by the Geological Survey of Canada from maps 105 L/11, 12, 13, 14 (1970), published at 1:50 000 scale by the Surveys and Mapping Branch.

Copies of the topographical editions covering the map area may be obtained from the Canada Map Office, Department of Energy, Mines and Resources, Ottawa, Ontario, K1A 0E9.

Mean magnetic declination 1993, 29°54' E, decreasing 11.4" annually. Readings vary from 29°36' E in the SW corner to 30°12' E in the NE corner of the map.

Elevations in feet above mean sea level.



Copies of this map may be obtained from the Geological Survey of Canada, 601 Booth Street, Ottawa, Ontario K1A 0E8.



MAP 1786A SURFICIAL GEOLOGY NEEDLEROCK CREEK YUKON TERRITORY Scale 1:100 000 - Échelle 1/100 000. Includes a scale bar and projection information.

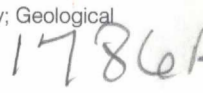
NATIONAL TOPOGRAPHIC SERIES REFERENCE AND INDEX TO GEOLOGICAL SURVEY OF CANADA MAPS. A grid table with map numbers and coordinates.

MAP LIBRARY / CARTOTHÈQUE

ESIC CIST APR 25 2002. Bibliothèque des sciences de la Terre.

LEGEND. This legend is common to maps 1786A to 1789A. COLOURED legend blocks indicate map units that appear on this map. QUATERNARY HOLOCENE - POST MCCONNELL GLACIATION: ORGANIC DEPOSITS, EOLIAN DEPOSITS, COLLUVIAL DEPOSITS, COLLUVIAL BLANKET SEDIMENTS, COLLUVIAL VENEER SEDIMENTS, COLLUVIAL APRON SEDIMENTS, ROCKFALL DEPOSITS, ALLUVIAL DEPOSITS, FLOODPLAIN SEDIMENTS, ALLUVIAL TERRACE SEDIMENTS, ALLUVIAL FAN SEDIMENTS, ALLUVIAL SEDIMENTS, UNDIVIDED. WISCONSINIAN - MCCONNELL GLACIATION: GLACIOLACUSTRINE DEPOSITS, GLACIOLACUSTRINE PLAIN, BLANKET, VENEER, COMPLEX, GLACIOFLUVIAL DEPOSITS, GLACIOFLUVIAL PLAIN AND FAN SEDIMENTS, GLACIOFLUVIAL TERRACE SEDIMENTS, GLACIOFLUVIAL DELTA, GLACIOFLUVIAL COMPLEX, MORAINAL DEPOSITS, TILL BLANKET, TILL VENEER. MIDDLE PLEISTOCENE - REID GLACIATION: GLACIOFLUVIAL SEDIMENTS, MORAINAL DEPOSITS. EARLY PLEISTOCENE - PRE-REID GLACIATION: MORAINAL DEPOSITS. PALEOZOIC TO TERTIARY: BEDROCK. Includes symbols for geological boundaries, cirques, streamlined glacial bedforms, moraines, glacial limits, and various glacial features.

Recommended citation: Ward, B.C., and Jackson, L.E., Jr. 1993. Surficial geology, Needlerock Creek, Yukon Territory. Geological Survey of Canada, Map 1786A, scale 1:100 000.



NOT TO BE TAKEN FROM LIBRARY / NE PAS SORTIR DE LA BIBLIOTHÈQUE

1786A