

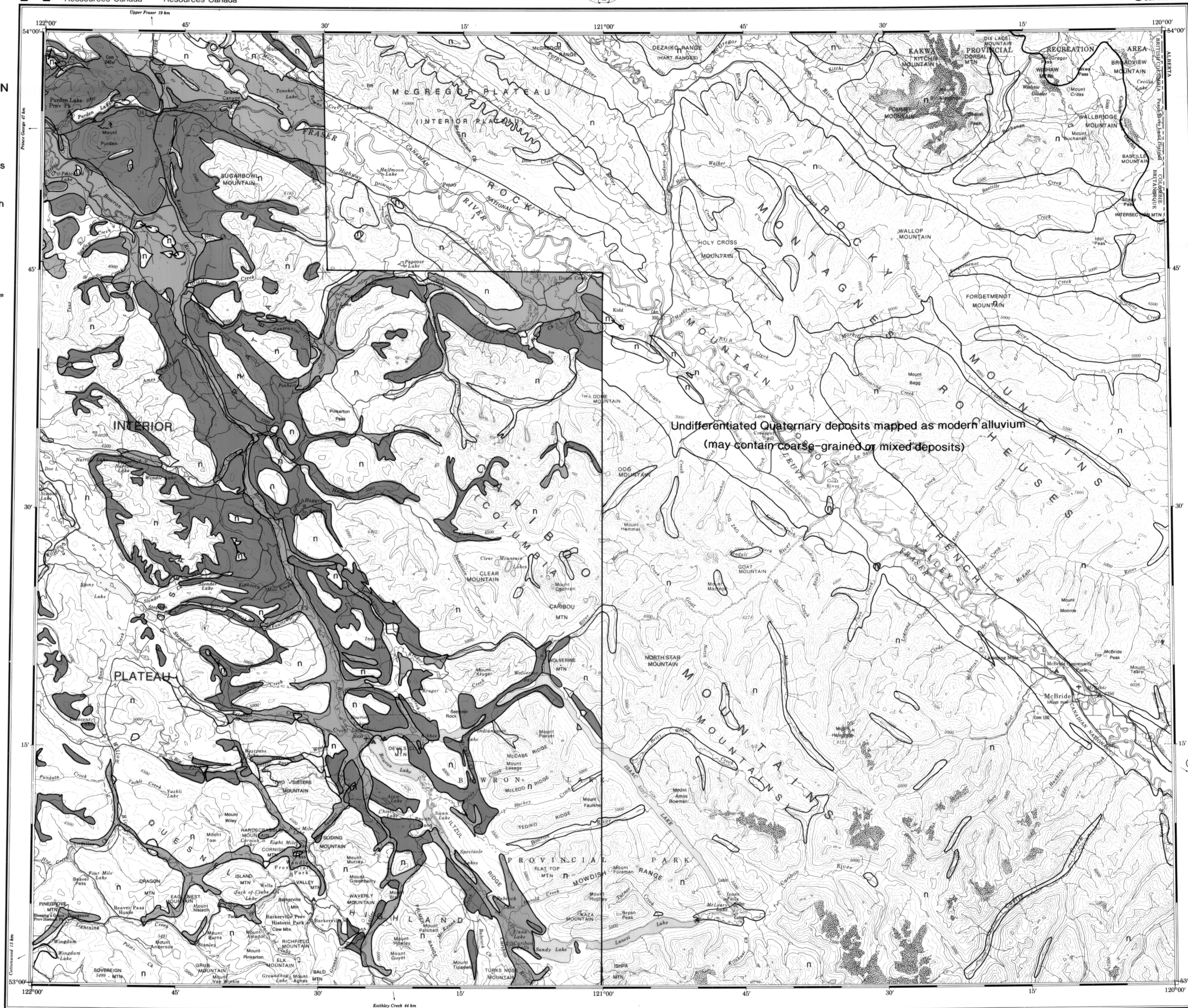
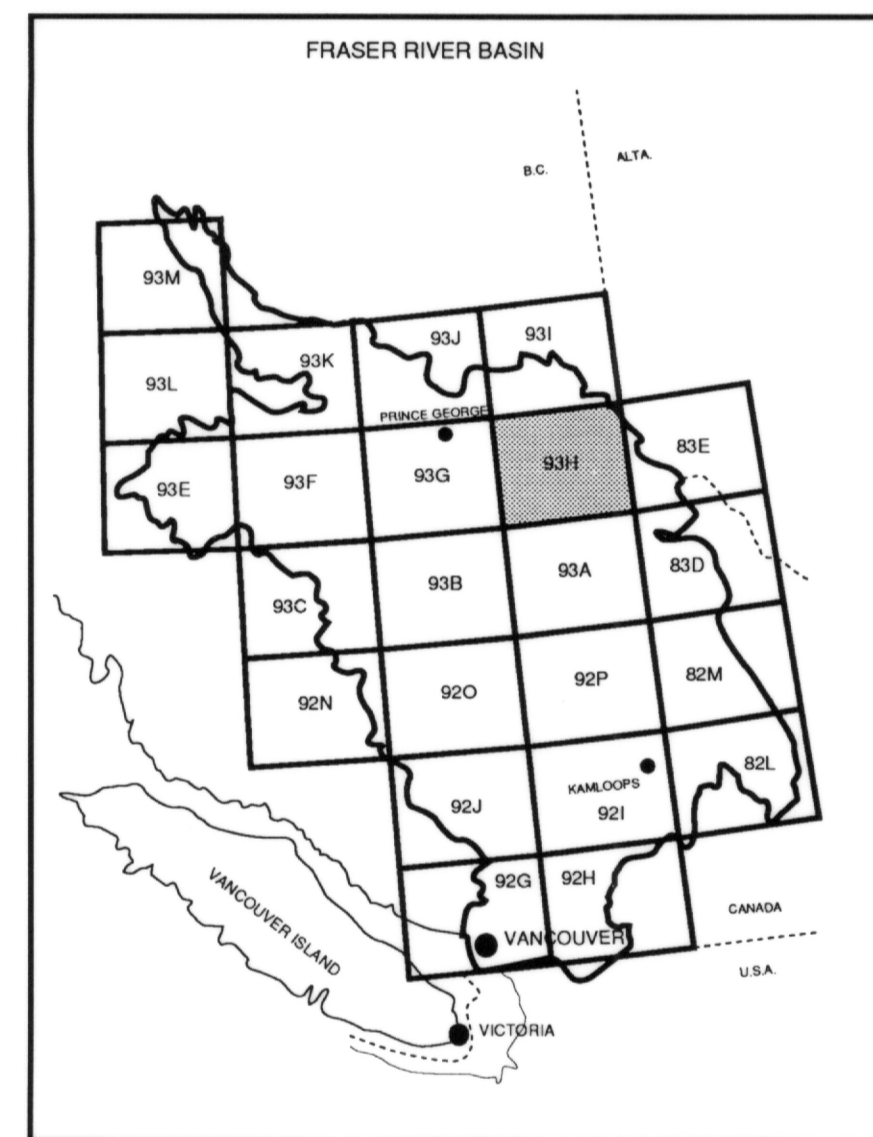
UNCONFINED AQUIFERS, FRASER RIVER BASIN

B.D. Ricketts and L.E. Jackson, Project Co-Ordinators

Aquifer compilation by D.R. Halliwell and S.Vanderburgh

This project is funded by the Fraser River Basin "Green Plan"

INSET

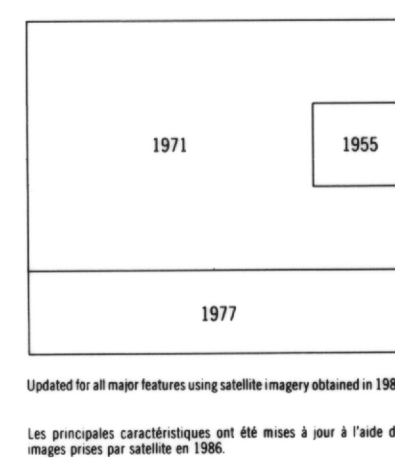


LEGEND

- Modern alluvium; including floodplain, channel, fan, delta and shoreline deposits.
- Extensive coarse-grained deposits; including outwash plains and fans, kame and esker complexes, fluvial terraces and delta terraces. [Significance as aquifer or recharge area is thickness dependent]
- Mixed deposits; including glaciolacustrine shoreline, ice-contact deposits. Interbedded or juxtaposed, coarse- and fine-grained deposits of mixed permeability.
- Outline of Fraser River Basin
- Non-aquifer: bedrock, till, unclassified

REFERENCES

- Campbell, R.B., Mountjoy, E.W., and Young, F.G. 1973: Geology of the McNoe Map Area, British Columbia. Geological Survey of Canada, Paper 72-35. 104p.
- Hardie, H.J., Green, A.J., and Lord, T.M. 1970: Soils of the Upper Part of the Fraser Valley in the Rocky Mountain Trench of British Columbia. Agriculture Canada Report No. 10 of the British Columbia Soil Survey. 55p.
- Lord, T.M. and Green, A.J. 1985: Soils of the Barkerville Area, British Columbia. Agriculture Canada Report No. 40 of the British Columbia Soil Survey. 79p.



PRODUCED BY THE CANADA CENTRE FOR MAPPING, DEPARTMENT OF ENERGY, MINES AND RESOURCES. DERIVED FROM 1:50 000 MAPS. INFORMATION CURRENT AS SHOWN IN DIAGRAM PUBLISHED IN 1990.

COPIES MAY BE OBTAINED FROM THE CANADA MAP OFFICE, DEPARTMENT OF ENERGY, MINES AND RESOURCES, OTTAWA, OR YOUR NEAREST MAP DEALER.

© 1990, HER MAJESTY THE QUEEN IN RIGHT OF CANADA, DEPARTMENT OF ENERGY, MINES AND RESOURCES.

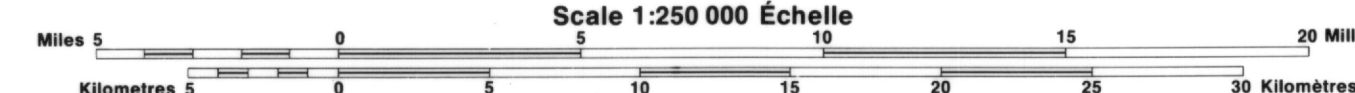
Roads	Routes	Other
hard surface	moderately dur	double chaussee
hard surface	moderately dur	double chaussee
loose or stabilized surface, all weather	de gravier, aggloméré, toulle salin	2 voies
loose surface, dry weather	de gravier, temps sec	2 voies ou plus
cart track	de terre	moins de 2 voies
trail, cut line or portage	sentier, percée ou portage	moins de 2 voies

Updated for all major features using satellite imagery obtained in 1986.
 Les principaux caractéristiques ont été mises à jour à l'aide des images par satellite en 1986.

Information concerning beach marks and horizontal control measurements can be obtained from Geodetic Survey, Canada Centre for Surveying, Ottawa.

McBRIDE
 BRITISH COLUMBIA COLOMBIE-BRITANNIQUE

Scale 1:250 000 Échelle



Magnetic declination 1989 varies from 22°46' westerly at the west edge to 22°19' westerly at the east edge. Mean annual change decreasing 18.7'.

En 1989, la déclinaison magnétique varie de 22°46' vers l'ouest au centre de l'ouest jusqu'à 22°19' vers l'ouest au centre de l'est. La variation annuelle moyenne décroît de 18,7'.

Pour les renseignements concernant les systèmes de levé et les bornes géodésiques, prière de s'adresser à la Division des levés géodésiques, Centre canadien des levés, Ottawa.

ÉTABLI PAR LE CENTRE CANADIEN DE CARTOGRAPHIE, MINISTÈRE DE L'ÉNERGIE, DES MINES ET DES RESSOURCES. TITRE DE CARTES À 1:50 000. RENSEIGNEMENTS À CÔTÉ TELS QU'INDIQUÉS DANS LE DIAGRAMME PUBLIÉ EN 1990.

LES CARTES SONT EN VENTE AU BUREAU DES CARTES DU CANADA, MINISTÈRE DE L'ÉNERGIE, DES MINES ET DES RESSOURCES, OTTAWA, OU CHEZ LE Vendeur LE PLUS PRÈS.

© 1990 SA MAJESTÉ LA REINE DU CANADA, MINISTÈRE DE L'ÉNERGIE, DES MINES ET DES RESSOURCES.

CONVERSION SCALE FOR ELEVATIONS	ÉCHELLE DE CONVERSION DES ALTITUDES
Mètres 30 20 10 0	100 200 300 400 500 600 700 800 900 1000 Pieds
Feet 100 50 0	

