

Figure 10.  
Single-channel seismic reflection line PZ78-16 and corresponding gravity (solid) and magnetic (dashed) profile data.

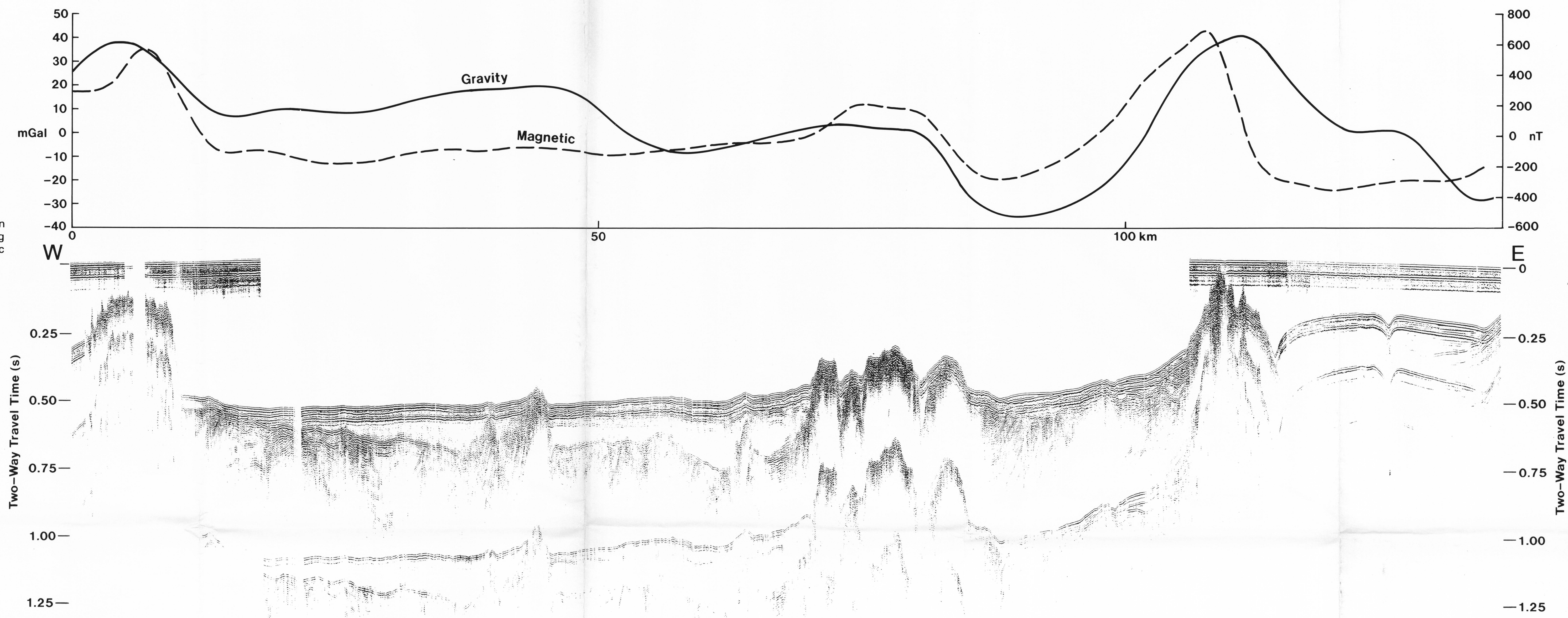


Figure 11.  
Tertiary basins in Dixon Entrance as interpreted from surveys of single-channel seismic reflection data. Line tracks are displayed as dotted lines. Line PZ78-16 is indicated by arrow. This map is at a scale of 1:250,000 and overlays a published map of the physiography of Dixon Entrance (Sawyer, 1989).

