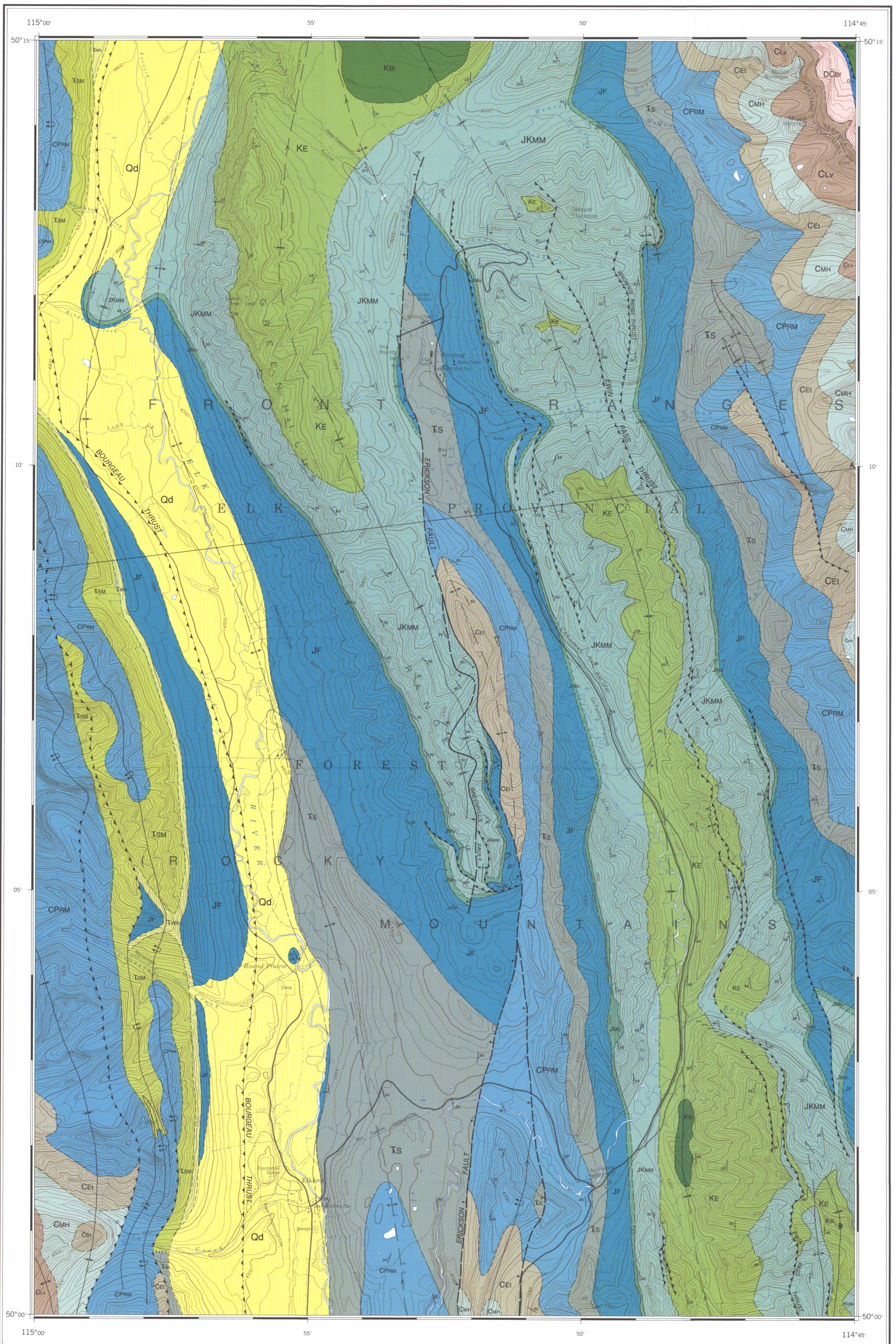
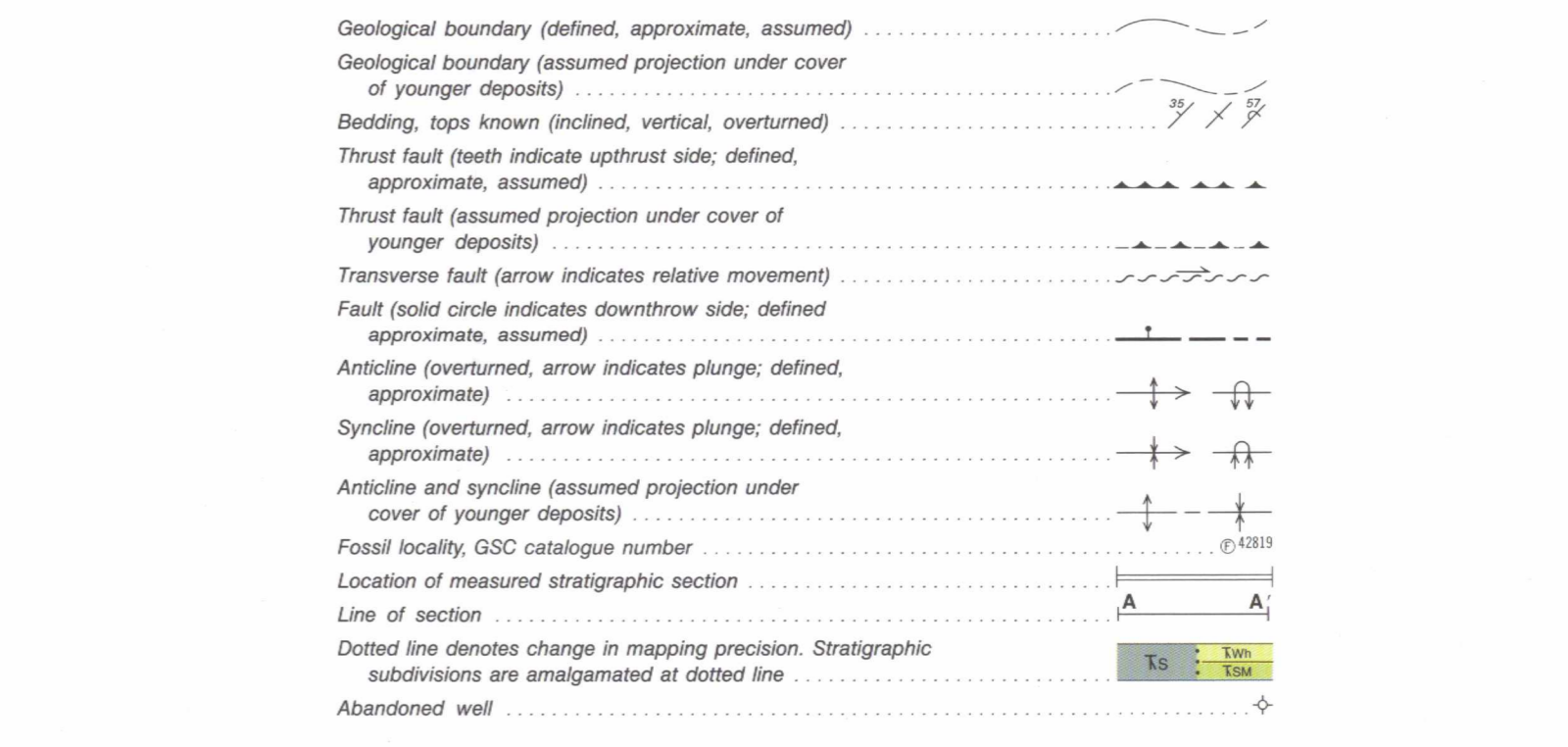


Structure cross-section along A-A'

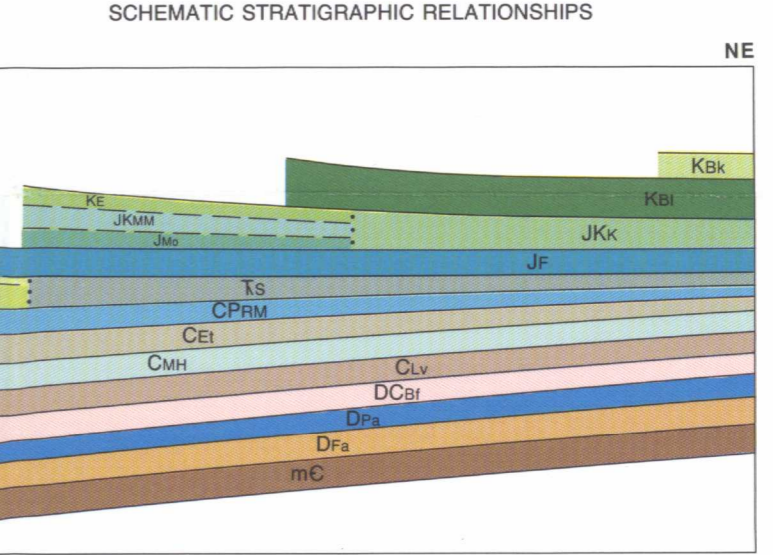
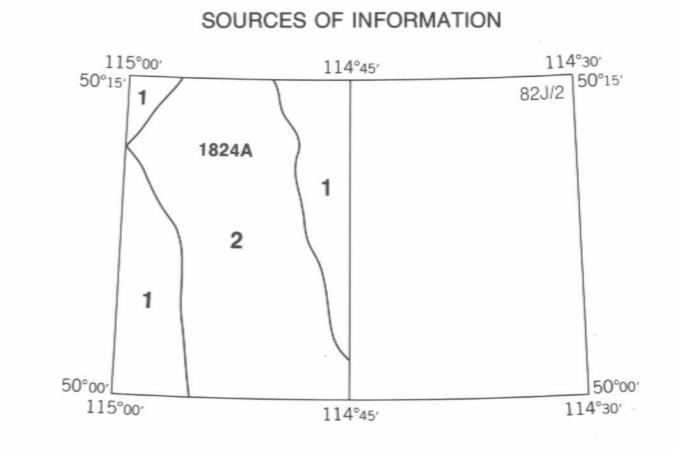


LEGEND
This legend is common to maps 1823A, 1824A. Coloured legend blocks indicate map units that appear on this map.

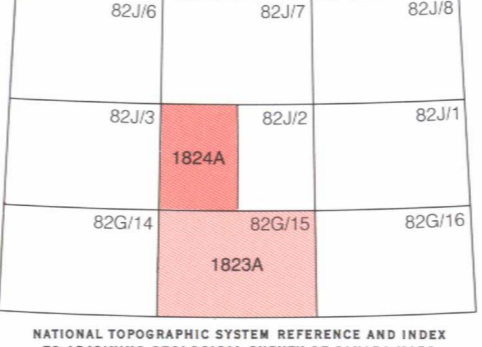
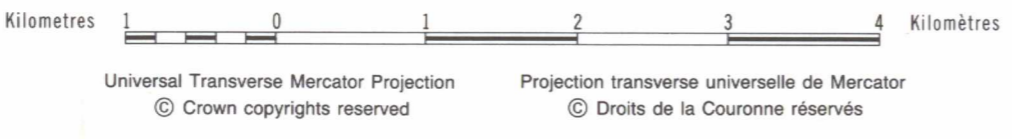
QUATERNARY	Qd Till, gravel, sand, silt, and alluvium
CRETACEOUS	
UPPER CRETACEOUS	
KBR BELLY RIVER FORMATION: grey and green mudstone, shale, and crossbedded sandstone (nonmarine)	
KWp WAPIABI FORMATION: dark grey shale, silty shale, and fine grained sandstone (marine)	
KCa CARDIUM FORMATION: dark grey sandstone and silty shale (marine)	
Kbk BLACKSTONE FORMATION: dark grey shale, silty shale, and fine grained sandstone (marine). Structure section only	
LOWER CRETACEOUS	
KC CROWSNEST FORMATION: light grey, alkalic volcanic sandstone, mudstone, and conglomerate (nonmarine)	
Kbi BLAIRMORE GROUP: grey and greenish grey mudstone and sandstone; green and maroon, silty mudstone, conglomerate (nonmarine)	
KE KOOTENAY GROUP (JMo - KE) ELK FORMATION: grey, lithic sandstone, siltstone, and silty mudstone; humic and sapropelic coal; rare conglomerate (nonmarine)	
JURASSIC AND CRETACEOUS	
UPPER JURASSIC AND LOWER CRETACEOUS	
JKMM MIST MOUNTAIN FORMATION: dark grey siltstone and mudstone; grey, lithic sandstone; black, carbonaceous shale; humic coal; rare conglomerate (nonmarine)	JKK KOOTENAY GROUP: undivided (structure section only)
JMo MORRISSEY FORMATION: light grey sandstone, locally conglomeratic; carbonaceous shale, coal (nonmarine)	
JF FERNIE FORMATION: dark grey and black shale; grey siltstone and sandstone; limestone; phosphite (nonmarine)	
TRIASSIC	
TWh WHITEHORSE FORMATION: calcareous and dolomitic sandstone and siltstone; minor sandy, quartzose dolomite; limestone; solution collapse breccia (marine)	TS SPRAY RIVER GROUP: undivided; dark grey, silty shale; dolomitic or sideritic, argillaceous limestone
TSM SULPHUR MOUNTAIN FORMATION: calcareous and dolomitic siltstone and sandstone; silty limestone and dolomite; shale (marine)	
CARBONIFEROUS AND PERMIAN	
UPPER CARBONIFEROUS AND PERMIAN	
CPRM ROCKY MOUNTAIN SUPERGROUP: light grey, quartzitic, dolomitic and calcareous sandstone; dark grey sandstone; silty dolomite; cherty dolomite; chert (marine)	
CMH ISHBEL GROUP and SPRAY LAKES GROUP (structure sections only)	
LOWER CARBONIFEROUS	
CEi ETHERINGTON FORMATION: light grey limestone, cherty limestone, and calcarenite limestone; dolomite; cherty dolomite; green and red shale; siltstone (marine)	
CMH-u MOUNT HEAD FORMATION (CMH-i - CMH-u) Carnarvon Member: dark grey and black, dense limestone Marston Member: light grey to black, silty dolomite and limestone Opal Member: grey and dark grey, skeletal and oolitic limestone; minor micritic limestone and dolomite; chert (marine)	CMH LOWER CARBONIFEROUS MOUNT HEAD FORMATION: undivided; black and grey limestone and dolomite; chert
CMH-l Loomis Member: grey limestone and calcarenite limestone Salter Member: light grey, sandy and silty dolomite (marine)	
CLv LIVINGSTONE FORMATION: light grey, skeletal calcarenite and calcarenite limestone; cherty limestone; dolomite (marine)	
DEVONIAN AND CARBONIFEROUS	
DCBI EXSHAW and BANFF formations: black shale and silty limestone (Exshaw); dark grey, cherty, argillaceous limestone; black chert; calcarenite limestone; minor black shale (marine)	
DEVONIAN	
UPPER DEVONIAN	
DPa PALLISER FORMATION: dark grey, finely crystalline limestone and dolomitic limestone (marine)	
DF FAIRHOLME GROUP (structure section only)	
CAMBRIAN	
MIDDLE CAMBRIAN	
mC Undivided (structure section only)	



Geology by R.A. Price, D.A. Grievé, and C. Patenaude 1961, 1962



MAP 1824A
GEOLOGY
FORDING RIVER
(West Half)
WEST OF FIFTH MERIDIAN
BRITISH COLUMBIA-ALBERTA
Scale 1:50 000 - Échelle 1:50 000



Copies of this map may be obtained from the Geological Survey of Canada, 601 Booth Street, Ottawa, Ontario K1A 0E8. 3303 33rd Street, N.W., Calgary, Alberta T2L 3A7. 100 West Pender Street, Vancouver, B.C. V6B 1R8.

Published 1992

Geological cartography by D.A. Lemay, Institute of Sedimentary and Petroleum Geology, Geological Survey of Canada

Any revisions or additional geological information known to the user would be welcomed by the Geological Survey of Canada

Base map at the same scale published by the Surveys and Mapping Branch in 1980

Copies of the topographical edition of this map may be obtained from the Canada Map Office, Department of Energy, Mines and Resources, Ottawa, Ontario, K1A 0E9

Approximate magnetic declination 1991, 18°55' East, decreasing 6.9' annually

Elevations in feet above mean sea level

NOT TO BE TAKEN FROM LIBRARY / NOT TO BE TAKEN FROM LIBRARY

Recommended citation: Price, R.A., Grievé, D.A., and Patenaude, C., 1992: Geology and structure cross-section, Fording River (West Half), British Columbia-Alberta; Geological Survey of Canada, Map 1824A, scale 1:50 000

1824A