

DESCRIPTIVE NOTES

Previous work
The previous map of metamorphic grade of basement rocks of northern Melville Peninsula (Heywood et al., 1978) shows that the region is underlain by an isolated and the northeast where greenschist grade rocks occur. Subsequent mapping in both these areas has confirmed the published pattern of higher and lower grade (Schau and Ashton, 1988; Schau and Becker, 1988; Schau and Diger, 1989; Schau, in press). The amphibolite grade rocks which is marked on the previous map (Mazurski, 1982; Henderson, 1988) is confirmed by metamorphic studies (Mazurski, 1982; Henderson, 1988). Amphibolite grade rocks are weakly underplated over the greenschist grade rocks (Schau and Becker, 1988). Paleozoic carbonates have been mapped, about a third of the area has not been covered in a systematic manner. Parts of the area has not been covered in a systematic manner, suggesting that these areas need more detailed petrological investigations.

Brief Metamorphic History
Northern Melville Peninsula consists of a basement gneiss host bordered by the Foxe Basin Lovénian carbonates. The main amphibolite grade basement gneisses contain evidence of a long and complex history. Two supracrustal groups metamorphic.
There are two metamorphic discontinuities in the region. One is a tectonic contact between the base of the granulite-gneissite terrain of the northwest (the northwest domain) and the main amphibolite grade rocks in the northeast (the northeast domain). The other is a tectonic contact between the base of the granulite-gneissite terrain of the northwest (the northwest domain) and the main amphibolite grade rocks in the northeast (the northeast domain). The other is a tectonic contact between the base of the granulite-gneissite terrain of the northwest (the northwest domain) and the main amphibolite grade rocks in the northeast (the northeast domain).

Examples of compilation techniques
Preparation of the Metamorphic Map of North America requires cooperation with many diverse compilation strategies (Brodie et al., 1992). A digital data base for the northern Melville Peninsula was compiled using a digital data base for the northern Melville Peninsula. A digital data base for the northern Melville Peninsula was compiled using a digital data base for the northern Melville Peninsula. A digital data base for the northern Melville Peninsula was compiled using a digital data base for the northern Melville Peninsula.

Metamorphic petrology by T. Fritsch, 1982; J.A. Fraser et al., 1978; J.R. Henderson, 1988; M.A. Mazurski, 1982; M. Schau, in press, 1992; M. Schau and K. Ashton, 1988; M. Schau and M. Becker, 1988; M. Schau and M. Diger, 1989; K. Venance, 1992, 1993
Geology by R. Blackadar, 1963; T.E. Bolton et al., 1977; P. Chernes et al., 1978; W.F. Fahrig and D. Jones, 1985; W.W. Heywood, 1966, 1987, 1974; M.A. Mazurski, 1982; M. Schau, 1981; M. Schau and W.W. Heywood, 1984; M. Schau and M. Diger, 1989; H.P. Trivett, 1975

SELECTION BIBLIOGRAPHY AND REFERENCES
Blackadar, R.G., 1963: Additional notes to accompany Map 3-1958 (Fury and Hecla Strait map-area) and Map 4-1958 (Fox Basin North map-area). Geological Survey of Canada, Paper 62-35, 24 p.
Bolton, T.E., Brodric, B., Berman, R., Schau, M., 1977: A digital technique for metamorphic map compilation: Abstracts with Programs, Geological Society of America, vol. 24, p. A292.
Davidson, A., Carmichael, D.M., and Pattison, D.R.M., 1990: Metamorphism and geochronology of the southeastern Grenville Province, U.S.P. Project 235-304. Field Trip #1 Guidebook.
Fraser, J.A., Heywood, W.W., and Mazurski, M.A., 1978: Metamorphic Map of the Canadian Shield, Geological Survey of Canada, Map 1475A, at a scale of 1:3,500,000.
Fritsch, T., 1982: Precambrian geology of the Prince Albert Hills, western Melville Peninsula, Northwest Territories. Geological Survey of Canada, Bulletin 346, 70 p.
Fritsch, T. and Jenner, G.A., 1975: Metamorphosed Ultramafic Lavas of the Prince Albert Group volcanics, western Melville Peninsula, N.W.T., Canada. Abstracts with Programs, Geological Association of America, vol. 7, no. 6, p. 758.
Fryer, B.J. and Jenner, G.A., 1978: Geochemistry and origin of the Archaean Prince Albert Group Volcanics, western Melville Peninsula, Northwest Territories, Canada. Geochimica et Cosmochimica Acta, v. 42, p. 1645-1654.
Henderson, J.R., 1988: Structure and metamorphism of the Archaean Peninsular Group and its Franklinian basement complex in the Lyell Inlet Area, Melville Peninsula, District of Franklin, Geological Survey of Canada Bulletin 324, 50p.
1984: Description of a vein in the Foxe Fold Belt, Melville Peninsula, (editors), E. Schweizerbart'sche Verlagsbuchhandlung (Wagner & Debes) Stuttgart, Germany, p.201-201.
1988: Northwest Territories, Geological Survey of Canada, Map 1655A, 1:100,000 (sheet).
Heywood, W.W., 1966: Geological notes on Operation Wager, N.W.T., Geological Survey of Canada, Paper 66-10.
1967: Geological notes, northeastern District of Keewatin and Southern Melville Peninsula, District of Franklin (parts of 46, 47, 56, 57); Geological Survey of Canada, Paper 66-40.
1974: Geological reconnaissance of northern Melville Peninsula, District of Franklin, in Report of Activities, Part A, April to October, 1973, Geological Survey of Canada, Paper 74-1A, p. 381.

Heywood, W.W. and Fraser, J.A., 1978: Metamorphism in the Canadian Shield, Geological Survey of Canada, Paper 78-10, 367p.
Heywood, W.W. and Schau, M., 1978: A subdivision of the northern Churchill Structural Province, in Current Research, Part A, Geological Survey of Canada, Paper 78-1A, p. 139-142.
Jackson, G.D. and Taylor, F.C., 1972: Correlation of major Aegirium rock units in the northeastern Canadian Shield, Canadian Journal of Earth Sciences, v. 9, p. 1650-1669.
Mazurski, M.A., 1980: Geology and estimates of P-T-X conditions of metamorphism of part of the Foxe Fold Belt (N.T.S. 4702) Melville Peninsula, Northwest Territories, unpublished MSc Thesis, Queen's University, Kingston, Ontario.
Schau, M., 1978: Metamorphism of the Prince Albert Group, District of Keewatin, in Heywood, W.W. and Fraser, J.A. (eds.), Metamorphism in the Canadian Shield, Geological Survey of Canada, Paper 78-10, p. 203-213.
1988: A survey of granulites, Geological Association of Canada Volume with Abstracts, vol. 11.
In press: Geology of the Prince Archaean Group in the Richards Bay area, northeastern Melville Peninsula, District of Franklin, Geological Survey of Canada, Bulletin 346.
In press: Geology of Richards Bay Region, northeastern Melville Peninsula, District of Franklin, Geological Survey of Canada, Map 1657A (scale 1:50,000).
In press: Geological Bedrock Map, 1:500,000 Northern Melville Peninsula (N.T.S. 47 A, B, C, D); Geological Survey of Canada, Open File 2594.
Schau, M. and Ashton, K.E., 1985: High-Grade Metamorphic Rocks of northern Melville Peninsula, District of Franklin, in Current Research, Part A, Geological Survey of Canada, Paper 85-1A, p. 527-530.
1988: The Archaean Prince Albert Group, Northeastern Canada: Evidence for a Crustal Extension with a >2.9 Ga Continent, in GSA Abstracts with Programs 1988, p. 450.
Schau, M. and Becker, M., 1988: High grade metamorphic rocks of northern Melville Peninsula, District of Franklin, Part A, Geological Survey of Canada, Paper 88-1A, p. 667-674.
Schau, M. and Diger, M., 1989: Geology in High Grade Geotopes from the Black Inlet Area, west coast of Melville Peninsula, District of Franklin, N.W.T., in Current Research, Part A, Geological Survey of Canada, Paper 89-1C, p. 395-403.
Schau, M. and Heywood, W.W., 1984: Geology of northern Melville Peninsula; Geological Survey of Canada, Open File 1046.
Schau, M., Brodric, B., and Berman, R., 1989: A database design for a metamorphic map compilation, with an example from Northern Melville Peninsula, N.W.T., Canada. Abstracts with Programs, Geological Society of America, vol. 23, p. A449.
Schau, M., Venance, K., Berman, R., and Brodric, B., 1992: Metamorphic Map Pilot Study: Empirical tectono-metamorphic domains, Abstracts with Programs, Geological Society of America, vol. 24, p. A291.
Sinha, K., Krishna, Fisher, G.W. and Trzcinski, W.E., 1992: Petro-metamorphic map of the North American Craton; Abstract with Programs, Geological Society of America, vol. 24, A292.

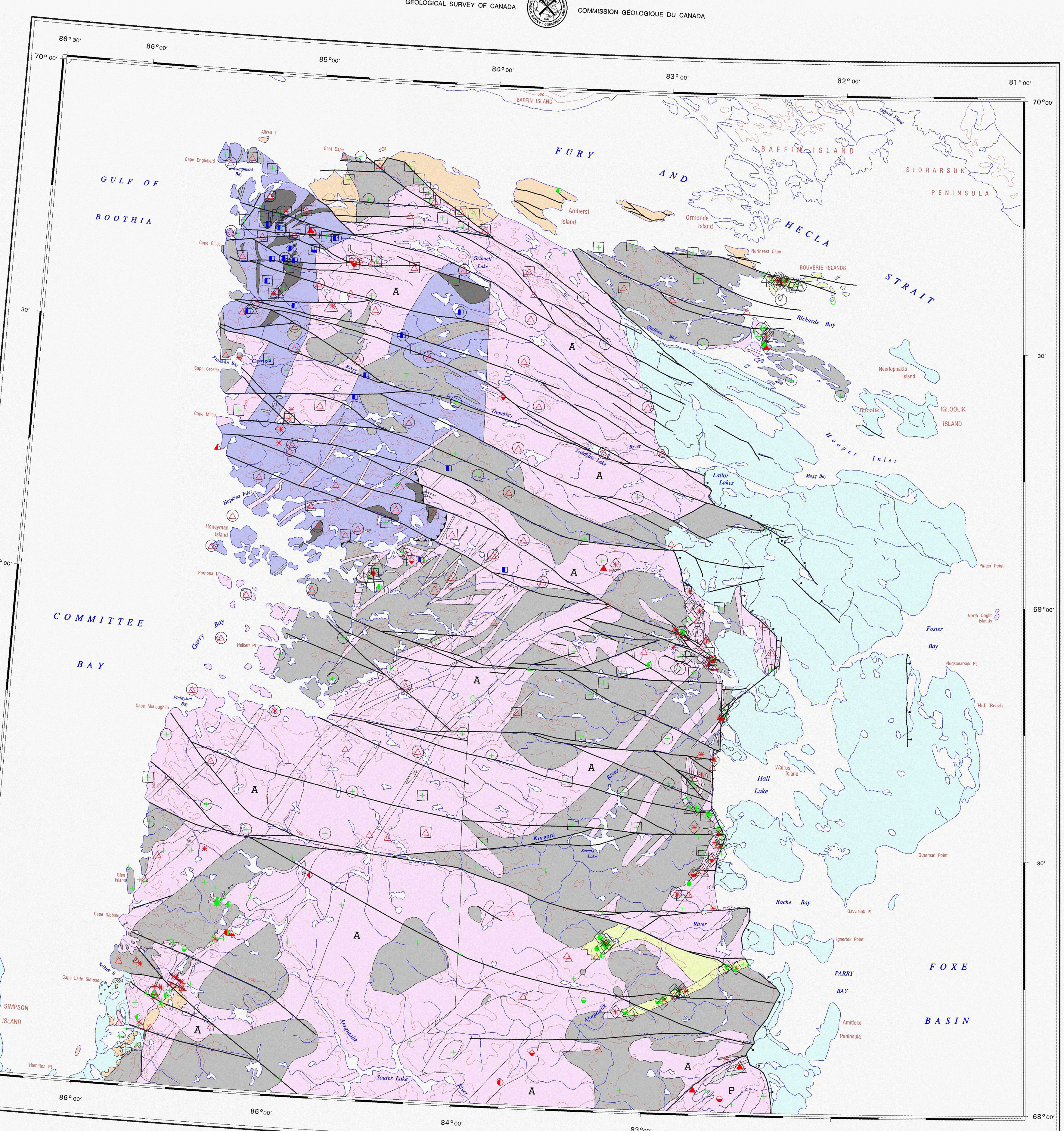
Metamorphic petrology by T. Fritsch, 1982; J.A. Fraser et al., 1978; J.R. Henderson, 1988; M.A. Mazurski, 1982; M. Schau, in press, 1992; M. Schau and K. Ashton, 1988; M. Schau and M. Becker, 1988; M. Schau and M. Diger, 1989; K. Venance, 1992, 1993
Geology by R. Blackadar, 1963; T.E. Bolton et al., 1977; P. Chernes et al., 1978; W.F. Fahrig and D. Jones, 1985; W.W. Heywood, 1966, 1987, 1974; M.A. Mazurski, 1982; M. Schau, 1981; M. Schau and W.W. Heywood, 1984; M. Schau and M. Diger, 1989; H.P. Trivett, 1975

SELECTION BIBLIOGRAPHY AND REFERENCES
Blackadar, R.G., 1963: Additional notes to accompany Map 3-1958 (Fury and Hecla Strait map-area) and Map 4-1958 (Fox Basin North map-area). Geological Survey of Canada, Paper 62-35, 24 p.
Bolton, T.E., Brodric, B., Berman, R., Schau, M., 1977: A digital technique for metamorphic map compilation: Abstracts with Programs, Geological Society of America, vol. 24, p. A292.
Davidson, A., Carmichael, D.M., and Pattison, D.R.M., 1990: Metamorphism and geochronology of the southeastern Grenville Province, U.S.P. Project 235-304. Field Trip #1 Guidebook.
Fraser, J.A., Heywood, W.W., and Mazurski, M.A., 1978: Metamorphic Map of the Canadian Shield, Geological Survey of Canada, Map 1475A, at a scale of 1:3,500,000.
Fritsch, T., 1982: Precambrian geology of the Prince Albert Hills, western Melville Peninsula, Northwest Territories. Geological Survey of Canada, Bulletin 346, 70 p.
Fritsch, T. and Jenner, G.A., 1975: Metamorphosed Ultramafic Lavas of the Prince Albert Group volcanics, western Melville Peninsula, N.W.T., Canada. Abstracts with Programs, Geological Association of America, vol. 7, no. 6, p. 758.
Fryer, B.J. and Jenner, G.A., 1978: Geochemistry and origin of the Archaean Prince Albert Group Volcanics, western Melville Peninsula, Northwest Territories, Canada. Geochimica et Cosmochimica Acta, v. 42, p. 1645-1654.
Henderson, J.R., 1988: Structure and metamorphism of the Archaean Peninsular Group and its Franklinian basement complex in the Lyell Inlet Area, Melville Peninsula, District of Franklin, Geological Survey of Canada Bulletin 324, 50p.
1984: Description of a vein in the Foxe Fold Belt, Melville Peninsula, (editors), E. Schweizerbart'sche Verlagsbuchhandlung (Wagner & Debes) Stuttgart, Germany, p.201-201.
1988: Northwest Territories, Geological Survey of Canada, Map 1655A, 1:100,000 (sheet).
Heywood, W.W., 1966: Geological notes on Operation Wager, N.W.T., Geological Survey of Canada, Paper 66-10.
1967: Geological notes, northeastern District of Keewatin and Southern Melville Peninsula, District of Franklin (parts of 46, 47, 56, 57); Geological Survey of Canada, Paper 66-40.
1974: Geological reconnaissance of northern Melville Peninsula, District of Franklin, in Report of Activities, Part A, April to October, 1973, Geological Survey of Canada, Paper 74-1A, p. 381.

SELECTION BIBLIOGRAPHY AND REFERENCES
Blackadar, R.G., 1963: Additional notes to accompany Map 3-1958 (Fury and Hecla Strait map-area) and Map 4-1958 (Fox Basin North map-area). Geological Survey of Canada, Paper 62-35, 24 p.
Bolton, T.E., Brodric, B., Berman, R., Schau, M., 1977: A digital technique for metamorphic map compilation: Abstracts with Programs, Geological Society of America, vol. 24, p. A292.
Davidson, A., Carmichael, D.M., and Pattison, D.R.M., 1990: Metamorphism and geochronology of the southeastern Grenville Province, U.S.P. Project 235-304. Field Trip #1 Guidebook.
Fraser, J.A., Heywood, W.W., and Mazurski, M.A., 1978: Metamorphic Map of the Canadian Shield, Geological Survey of Canada, Map 1475A, at a scale of 1:3,500,000.
Fritsch, T., 1982: Precambrian geology of the Prince Albert Hills, western Melville Peninsula, Northwest Territories. Geological Survey of Canada, Bulletin 346, 70 p.
Fritsch, T. and Jenner, G.A., 1975: Metamorphosed Ultramafic Lavas of the Prince Albert Group volcanics, western Melville Peninsula, N.W.T., Canada. Abstracts with Programs, Geological Association of America, vol. 7, no. 6, p. 758.
Fryer, B.J. and Jenner, G.A., 1978: Geochemistry and origin of the Archaean Prince Albert Group Volcanics, western Melville Peninsula, Northwest Territories, Canada. Geochimica et Cosmochimica Acta, v. 42, p. 1645-1654.
Henderson, J.R., 1988: Structure and metamorphism of the Archaean Peninsular Group and its Franklinian basement complex in the Lyell Inlet Area, Melville Peninsula, District of Franklin, Geological Survey of Canada Bulletin 324, 50p.
1984: Description of a vein in the Foxe Fold Belt, Melville Peninsula, (editors), E. Schweizerbart'sche Verlagsbuchhandlung (Wagner & Debes) Stuttgart, Germany, p.201-201.
1988: Northwest Territories, Geological Survey of Canada, Map 1655A, 1:100,000 (sheet).
Heywood, W.W., 1966: Geological notes on Operation Wager, N.W.T., Geological Survey of Canada, Paper 66-10.
1967: Geological notes, northeastern District of Keewatin and Southern Melville Peninsula, District of Franklin (parts of 46, 47, 56, 57); Geological Survey of Canada, Paper 66-40.
1974: Geological reconnaissance of northern Melville Peninsula, District of Franklin, in Report of Activities, Part A, April to October, 1973, Geological Survey of Canada, Paper 74-1A, p. 381.

SELECTION BIBLIOGRAPHY AND REFERENCES
Blackadar, R.G., 1963: Additional notes to accompany Map 3-1958 (Fury and Hecla Strait map-area) and Map 4-1958 (Fox Basin North map-area). Geological Survey of Canada, Paper 62-35, 24 p.
Bolton, T.E., Brodric, B., Berman, R., Schau, M., 1977: A digital technique for metamorphic map compilation: Abstracts with Programs, Geological Society of America, vol. 24, p. A292.
Davidson, A., Carmichael, D.M., and Pattison, D.R.M., 1990: Metamorphism and geochronology of the southeastern Grenville Province, U.S.P. Project 235-304. Field Trip #1 Guidebook.
Fraser, J.A., Heywood, W.W., and Mazurski, M.A., 1978: Metamorphic Map of the Canadian Shield, Geological Survey of Canada, Map 1475A, at a scale of 1:3,500,000.
Fritsch, T., 1982: Precambrian geology of the Prince Albert Hills, western Melville Peninsula, Northwest Territories. Geological Survey of Canada, Bulletin 346, 70 p.
Fritsch, T. and Jenner, G.A., 1975: Metamorphosed Ultramafic Lavas of the Prince Albert Group volcanics, western Melville Peninsula, N.W.T., Canada. Abstracts with Programs, Geological Association of America, vol. 7, no. 6, p. 758.
Fryer, B.J. and Jenner, G.A., 1978: Geochemistry and origin of the Archaean Prince Albert Group Volcanics, western Melville Peninsula, Northwest Territories, Canada. Geochimica et Cosmochimica Acta, v. 42, p. 1645-1654.
Henderson, J.R., 1988: Structure and metamorphism of the Archaean Peninsular Group and its Franklinian basement complex in the Lyell Inlet Area, Melville Peninsula, District of Franklin, Geological Survey of Canada Bulletin 324, 50p.
1984: Description of a vein in the Foxe Fold Belt, Melville Peninsula, (editors), E. Schweizerbart'sche Verlagsbuchhandlung (Wagner & Debes) Stuttgart, Germany, p.201-201.
1988: Northwest Territories, Geological Survey of Canada, Map 1655A, 1:100,000 (sheet).
Heywood, W.W., 1966: Geological notes on Operation Wager, N.W.T., Geological Survey of Canada, Paper 66-10.
1967: Geological notes, northeastern District of Keewatin and Southern Melville Peninsula, District of Franklin (parts of 46, 47, 56, 57); Geological Survey of Canada, Paper 66-40.
1974: Geological reconnaissance of northern Melville Peninsula, District of Franklin, in Report of Activities, Part A, April to October, 1973, Geological Survey of Canada, Paper 74-1A, p. 381.

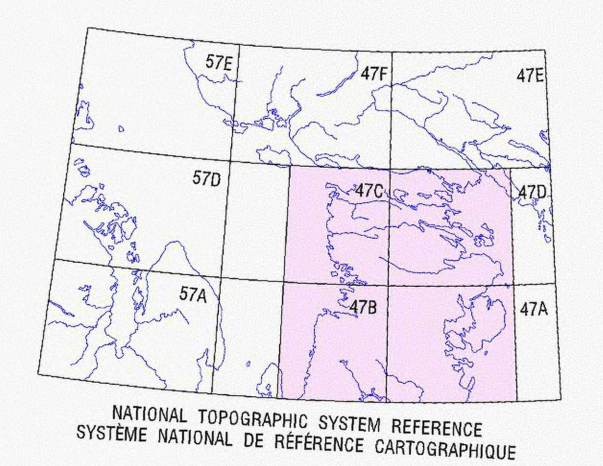
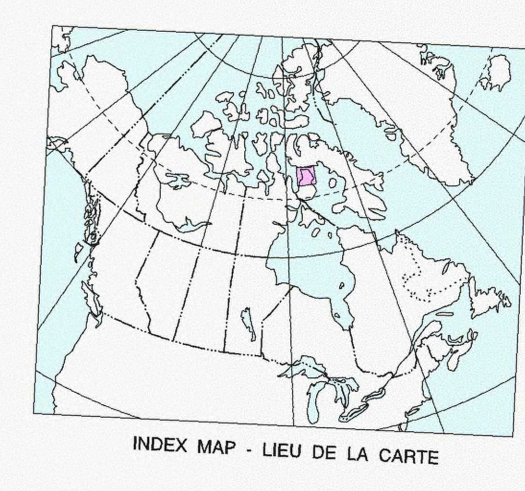
SELECTION BIBLIOGRAPHY AND REFERENCES
Blackadar, R.G., 1963: Additional notes to accompany Map 3-1958 (Fury and Hecla Strait map-area) and Map 4-1958 (Fox Basin North map-area). Geological Survey of Canada, Paper 62-35, 24 p.
Bolton, T.E., Brodric, B., Berman, R., Schau, M., 1977: A digital technique for metamorphic map compilation: Abstracts with Programs, Geological Society of America, vol. 24, p. A292.
Davidson, A., Carmichael, D.M., and Pattison, D.R.M., 1990: Metamorphism and geochronology of the southeastern Grenville Province, U.S.P. Project 235-304. Field Trip #1 Guidebook.
Fraser, J.A., Heywood, W.W., and Mazurski, M.A., 1978: Metamorphic Map of the Canadian Shield, Geological Survey of Canada, Map 1475A, at a scale of 1:3,500,000.
Fritsch, T., 1982: Precambrian geology of the Prince Albert Hills, western Melville Peninsula, Northwest Territories. Geological Survey of Canada, Bulletin 346, 70 p.
Fritsch, T. and Jenner, G.A., 1975: Metamorphosed Ultramafic Lavas of the Prince Albert Group volcanics, western Melville Peninsula, N.W.T., Canada. Abstracts with Programs, Geological Association of America, vol. 7, no. 6, p. 758.
Fryer, B.J. and Jenner, G.A., 1978: Geochemistry and origin of the Archaean Prince Albert Group Volcanics, western Melville Peninsula, Northwest Territories, Canada. Geochimica et Cosmochimica Acta, v. 42, p. 1645-1654.
Henderson, J.R., 1988: Structure and metamorphism of the Archaean Peninsular Group and its Franklinian basement complex in the Lyell Inlet Area, Melville Peninsula, District of Franklin, Geological Survey of Canada Bulletin 324, 50p.
1984: Description of a vein in the Foxe Fold Belt, Melville Peninsula, (editors), E. Schweizerbart'sche Verlagsbuchhandlung (Wagner & Debes) Stuttgart, Germany, p.201-201.
1988: Northwest Territories, Geological Survey of Canada, Map 1655A, 1:100,000 (sheet).
Heywood, W.W., 1966: Geological notes on Operation Wager, N.W.T., Geological Survey of Canada, Paper 66-10.
1967: Geological notes, northeastern District of Keewatin and Southern Melville Peninsula, District of Franklin (parts of 46, 47, 56, 57); Geological Survey of Canada, Paper 66-40.
1974: Geological reconnaissance of northern Melville Peninsula, District of Franklin, in Report of Activities, Part A, April to October, 1973, Geological Survey of Canada, Paper 74-1A, p. 381.



LEGEND

- Unmetamorphosed
- Anchimetamorphosed, reaching greenschist in SW corner
- Greenschist
- Br-Ch-Ms-Qz
- Gr-Bt-Ch-Ms-Qz
- Stp-Chl
- To-Ch-Cal
- Act-Ep-Ch-Mag/Plom
- Amphibolite (low to intermediate P)
 - P - Early Proterozoic metamorphism
 - A - Archaean metamorphism
- Hbl-Pi (Ep, Bt)
- Hbl-Pi-Qz (Ep, Bt)
- Lower:
 - Gr-Bt-Ms-Qz-Bt
 - St-Bt-Ms-Qz-Pi
 - Middle:
 - Di-Cal-Qtz
 - Cr-Bt-Ms-Qz-Pi
 - And-Ms-Bt-Qz-Pi
 - And-Sil-Bt-Qz-Pi
 - Sil-Ms-Bt-Qz-Pi
 - Upper:
 - Kfs-Sil-Qz-Bt-Pi
- Granulite
- Qpx-Cpx-Gr-Pi
- Qpx-Cpx-Pi-Qz
- Qpx-Pi-Kfs-Qz
- Qpx-Gr-Pi-Qz
- GREenschist OVERPRINT
- Strong
- Moderate
- Granitic rocks (Bt-Fsp-Qtz)
- PLUTONIC ROCKS
- Mid-Proterozoic
- Early to Mid-Proterozoic (syn to post metamorphism)
- Late Archaean (syn to post metamorphism)
- Archaean
- Geological contact
- Fault
- Normal fault (feet on hanging wall)
- Thrust fault (feet on hanging wall)
- QUARTZ TEXTURES
- Volcanic quartz
- Polyzoned quartz
- Sutured quartz
- Sutured quartz with undulatory extinction
- Quartz with undulatory extinction

OPEN FILE / DOSSIER PUBLIC 2595
METAMORPHIC MAP
NORTHERN MELVILLE PENINSULA
DISTRICT OF FRANKLIN
NORTHWEST TERRITORIES
Scale 1:500 000 - Échelle 1/500 000
Kilometres 10 0 10 20 30 40 Kilometres
Transverse Mercator Projection
CM 84°00', Scale Factor 1
© Crown copyrights reserved
Projection transverse de Mercator
CM 84°00', Scale Factor 1
© Droits de la Couronne réservés



Recommended Citation:
Schau, M., Venance, K., Brodric, B. and Berman, R., 1993: Metamorphic Map Pilot Study: 1:500,000 Northern Melville Peninsula (N.T.S. 47 A, B, C, D) as an example of ongoing compilation techniques. Geological Survey of Canada Open File 2595, scale 1:500,000.