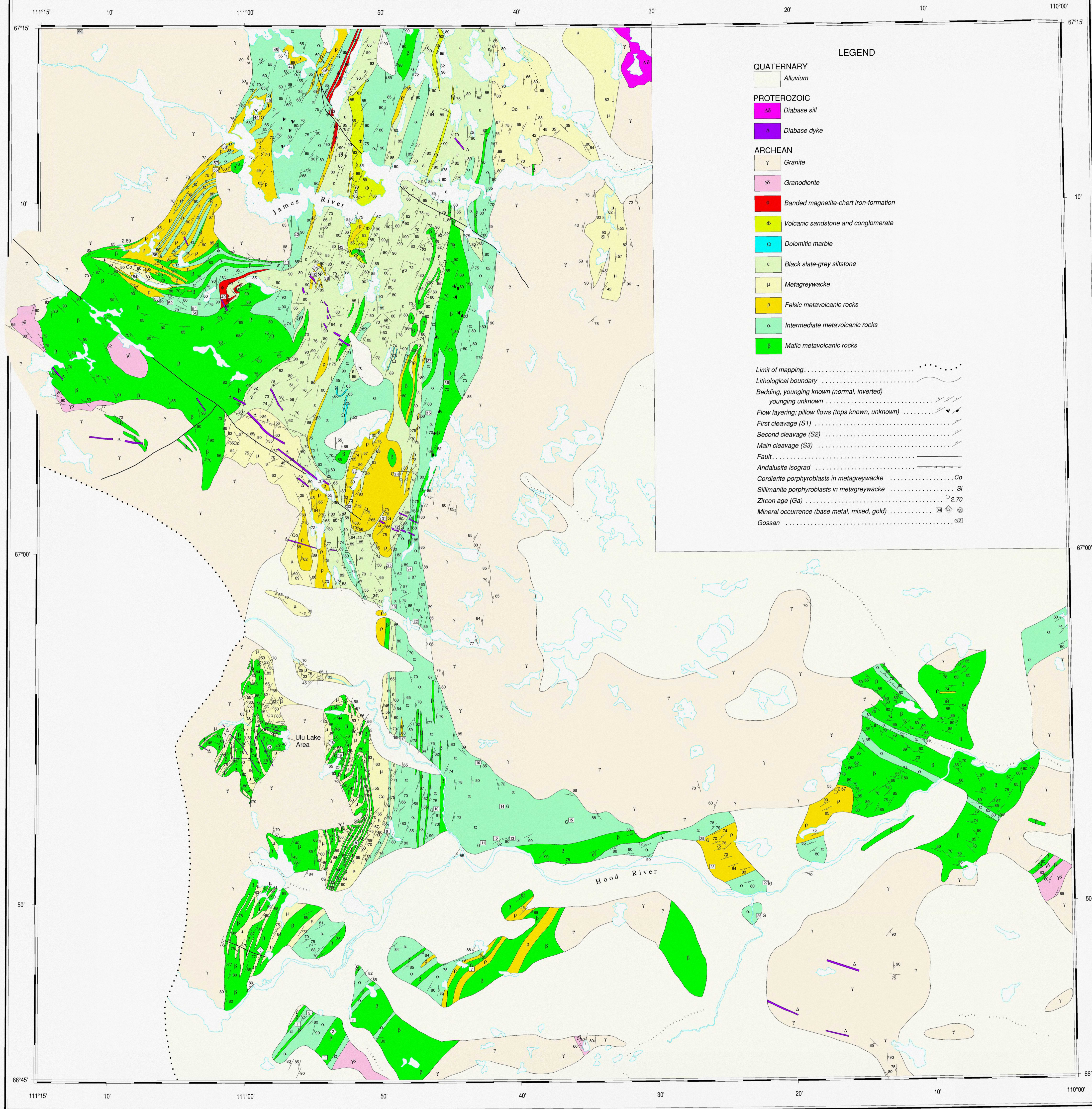


TABLE OF MINERAL OCCURRENCES

Table with columns: ID, NTS, Principal Commodities, Type, Status, Map unit, Name, NMI #, Coordinates, and Reference. Lists 59 mineral occurrences with details on location and status.

STATUS EXPLANATION
1 = Current Producer
2 = Past Producer
3 = Potential Producer
4 = Extensively Drilled
5 = Drilled Occurrence
6 = Trenched Occurrence
7 = Showing



LEGEND

- QUATERNARY: Alluvium
PROTEROZOIC: Diabase sill, Diabase dyke, Granodiorite, Banded magnetite-chert iron-formation, Volcanic sandstone and conglomerate, Dolomitic marble, Black slate-grey siltstone, Metagreywacke, Felsic metavolcanic rocks, Intermediate metavolcanic rocks, Mafic metavolcanic rocks

DESCRIPTIVE NOTES

PREVIOUS GEOLOGICAL MAPPING: The High Lake greenstone belt was mapped by Fraser (1964) as part of a reconnaissance mapping of the northwestern Canadian Shield...
DESCRIPTIVE NOTES: Rocks forming a basement terrane to the volcanic-sedimentary assemblages in the High Lake belt have not been recognized. The following lithological descriptions apply to units in the map legend...
METAMORPHISM: Metamorphic grade increases from north to south in the area mapped. An andalusite isograd is oriented approximately E-W.

REFERENCES

Baragar, W.R.A. 1975. Miscellaneous data from the volcanic belts at Yellowknife, Wolovine Lake, and James River, N.W.T. in Current Research, Geological Survey of Canada, Paper 75-1A, p. 281-286.
Easton, R.M. 1982. Preliminary geological compilation of the Heppburn Island map area (76M); Indian and Northern Affairs Canada, Geology Division, Yellowknife, EGS 1982-3.
Fraser, J.A. 1964. Geological Notes on the northwestern District of Mackenzie, N.W.T.; Geological Survey of Canada, Paper 63-40, 20 p. with Map 45-1983, scale 1:500 000.

ACKNOWLEDGMENTS

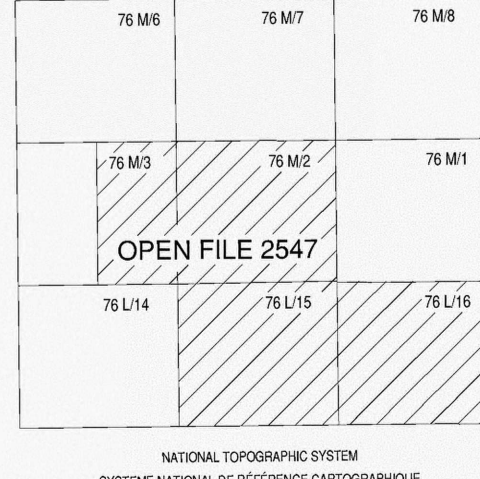
Bob Bretford located and compiled most of the mineral occurrences shown on the map and table. Boyan Brodic and Bob Taylor helped with problems in digitizing the field data. Mario Hudon produced the digital Open File map.

Geology by J.R. Henderson, Z. Arias, M.N. Henderson, D. Lemkow, T.O. Wright, R. Rice and J.A. Kerwin, 1992

PRELIMINARY GEOLOGICAL MAP OF CENTRAL HIGH LAKE GREENSTONE BELT DISTRICT OF MACKENZIE NORTHWEST TERRITORIES

OPEN FILE 2547 / DOSSIER PUBLIC 2547

Scale 1:100 000 - Echelle 1:100 000



Recommended citation:
Henderson, J.R., Arias, Z., Henderson, M.N., Lemkow, D., Wright, T.O., Rice, R., and Kerwin, J.A., 1992. Geology and Mineral Occurrences of the Southern Part of High Lake Greenstone Belt, Slave Province, Northwest Territories; Geological Survey of Canada Open File 2547, scale 1:100 000