

LEGEND

Geological legend table with columns for Quaternary, Late Proterozoic, Middle Proterozoic, Early Proterozoic, and Archean, listing various geological units and their descriptions.

DESCRIPTIVE NOTES

Introductory text and descriptive notes for the geological map, covering topics like tectonic elements, metamorphic zones, and structural features.

REFERENCES

Bibliographic references listing geological studies, maps, and reports from various authors and institutions.

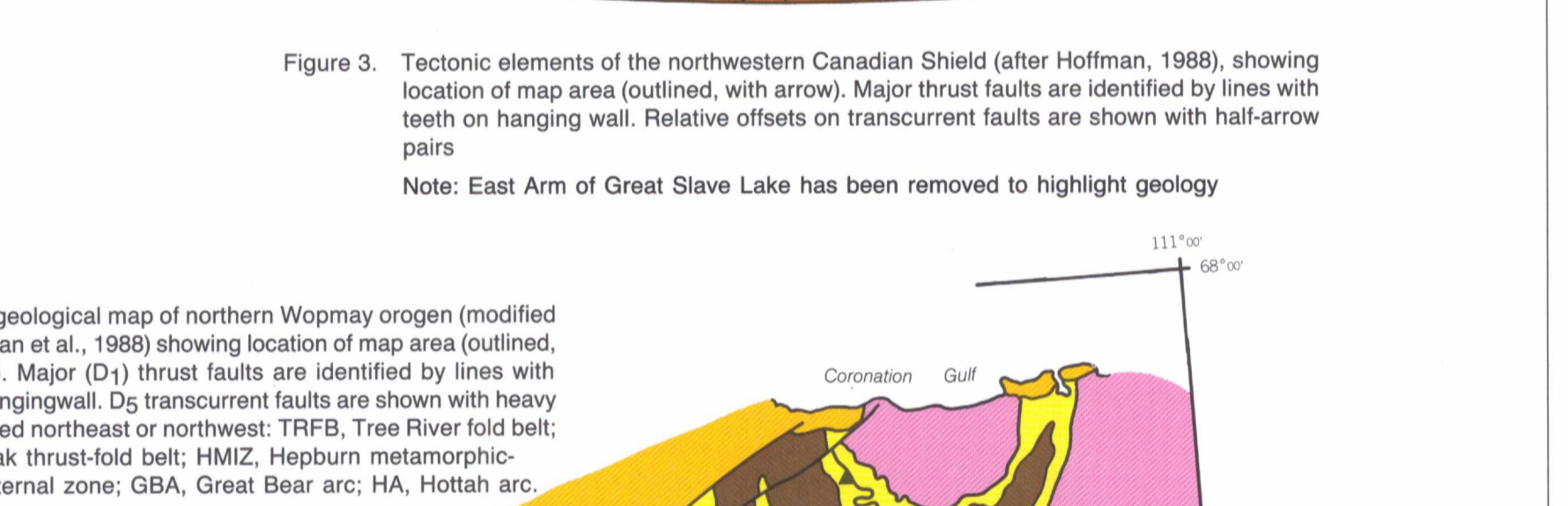


Figure 3. Tectonic elements of the northwestern Canadian Shield (after Hoffman, 1988), showing location of map area (outlined, with arrow)...

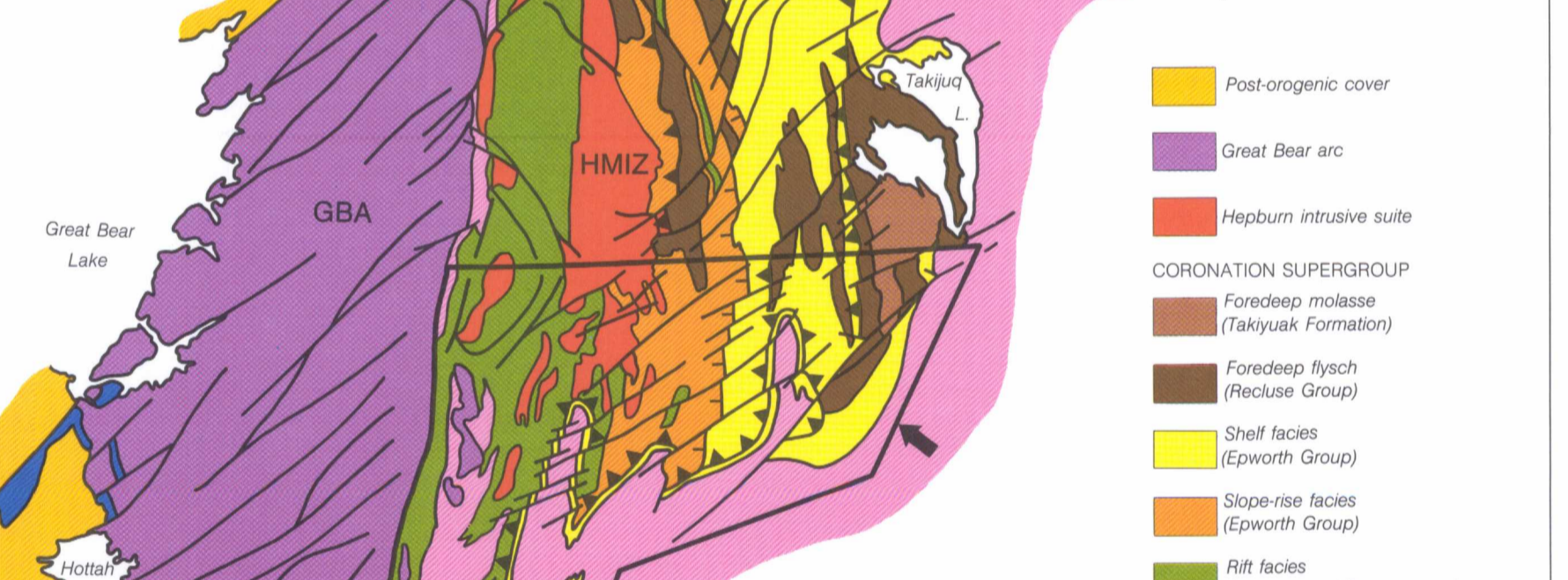


Figure 4. Simplified geological map of northern Wopmay orogen (modified from Hoffman et al., 1988) showing location of map area (outlined, with arrow)...

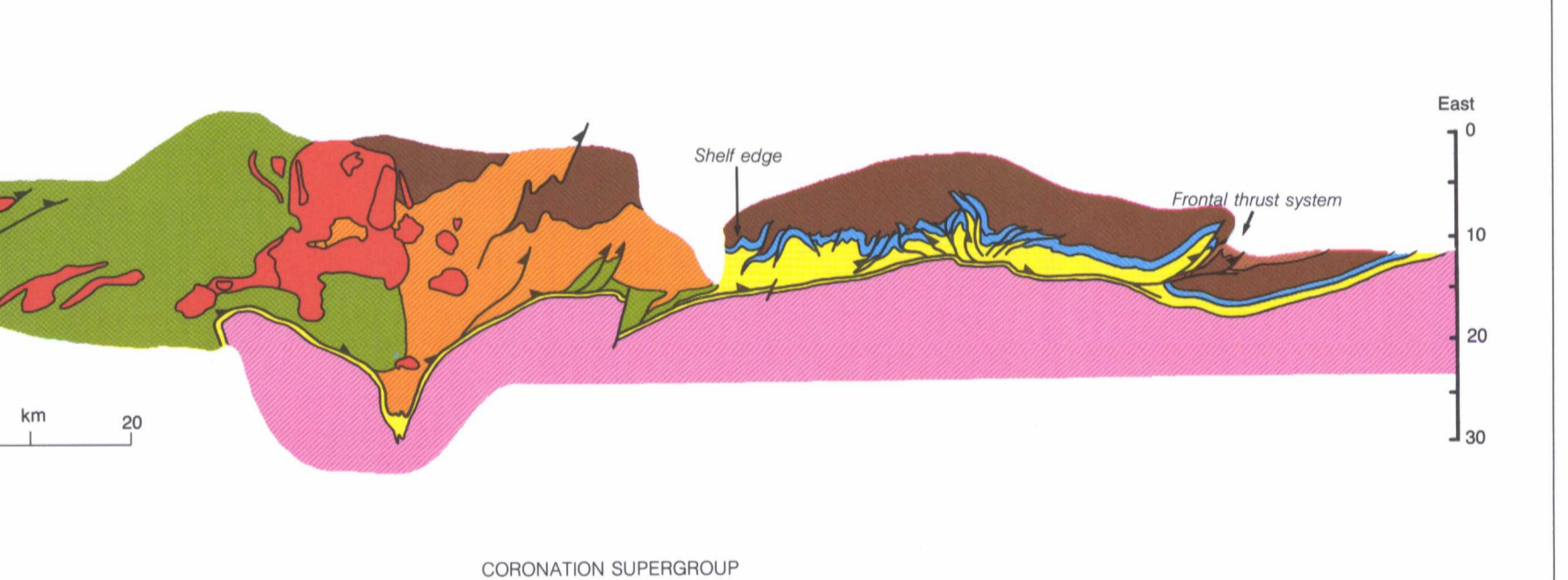


Figure 5. Composite down-plunge cross-section of eastern Wopmay orogen. External thrust-fold belt segment (east of shelf edge) is from Tirrul (1983) and metamorphic-plutonic internal zone segment (west of shelf edge) is from King (1988)...

Geological legend table for the map, listing units such as GRANT GROUP (Gg-Gr) and ARCHEAN (Sg-Sgr) with their descriptions.

Table of sources of information, listing authors like M.R. St-Onge, J.E. King, and A.E. Lalonde, along with their respective publications.

Table of descriptive notes, providing details about the geological units and structural features shown on the map.

Table of descriptive notes, continuing the details about geological units and structural features.