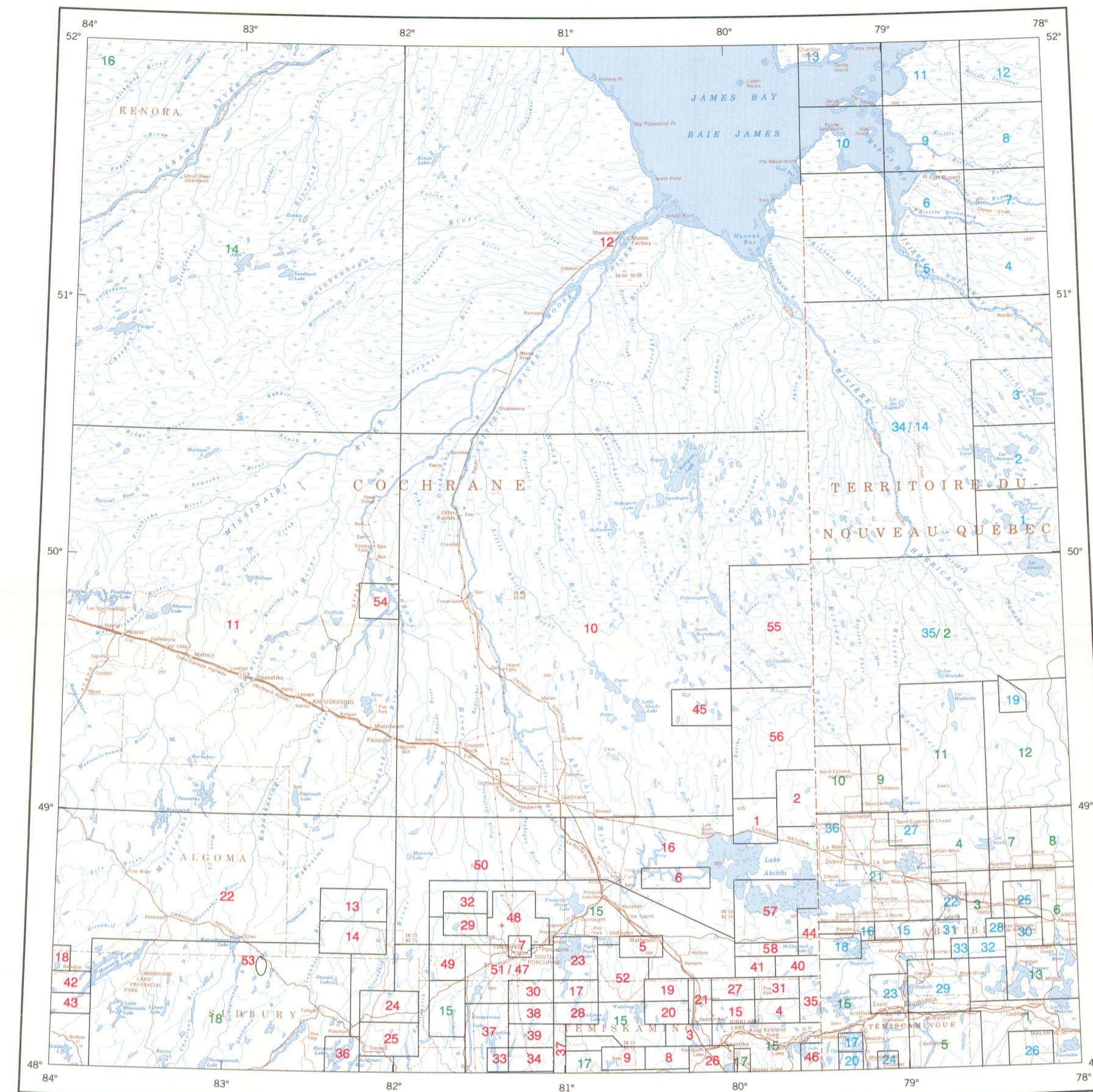
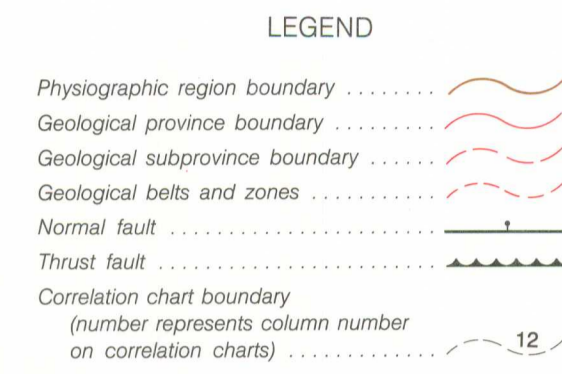


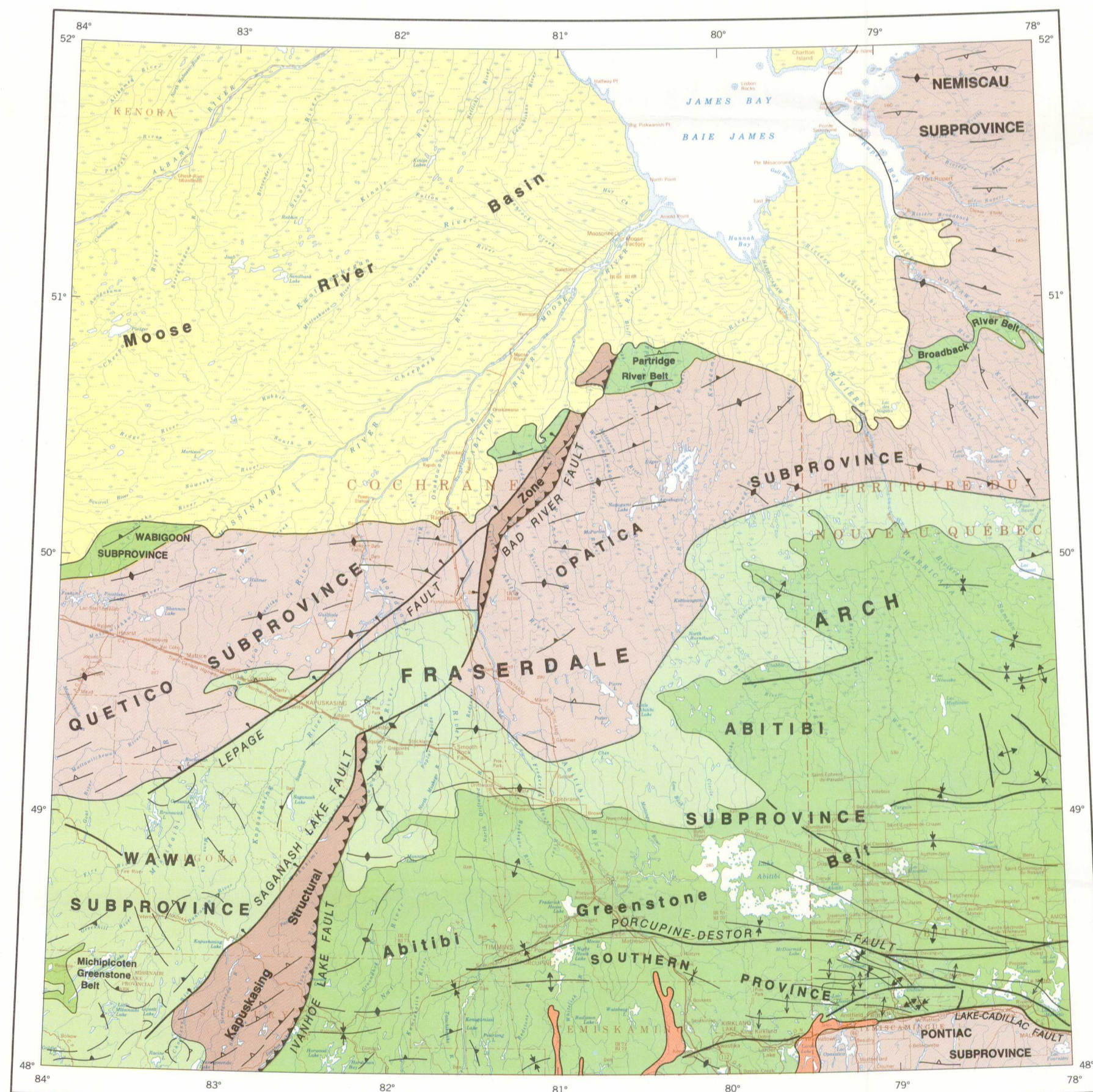
PHYSIOGRAPHIC AND TECTONIC FEATURES



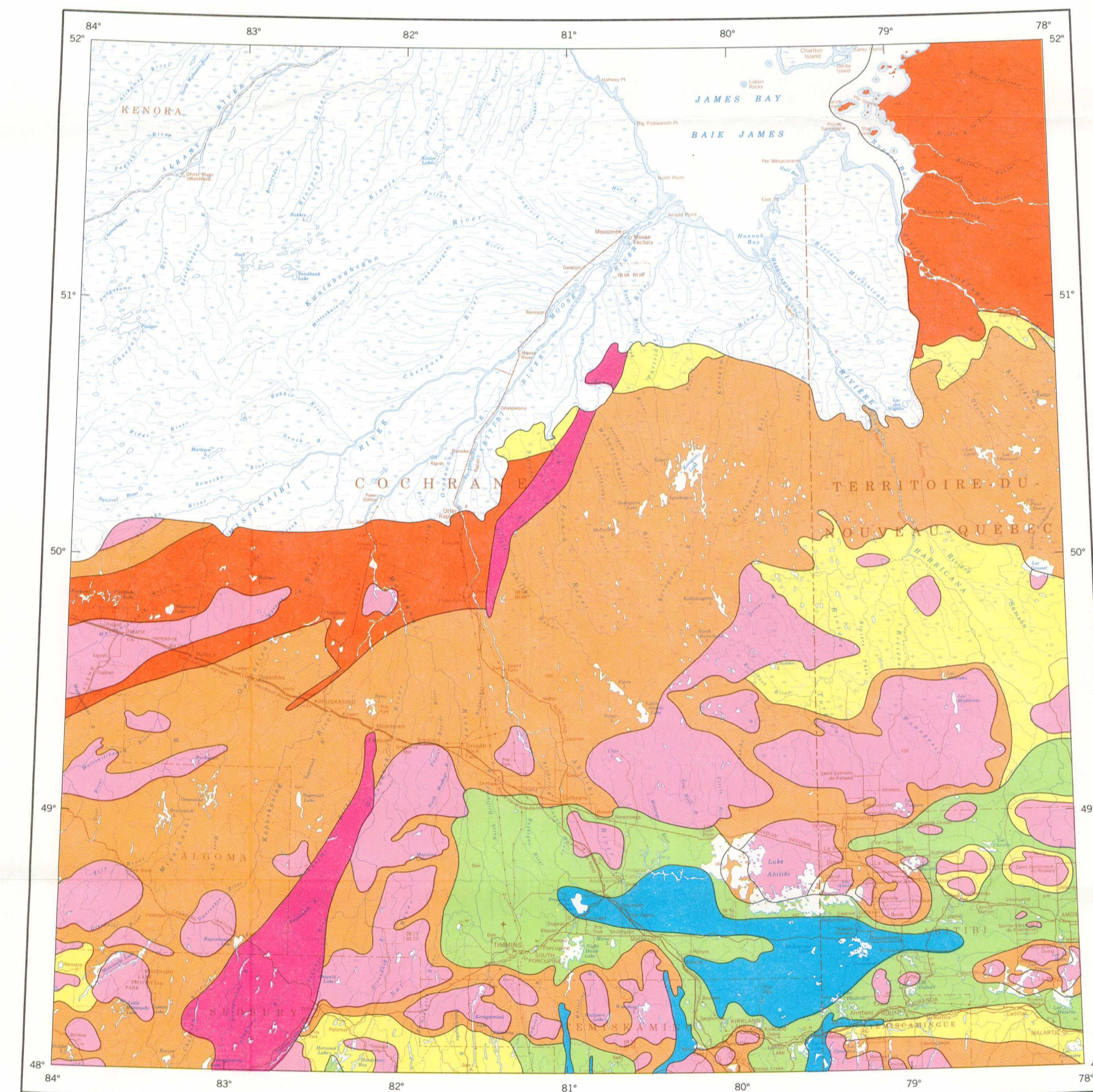
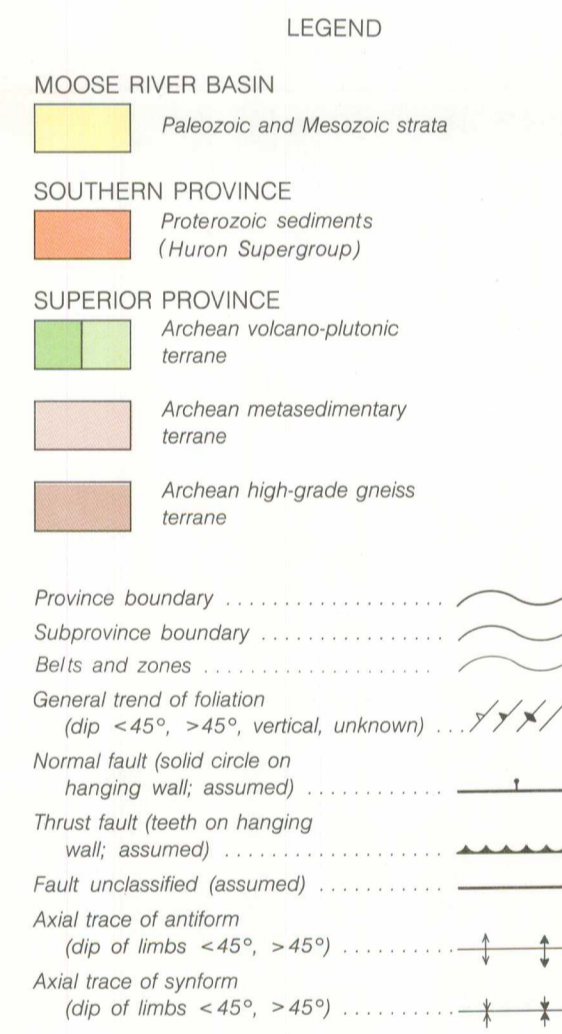
INDEX MAP OF MAJOR COMPILATION SOURCES

MAJOR COMPILATION SOURCES  
TIMMINS (NM-17-G)  
1:1 000 000 COMPILATION

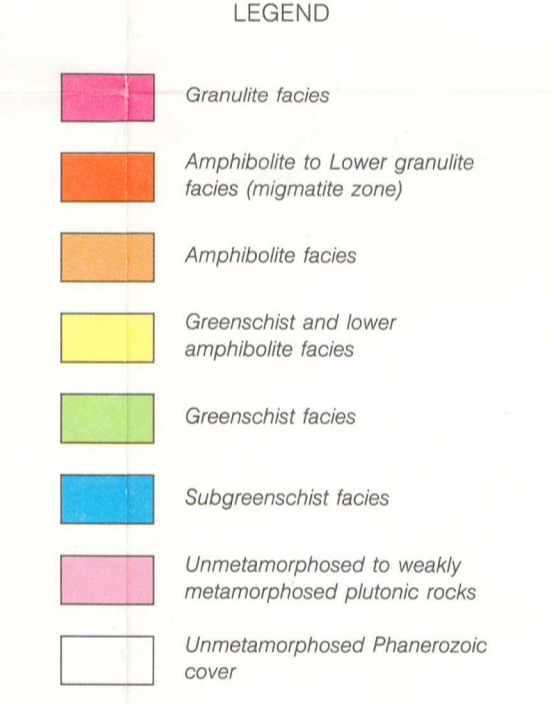
ONTARIO GEOLOGICAL SURVEY		QUÉBEC MINISTÈRE DE L'ÉNERGIE ET DES RESSOURCES			
1.	2018	Sheels, Bonis, Scapa Townships, 1/2 mile, 1962	1.	DP-245-5362G	Lac Paul-Sauvé, 1 mile, 1974
2.	2025	South Pattern River, 1/2 mile, 1963	2.	DP-245-5363G	Lac Lucie, 1 mile, 1974
3.	2060	Bompas, Grenfell Townships, 1/2 mile, 1964	3.	DP-245-5364G	Rivière Kichigamaie, 1 mile, 1974
4.	2061	Arnold, Katrine Townships, 1/2 mile, 1964	4.	DP-274-32M/1	Rivière Matauacamaie, 1:50 000, 1974
5.	2071	Currie, Bowman Townships, 1/2 mile, 1964	5.	DP-274-32M/2	Île D'Herbomez, 1:50 000, 1974
6.	2073	Rickard, Knox, Kiara Townships, 1/2 mile, 1964	6.	DP-274-32M/7	Fort Rupert, 1:50 000, 1974
7.	2075	Tadale Township, 1000 feet, 1966	7.	DP-274-32M/8	Colline Jaray, 1:50 000, 1974
8.	2078	Holmes, Burt Townships, 1/2 mile, 1966	8.	DP-274-32M/9	Feuille Fort-Rupert, 1:250 000, 1974
9.	2109	Baden, Alma Townships, 1/2 mile, 1966	9.	DP-274-32M/10	Pointe du Bois Brûlé, 1:50 000, 1974
10.	2161	Coral Rapids-Cochrane, 4 miles, 1968	10.	DP-274-32M/11	Cabbage Willows Bay, 1:50 000, 1974
11.	2166	Heard-Kapuskasung, 4 miles, 1969	11.	DP-274-32M/15	Boatswan Bay, 1:50 000, 1974
12.	2171	Moosonee, 4 miles, 1969	12.	DP-274-32M/16	Lac Coignan, 1:50 000, 1974
13.	2181	Belford, Montcalm Townships, 1/2 mile, 1969	13.	DP-358-2	Fort Rupert, 1:250 000, 1977
14.	2182	Nova, Stachan Townships, 1/2 mile, 1969	14.	DP-358-11	Lower Harcanaw River, 1:250 000, 1977
15.	2193	Bernhardt, Morrisette Townships, 1/2 mile, 1970	15.	9	Palmarolles, 1000 feet, 1950
16.	2205	Timmins-Kirkland Lake, 4 miles, 1973	16.	10	Duparquet, 1000 feet, 1949
17.	2206	Langmuir, Blackstock Townships, 1/2 mile, 1970	17.	75	Dufay(NE), 1:12 000, 1972
18.	2210	Glasgow, Meath, Renne Townships, 1/2 mile, 1974	18.	90	Hibécourt(S), 1:12 000, 1974
19.	2213	Tolstoi, Black Townships, 1/2 mile, 1971	19.	129	Joutel(SW) - Poirier(NW), 1:12 000, 1965
20.	2214	Terry, Lee Townships, 1/2 mile, 1971	20.	149	Dufay(SE), 1:12 000, 1972
21.	2215	Benot, Masonville Townships, 1/2 mile, 1971	21.	152	La Sarré, 1 mile, 1973
22.	2221	Chapleau-Foley, 4 miles, 1976	22.	222	Privat, 1:12 000, 1974
23.	2222	Night Hawk Lake, 1/2 mile, 1971	23.	268	Flaurin and Powell Plutons, 1 mile, 1973
24.	2230	Reeves, Sewell Townships, 1/2 mile, 1972	24.	281	Montbellard (SE), 1:12 000, 1975
25.	2231	Penhorwood, Kenogaming Townships, 1/2 mile, 1972	25.	316	Tédousson, 1:12 000, 1975
26.	2239	Eby, Otto Townships, 1/2 mile, 1972	26.	349	Strasburgh, Val D'Or, 1:100 000, 1976
27.	2252	Melba, Bissley Townships, 1/2 mile, 1972	27.	559	Canton Chazel, 1:20 000, 1978
28.	2253	Fallon, Fasken Townships, 1/2 mile, 1973	28.	561	Manneville(NE), 1:20 000, 1978
29.	2255	Robb, Jamieson Townships, 1/2 mile, 1974	29.	598	Cléry, 1:50 000, 1978
30.	2274	Adams, Eldorado Townships, 1/2 mile, 1974	30.	615	Wilmont, 1:20 000, 1979
31.	2283	Clifford, Ben Nevis Townships, 1/2 mile, 1974	31.	644	Aiguebelle(N,SE), 1:20 000, 1979
32.	2288	Loveland, Macdonald Townships, 1/2 mile, 1974	32.	651	Manneville(S), 1:20 000, 1979
33.	2289	Beemer, Moher Townships, 1/2 mile, 1974	33.	676	Aiguebelle(SE), 1:10 000, 1979
34.	2290	English, Zavitz Townships, 1/2 mile, 1974	34.	DPV-744	Gîtes Minérales du Québec, Région de l'Abitibi, 1981
35.	2296	Pontiac, Ossiam Townships, 1/2 mile, 1974	35.	M301	Feuille Rivière Haricana Inférieure, 32L, 1:250 000
36.	2329	Horwood Lake, 1/2 mile, 1978	35.	M305	Feuille Rivière Haricana Inférieure, 32E, 1:250 000
37.	2345	Peterlong Lake, 1:50 000, 1978	36.	M308	Feuille Rouyn-Noranda, 32D, 1:250 000
38.	2363	McArthur, Douglas Townships, 1/2 mile, 1978			
39.	2364	Bartlett, Gekie Townships, 1/2 mile, 1978			
40.	2367	Tannahill, Dokis Townships, 1/2 mile, 1978			
41.	2368	Thackeray, Elliott Townships, 1/2 mile, 1978			
42.	2380	Stover, Bracklin Townships, 1/2 mile, 1978			
43.	2381	Marsh, Lang Townships, 1/2 mile, 1978			
44.	2390	Stoughton, Marriott Townships, 1/2 mile, 1978			
45.	2410	Twopeak Lake, 1/2 mile, 1979			
46.	2445	McFadden, Rattray Townships, 1/2 mile, 1980			
47.	2455	Timmins, 1:50 000, 1982			
48.	P.425	Timmins, 1 mile, 1967			
49.	P.633	Kamskoti-Whitesides, 1 mile, 1971			
50.	P.698	Pamour, 2 miles, 1971			
51.	P.941	Timmins, 1 mile, 1974			
52.	P.1078	Watabeag River, 1 mile, 1976			
53.	P.2221	Shenango Alkali Complex, 1/4 mile, 1980			
54.	P.2239	Clay-Howells Complex, 1/4 mile, 1979			
55.	P.2242	Burnbush-DeTour Lakes north, 1:50 000, 1979			
56.	P.2243	Burnbush-DeTour Lakes south, 1:50 000, 1979			
57.	P.2433	Lightning River, 1 mile, 1982			
58.	P.2434	Mague River, 1 mile, 1982			



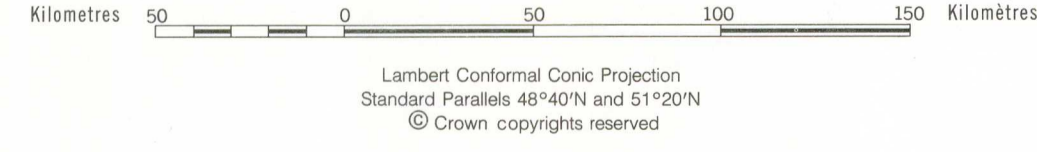
LITHO-TECTONIC SUBDIVISIONS



PRECAMBRIAN METAMORPHISM



**TIMMINS**  
ONTARIO-QUÉBEC  
GEOLOGICAL ATLAS, MAP NM-17-G  
SHEET 5 OF 5  
GENERAL CO-ORDINATOR: A.V. OKULITCH  
Scale 1:2 000 000 - Échelle 1/2 000 000



Geological compilation by K.D. Card and B.V. Sanford, 1982  
Contributions from J.A. Percival, S.B. Lumbers, J.S. Fox and J. Laffeur  
Reviewed by M. Hocq and L. Imreh, Ministère de l'Énergie et des Ressources du Québec; P. Thurston, Ontario Geological Survey  
Geological cartography by R.L. Allard, Geological Survey of Canada

Base map reduced from 1:1 000 000 scale, published by the Surveys and Mapping Branch in 1971 with some modification by the Geological Survey of Canada for this edition  
This 1:2 000 000 scale map is part of the Geological Atlas of Canada and is plotted on the International Map of the World (IMW) base. Geology is one parameter being published in the National Earth Science Series

Printed by the Cartographic Information and Distribution Centre, Published 1989

This map has been reprinted from a scanned version of the original map. Reproduction par numérisation d'une carte sur papier.