

55A

Alta, Sask & Manitoba 1913

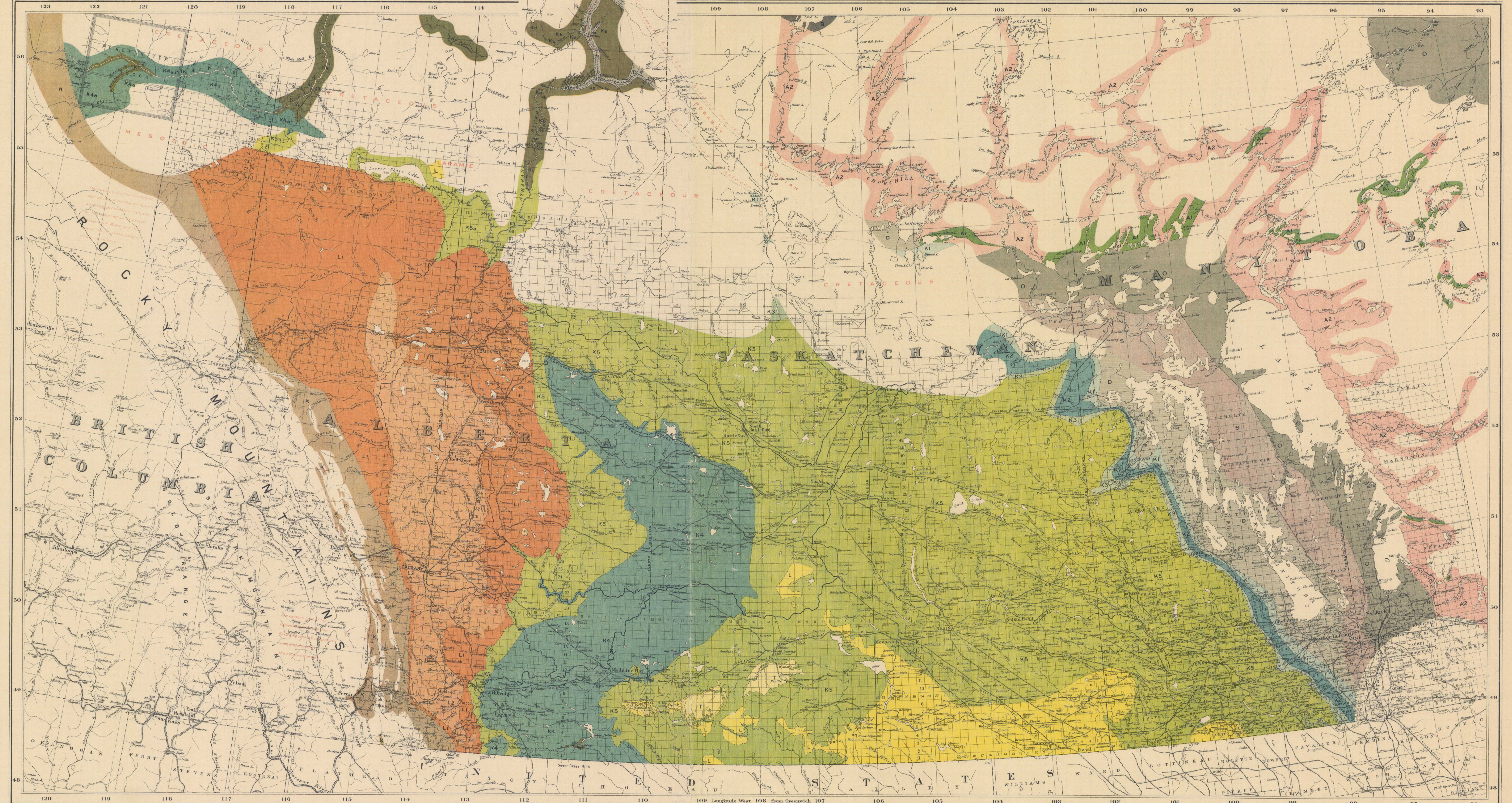
MADE IN BRITAIN
ARCLIGHT
VERTICAL FILING SYSTEMS.
Moisten the full length of gummed edges,
place tracing squarely on lower half, and
press strip down firmly.
STRIP REF. No. 5703/028

REF. or DRAWING No. ALBERTA, SASKATCHEWAN & MANITOBA

DETAILS Geological - To accompany Memoir No. 29
Map No. 55A 1913

Manufactured by
MASONS OF COLCHESTER, ENGLAND for
THE HUGHES-OWENS CO., LTD.,
HALIFAX, MONTREAL, OTTAWA,
TORONTO, HAMILTON, WINNIPEG,
EDMONTON, CALGARY, VANCOUVER.

Canada
Department of Mines
GEOLOGICAL SURVEY
Hon. L. CODRRE, MINISTER. A. P. LOW, DEPUTY MINISTER.
R. W. BROCK, DIRECTOR.



LEGEND

TERTIARY	L Oligocene	L Laramie
LARAMIE	L2 Parkson	L1 Edmonton
	K5 Verre and Foxhall <i>(In the east they include portions of the Laramie)</i>	K5a LaRue (Piperston) and Foxhall
MESODIC	K4 Belly River	K4a Dauvegan
CRETACEOUS	K3 Niobrara	K3a-Kg Mesaudo
	K2 Niobrara Section Kd LaRue Dauvegan Kc Polson Kb Grand Rapids Ka Clearwater	K2 Peace Section Kf Fort St. John Kd Peace River Kc Polson Kb Grand Rapids Ka Clearwater Kg Lower dark shales
	K1 Dakota	K1a Tee Sands
PALEODIC	D Devonian	
	S Silurian	
	O Ordovician	
PRE-CAMBRIAN	B Albion sandstone	
	A2 Laurentian	
	A1 Keweenaw and Huronian	

Geological boundary
(Position defined or approximately known)

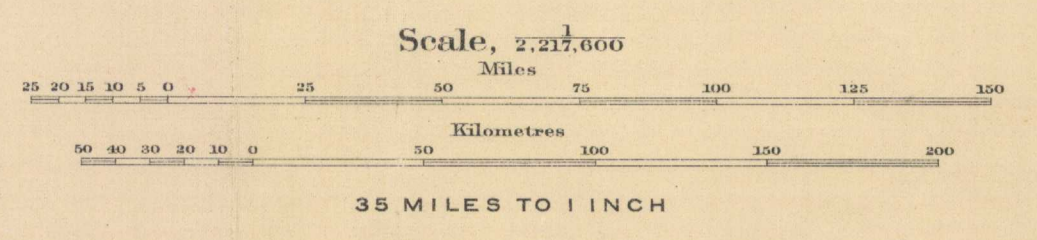
Geological boundary
(Position assumed)

Note: The term *Laramie* is used with the implied meaning given by C. M. Dawson in the Report of Progress for 1900-01, page 41, as a group term to include all the stratigraphically conformable formations from the top of the Peace Forkall to the unconformity below the Oligocene.

C. O. SENN, Geographer and Chief Draughtsman
A. S. SMITH, Draughtsman

Base map from original plates of the Department of the Interior
Geology compiled from published and unpublished maps of the Geological Survey.

MAP 55A
(Revised 1903)
Geological Map
of
ALBERTA, SASKATCHEWAN AND MANITOBA



NOT TO BE TAKEN FROM LIBRARY
NE PAS SORTIR DE LA BIBLIOTHÈQUE

Alberta, Sask. & Manitoba.
To accompany Memoir No. 29

5.1.1
A. Geol.

1221
G
3401
- 55
1910 -
G-4
★ ob map
55A