

LEGEND FOR THE GEOLOGY OF THE SILURIAN SPRINGDALE CALDERA, KING'S POINT-SHEFFIELD LAKE COMPLEX AND SPATIALLY ASSOCIATED SUITES

THE SPRINGDALE CALDERA VOLCANIC AND SEDIMENTARY ROCKS

THE KING'S POINT AND SHEFFIELD LAKE COMPLEXES, VOLCANIC ROCKS

INTENSIVE COMPLEXES SPATIALLY RELATED TO THE EVOLUTION OF THE SPRINGDALE CALDERA

SILURIAN AND YOUNGER SEQUENCES IN THE VICINITY

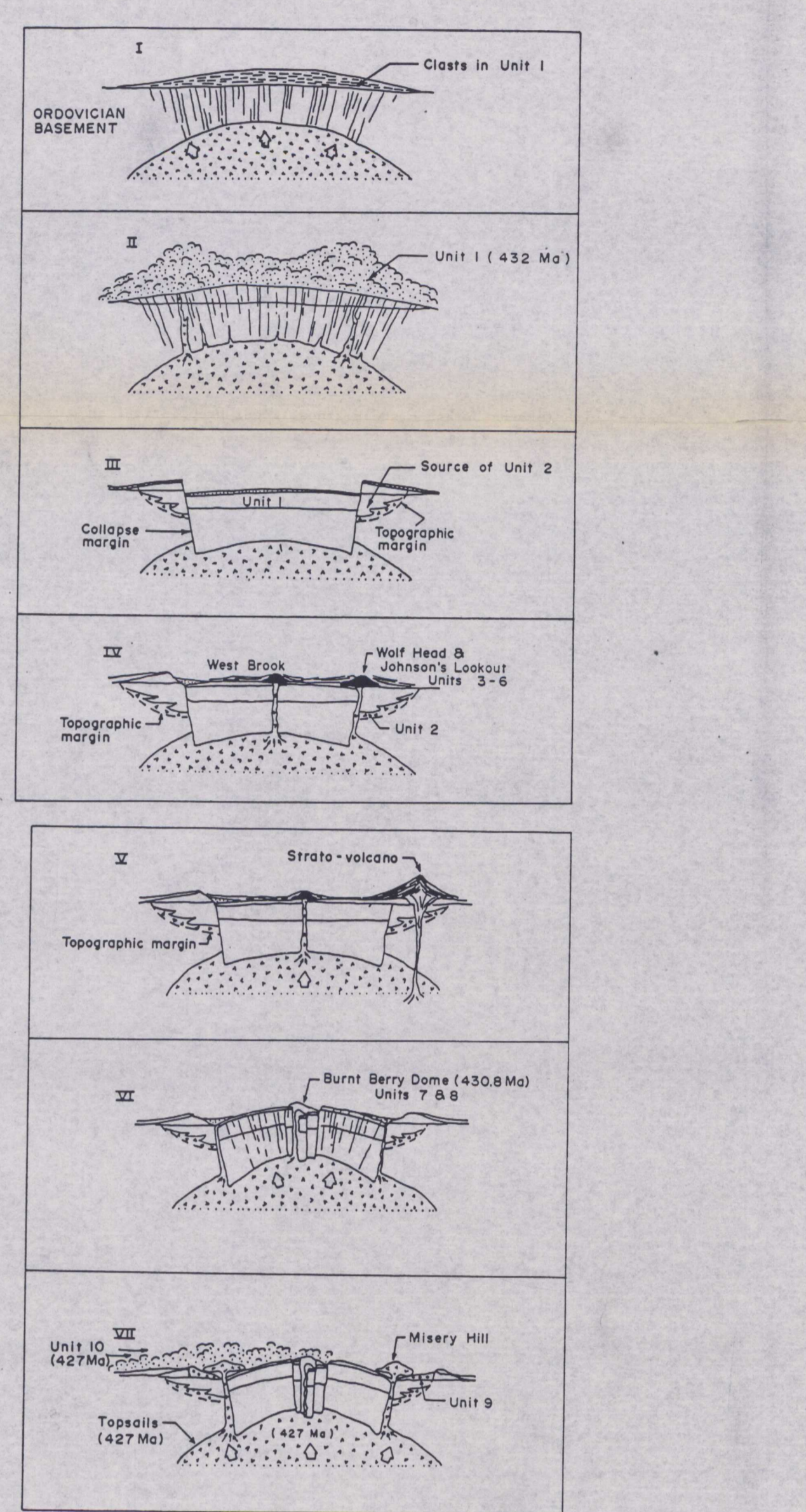
BASEMENT LITHOLOGIES OF THE SPRINGDALE CALDERA

BASEMENT LITHOLOGIES SPATIALLY ASSOCIATED WITH THE SPRINGDALE CALDERA AND KING'S POINT-SHEFFIELD LAKE COMPLEXES

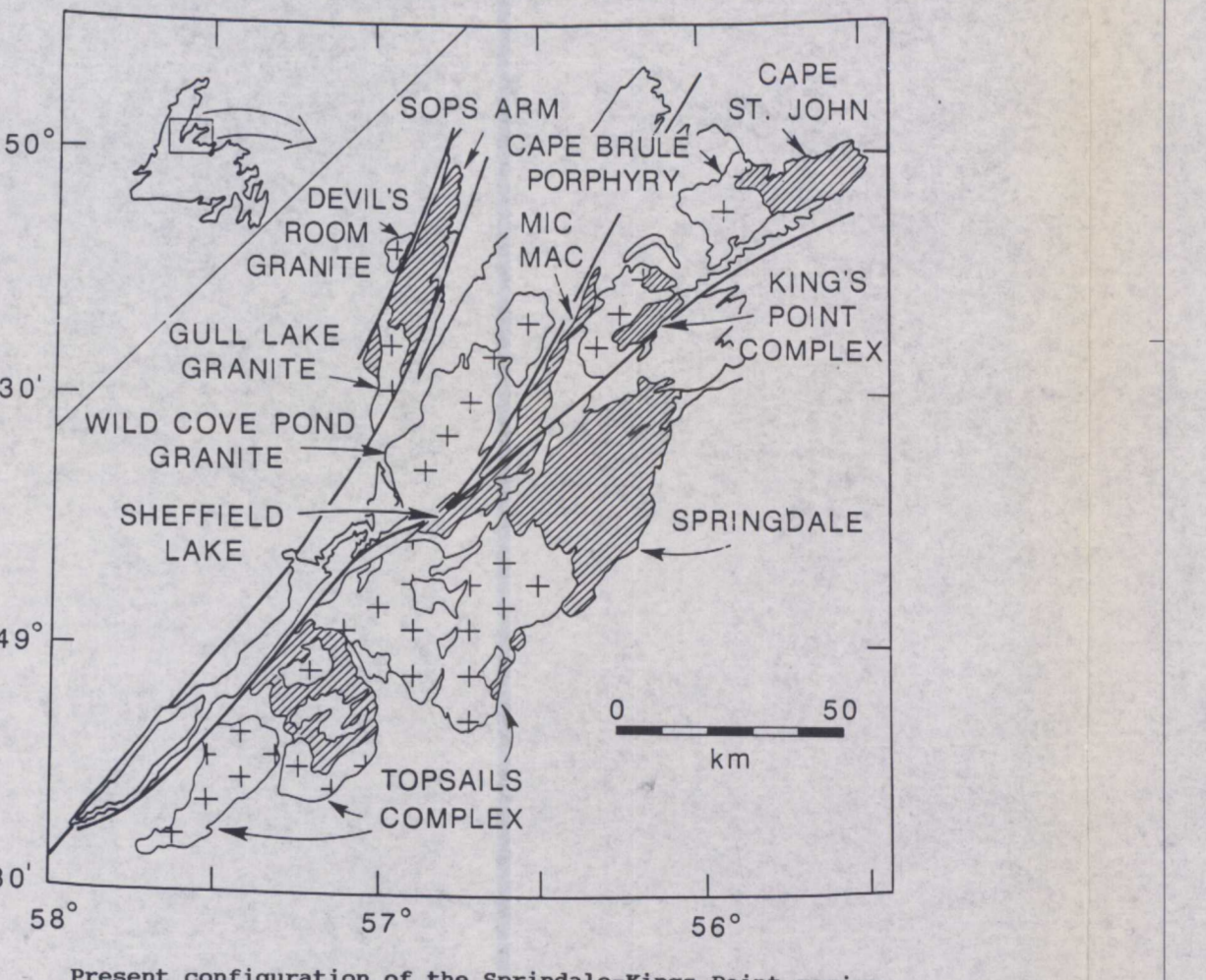
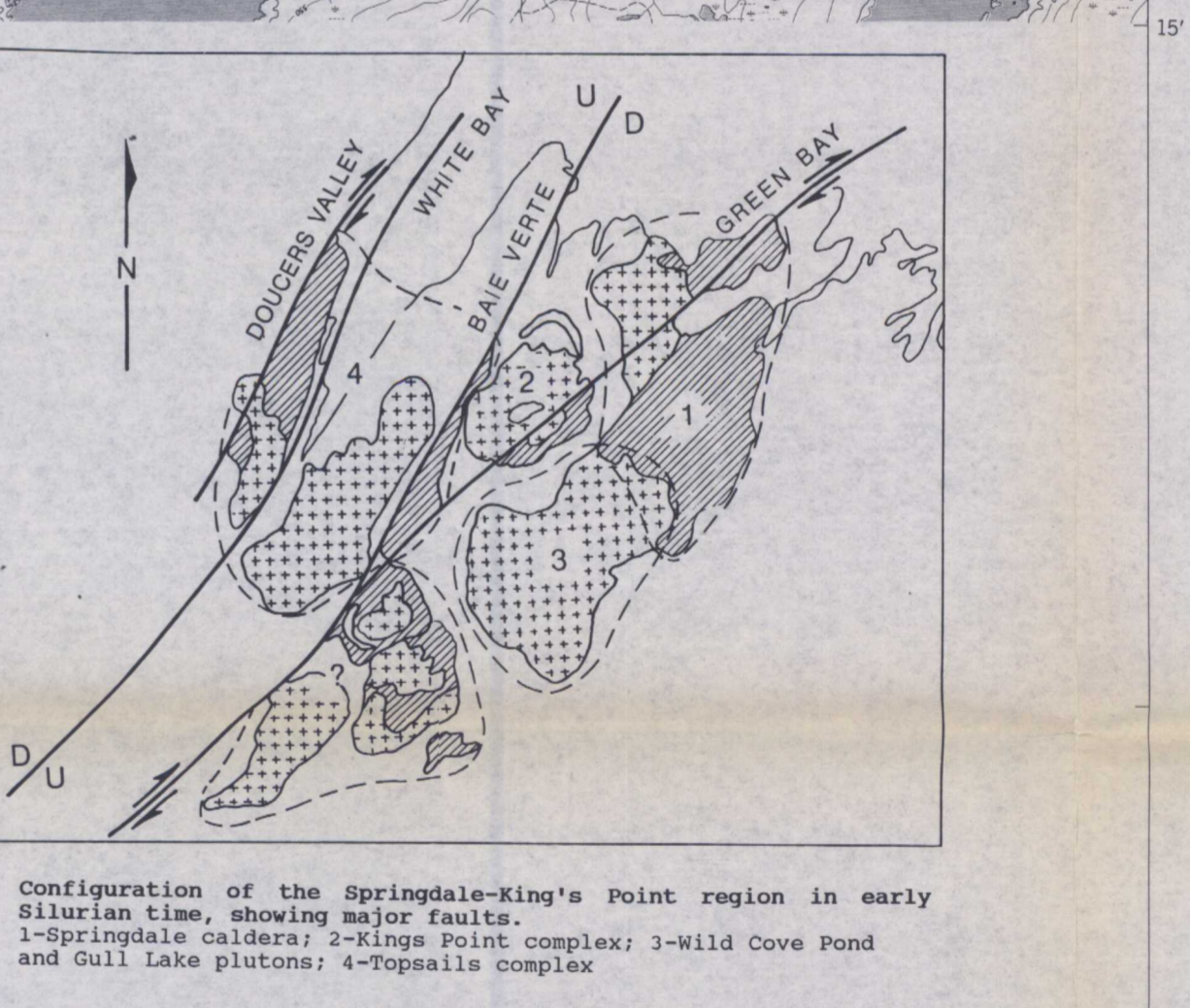
SPRINGDALE CALDERA INTENSIVE ROCKS

SPRINGDALE CALDERA INTENSIVE ROCKS (continued)

SPRINGDALE CALDERA INTENSIVE ROCKS (continued)



Geological notes and descriptions of the units shown in the stratigraphic columns. The notes discuss the relationships between the units and the tectonic evolution of the area.



Deformation in these complexes is neither pervasive nor extensive. Little evidence of deformation is seen in the King's Point-Sheffield Lake Complex, except along the obvious regional fault, or evidence to indicate tectonic deformation of the Springdale Caldera. Deformation of the Springdale Caldera is limited to the area of the Springdale Caldera and the King's Point-Sheffield Lake Complex. Deformation of the Springdale Caldera is limited to the area of the Springdale Caldera and the King's Point-Sheffield Lake Complex.

References: Coyle, R. and Strong, D.F. 1987. Geology of the Springdale Group: a newly recognized Silurian igneous-plutonic complex in the Newfoundland. Canadian Journal of Earth Sciences 24, p. 1115-1128. Coyle, R., Strong, D.F., and Simpwell, D.S. 1988. Geology of the Springdale Lake area. Geological Survey of Canada Paper 88-11, p. 455-459. Hines, J.L. 1981. Geology of the King's Point-Sheffield Lake Complex, Newfoundland. Newfoundland Department of Mines and Energy, Mineral Development Division Report 77-1, 11 p. Keen, B.F. 1977. Geology of the Victoria Lake area (128-0). Newfoundland. Newfoundland Department of Mines and Energy, Mineral Development Division Report 77-1, 11 p. Keen, B.F., and Swann, D.T.W. 1988. Regional metamorphism of the Victoria Lake Group, Newfoundland Department of Mines and Energy, Mineral Development Division, Report 88-1, p. 113-119. Hines, J.L. and Strong, D.F. 1986. The volcano-plutonic King's Point Complex, Newfoundland. Geological Survey of Canada Paper 86-11, p. 455-459. Mercer, B., Strong, D.F., Wilson, D.H.C., and Gibson, D. 1985. The King's Point Complex, western Newfoundland. Geological Survey of Canada Paper 85-11, p. 77-78. Whalen, Z.B., and Curtis, R.L. 1988. Geology, Topicalia Igneous Complex, Newfoundland. Geological Survey of Canada Paper 88-11, p. 455-459.