

Metamorphic Petrology

High-Pressure M₁ Assemblages

Pelitic and Semi-Pelitic Schists

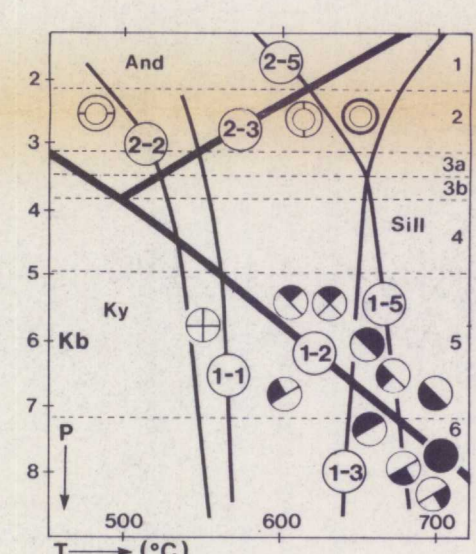
- gt-bt-Naf-ms-qtz
- ⊕ St-Ky-gt-bt-Naf-ms-qtz±(sill)
- ⊗ Ky-gt-bt-Naf-ms-qtz±(sill)
- ⊗ Ky-gt-bt-Naf-ms-qtz±ton.melt±(sill)
- ⊗ Ky-gt-bt-Naf-Kf-ms-qtz-gr.melt±(sill)
- ⊗ Ky-gt-bt-Naf-Kf-qtz-gr.melt±(sill)
- ⊗ Sill-gt-bt-Naf-ms-qtz
- ⊗ Sill-gt-bt-Naf-ms-qtz±ton.melt
- ⊗ Sill-gt-bt-Naf-Kf-ms-qtz-gr.melt
- ⊗ Sill-gt-bt-Naf-Kf-qtz-gr.melt
- ⊗ Sill-gt-bt-Naf-Kf-qtz-gr.melt±(musc.)
- ⊗ Sill-gt-bt-Naf-qtz±ton.melt±(musc.)
- ⊗ Bt-gt-Naf-Kf-qtz±gr.melt±(musc.)

Orthogneiss, Paragneiss, Mafic Gneiss

- Bt-Naf-qtz±ton.melt
- ▣ Bt-hbl-sph-Naf-qtz±ton.melt
- ▣ Bt-hbl-gt-sph-Naf-qtz±ton.melt
- ▣ Bt-gt-sph-Naf-qtz±ton.melt
- ▣ Bt-hbl-sph-Naf-Kf-qtz±gr.melt
- ▣ Bt-gt-Naf-Kf-qtz±gr.melt
- ▣ Bt-hbl-gt-sph-Naf-Kf-qtz±gr.melt
- ▣ Bt-gt-sph-Naf-Kf-qtz±gr.melt
- ▣ Bt-hbl-gt-cpx-sph-Naf-qtz±ton.melt
- ▣ Bt-hbl-cpx-sph-Naf-qtz±ton.melt
- ▣ Bt-hbl-gt-cpx-sph-Naf-Kf-qtz±gr.melt
- ▣ Cpx-sph-Naf-Kf±gr.melt
- ◊ Cpx-tr-cc-qtz±Naf±sph

Low-Pressure M₂ Assemblages

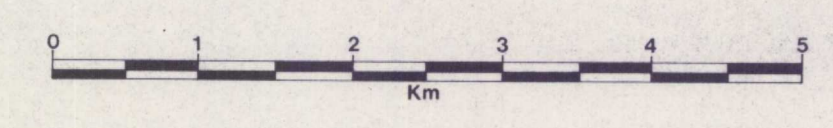
- chl-bt-ep-ms
- And-ms-bt
- Sill-ms-bt
- Sill-gt-bt-Kf-gr.melt
- chl-bt-ep-ms
- chl-bt-clz-act



Source of Data

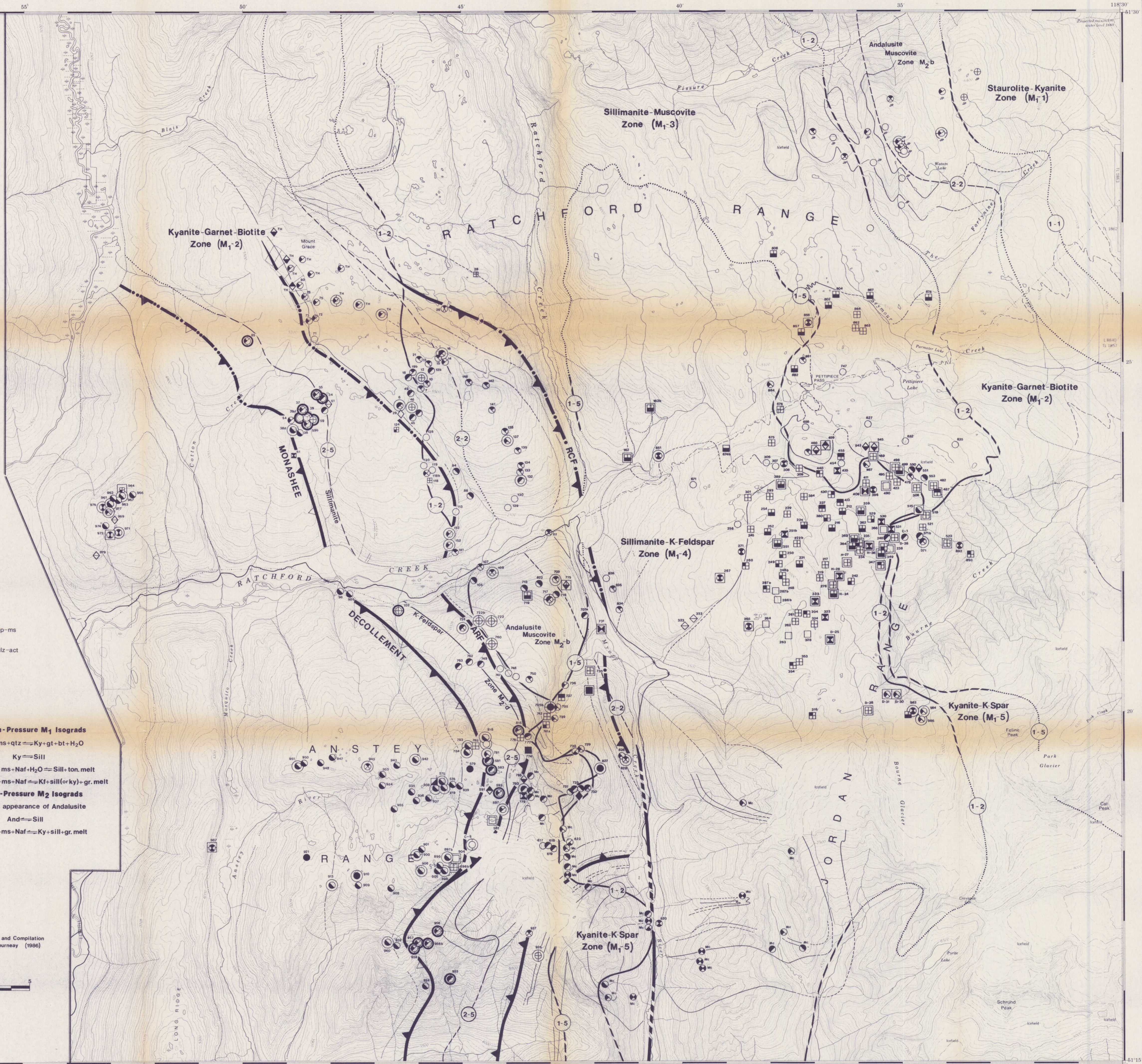
(286) Murray Journeay (1983, 1986)
 (TH) Trygve Höy (1982, pers. comm.)
 (JP) John Pautka (1978)
 (Mc) William McMillan (1970)

Petrology and Compilation
 Murray Journeay (1986)



Sheet 4 of 5

OPEN FILE
 DOSSIER PUBLIC
 2447
 GEOLOGICAL SURVEY
 COMMISSION GÉOLOGIQUE
 OTTAWA



This map has been produced from a scanned version of the original map
 Reproduction par numérisation d'une carte sur papier