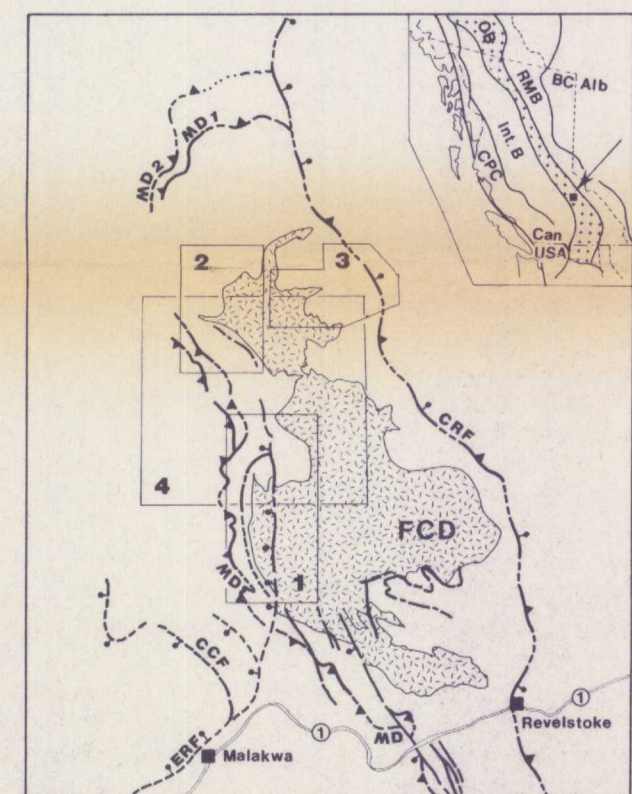


Geology of North Central Frenchman Cap Dome

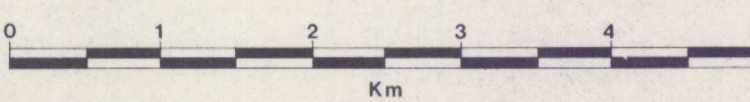
LEGEND

- Quaternary alluvium.**
- Igneous Rocks**
- Selkirk Allochthon**
- Monashee Complex**
- Metasedimentary Cover (Proterozoic)**
- Basement Terrane (Aphesian)**

Location and Previous Work



- 1 W. McMillan 1970
- 2 T. Höy 1978
- 3 J. Peutka 1978
- 4 M. Journeay This study



O.F. 2447

\$12.00
Sheet 1 of 5

