

PRELIMINARY SERIES

LEGEND

**PROTEROZOIC**

**HADRYNIAN**

Hb Gabbro sills, sheets, dykes

**HELIXIAN**

Hh ELIKE FORMATION: quartzite, conglomerate

**APHEBIAN**

Goulburn Group  
Burnside River Formation: pink quartzite, conglomerate, sandstone, shale

gAgp  
Western River Formation: quartzite, greywacke, red siltstone, shale, carbonates, conglomerate

**ARCHEAN**

Ag Quartz diorites, quartz monzonites, granodiorites, granite

An Granitic gneiss, migmatite, mixed gneisses involving Yellowknife rocks

Agn Granitoid gneiss, gneissified rocks, minor granite, biotite-hornblende schist and gneiss (within the Churchill Province)

**YELLOWKNIFE SUPERGROUP**

yAwp Greywacke, shale

yAsdr Cordierite-andalusite bearing knotted schist and other metamorphic equivalents of yAwp

yAvr Acidic lava, tuff, agglomerate

yAvb Intermediate to basic lava, tuff, agglomerate, and undifferentiated acidic volcanic rocks

Boundary between Slave and Churchill geological provinces.....

Anticline.....

Syncline.....

Mineral prospect showing principal element(s)..... Cu, K

Location and number of sample site (sediment stored to minus 250 mesh, second number indicates duplicate sample)..... 2689, 2690

Location and number of sample site (sediment stored to minus 100 mesh, second number indicates duplicate sample)..... 4899, 5000

**MINERALS**

Copper..... Cu Lead..... Pb

Gold..... Au Zinc..... Zn

Iron..... Fe

Geology after unpublished map compiled by J. C. McGlynn, 1971

Field work by R. J. Allan, R. M. Cameron, C. C. Durham, R. Benson, R. Colley, R. Cumming, G. Laid, D. Mann, C. Price, G. Thomas and R. Wronoski

Geological cartography by the Geological Survey of Canada

Location numbers drawn by computer drum plotter

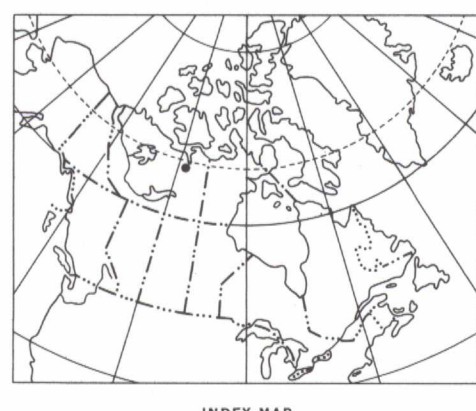
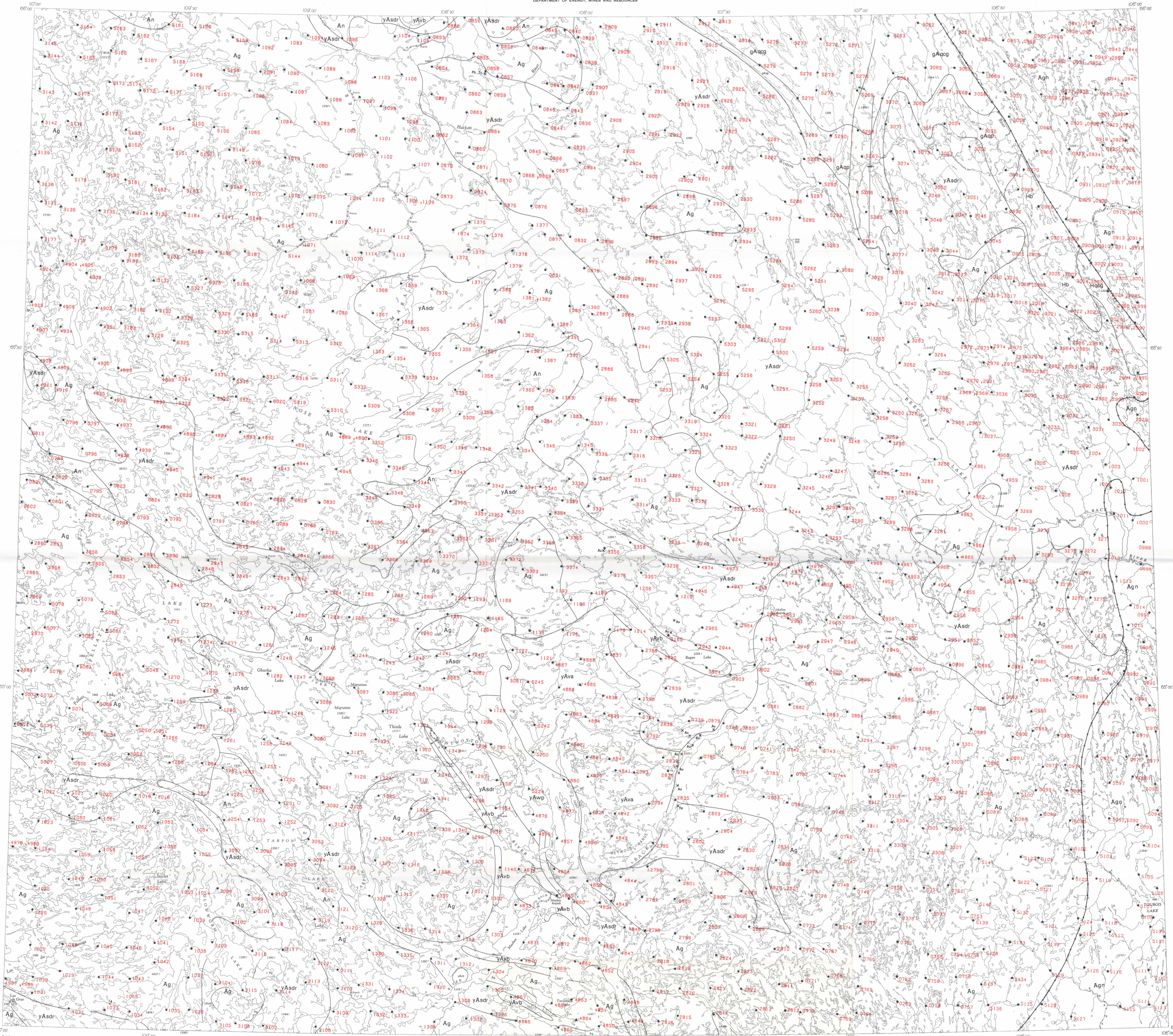
Any revisions or additional geological information known to the user would be welcomed by the Geological Survey of Canada

Base-map assembled by the Geological Survey of Canada from maps published at the same scale by the Army Survey Establishment R. C. E. in 1944, 1966

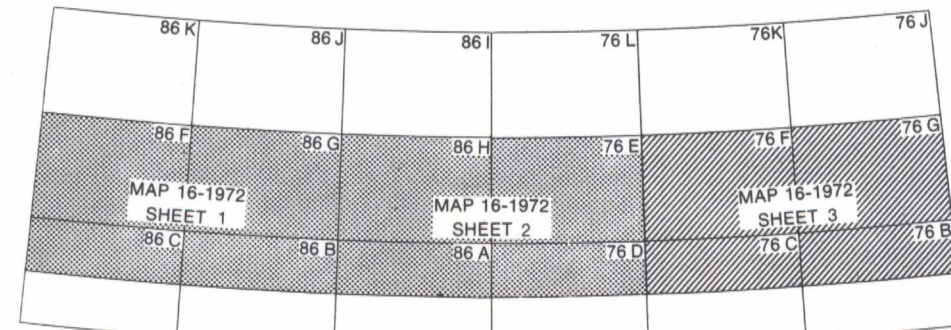
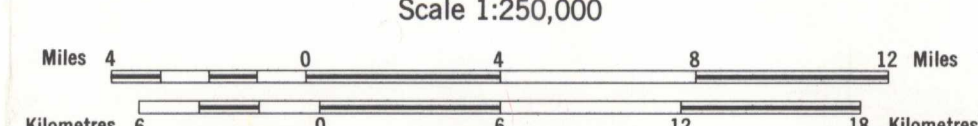
Copies of the topographical maps covering this map-area may be obtained from the Canada Map Office, 615 Booth Street, Ottawa, Ontario K1A 0B9

Mean magnetic declination 1973, 30° 34' East, decreasing 6.0' annually. Readings vary from 27° 13' in the SE corner to 34° 16' in the NW corner of the map-area

Elevations in feet above mean sea-level



MAP 16-1972  
SHEET 3  
**LAKE SEDIMENTS SAMPLE LOCATIONS  
BEAR-SLAVE OPERATION**  
DISTRICT OF MACKENZIE  
Scale 1:250,000



NATIONAL TOPOGRAPHIC SYSTEM REFERENCE AND INDEX  
TO ADDITIONAL GEOLOGICAL SURVEY OF CANADA MAPS  
MAP 16-1972  
SHEET 3  
**LAKE SEDIMENTS SAMPLE LOCATIONS  
BEAR-SLAVE OPERATION**  
DISTRICT OF MACKENZIE