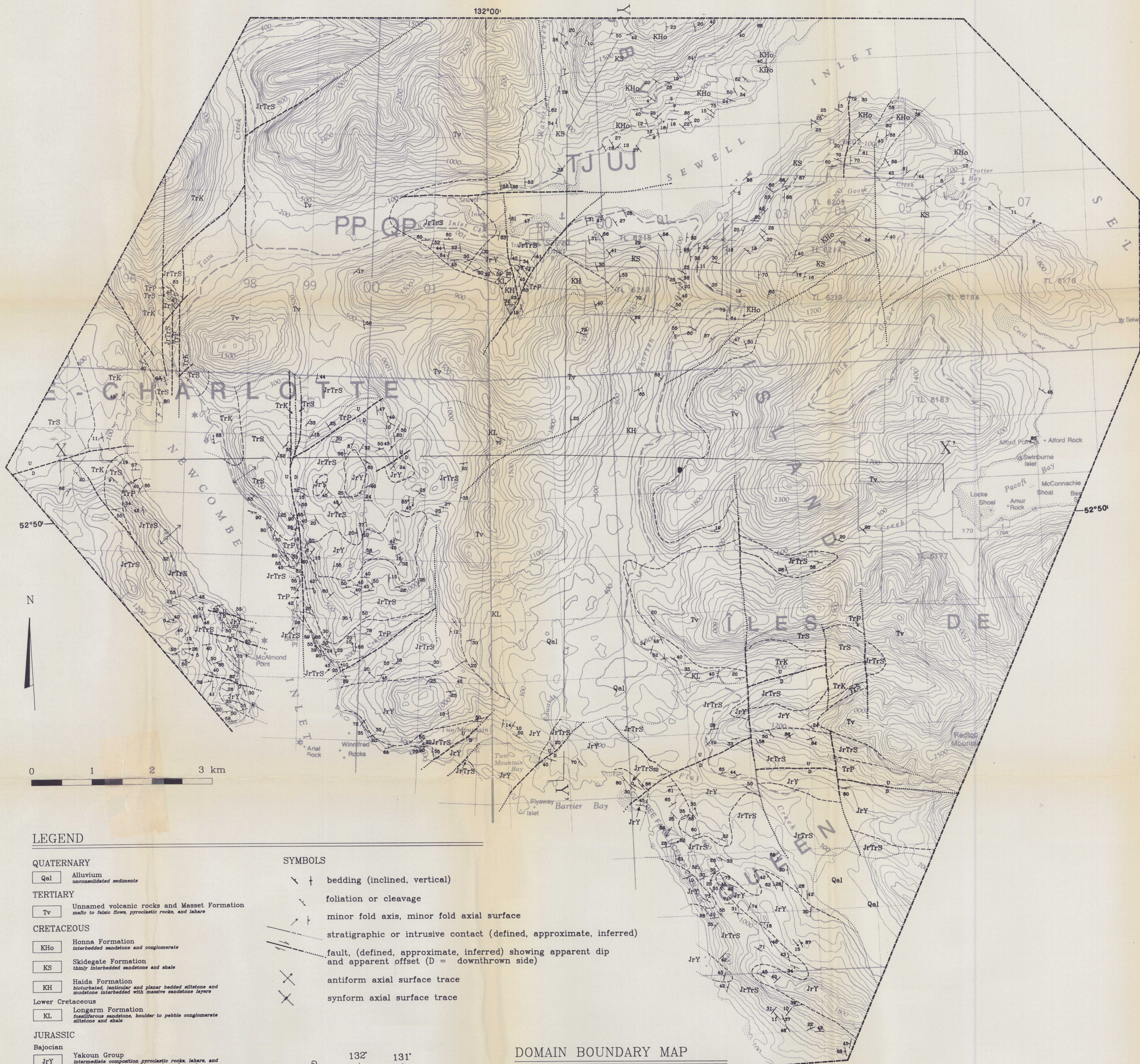


GEOLOGY OF THE SEWELL INLET - TASU SOUND AREA QUEEN CHARLOTTE ISLANDS, BRITISH COLUMBIA

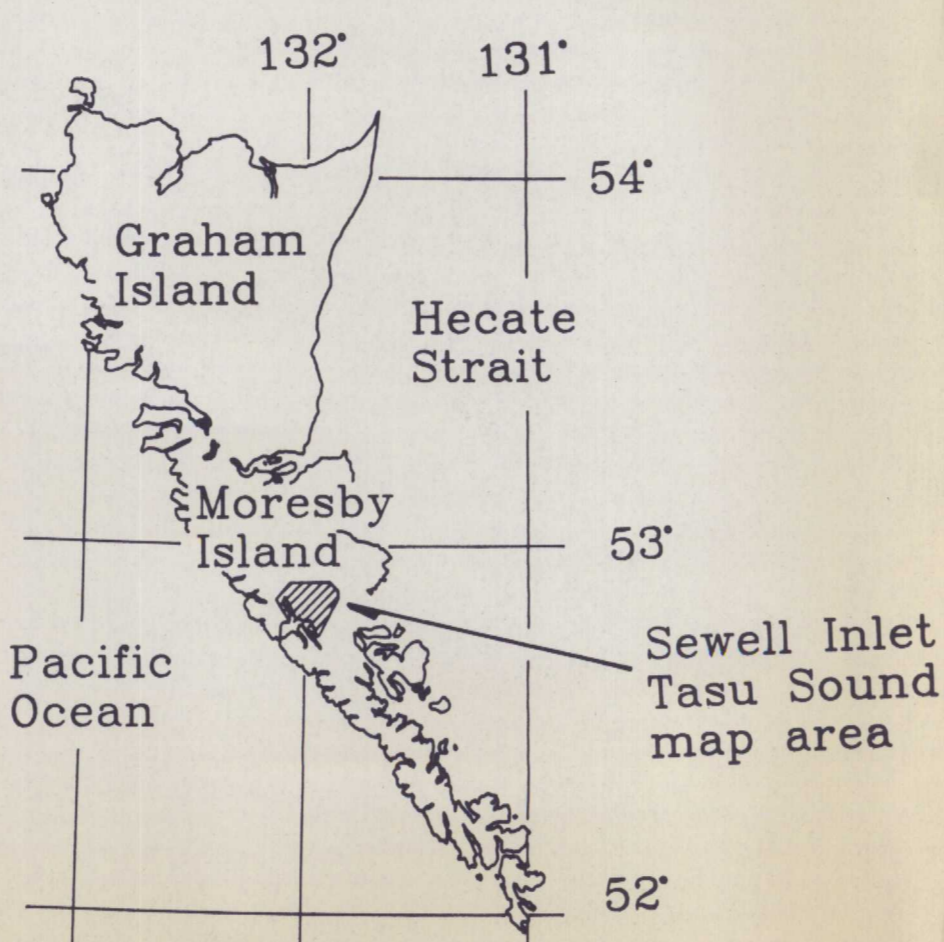


LEGEND

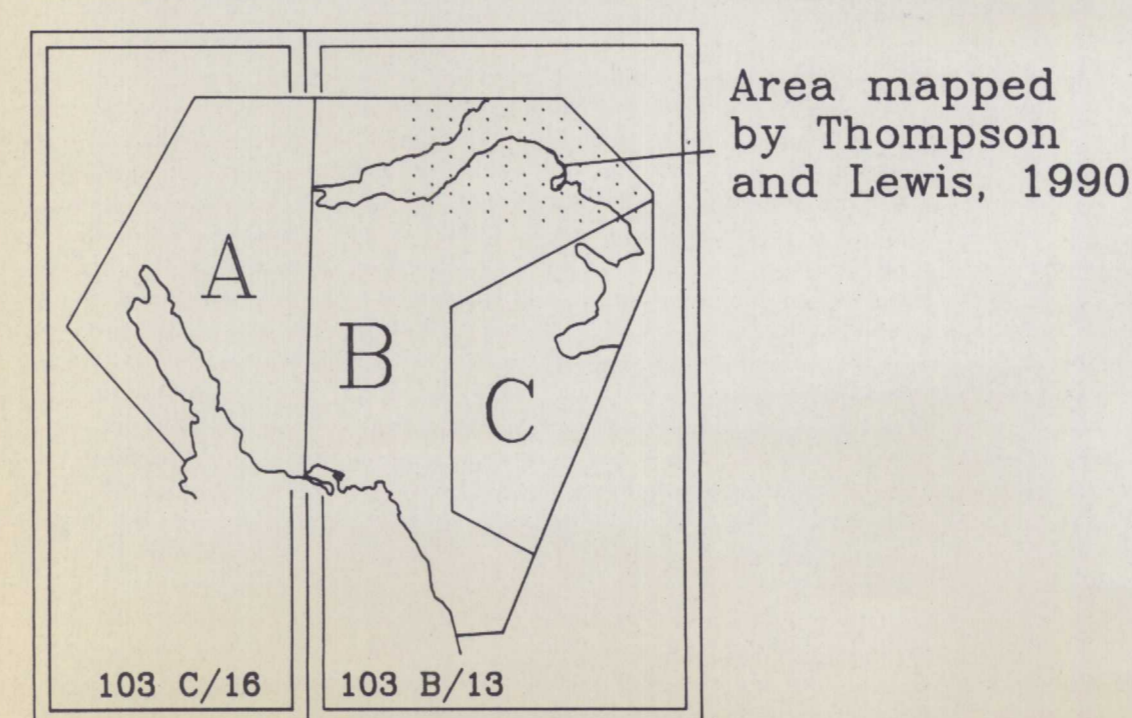
- QUATERNARY**
Qal Alluvium
unconsolidated sediments
- TERTIARY**
Tv Unnamed volcanic rocks and Masset Formation
and to felsic flows, pyroclastic rocks, and lahars
- CRETACEOUS**
KHo Honna Formation
interbedded sandstone and conglomerate
KS Skidegate Formation
thinly interbedded sandstone and shale
KH Heide Formation
interbedded, lenticular and planar bedded siltstone
and sandstone interbedded with massive sandstone layers
Lower Cretaceous
KL Longarm Formation
massive sandstone, boulder to pebble conglomerate
siltstone and shale
- JURASSIC**
Bajocian
JrY Yakoun Group
intermediate composition pyroclastic rocks, lahars, and
epitaxial sandstone, siltstone, and conglomerate
- UPPER TRIASSIC AND LOWER JURASSIC**
KUNGA GROUP
Upper Norian to Sinemurian
JrTrS Sandilands Formation
fine grained sandstone, shale, limestone, and tuffaceous
sandstone
Lower to Middle Norian
TrP Peril Formation
dark gray to black medium-bedded calcareous siltstone
and limestone with rare occasional sandstone beds
up to several metres thick
Upper Carnian to Lower Norian
TrS Sadler Limestone
massive crystalline, locally fossiliferous grey limestone
- UPPER TRIASSIC**
TrK Karmutsen Formation
basaltic composition massive flows, pillowed flows, and flow breccias

SYMBOLS

- bedding (inclined, vertical)
- foliation or cleavage
- minor fold axis, minor fold axial surface
- stratigraphic or intrusive contact (defined, approximate, inferred)
- fault, (defined, approximate, inferred) showing apparent dip and apparent offset (D = downthrown side)
- antiform axial surface trace
- synform axial surface trace



DOMAIN BOUNDARY MAP



Geology and compilation
by Susan Taite, 1991

INTERPRETIVE CROSS SECTIONS

