

DESCRIPTIVE NOTES

The western Queen Elizabeth Islands in the high Arctic region... The northern boundary between zones 2 and 3 extends to the northern limit of woody species... The vegetation in the region is a result of local conditions and is not necessarily representative of the entire region.

INFLUENCE OF SURFICIAL MATERIALS ON VEGETATION PATTERNS

The soil types of the high Arctic region... The vegetation in the region is a result of local conditions and is not necessarily representative of the entire region.

INFLUENCE OF CLIMATE ON VEGETATION PATTERNS

The climate of the high Arctic region... The vegetation in the region is a result of local conditions and is not necessarily representative of the entire region.

INFLUENCE OF CLIMATE ON VEGETATION PATTERNS

The climate of the high Arctic region... The vegetation in the region is a result of local conditions and is not necessarily representative of the entire region.

INFLUENCE OF CLIMATE ON VEGETATION PATTERNS

The climate of the high Arctic region... The vegetation in the region is a result of local conditions and is not necessarily representative of the entire region.

INFLUENCE OF CLIMATE ON VEGETATION PATTERNS

The climate of the high Arctic region... The vegetation in the region is a result of local conditions and is not necessarily representative of the entire region.

INFLUENCE OF CLIMATE ON VEGETATION PATTERNS

The climate of the high Arctic region... The vegetation in the region is a result of local conditions and is not necessarily representative of the entire region.

INFLUENCE OF CLIMATE ON VEGETATION PATTERNS

The climate of the high Arctic region... The vegetation in the region is a result of local conditions and is not necessarily representative of the entire region.

INFLUENCE OF CLIMATE ON VEGETATION PATTERNS

The climate of the high Arctic region... The vegetation in the region is a result of local conditions and is not necessarily representative of the entire region.

INFLUENCE OF CLIMATE ON VEGETATION PATTERNS

The climate of the high Arctic region... The vegetation in the region is a result of local conditions and is not necessarily representative of the entire region.

INFLUENCE OF CLIMATE ON VEGETATION PATTERNS

The climate of the high Arctic region... The vegetation in the region is a result of local conditions and is not necessarily representative of the entire region.

INFLUENCE OF CLIMATE ON VEGETATION PATTERNS

The climate of the high Arctic region... The vegetation in the region is a result of local conditions and is not necessarily representative of the entire region.

INFLUENCE OF CLIMATE ON VEGETATION PATTERNS

The climate of the high Arctic region... The vegetation in the region is a result of local conditions and is not necessarily representative of the entire region.

INFLUENCE OF CLIMATE ON VEGETATION PATTERNS

The climate of the high Arctic region... The vegetation in the region is a result of local conditions and is not necessarily representative of the entire region.

INFLUENCE OF CLIMATE ON VEGETATION PATTERNS

The climate of the high Arctic region... The vegetation in the region is a result of local conditions and is not necessarily representative of the entire region.

INFLUENCE OF CLIMATE ON VEGETATION PATTERNS

The climate of the high Arctic region... The vegetation in the region is a result of local conditions and is not necessarily representative of the entire region.

INFLUENCE OF CLIMATE ON VEGETATION PATTERNS

The climate of the high Arctic region... The vegetation in the region is a result of local conditions and is not necessarily representative of the entire region.

INFLUENCE OF CLIMATE ON VEGETATION PATTERNS

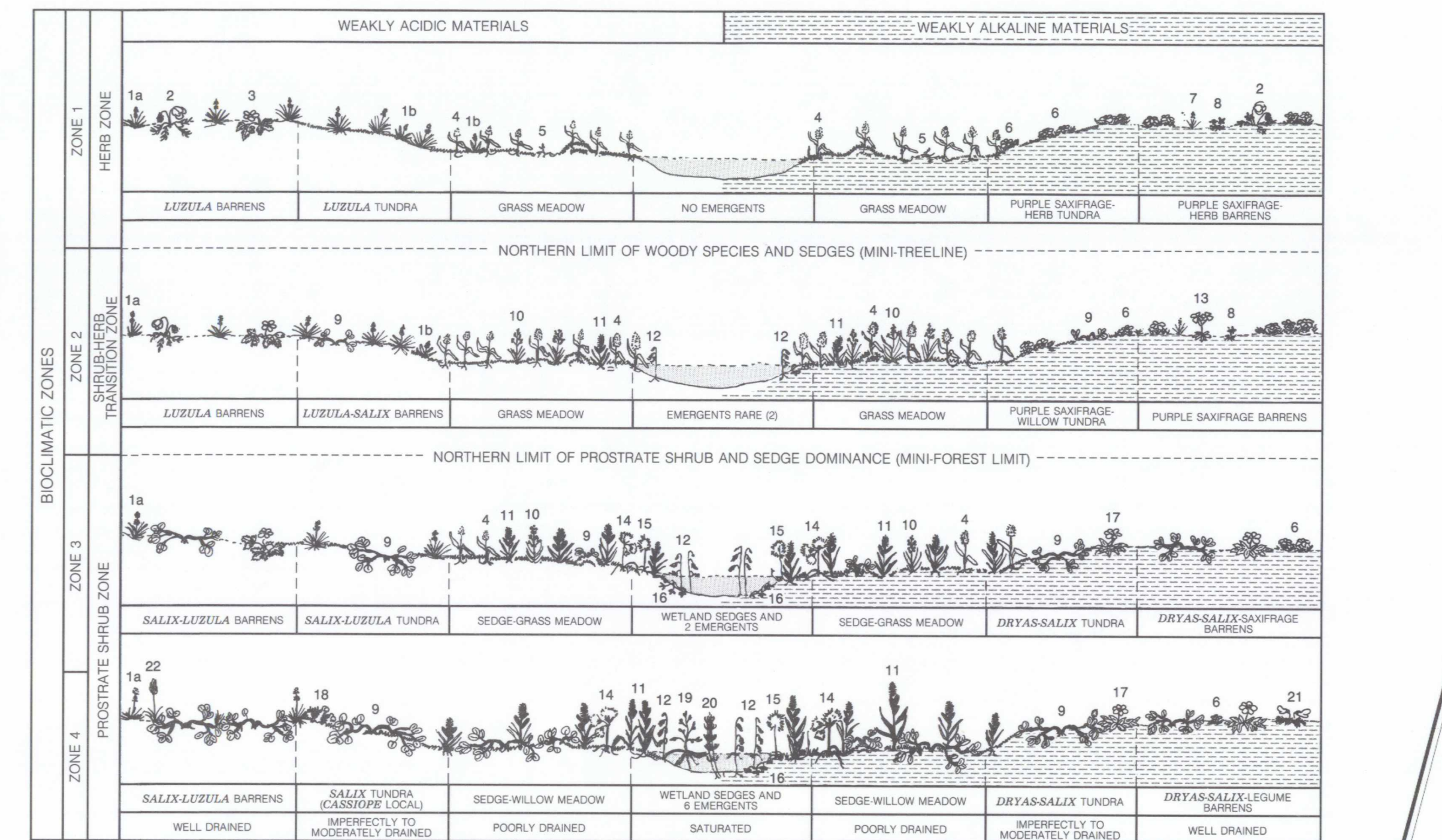
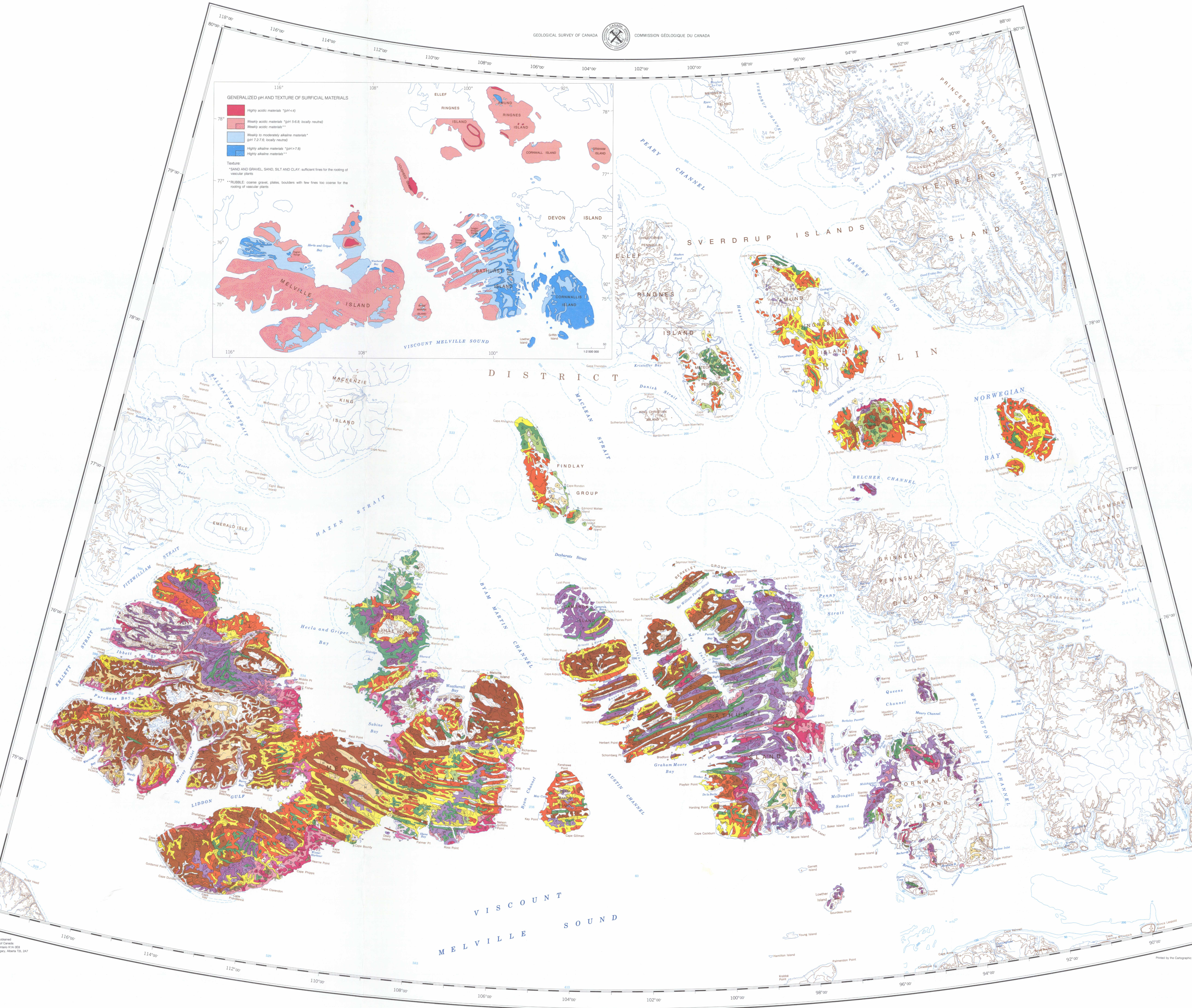
The climate of the high Arctic region... The vegetation in the region is a result of local conditions and is not necessarily representative of the entire region.

INFLUENCE OF CLIMATE ON VEGETATION PATTERNS

The climate of the high Arctic region... The vegetation in the region is a result of local conditions and is not necessarily representative of the entire region.

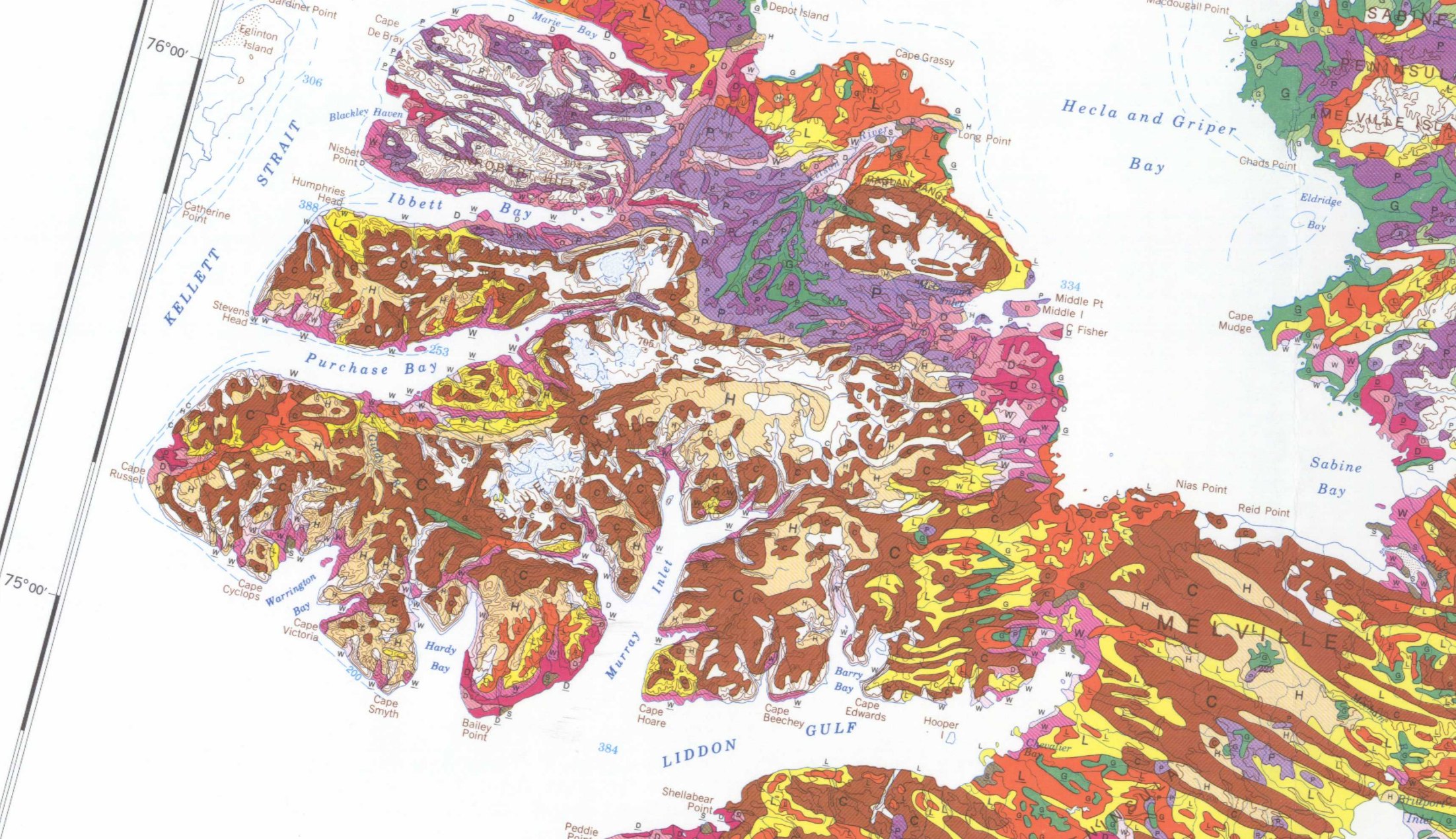
INFLUENCE OF CLIMATE ON VEGETATION PATTERNS

The climate of the high Arctic region... The vegetation in the region is a result of local conditions and is not necessarily representative of the entire region.



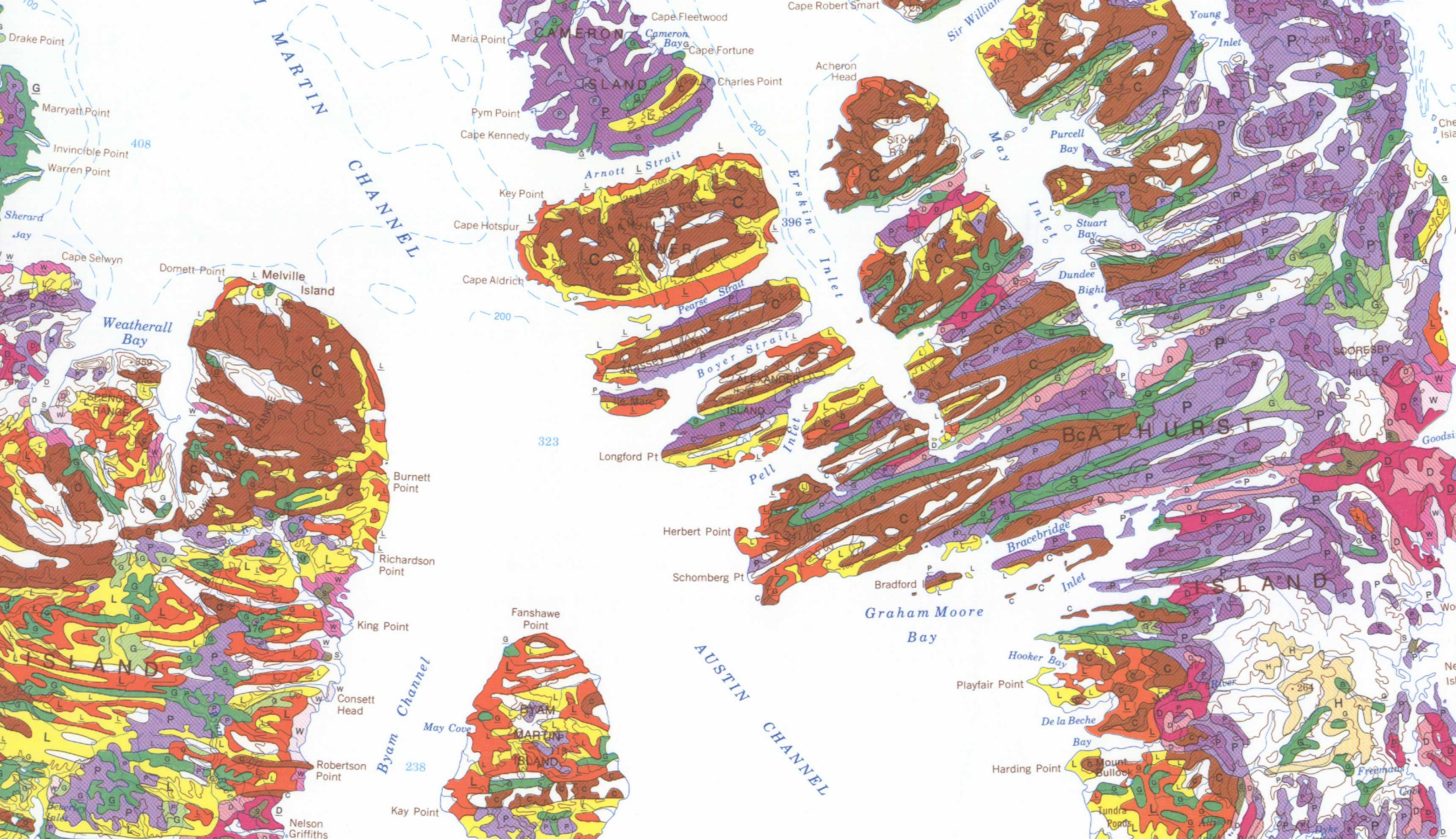
Categories for each vegetation zone. The materials in each case are a generalization. Species illustrated include:

- 1. *Luzula confusa*
- 2. *Phragmites australis*
- 3. *Poa abbreviata*
- 4. *Poa pratensis*
- 5. *Poa annua*
- 6. *Poa trivialis*
- 7. *Poa annua*
- 8. *Poa annua*
- 9. *Poa annua*
- 10. *Poa annua*
- 11. *Poa annua*
- 12. *Poa annua*
- 13. *Poa annua*
- 14. *Poa annua*
- 15. *Poa annua*
- 16. *Poa annua*
- 17. *Poa annua*
- 18. *Poa annua*



Categories for each vegetation zone. The materials in each case are a generalization. Species illustrated include:

- 1. *Luzula confusa*
- 2. *Phragmites australis*
- 3. *Poa abbreviata*
- 4. *Poa pratensis*
- 5. *Poa annua*
- 6. *Poa trivialis*
- 7. *Poa annua*
- 8. *Poa annua*
- 9. *Poa annua*
- 10. *Poa annua*
- 11. *Poa annua*
- 12. *Poa annua*
- 13. *Poa annua*
- 14. *Poa annua*
- 15. *Poa annua*
- 16. *Poa annua*
- 17. *Poa annua*
- 18. *Poa annua*



Categories for each vegetation zone. The materials in each case are a generalization. Species illustrated include:

- 1. *Luzula confusa*
- 2. *Phragmites australis*
- 3. *Poa abbreviata*
- 4. *Poa pratensis*
- 5. *Poa annua*
- 6. *Poa trivialis*
- 7. *Poa annua*
- 8. *Poa annua*
- 9. *Poa annua*
- 10. *Poa annua*
- 11. *Poa annua*
- 12. *Poa annua*
- 13. *Poa annua*
- 14. *Poa annua*
- 15. *Poa annua*
- 16. *Poa annua*
- 17. *Poa annua*
- 18. *Poa annua*



Categories for each vegetation zone. The materials in each case are a generalization. Species illustrated include:

- 1. *Luzula confusa*
- 2. *Phragmites australis*
- 3. *Poa abbreviata*
- 4. *Poa pratensis*
- 5. *Poa annua*
- 6. *Poa trivialis*
- 7. *Poa annua*
- 8. *Poa annua*
- 9. *Poa annua*
- 10. *Poa annua*
- 11. *Poa annua*
- 12. *Poa annua*
- 13. *Poa annua*
- 14. *Poa annua*
- 15. *Poa annua*
- 16. *Poa annua*
- 17. *Poa annua*
- 18. *Poa annua*

BIOTIC COMMUNITIES	VEGETATION TYPES	ASSOCIATED SURFICIAL MATERIALS AND DRAINAGE CHARACTERISTICS	BIOTIC ZONES			
			ZONE 4	ZONE 3	ZONE 2	ZONE 1
LOWLAND COMMUNITIES	BROWN MEADOW	Both related to poorly drained... (text continues)	Sedge-white meadow... (text continues)	Sedge meadow... (text continues)	Grass meadow... (text continues)	Grass meadow... (text continues)
GRASSLAND COMMUNITIES	GRASS MEADOW	Soils related to poorly drained... (text continues)	Local in middle of sedge meadows... (text continues)	Local more common on materials... (text continues)	Grass meadow... (text continues)	Grass meadow... (text continues)
GRASSLAND COMMUNITIES	GRASS BARENESS	Moderately to well drained... (text continues)	Local, generally confined to recently... (text continues)	Local, generally limited to recently... (text continues)	Grass meadow... (text continues)	Grass meadow... (text continues)
GRASSLAND COMMUNITIES	LOOSELY TUNDRA	Moderately to imperfectly drained... (text continues)	Plains in Zone 2; willow present... (text continues)	Local in Zone 2; willow present... (text continues)	Grass meadow... (text continues)	Grass meadow... (text continues)
GRASSLAND COMMUNITIES	LOOSELY BARENESS	Moderately to well drained... (text continues)	Rare in Zone 2; willow present... (text continues)	Local in Zone 2; willow present... (text continues)	Grass meadow... (text continues)	Grass meadow... (text continues)
GRASSLAND COMMUNITIES	DRYAS-SALIX TUNDRA	Moderately to imperfectly drained... (text continues)	Dryas-Salix tundra... (text continues)	Dwarf shrub tundra... (text continues)	Grass meadow... (text continues)	Grass meadow... (text continues)
GRASSLAND COMMUNITIES	DRYAS-SALIX BARENESS	Moderately to well drained... (text continues)	Dryas-Salix bareness... (text continues)	Dwarf shrub tundra... (text continues)	Grass meadow... (text continues)	Grass meadow... (text continues)
DWARF SHRUB COMMUNITIES	SALIX TUNDRA	Moderately to imperfectly drained... (text continues)	Salix tundra... (text continues)	Willow tundra... (text continues)	Grass meadow... (text continues)	Grass meadow... (text continues)
DWARF SHRUB COMMUNITIES	SALIX BARENESS	Moderately to well drained... (text continues)	Salix bareness... (text continues)	Willow bareness... (text continues)	Grass meadow... (text continues)	Grass meadow... (text continues)
MELLOW COMMUNITIES	PURPLE SAFFRON TUNDRA	Moderately to imperfectly drained... (text continues)	Local in places with... (text continues)	Local in areas where snow... (text continues)	Purple saffron tundra... (text continues)	Purple saffron tundra... (text continues)
MELLOW COMMUNITIES	PURPLE SAFFRON BARENESS	Moderately to well drained... (text continues)	Local in places with... (text continues)	Local in areas where snow... (text continues)	Purple saffron bareness... (text continues)	Purple saffron bareness... (text continues)
MELLOW COMMUNITIES	HEB BARENESS	Moderately to well drained... (text continues)	Local, generally absent... (text continues)	Local in areas of... (text continues)	Heb bareness... (text continues)	Heb bareness... (text continues)
LOWLAND COMMUNITIES	CRYPTOGAMIC BARENESS	Imperfectly to well drained... (text continues)	Local, wherever neutral... (text continues)	Local, as in Zone 4... (text continues)	Cryptogamic bareness... (text continues)	Cryptogamic bareness... (text continues)
MELLOW COMMUNITIES	GLACIER ICE	Not present	Absent	Absent	Glacier ice... (text continues)	Glacier ice... (text continues)
MELLOW COMMUNITIES	UNDEVELOPED AREA	All drainage regions... (text continues)	Restricted to alluvial fans... (text continues)	Local, only on pure... (text continues)	Undeveloped area... (text continues)	Undeveloped area... (text continues)

