

SYMBOLS

GENERAL

- 1. Boundary lines (solid, dashed, dotted, etc.)
- 2. Fault lines (solid, dashed, etc.)
- 3. Strike-slip faults (solid, dashed, etc.)
- 4. Unconformities (solid, dashed, etc.)
- 5. Tectonic features (solid, dashed, etc.)
- 6. Other symbols (solid, dashed, etc.)

STRATIGRAPHIC

- 1. Symbols for geological units (solid, dashed, etc.)
- 2. Symbols for geological units (solid, dashed, etc.)
- 3. Symbols for geological units (solid, dashed, etc.)
- 4. Symbols for geological units (solid, dashed, etc.)
- 5. Symbols for geological units (solid, dashed, etc.)
- 6. Symbols for geological units (solid, dashed, etc.)
- 7. Symbols for geological units (solid, dashed, etc.)
- 8. Symbols for geological units (solid, dashed, etc.)
- 9. Symbols for geological units (solid, dashed, etc.)
- 10. Symbols for geological units (solid, dashed, etc.)
- 11. Symbols for geological units (solid, dashed, etc.)
- 12. Symbols for geological units (solid, dashed, etc.)
- 13. Symbols for geological units (solid, dashed, etc.)
- 14. Symbols for geological units (solid, dashed, etc.)
- 15. Symbols for geological units (solid, dashed, etc.)
- 16. Symbols for geological units (solid, dashed, etc.)
- 17. Symbols for geological units (solid, dashed, etc.)
- 18. Symbols for geological units (solid, dashed, etc.)
- 19. Symbols for geological units (solid, dashed, etc.)
- 20. Symbols for geological units (solid, dashed, etc.)
- 21. Symbols for geological units (solid, dashed, etc.)
- 22. Symbols for geological units (solid, dashed, etc.)
- 23. Symbols for geological units (solid, dashed, etc.)
- 24. Symbols for geological units (solid, dashed, etc.)
- 25. Symbols for geological units (solid, dashed, etc.)
- 26. Symbols for geological units (solid, dashed, etc.)
- 27. Symbols for geological units (solid, dashed, etc.)
- 28. Symbols for geological units (solid, dashed, etc.)
- 29. Symbols for geological units (solid, dashed, etc.)
- 30. Symbols for geological units (solid, dashed, etc.)
- 31. Symbols for geological units (solid, dashed, etc.)
- 32. Symbols for geological units (solid, dashed, etc.)
- 33. Symbols for geological units (solid, dashed, etc.)
- 34. Symbols for geological units (solid, dashed, etc.)
- 35. Symbols for geological units (solid, dashed, etc.)
- 36. Symbols for geological units (solid, dashed, etc.)
- 37. Symbols for geological units (solid, dashed, etc.)
- 38. Symbols for geological units (solid, dashed, etc.)
- 39. Symbols for geological units (solid, dashed, etc.)
- 40. Symbols for geological units (solid, dashed, etc.)
- 41. Symbols for geological units (solid, dashed, etc.)
- 42. Symbols for geological units (solid, dashed, etc.)
- 43. Symbols for geological units (solid, dashed, etc.)
- 44. Symbols for geological units (solid, dashed, etc.)
- 45. Symbols for geological units (solid, dashed, etc.)
- 46. Symbols for geological units (solid, dashed, etc.)
- 47. Symbols for geological units (solid, dashed, etc.)
- 48. Symbols for geological units (solid, dashed, etc.)
- 49. Symbols for geological units (solid, dashed, etc.)
- 50. Symbols for geological units (solid, dashed, etc.)
- 51. Symbols for geological units (solid, dashed, etc.)
- 52. Symbols for geological units (solid, dashed, etc.)
- 53. Symbols for geological units (solid, dashed, etc.)
- 54. Symbols for geological units (solid, dashed, etc.)
- 55. Symbols for geological units (solid, dashed, etc.)
- 56. Symbols for geological units (solid, dashed, etc.)
- 57. Symbols for geological units (solid, dashed, etc.)
- 58. Symbols for geological units (solid, dashed, etc.)
- 59. Symbols for geological units (solid, dashed, etc.)
- 60. Symbols for geological units (solid, dashed, etc.)
- 61. Symbols for geological units (solid, dashed, etc.)
- 62. Symbols for geological units (solid, dashed, etc.)
- 63. Symbols for geological units (solid, dashed, etc.)
- 64. Symbols for geological units (solid, dashed, etc.)
- 65. Symbols for geological units (solid, dashed, etc.)
- 66. Symbols for geological units (solid, dashed, etc.)
- 67. Symbols for geological units (solid, dashed, etc.)
- 68. Symbols for geological units (solid, dashed, etc.)
- 69. Symbols for geological units (solid, dashed, etc.)
- 70. Symbols for geological units (solid, dashed, etc.)
- 71. Symbols for geological units (solid, dashed, etc.)
- 72. Symbols for geological units (solid, dashed, etc.)
- 73. Symbols for geological units (solid, dashed, etc.)
- 74. Symbols for geological units (solid, dashed, etc.)
- 75. Symbols for geological units (solid, dashed, etc.)
- 76. Symbols for geological units (solid, dashed, etc.)
- 77. Symbols for geological units (solid, dashed, etc.)
- 78. Symbols for geological units (solid, dashed, etc.)
- 79. Symbols for geological units (solid, dashed, etc.)
- 80. Symbols for geological units (solid, dashed, etc.)
- 81. Symbols for geological units (solid, dashed, etc.)
- 82. Symbols for geological units (solid, dashed, etc.)
- 83. Symbols for geological units (solid, dashed, etc.)
- 84. Symbols for geological units (solid, dashed, etc.)
- 85. Symbols for geological units (solid, dashed, etc.)
- 86. Symbols for geological units (solid, dashed, etc.)
- 87. Symbols for geological units (solid, dashed, etc.)
- 88. Symbols for geological units (solid, dashed, etc.)
- 89. Symbols for geological units (solid, dashed, etc.)
- 90. Symbols for geological units (solid, dashed, etc.)
- 91. Symbols for geological units (solid, dashed, etc.)
- 92. Symbols for geological units (solid, dashed, etc.)
- 93. Symbols for geological units (solid, dashed, etc.)
- 94. Symbols for geological units (solid, dashed, etc.)
- 95. Symbols for geological units (solid, dashed, etc.)
- 96. Symbols for geological units (solid, dashed, etc.)
- 97. Symbols for geological units (solid, dashed, etc.)
- 98. Symbols for geological units (solid, dashed, etc.)
- 99. Symbols for geological units (solid, dashed, etc.)
- 100. Symbols for geological units (solid, dashed, etc.)

PROPERTY INFORMATION

SCALE 1:50,000

ONE THOUSAND METERS

QUADRANGLE OF MILE METERS

SCALE 1:50,000

SCALE 1:50,000

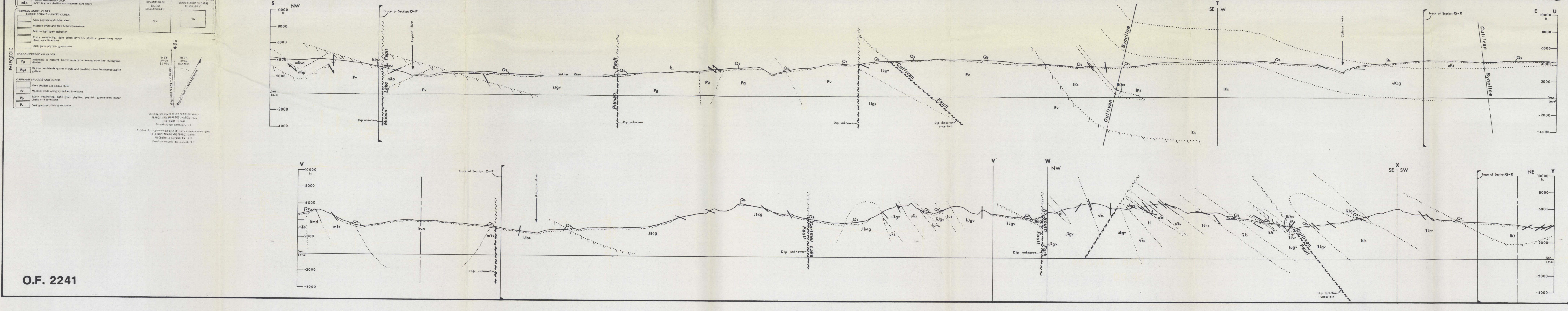
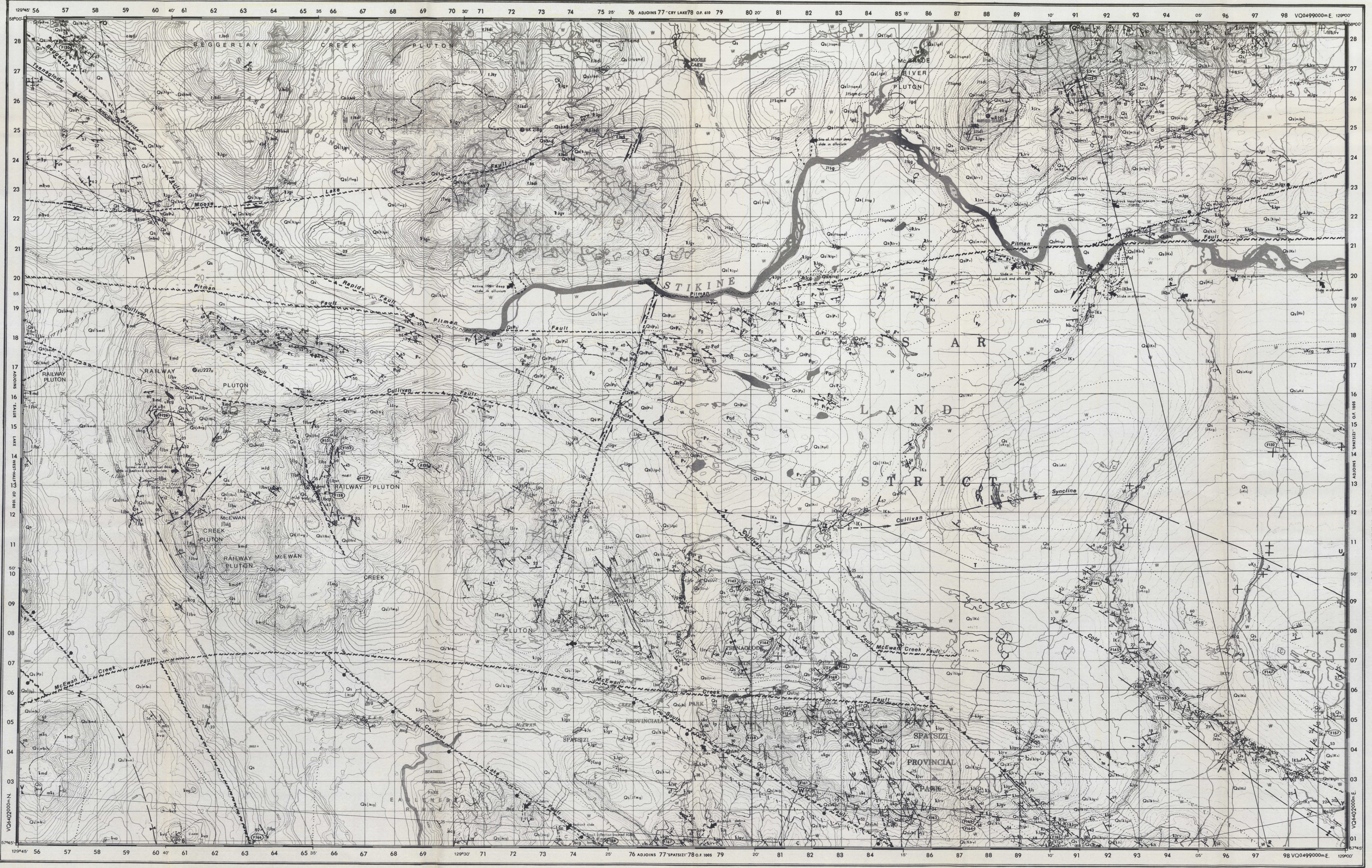


TABLE 1
 PALEONTOLOGY & PALYNOLOGY, EALUE LAKE EAST-HALF (104H/13E) & CULLIVAN CREEK (104H/14)

Map No.	CSC Loc. No.	UTM Coordinates	Elev. in feet	Rock Unit	Age (Initials of Paleontologist)
SUSTUT GROUP					
Brothers Peak Formation					
F132	C-112039	VQ0497850 VQ6414250	3680	u/c	Late Cretaceous, Early Maastichtian (AR.S)
F141	C-112041	VQ0491800 VQ6409600	3600	u/cg	Late Cretaceous, Early or Middle Campanian (AR.S)
F147	C-112037	VQ0497700 VQ6406700	5075	u/cg	Late Cretaceous, Early or Middle Campanian (AR.S)
Tango Creek Formation					
F145	C-112040	VQ0492850 VQ6407350	3600	IKs	Early Cretaceous, Middle or Late Albian (AR.S)
F151	C-112035	VQ0493350 VQ6406250	3375	IKs	Early Cretaceous, Middle or Late Albian (AR.S)
F153	C-112035	VQ0494200 VQ6407300	3350	IKs	Early Cretaceous, Middle or Late Albian (AR.S)
F157	C-112036	VQ0493950 VQ6406600	4700	IKs	Late Cretaceous, Coniacian to Santonian (AR.S)
F165	C-112032	VQ0490500 VQ6401200	3700	IKbx	Early Cretaceous, Barremian to Early or Middle Albian, probably the latter (AR.S)
F165	C-112033	VQ0490500 VQ6401200	3700	IKbx	Early Cretaceous, Barremian to Early or Middle Albian, probably the latter (AR.S)
BOWSER LAKE GROUP					
F168 C-117102 VQ0473060 VQ6400000 4830 u/cg Middle or Late Jurassic (AR.S)					
"ROCK VOLCANICS"					
F133	C-090498	VQ0466060 VQ6414150	5675	IC	Early Jurassic, Early Toarcian (HW.T)
F135	C-090732	VQ0489190 VQ6413350	4500	13s	Early Jurassic, no older than Toarcian (HW.T)
F137	C-101928	VQ0464850 VQ6413350	4050	13g	Early Jurassic, mid-Toarcian (HW.T)
F182	C-116291	VQ0497860 VQ6409500	4250	13gc	possibly Early Jurassic (TFP)
F183	C-116292	VQ0485550 VQ6409350	4500	13gc	probably Early Jurassic (HW.T)
F184	C-116297	VQ0480750 VQ6407850	5160	13gc	Early Jurassic (HW.T)
F186	C-116299	VQ0482850 VQ6406800	4300	13gc	Early Jurassic, probably Toarcian (HW.T)
SPATSIS GROUP					
F131	C-087250	VQ0465950 VQ6414300	5375	13bs	Early Jurassic, Early Toarcian (HW.T)
F138	C-101182	VQ0463700 VQ6412750	5025	13bs	Early Jurassic, Early Toarcian (HW.T)
F135	C-101927	VQ0463700 VQ6412750	4975	13bs	Early Jurassic, latest Pliensbachian and earliest Toarcian (HW.T)
F166	C-087282	VQ0463760 VQ6401100	2650	13bs	Early Jurassic, probably Middle or Late Toarcian (HW.T)
STYHIM GROUP					
F128	C-087659	VQ0499950 VQ6415360	4630	u/c	Late Triassic, late Early to early Middle Norian (M3O)
F125	C-087655	VQ0499950 VQ6415360	4630	u/c	Late Triassic, late Early to early Middle Norian (M3O)
F155	C-116296	VQ0483650 VQ6404780	5250	u/w	Late Triassic, Late Norian, probably Amoenum zone (ETT)
F158	C-102912	VQ0480960 VQ6404950	6275	u/w	late Paleozoic or younger (M3O)
F160	C-116295	VQ0483850 VQ6404250	5900	u/w	Late Triassic, Late Norian, Amoenum Zone (ETT)
F161	C-102913	VQ0482200 VQ6402800	5700	u/w	Early Permian, Artinskian (M3O)
F162	C-116294	VQ0485600 VQ6401800	6020	u/w	Late Triassic, Late Norian, Amoenum Zone (ETT)
F167	C-117114	VQ0477700 VQ6406850	6700	u/s	Late Triassic (ETT)

*Map numbers are assigned to fossil collections in order of increasing number and letter for decreasing UTM northing.
 †Age of limestone clast in volcanic breccia of unit u/cg.
 ‡On the map, - follows barren or indeterminate fossil locality numbers

TABLE 2
 RADIO-METRIC DATING, EALUE LAKE EAST-HALF (104H/13E) & CULLIVAN CREEK (104H/14)

Map No.	UTM Easting	UTM Northing	Elev. in Feet	Rock Unit	Age & (Reference)
w1918	VQ0488000	VQ6425450	5225	13gc	1919 Ma (Gehrels et al., 1980)
a218g	VQ0482300	VQ6428950	6300	13gc	2189 Ma (Anderson, 1983)
z129a	VQ0471370	VQ6418050	2850	13g	2862 Ma? (this study)
z127a	VQ0461300	VQ6416900	3350	13gd	2722 Ma (this study)

This map has been produced from a scanned version of the original map.
 Reproduction par numérisation d'une carte sur papier.