

OPEN FILES/DOSSIERS PUBLICS

2110 JEANNE D'ARC BASIN AREA: LITHOSTRATIGRAPHY, FACIES ANALYSIS AND DIAGENETIC PROPERTIES OF THE EARLY CRETACEOUS AND LATE JURASSIC RESERVOIRS OF THE EAST NEWFOUNDLAND BASIN; Robertson Research Canada Limited.

Volume 1 - 211 p.

Volume 2 - 12 maps/cartes (A-L), 2 correlation sections (Enclosures 1 and 2), 17 data summary charts (Enclosures 3-19), 4 petrographic summary sheets (Enclosures 35-38)/deux coupes de corrélation (pièces jointes 1 et 2), 17 tableaux récapitulatifs des données (pièces jointes 3 à 9), 4 feuilles récapitulatives des données pétrographiques (pièces jointes 35 à 38)

Volume 3 - 15 core description charts (Enclosures 20-34)/15 tableaux descriptifs des carottes (pièces jointes 20 à 34)

Sales/Distributeur: Precision Microfilming Ltd., Halifax
Price/Prix \$120.00

2124 THE DEVELOPMENT OF ADVANCED TECHNOLOGY TO DISTINGUISH BETWEEN PRODUCTIVE DIAMONDIFEROUS AND BARREN DIATREMES; C.F. Mineral Research Ltd. Kelowna

Viewing/Consultation: GSC/CGC, Calgary, Vancouver, Ottawa
Sales/Distributeur: Riley's Datashare International, Calgary
Price/Prix \$137.25 (Part I photocopied; Parts II and III on microfiche)/Partie I photocopiée; Parties II et III sur microfiche or/ou \$437.25 (Parts I, II and III photocopied)/(Parties I, II et III photocopiées)

2149 OVERBURDEN DRILLING PROGRAM IN THE SAINT JOHN VALLEY AND THE BAIE DES CHALEURS COASTAL AREA OF NORTHERN NEW BRUNSWICK: TILL GEOCHEMISTRY AND BOREHOLE LOGS; M. Lamothe; 84 p.

Contribution to Canada-New-Brunswick Mineral Development Agreement 1984-1989.
Une contribution de l'entente Canada-Nouveau Brunswick sur l'exploitation minière 1984-1989.

Viewing/Consultation: Department of Natural Resources and Energy, Bathurst, Fredericton, Sussex
Sales/Distribution: Ashley Reproductions, Ottawa
Price/Prix \$12.00

Digital data on IBM-PC compatible diskettes (5 1/4") are available from GSC Publications Distribution, Ottawa for \$15.00.
Les données numériques sont disponibles sur disquette (5 1/4") compatible IBM-PC au Bureau de distribution des publications de la CGC à Ottawa pour 15,00\$.

Borehole logs are also available on 3 1/2" diskette in MACDRAW PICT format from GSC Publications Distribution, Ottawa for \$16.00.
Diagraphies également disponibles sur disquette de 3 1/2" en format MACDRAW PICT, auprès du Service de distribution des publications de la CGC, à Ottawa, au prix de 16,00\$.

2151 AIRBORNE GAMMA RAY SPECTROMETRIC COLOUR MAPS FOR SUDBURY AND DISTRICT, NORTHERN ONTARIO, 1989; R. Héty; 8 maps/cartes (1:500 000)

Sales/Distributeur: Ashley Reproductions, Ottawa
Price/Prix \$77.50

GEOLOGICAL SURVEY OF CANADA



COMMISSION GÉOLOGIQUE DU CANADA

AIRBORNE GAMMA RAY SPECTROMETER SURVEY

1989

SUDBURY AND DISTRICT NORTHERN ONTARIO

(Parts of NTS 41-1/5,6,7,10,11,12,13,14,15)

Contents include geology, magnetic and gamma ray spectrometric colour maps.

2172 GEOLOGY OF PRINCE GEORGE (EAST HALF), BRITISH COLUMBIA (93 G East); L.C. Struik, E.A. Fuller, T. Lynch; 20 p., 4 maps/cartes

Sales/Distributeur: GSC/CGC, Vancouver
Price/Prix \$10.00

2186 ADVANCE RELEASE OF HIGH RESOLUTION 1:20 000 AEROMAGNETIC VERTICAL GRADIENT, TOTAL FIELD AND VLF-EM SURVEY, FLORENCEVILLE AREA, NEW BRUNSWICK/DIFFUSION PRÉLIMINAIRE DE LEVÉS AÉROMAGNÉTIQUES DU CHAMP TOTAL, DU GRADIENT VERTICAL ET D'UN LEVÉ EM DE TYPE TBF, RÉGION DE FLORENCEVILLE, NOUVEAU-BRUNSWICK (NTS/SNRC 21J/3f, g, 5a, h; 6a-h; 11a-h); 72 sheets/feuilles

A contribution to the Canada-New Brunswick Mineral Development Agreement 1984-1989.

Contribution à l'entente Canada-Nouveau-Brunswick d'exploitation minière 1984-1989.

232 bank 735-245
Viewing/Consultation: New Brunswick, Department of Mines and Energy, Fredericton, Bathurst, Sussex
Sales/Distributeur: New Brunswick Department of Mines and Energy, Fredericton, Ashley Reproductions, Ottawa
Price/Prix \$129.00

NOTICE/AVIS

Open Files can be viewed at all Survey libraries unless otherwise indicated. Cost includes postage and handling to Canadian addresses except as noted. Please remit appropriate provincial sales tax to all sales outlets.

Les dossiers publics sont accessibles aux fins de consultation à toutes les bibliothèques de la Commission sauf avis contraire. Le coût de la livraison postale et de la manutention aux adresses canadiennes est inclus sauf s'il y a préavis. Prière d'ajouter le prix de la taxe provinciale aux points de vente.

This document was produced by scanning the original publication.

Ce document est le produit d'une numérisation par balayage de la publication originale.



Energy, Mines and Resources Canada

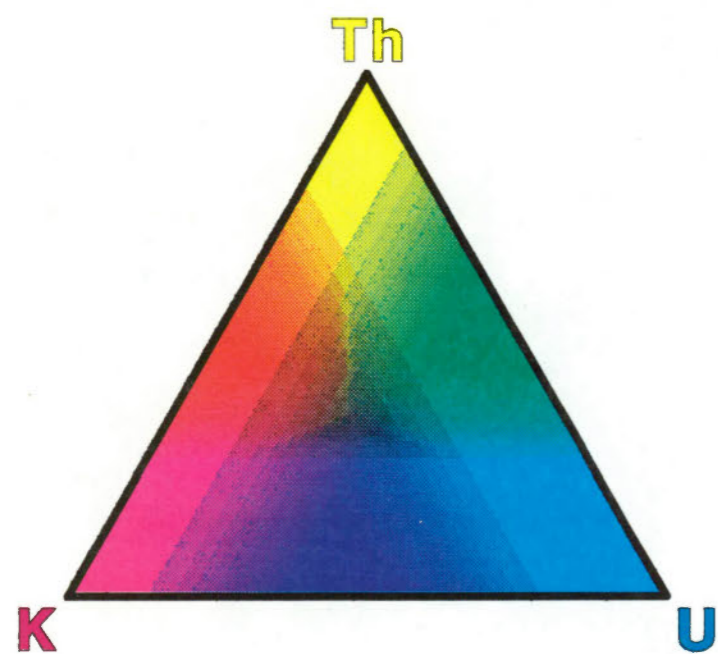
Énergie, Mines et Ressources Canada

Canada

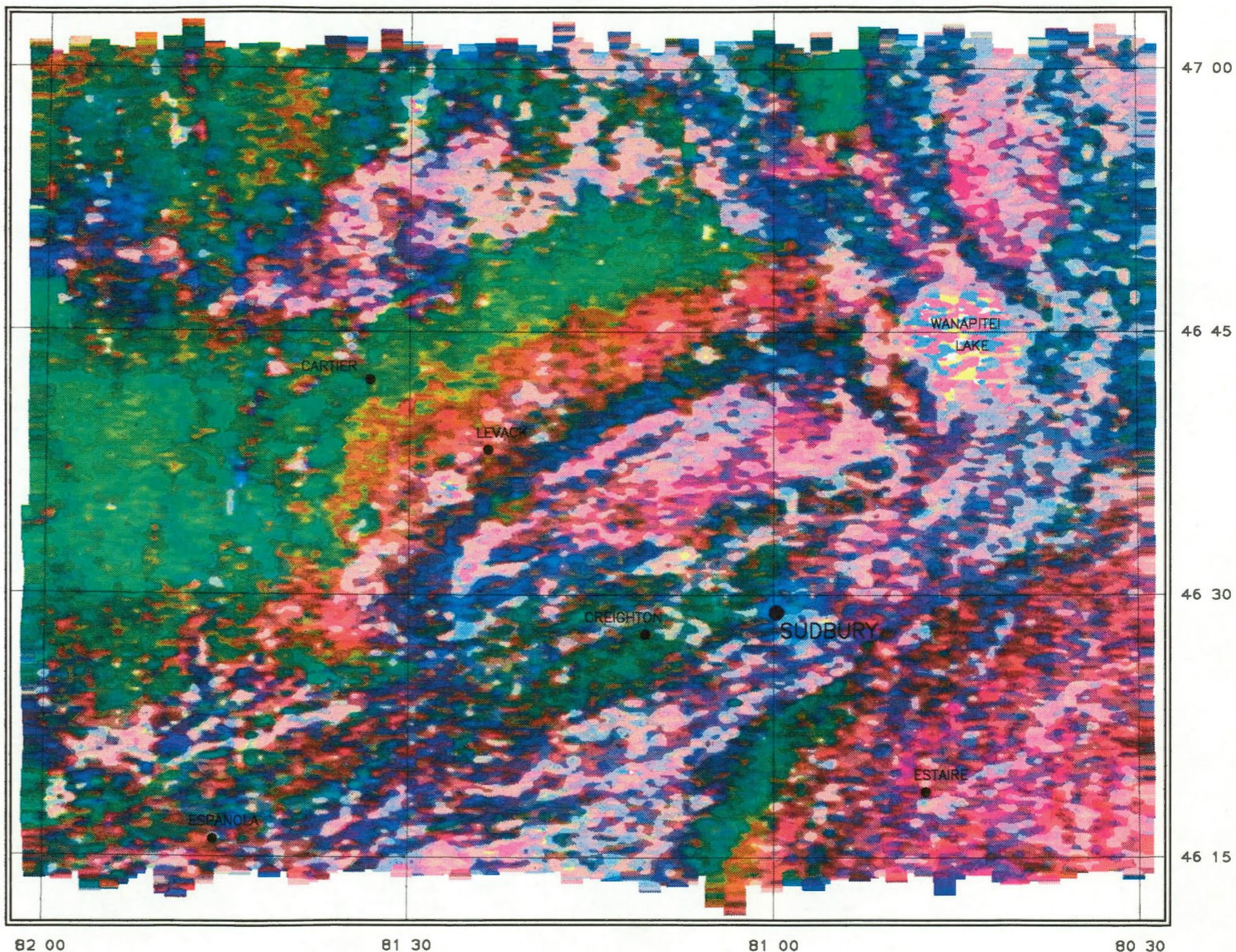
OPEN FILE
DOSSIER PUBLIC

2151

GEOLOGICAL SURVEY OF CANADA
COMMISSION GÉOLOGIQUE DU CANADA
OTTAWA



SCALE= 1 : 500 000
Line spacing = 1000 Meters



Survey flown, compiled and funded by
Airborne Geophysics Section
Mineral Resources Division
Geological Survey of Canada



Energy, Mines and
Resources Canada

Energie, Mines et
Ressources Canada

Canada

TERNARY RADIOELEMENT MAP

OPEN FILE 2151
AIRBORNE GAMMA RAY SURVEY
of

SUDBURY and DISTRICT
NORTHERN ONTARIO, 1989

compiled by R Hetu





LEGEND

SUDBURY #1-1, 1:50000

SOUTHERN AND SUPERIOR PROVINCES

PRECAMBRIAN

PROTEROZOIC

NEOHELIXIA

Ns Olivine diabase dykes (Fruit Lake)

Nq Quartz diabase

PROBOPHELIAN

ALKALIC INTRUSIONS

Pca Alkali rock - carbonatite complex

Pax Felsic breccia, lamprophyre

FELSIC FLEETING ROCKS

Pg Granite

Pqd Trondhjemite, quartz diorite

AFHERIAN

Auh Ultramafic intrusion

SUDBURY IGNEOUS COMPLEX

Age Granophyre

Abx Sill layer

Abq Quartz gabbro

Abn Norite, gabbro

WHITEWATER GROUP

ACH Chelmsford Formation

Acw Onwatin Formation

AO Upper (Black) Onaping Formation

AO Lower (Grey) Onaping Formation

AOB Basal Quartzite Breccia ("Fruit Lake Conglomerate")

Ab Nipissing diabase

Agn Felsic plutons

HURONIAN SUPERGROUP

COBALT GROUP

Ag Gordon Lake and Bar River Formations

AL Lorrain Formation

AG Gowganda Formation

GENERAL STRATIGRAPHY

AL Bruce, Espanola and Serpent Formations

HOLLAND LAKE GROUP

Ag Rainy Lake, Fergus and Muskoka Formations

ELLEST LAKE GROUP

Ag McKim Formation

AN Macanada Formation

AY Sibley Lake Formation

AC Copper Cliff Formation

AGT Stobie Formation

AE Elsie Mountain Formation

ARCHAEOZOIC OR PROTEROZOIC

ba Gabbro-syenite complexes

MELIENS

MAJOR TECTONIC PLUTONIC ROCKS

Ag quartz granodiorite

Ab quartzite, quartz diorite

GNEISS AND MIGMATITE ROCKS

Ag quartzite, granodiorite, and quartzite-syenite

Ag quartzite and quartzitic granodiorite

Ag quartzite and layered mafic-ultramafic rocks

Ag mafic gneiss and amphibolite

Ag mafic gneiss and amphibolite

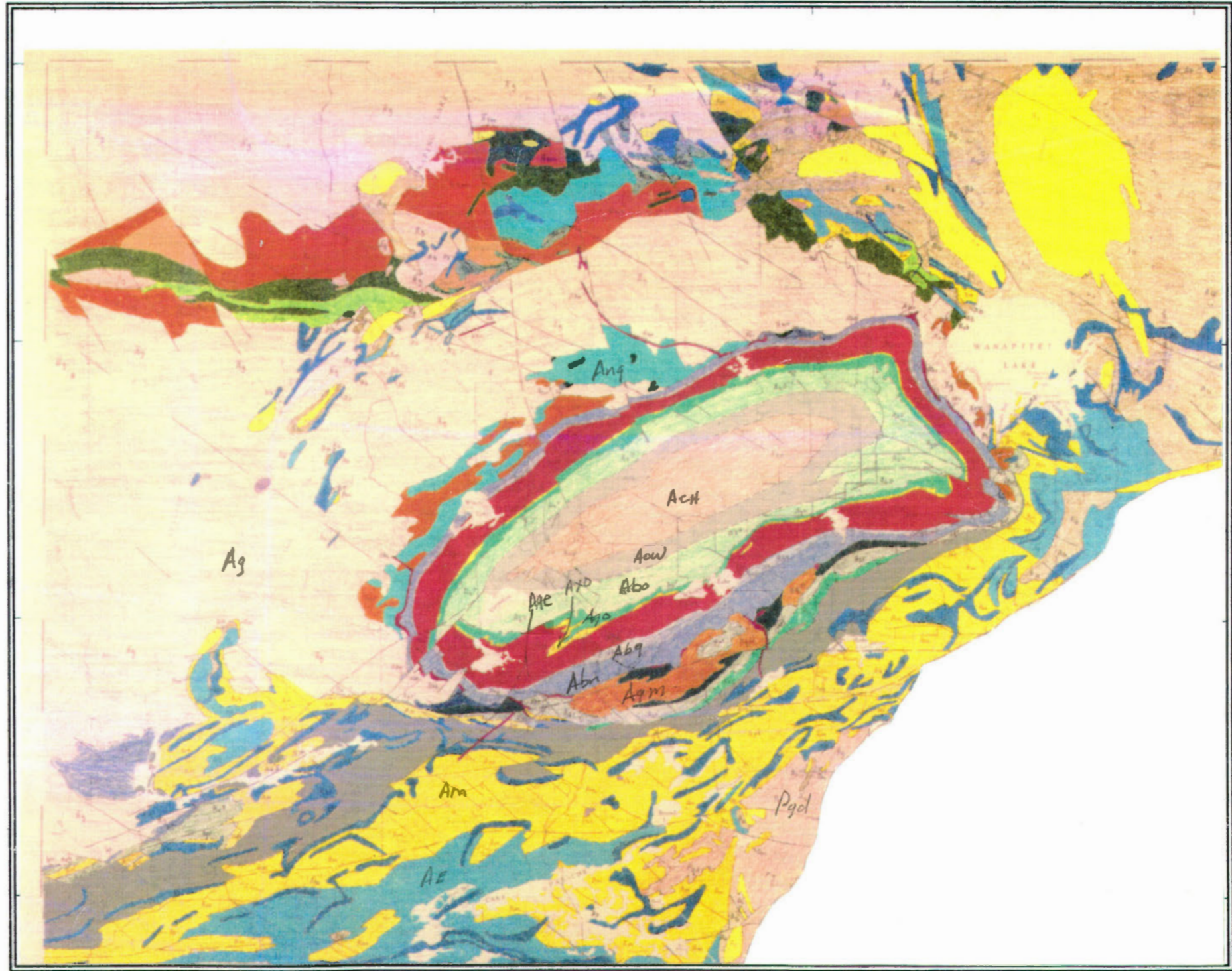
Ag mafic gneiss and amphibolite

Ag mafic gneiss and amphibolite

Ag mafic gneiss and amphibolite

Ag mafic gneiss and amphibolite

Ag mafic gneiss and amphibolite



47 00

46 45

46 30

46 15

82 00

B1 30 "PRELIMINARY" GEOLOGY MAP B1 00

80 30

Extracted from unpublished composite geology map
being prepared by K.D. Card, B.V. Sanford and A. Davidson, GSC.

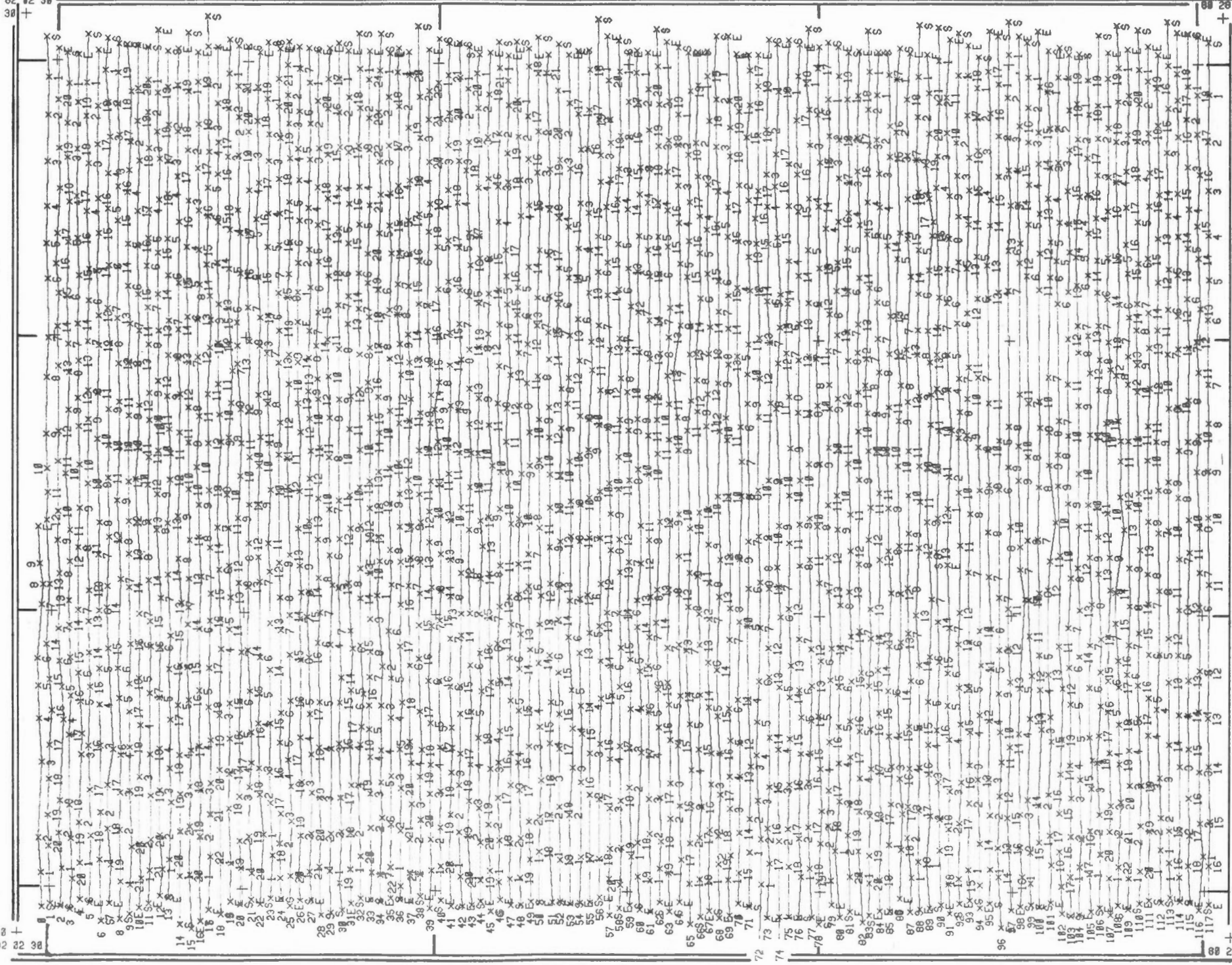
OPEN FILE 2151
AIRBORNE GAMMA RAY SURVEY
of
SUDBURY and DISTRICT
NORTHERN ONTARIO, 1989
compiled by R Hetu

Survey flown, compiled and funded by
Airborne Geophysics Section
Mineral Resources Division
Geological Survey of Canada



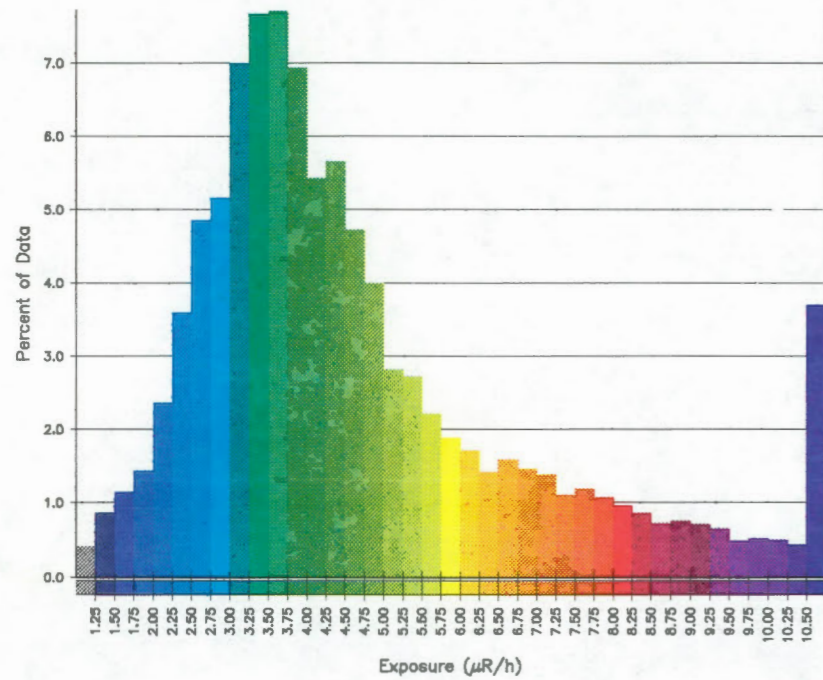
47 02 38 +

46 12 38 +

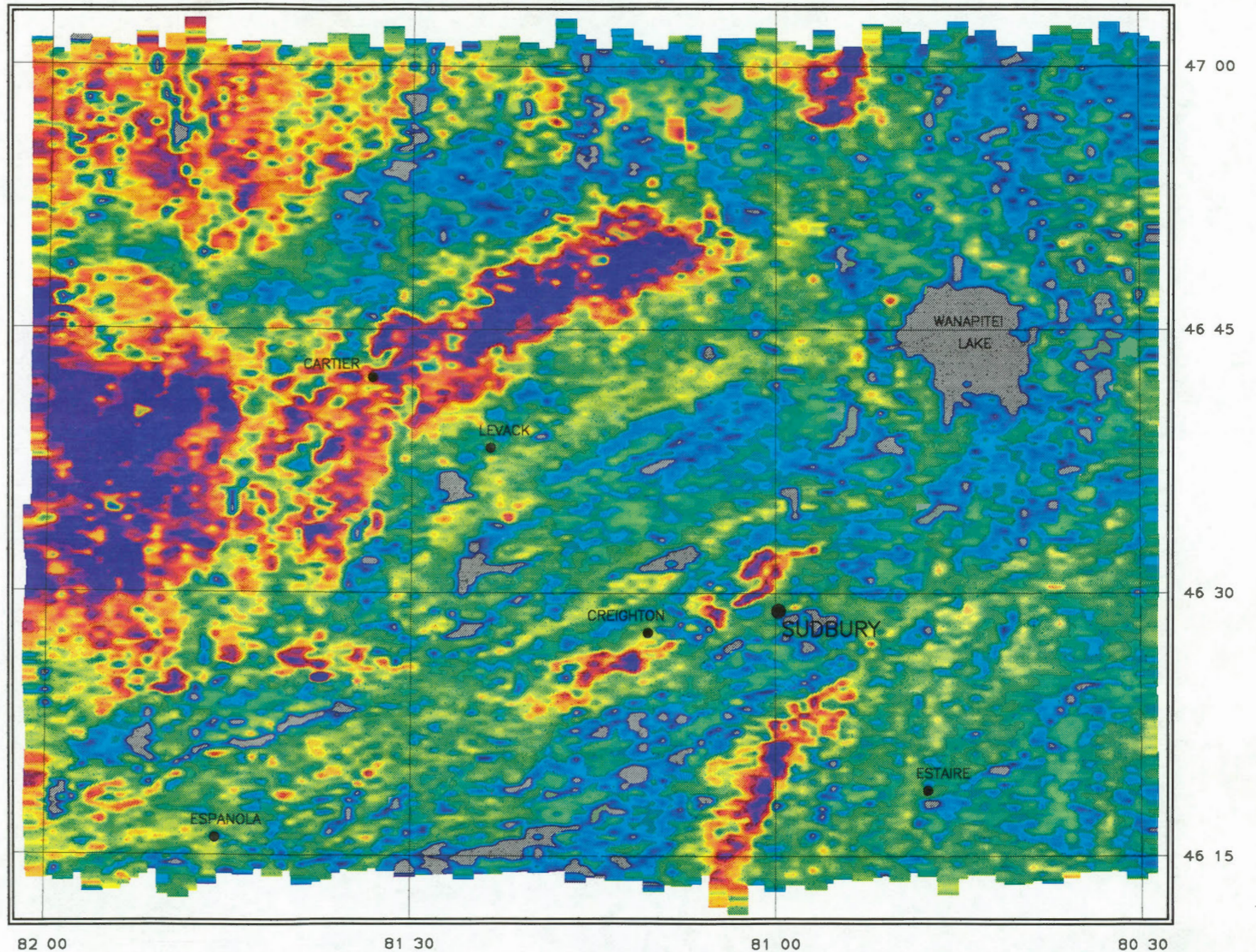


88 28 88 + 47 02 38


88 28 88 + 46 12 38



SCALE= 1 : 500 000
 Line spacing = 1000 Meters



Survey flown, compiled and funded by
 Airborne Geophysics Section
 Mineral Resources Division
 Geological Survey of Canada

 Energy, Mines and Resources Canada
 Energie, Mines et Ressources Canada



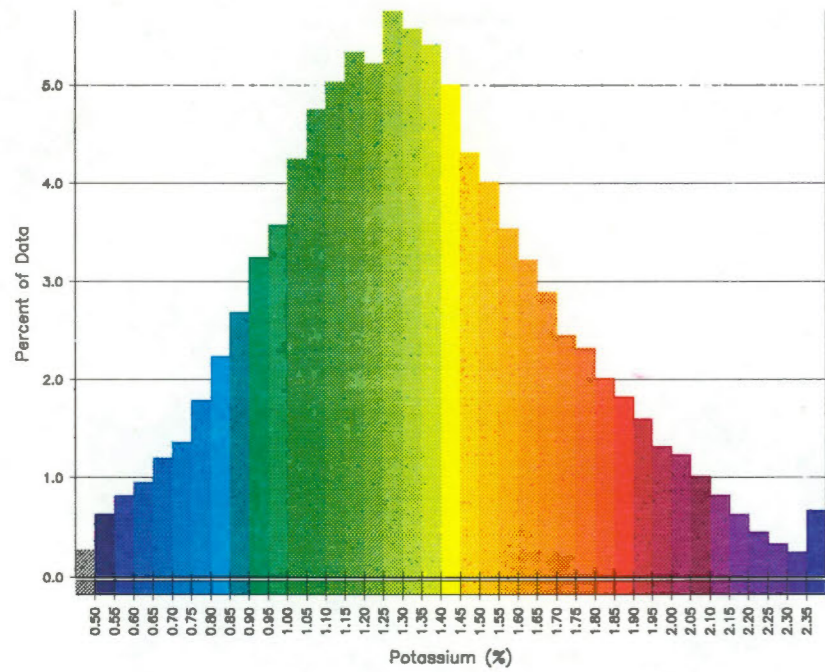
EXPOSURE ($\mu R/H$)

OPEN FILE 2151
 AIRBORNE GAMMA RAY SURVEY
 of

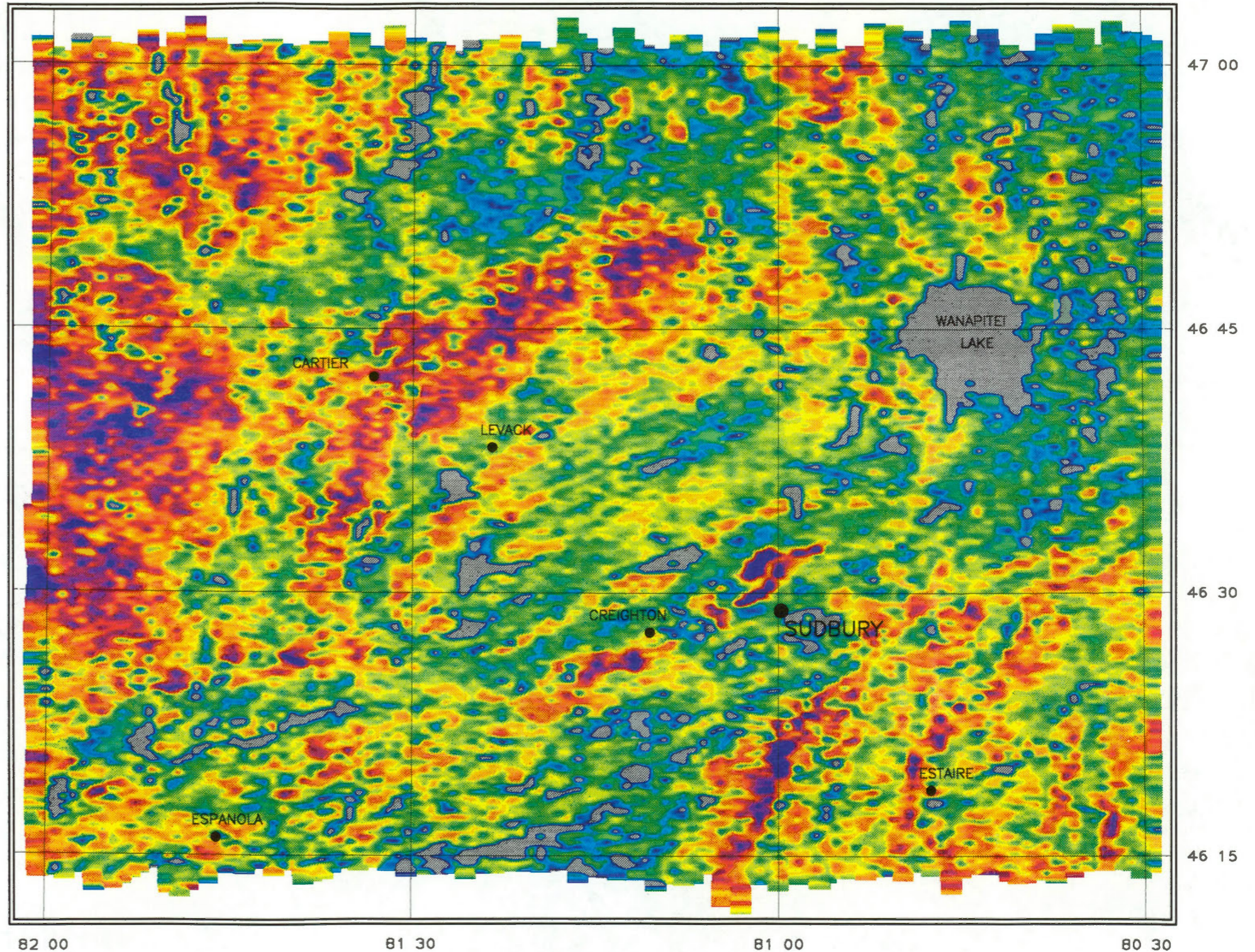
SUDBURY and DISTRICT
 NORTHERN ONTARIO, 1989

compiled by R Hetu





SCALE= 1 : 500 000
 Line spacing = 1000 Meters



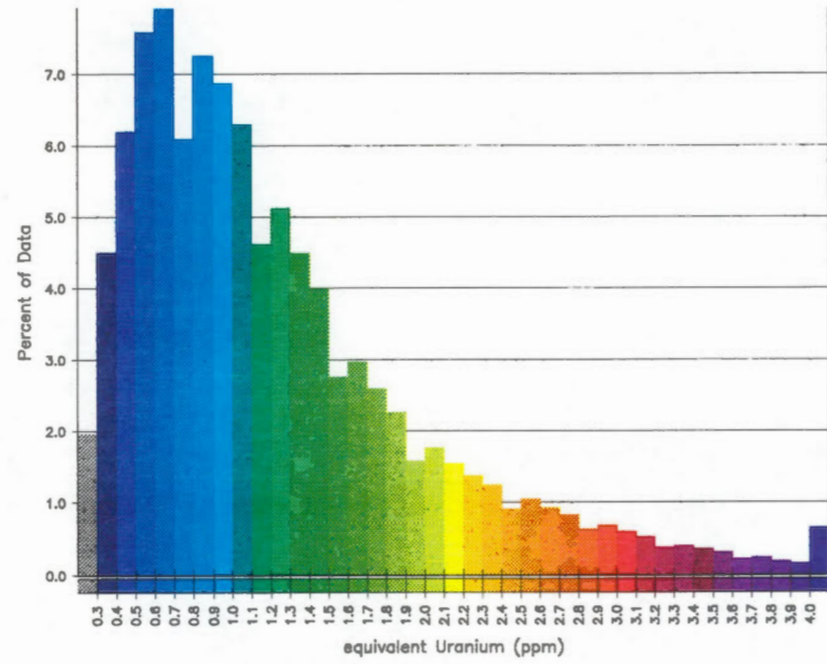
Survey flown, compiled and funded by
 Airborne Geophysics Section
 Mineral Resources Division
 Geological Survey of Canada

 Energy, Mines and Resources Canada
 Energie, Mines et Ressources Canada

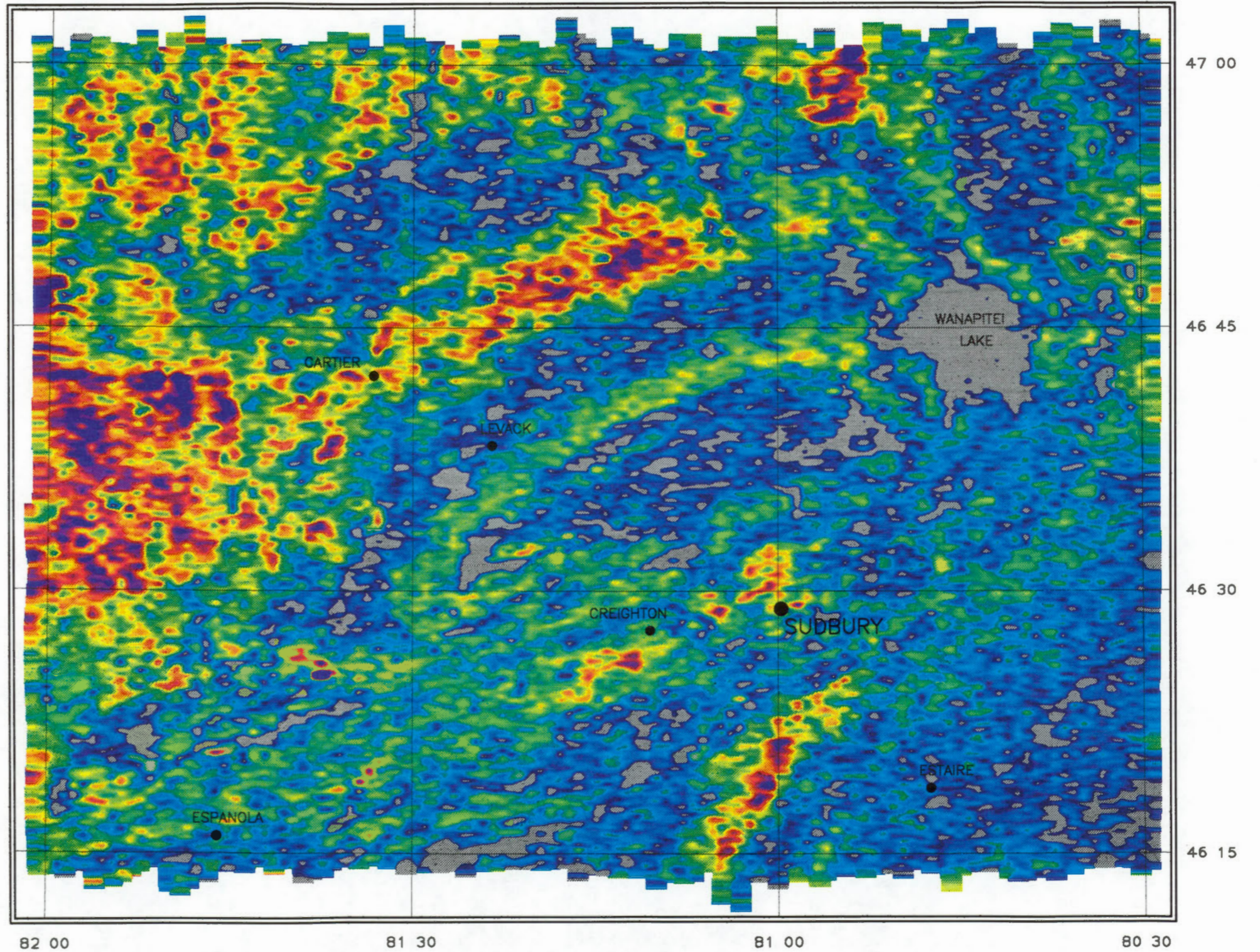


POTASSIUM (%)
 OPEN FILE 2151
 AIRBORNE GAMMA RAY SURVEY
 of
SUDBURY and DISTRICT
 NORTHERN ONTARIO, 1989
 compiled by R Hetu






SCALE= 1 : 500 000
 Line spacing = 1000 Meters



EQUIVALENT URANIUM (PPM)

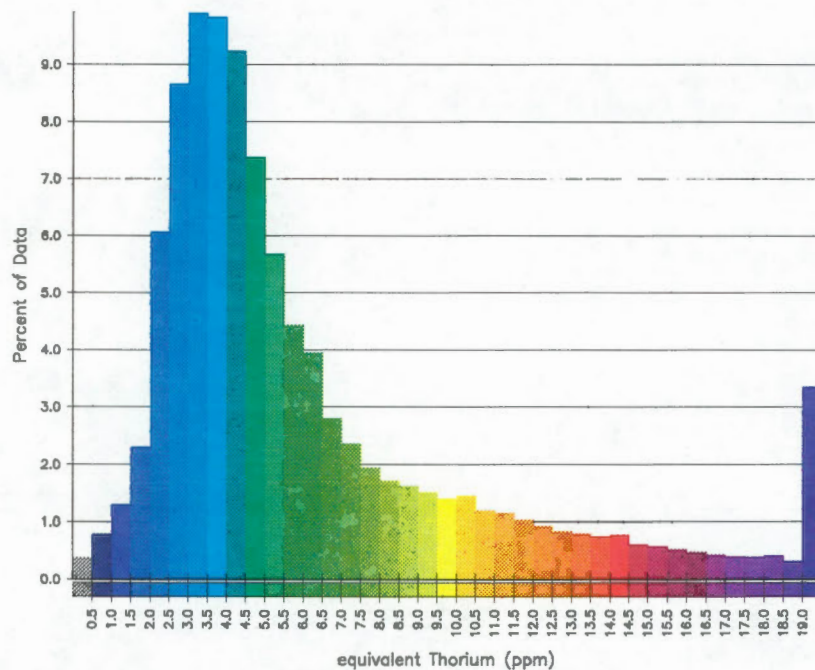
OPEN FILE 2151
 AIRBORNE GAMMA RAY SURVEY
 of
Sudbury and District
 Northern Ontario, 1989
 compiled by R Hetu

Survey flown, compiled and funded by
 Airborne Geophysics Section
 Mineral Resources Division
 Geological Survey of Canada

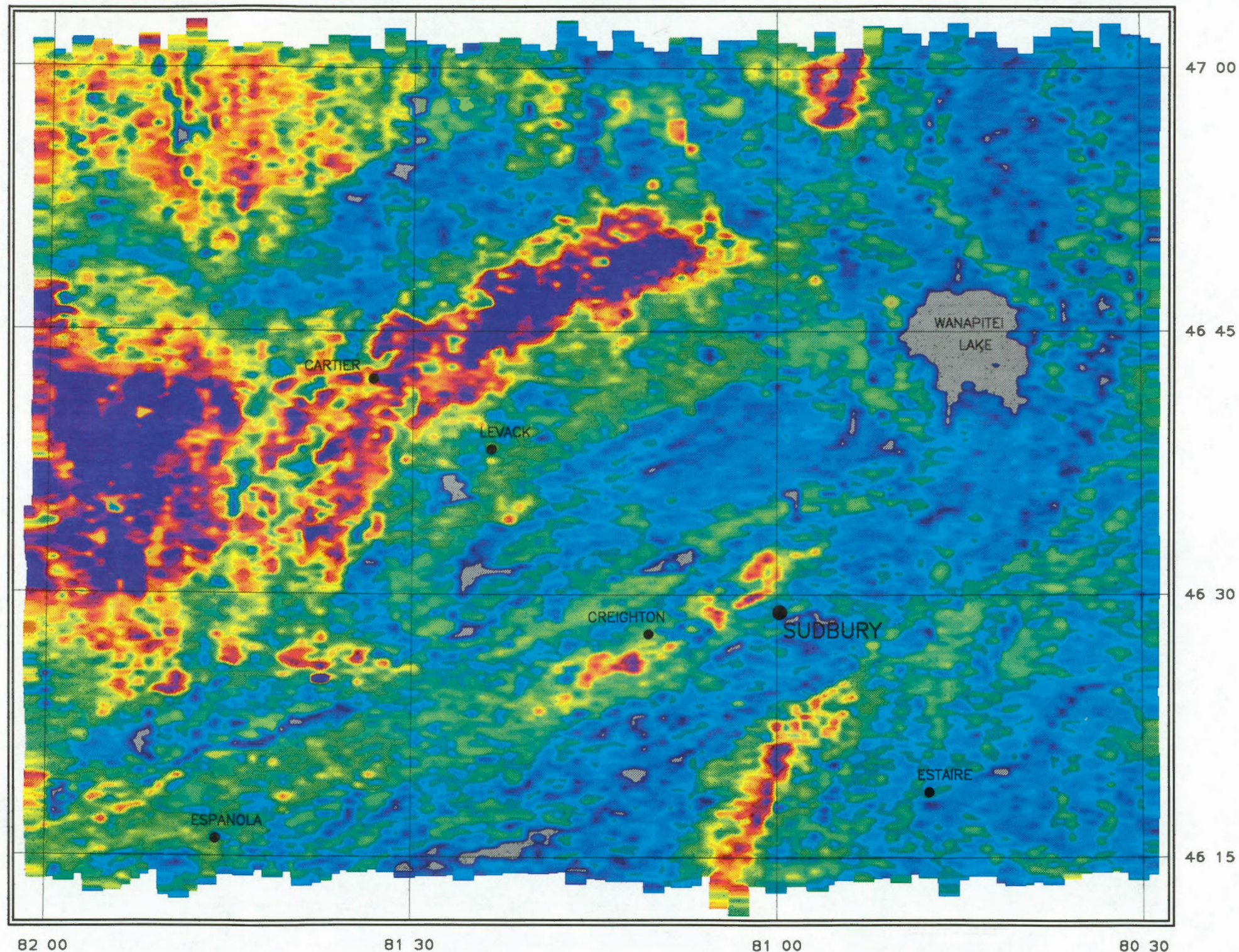
 Energy, Mines and Resources Canada
 Energie, Mines et Ressources Canada







SCALE= 1 : 500 000
Line spacing = 1000 Meters



EQUIVALENT THORIUM (PPM)

OPEN FILE 2151
AIRBORNE GAMMA RAY SURVEY
of

SUDBURY and DISTRICT
NORTHERN ONTARIO, 1989

compiled by R Hetu

Survey flown, compiled and funded by
Airborne Geophysics Section
Mineral Resources Division
Geological Survey of Canada

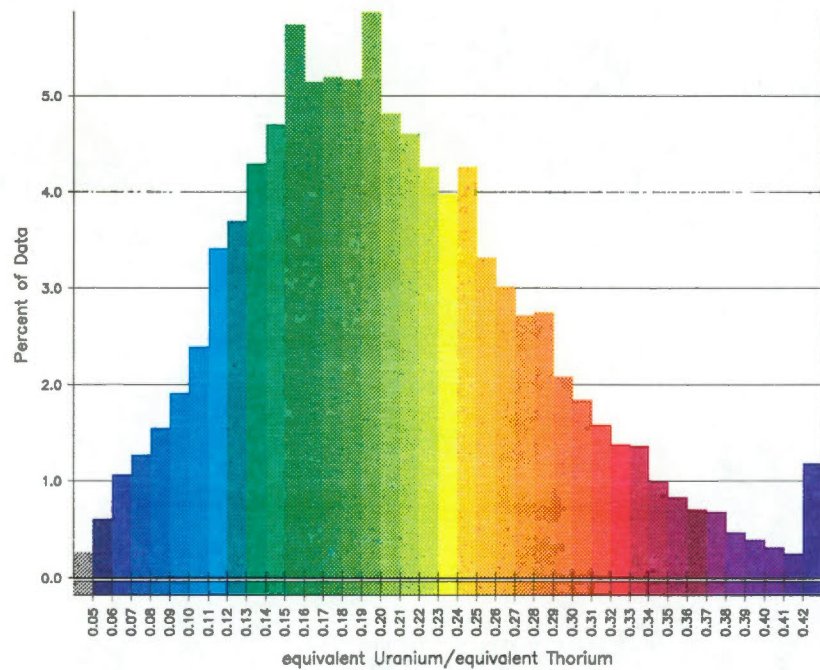


Energy, Mines and
Resources Canada

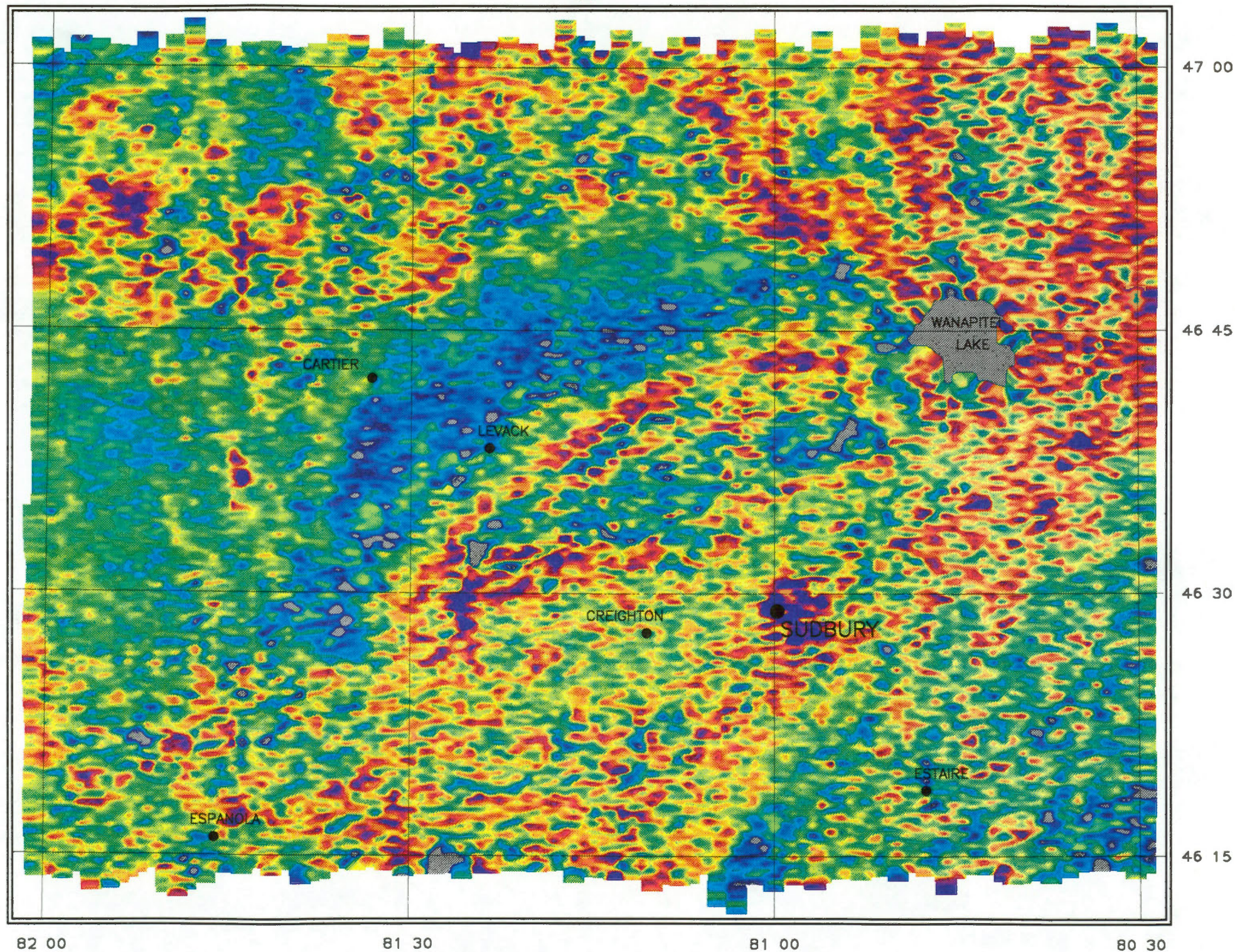
Energie, Mines et
Ressources Canada

Canada





SCALE= 1 : 500 000
 Line spacing = 1000 Meters



Survey flown, compiled and funded by
 Airborne Geophysics Section
 Mineral Resources Division
 Geological Survey of Canada



Energy, Mines and
 Resources Canada

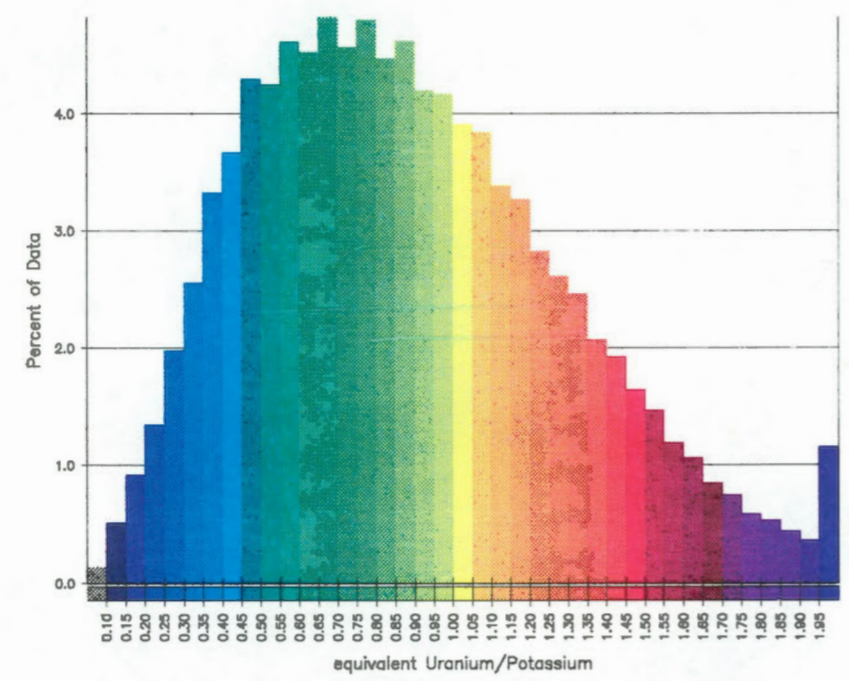
Energie, Mines et
 Ressources Canada

Canada

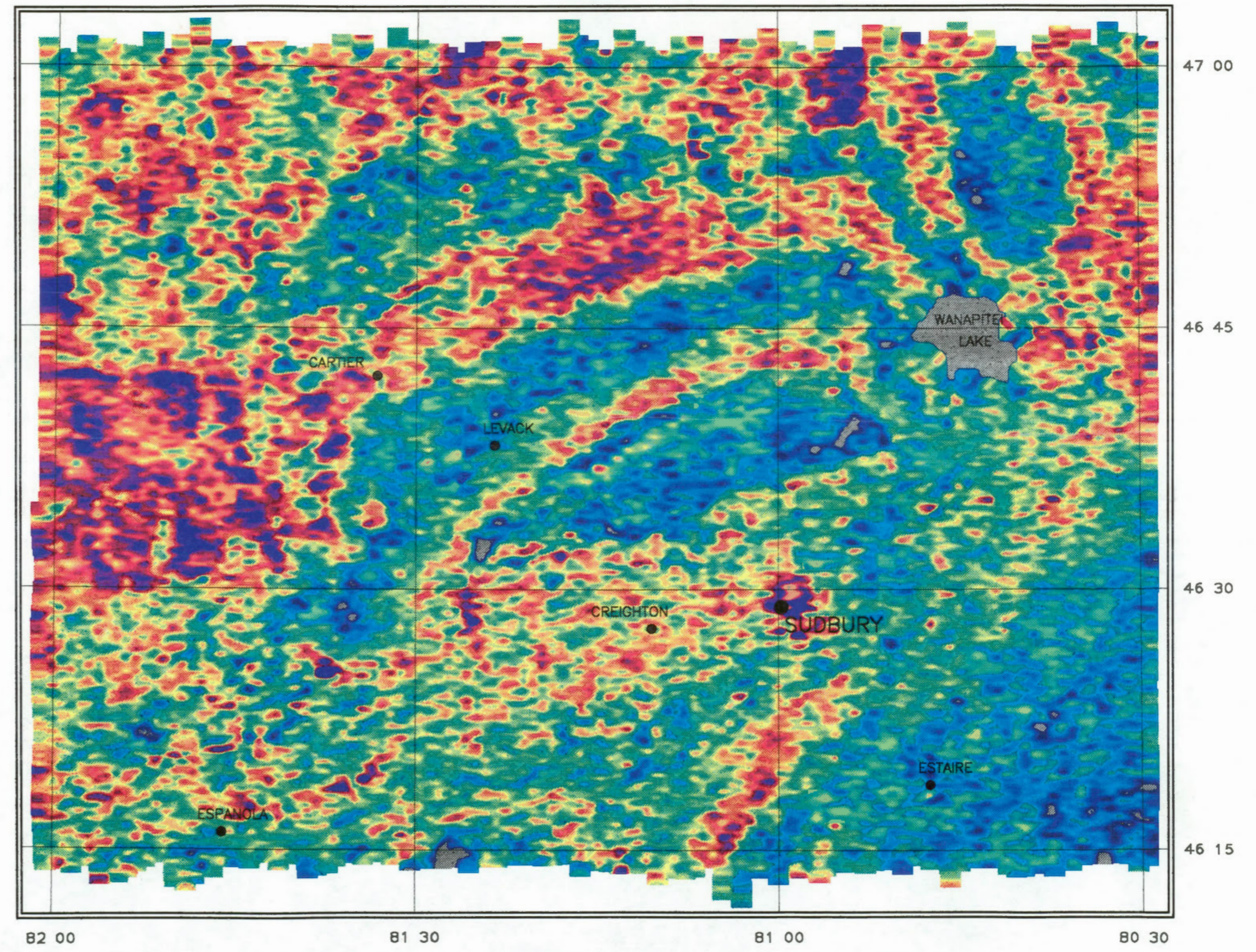
EQUIVALENT URANIUM/EQUIVALENT THORIUM

OPEN FILE 2151
 AIRBORNE GAMMA RAY SURVEY
 of
 SUDBURY and DISTRICT
 NORTHERN ONTARIO, 1989
 compiled by R Hetu





SCALE= 1 : 500 000
 Line spacing = 1000 Meters



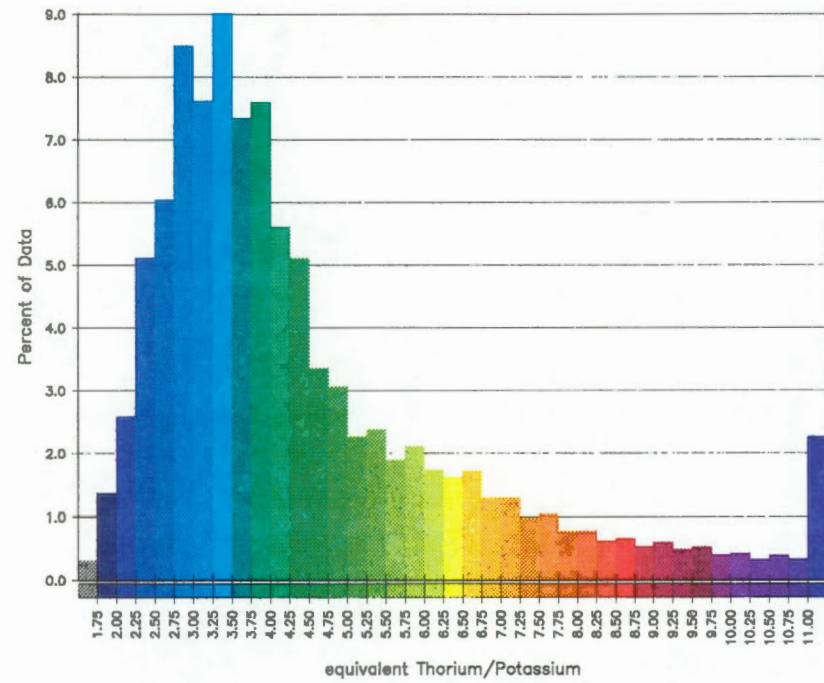
EQUIVALENT URANIUM/POTASSIUM

OPEN FILE 2151
 AIRBORNE GAMMA RAY SURVEY
 of
SUDBURY and DISTRICT
 NORTHERN ONTARIO, 1989
 compiled by R Hetu

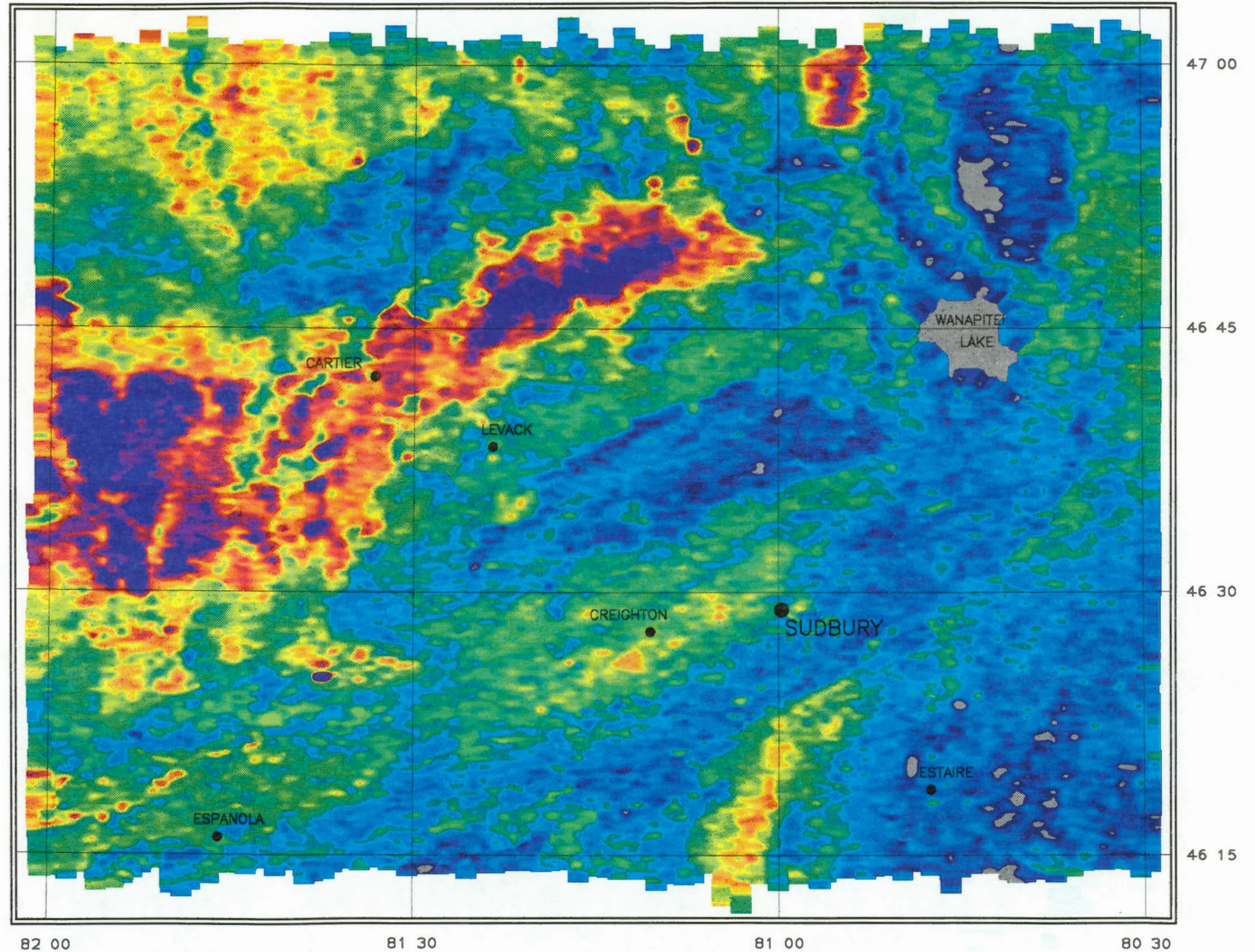
Survey flown, compiled and funded by
 Airborne Geophysics Section
 Mineral Resources Division
 Geological Survey of Canada

Energy, Mines and Resources Canada
 Energie, Mines et Ressources Canada





SCALE= 1 : 500 000
 Line spacing = 1000 Meters



EQUIVALENT THORIUM/POTASSIUM

OPEN FILE 2151
 AIRBORNE GAMMA RAY SURVEY
 of
 SUDBURY and DISTRICT
 NORTHERN ONTARIO, 1989
 compiled by R Hetu

Survey flown, compiled and funded by
 Airborne Geophysics Section
 Mineral Resources Division
 Geological Survey of Canada

 Energy, Mines and Resources Canada
 Energie, Mines et Ressources Canada



