

CORE DESCRIPTION CHART

WELL

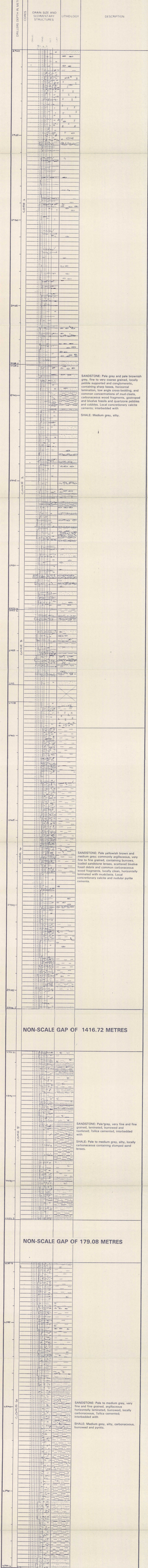
SOUTH MARA C-13

JEANNE D'ARC BASIN,  
EAST COAST CANADA

SCALE 1 : 50

Author: D.G. PEGG

Department of Supply  
and Services



SANDSTONE: Pale grey and pale brownish grey, fine to very coarse grained, locally pebble supported and conglomeratic, containing sharp bases, horizontal lamination, low angle cross-bedding, and common concentrations of mud-clasts, carbonaceous wood fragments, gastropod and bivalve fossils and quartzite pebbles and cobbles. Local concretionary calcite cements; interbedded with

SHALE: Medium grey, silty.

SANDSTONE: Pale yellowish brown and medium grey; commonly argillaceous, very fine to fine grained, containing burrows, loaded sandstone lenses, scattered bivalve fossil debris and common carbonaceous wood fragments, locally clean, horizontally laminated with mudclasts. Local concretionary calcite and nodular pyrite cements.

SANDSTONE: Pale grey, very fine and fine grained, laminated, burrowed and rootletted; ?silica cemented, interbedded with

SHALE: Pale to medium grey, silty, locally carbonaceous containing slumped sand lenses.

SANDSTONE: Pale to medium grey, very fine and fine grained, argillaceous horizontally laminated, burrowed, locally carbonaceous, ?silica cemented; interbedded with

SHALE: Medium grey, silty, carbonaceous, burrowed and pyritic.