



FIELD POLARITY
STRUCTURE SECTION

LINE NO: 3 DIRECTION: EAST
AREA: SOUTH BC CORDILLERA LITHOPROBE
DATUM: 2000 m A.S.L.

PROCESSED FOR:
ENERGY, MINES AND RESOURCES CANADA LTD.

DATE PROCESSED: MAR. 1986 DATE SHOT: OCT. 1985
SHOT BY: ENERTEC GEOPHYSICAL SERVICES

FIELD PARAMETERS

SOURCE TYPE	VIBROSEIS	GEOPHONE TYPE	L-280 14 Hz
SOURCE INTERVAL	200 m	GROUP INTERVAL	100 m
SOURCE LAYOUT	4 Vib. at 5 m	GEOPHONE LAYOUT	18 at 4.11 m
SWEEP LENGTH	16 sec	SWEEP RANGE	0 - 40 Hz
INSTRUMENTATION	DFS	GAIN MODE	I.F.P.
FIELD FILTER	12/64 Hz Notch In	COVERAGE	3000 x
RECORD LENGTH	18.8 Sec.	SAMPLE INTERVAL	4 ms
SPREAD TRACE	1 - 40 SP		
DISTANCE	4200 - 300		

DISPLAY PARAMETERS

TRACES/INCH 36 INCHES/SECOND 3.75

PROCESSING PARAMETERS

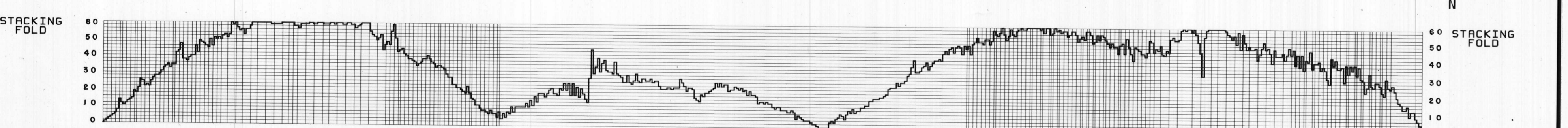
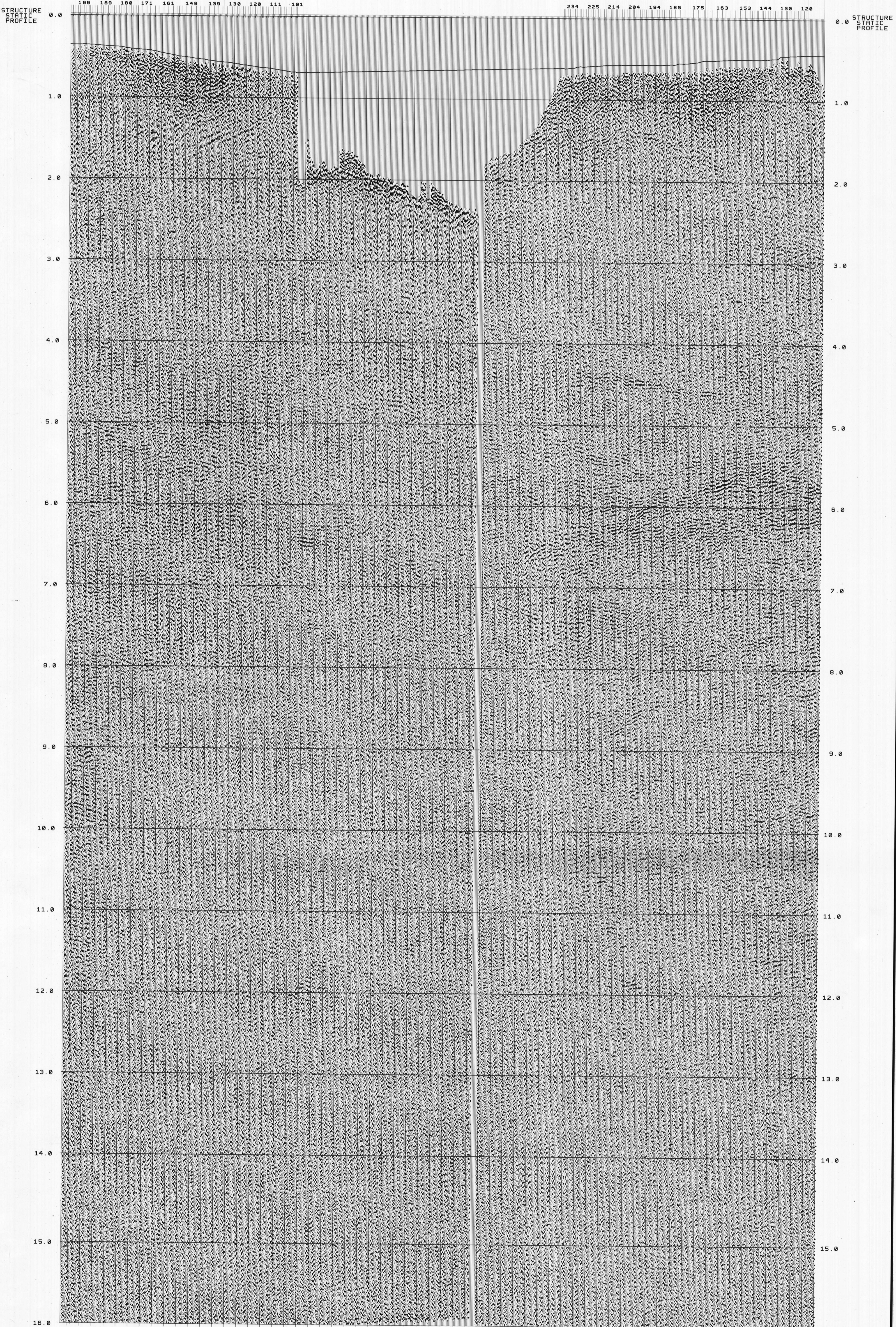
- 1 DEMULTIPLEX
Recorded Length 16000 ms Sample Rate 4 ms
Processed Length 16000 ms Sample Rate 4 ms
- 2 AMPLITUDE RECOVERY - EXPONENTIAL CURVE
- 3 GEOMETRY - CROOKED LINE
- 4 TRACE EDIT ON SHOTS
- 5 FIRST BREAK MUTES
S.P. 120 - S.P. 238:
Distance 0 2500 4600 6600 10000 m
Mute 0 800 1200 1550 1950 ms
Variable mutes for undershoot
S.P. 102 - S.P. 285:
Distance 0 1900 3700 7000 10400 m
Mute 0 500 900 1550 2000 ms
- 6 STRUCTURE STATICS - ELEVATION ONLY
Datum 2000 m A.S.L.
Replacement Velocity 4000 m/sec
- 7 AMPLITUDE EQUALIZATION
AUTOMATIC GAIN CONTROL
Window 0 - 1000 ms
- 8 TRACE GATHER
- 9 NORMAL MOVEOUT
- 10 STATICS - TRIM
Correlation Window 4000 - 8000 ms
- 11 60 FOLD STACK
- 12 FILTER - DIGITAL BANDPASS
FILTER 1 Pass Band 5/8 - 40/45 Appl. Gate 0 - 16000 ms
- 13 AMPLITUDE EQUALIZATION - MEAN SCALE
Window 1000 - 7000 ms



TIME VEL.
0 4000
1000 5000
2000 6000
4000 6000
6000 6400
12000 7000
16000 7200

TIME VEL.
0 4000
1000 5000
2000 5000
4000 5000
6000 6400
12000 7000
16000 7200

TIME VEL.
0 4000
1000 5000
2000 5000
4000 5000
6000 6400
12000 7000
16000 7200



This map has been reprinted from a scanned version of the original map. Reproduction par numérisation d'une carte sur papier.

OPEN FILE
DOSSIER PUBLIC
2130
GEOLOGICAL SURVEY OF CANADA
COMMISSION GEOLOGIQUE DU CANADA
OTTAWA
1989