



FIELD POLARITY
STRUCTURE SECTION

LINE NO: 1A DIRECTION: EAST
AREA: SOUTH BC CORDILLERA LITHOPROBE
DATUM: 2000 m A.S.L.

PROCESSED FOR:
ENERGY, MINES AND RESOURCES CANADA LTD.

DATE PROCESSED: MAR. 1986 DATE SHOT: SEPT. 1985
SHOT BY: ENERTEC GEOPHYSICAL SERVICES

FIELD PARAMETERS

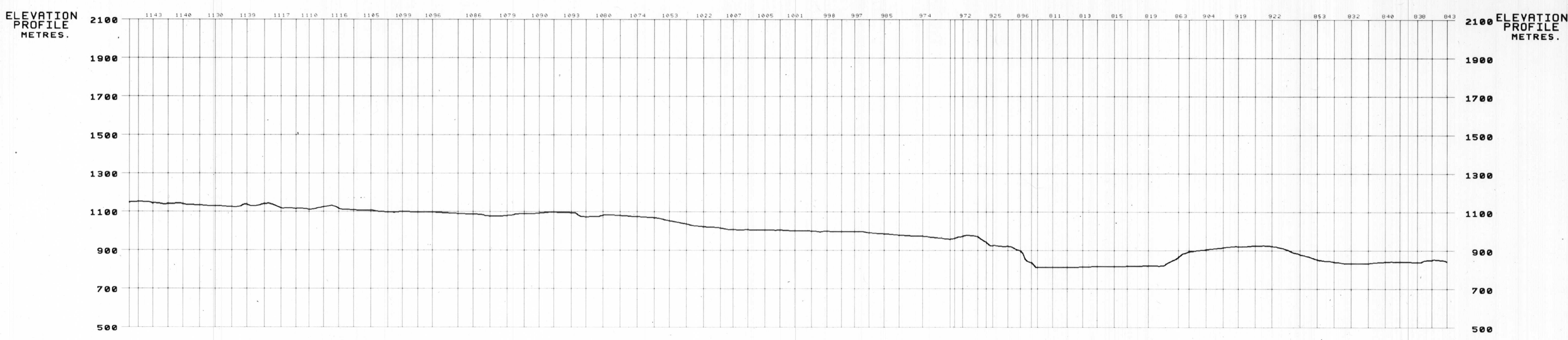
SOURCE TYPE	VIBROSEIS	GEOPHONE TYPE	L-280 14 Hz
SOURCE INTERVAL	200 m	GROUP INTERVAL	100 m
SOURCE LAYOUT	4 Vib. at 5 m	GEOPHONE LAYOUT	18 at 4.11 m
SWEEP LENGTH	16 sec	SWEEP RANGE	0 - 40 Hz
INSTRUMENTATION	DFSV	GAIN MODE	I. F. P.
FIELD FILTER	12/64 Hz Notch In	COVERAGE	3000 Z
RECORD LENGTH	18.8 Sec.	SAMPLE INTERVAL	4 ms
SPREAD TRACE	1 - 80 SP	SP	81 - 120
DISTANCE	8200 - 300		300 - 4200 m

DISPLAY PARAMETERS

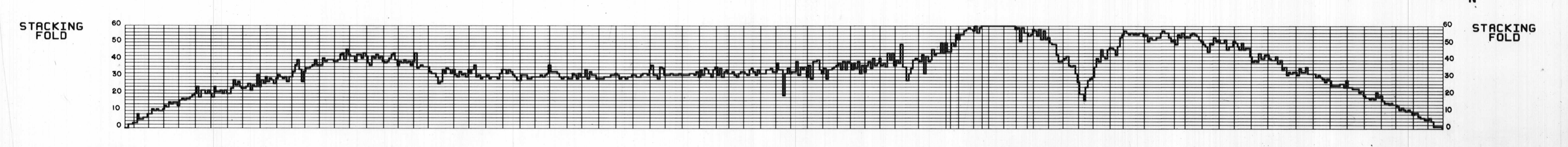
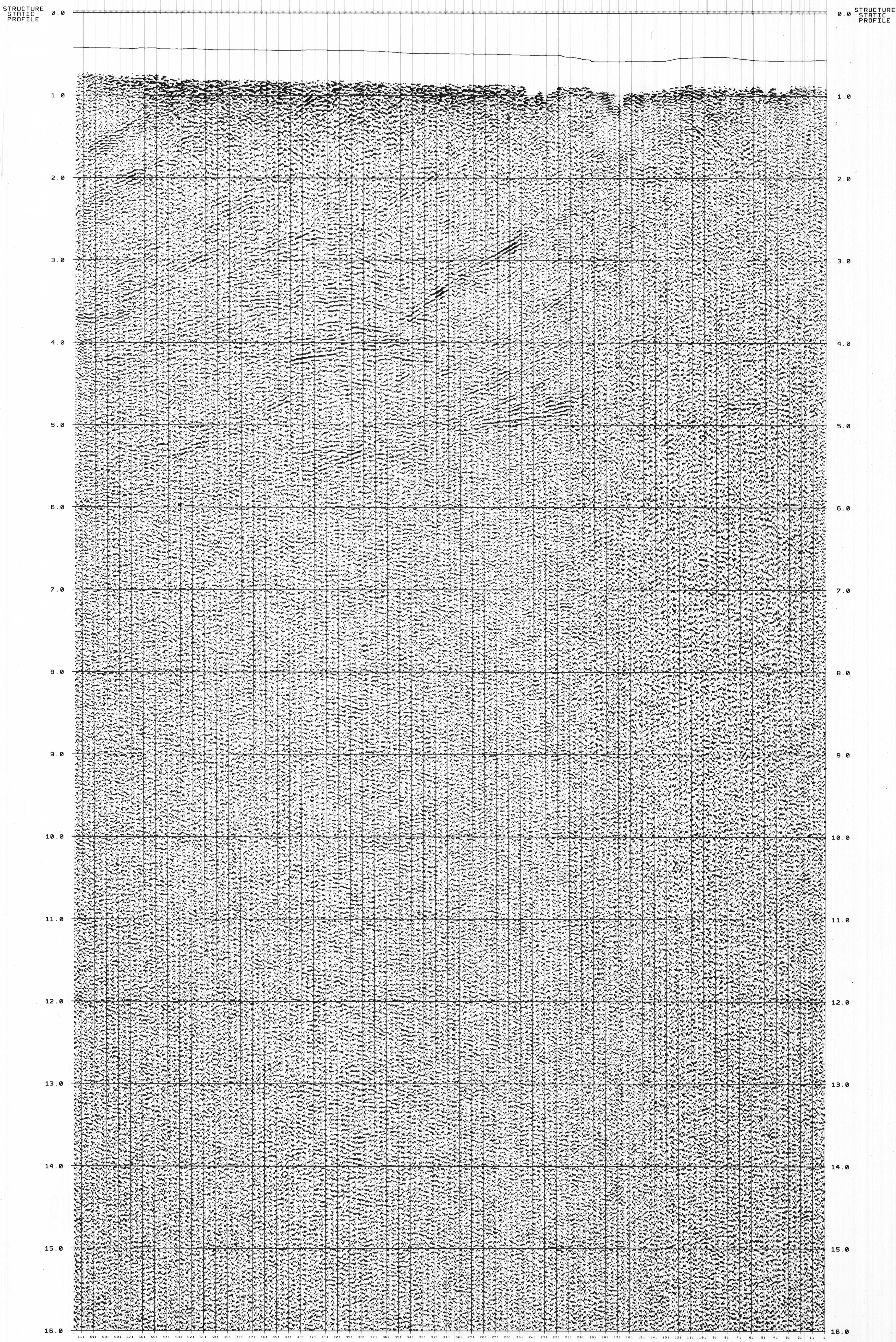
TRACES/INCH 36 INCHES/SECOND 3.75

PROCESSING PARAMETERS

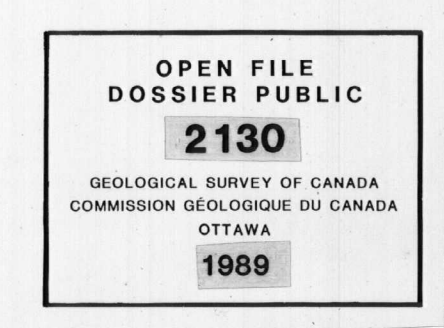
- 1 DEMULTIPLY
Recorded Length 16000 ms Sample Rate 4 ms
Processed Length 16000 ms Sample Rate 4 ms
- 2 AMPLITUDE RECOVERY - EXPONENTIAL CURVE
- 3 GEOMETRY - CROOKED LINE
- 4 TRACE EDIT ON SHOTS
- 5 FIRST BREAK MUTES
S.P. 635
Distance 0 4000 8000 12500 m
Mute 300 1100 1500 2500 ms
S.P. 765
Distance 0 4000 8000 12500 15000 m
Mute 300 1200 1800 2500 2900 ms
S.P. 779
Distance 0 4000 8000 12500 15000 20000 m
Mute 300 1200 1800 2500 2900 3300 ms
S.P. 829
Distance 0 4000 8000 12500 m
Mute 300 1200 1800 2500 ms
S.P. 1001
Distance 0 4000 8000 12500 m
Mute 300 1200 1800 2500 ms
- 6 STRUCTURE STATICS - ELEVATION ONLY
Datum 2000 m A.S.L.
Replacement Velocity 4000 m/sec
- 7 AMPLITUDE EQUALIZATION
AUTOMATIC GAIN CONTROL
Window 0 - 1000 ms
- 8 TRACE GATHER
- 9 NORMAL MOVEOUT
- 10 60 FOLD STACK
- 11 FILTER - DIGITAL BANDPASS
FILTER 1 Pass Band 5/8 - 40/45 Appl. Gate 0 - 16000 ms
- 12 AMPLITUDE EQUALIZATION - MEAN SCALE
Window 1000 - 7000 ms



TIME VEL.	0 5000	0 5250	0 4750	0 5250	0 4500	0 4500	0 4500
	1000 5500	1000 5750	1000 4750	1000 5750	1000 4500	1000 4500	1000 4500
	2000 5750	2000 5750	2000 4800	2000 5750	2000 5200	2000 5200	2000 5200
	3000 6000	3000 6250	3000 5000	3000 6000	3000 5300	3000 5300	3000 5300
	4000 6400	4000 6750	4000 5250	4000 6400	4000 5700	4000 5700	4000 5700
	5000 6800	5000 7250	5000 5500	5000 6800	5000 6100	5000 6100	5000 6100
	6000 7200	6000 7750	6000 5750	6000 7200	6000 6500	6000 6500	6000 6500
	7000 7600	7000 8250	7000 6000	7000 7600	7000 6900	7000 6900	7000 6900
	8000 8000	8000 8750	8000 6250	8000 8000	8000 7300	8000 7300	8000 7300
	9000 8400	9000 9250	9000 6500	9000 8400	9000 7600	9000 7600	9000 7600
	10000 8800	10000 9750	10000 6750	10000 8800	10000 7800	10000 7800	10000 7800
	11000 9200	11000 10250	11000 7000	11000 9200	11000 8000	11000 8000	11000 8000
	12000 9600	12000 10750	12000 7250	12000 9600	12000 8200	12000 8200	12000 8200
	13000 10000	13000 11250	13000 7500	13000 10000	13000 8400	13000 8400	13000 8400
	14000 10400	14000 11750	14000 7750	14000 10400	14000 8600	14000 8600	14000 8600
	15000 10800	15000 12250	15000 8000	15000 10800	15000 8800	15000 8800	15000 8800
	16000 11200	16000 12750	16000 8250	16000 11200	16000 9000	16000 9000	16000 9000



This map has been reprinted from a scanned version of the original map. Reproduction par numérisation d'une carte sur papier.



SHEET 2 OF 12

Plate 2