



55 L/7	55 L/8	55 K/5
55 L/2	55 L/1	55 K/4
55 E/15	55 E/16	55 F/13

**GOLD AND BASE METAL EXPLORATION
USING DRIFT AS A SAMPLE MEDIUM,
KAMINAK LAKE - TURQUETIL LAKE AREA**
W. W. Shiels and P. A. Wyatt

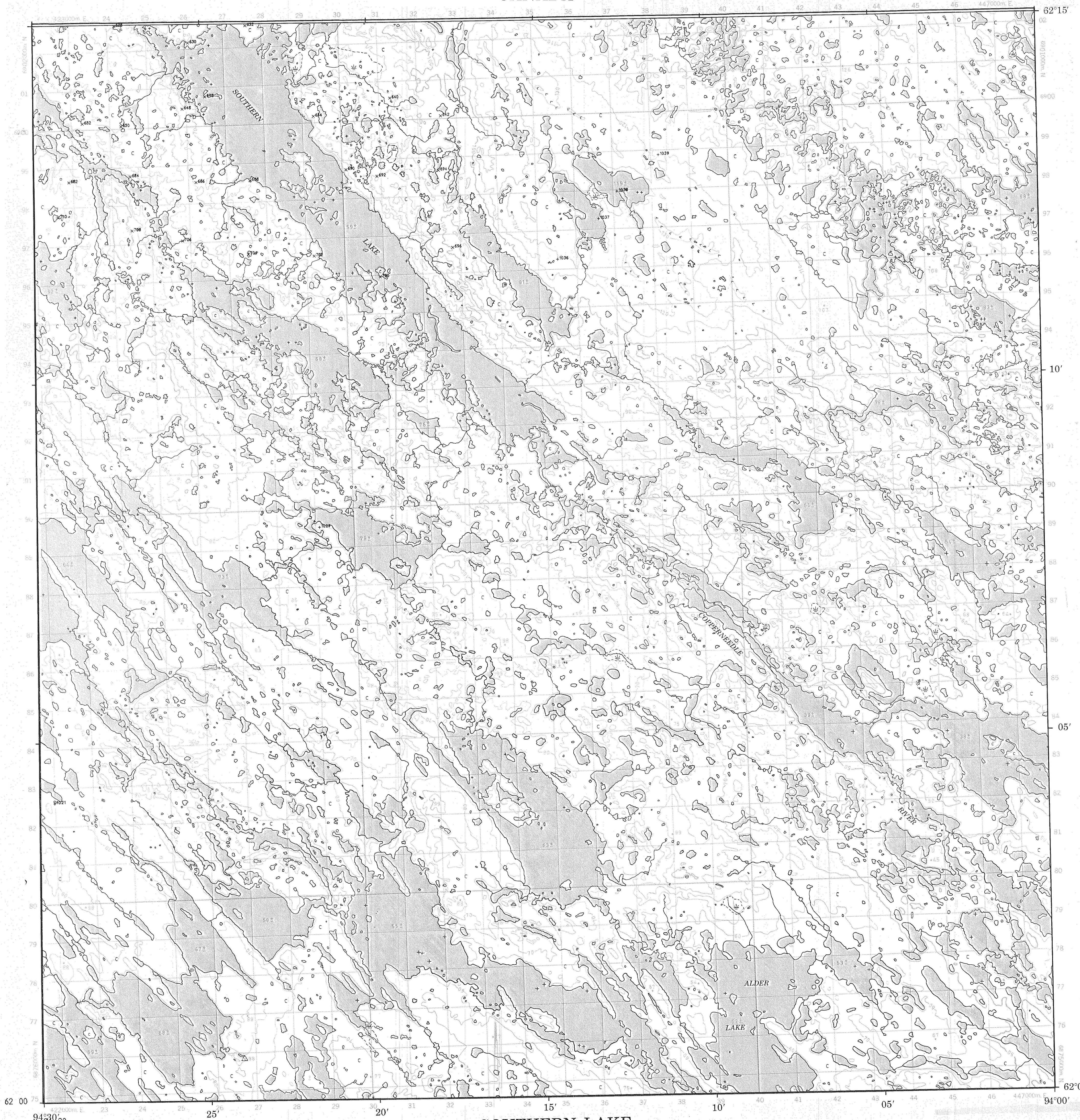
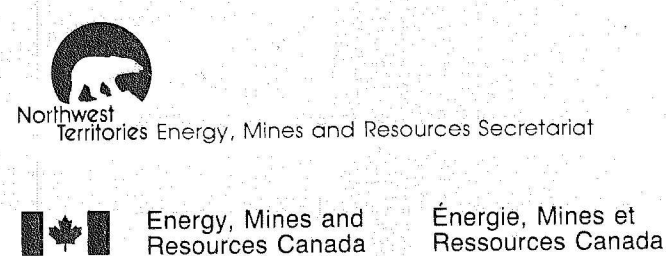
SAMPLE LOCATIONS
55L/1

This map has been reprinted from a scanned version of the original map
Reproduction par numérisation d'une carte sur papier

+ 1970
x 1973

Contribution to Canada-Northwest Territories Mineral Development Subsidiary Agreement 1987-91, under the Economic Development Agreement. Project funded by the Geological Survey of Canada

Contribution à l'Entente auxiliaire Canada-Territoires du Nord-Ouest d'exploitation minérale 1987-1991, dans le cadre de l'Entente de développement économique. Projet subventionné par la Commission géologique du Canada

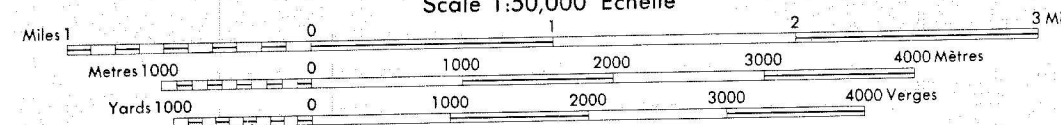


SOUTHERN LAKE
DISTRICT OF KEEWATIN
NORTHWEST TERRITORIES

ELEVATIONS EN MÈTRES AU-DESSUS DU NIVEAU MOYEN DE LA MER
ÉQUIDISTANCE DES COURBES 10 MÈTRES
SYSTÈME DE RÉFÉRENCE GÉODÉSIQUE NORD-AMÉRICAIN 1927
PROJECTION TRANSVERSE DE MERCATOR

PRODUCED BY SURVEYS AND MAPPING BRANCH,
DEPARTMENT OF ENERGY, MINES AND RESOURCES,
OTTAWA, 1974.
COPIES MAY BE OBTAINED FROM THE CANADA MAP OFFICE,
DEPARTMENT OF ENERGY, MINES AND RESOURCES, OTTAWA,
OR YOUR NEAREST MAP DEALER.
© CANADA COPYRIGHTS RESERVED 1974

ELEVATIONS IN METRES ABOVE MEAN SEA LEVEL
CONTOUR INTERVAL 10 METRES
NORTH AMERICAN DATUM 1927
TRANSVERSE MERCATOR PROJECTION



OPEN FILE
DOSSIER PUBLIC
2132
GEOLOGICAL SURVEY OF CANADA
COMMISSION GÉOLOGIQUE DU CANADA
OTTAWA
1989