



- Coxheath Hills (Geology by Thicke, 1987)**
- Carboniferous**  
 C Mainly clastic sedimentary rocks (undivided)
- Devonian**  
 D<sub>ML</sub> MacLean Lake Formation (clastic rocks)
- Cambrian**  
 C<sub>DM</sub> Mainly clastic sedimentary rocks (includes Dupé, MacMillan, and McNeill Formations)
- Late Hadrynian (Fourchu Group)**  
 H<sub>4A</sub> Rhyolitic tuffs and flows; minor mafic to intermediate volcanic rocks and volcanoclastic sedimentary rocks  
 H<sub>4B</sub> Andesitic tuffs and flows; minor felsic and mafic flows  
 H<sub>4C</sub> Basaltic flows, debris flows, and tuffs; minor felsic and intermediate volcanic rocks
- Intrusive Rocks**  
 Coxheath Pluton  
 H<sub>4CCH</sub> Granodiorite  
 H<sub>4CCH</sub> Quartz monzonite  
 H<sub>4CCH</sub> Dioritic rocks  
 H<sub>4CCH</sub> Gabbro
- Spruce Brook Pluton  
 H<sub>4CSB</sub> Monzogranite  
 H<sub>4CSB</sub> Granodiorite  
 H<sub>4CSB</sub> Dioritic rocks
- Stirling Belt**
- Carboniferous**  
 C Sedimentary rocks (undivided)
- Devono-Carboniferous**  
 DC Sedimentary rocks (undivided)
- Early Cambrian(?)**  
 E<sub>1</sub> Red and gray quartzite, wacke, pebble conglomerate, siltstone, and slate
- Late Hadrynian (Fourchu Group)**  
 (stratigraphic sequence uncertain)  
 H<sub>4SA</sub> Quarts-carbonate layers and lenses  
 H<sub>4SB</sub> Andesitic to basaltic lithic tuff; basaltic flows  
 A Basaltic lithic tuff B basaltic flows  
 H<sub>4SC</sub> Andesitic lithic tuff and tuff  
 H<sub>4SD</sub> Wacke, siltstone, conglomerate (cg)  
 H<sub>4SE</sub> Basaltic flows, breccias, and lithic tuffs  
 H<sub>4SF</sub> Rhodacitic crystal tuff  
 H<sub>4SG</sub> A Rhodolitic quartz-feldspar crystal-lithic tuff  
 B Rhodolitic to dacitic quartz-feldspar crystal-lithic tuff  
 H<sub>4SH</sub> Quarts-feldspar porphyritic rhyolite/rhyodacite
- Intrusive Rocks**  
 Lower St. Esprit Pluton  
 CD<sub>4SE</sub> Hornblende biotite granite
- Capelin Cove Pluton  
 H<sub>4CC</sub> Leucogranite
- Minor Intrusive Rocks**  
 H<sub>4M</sub> Leucogranite (Point Michaud)  
 H<sub>4M</sub> Granodiorite  
 H<sub>4M</sub> Diorite  
 H<sub>4M</sub> Mafic porphyry
- East Bay Hills**
- Carboniferous**  
 C Clastic sedimentary rocks (mainly)
- Early Cambrian**  
 E<sub>1</sub> Morrison River Formation (conglomerate, siltstone)
- Late Hadrynian (Fourchu Group)**  
 (stratigraphic sequence uncertain)  
 H<sub>4EA</sub> Rhyolitic crystal tuffs and flows; rhyolitic lithic tuffs and spiclastic rocks  
 H<sub>4EB</sub> Amguddaloid and/or porphyritic basaltic flows; mafic tuff; lithic tuff; spiclastic rocks  
 H<sub>4EC</sub> Andesitic and rhyolitic tuff; rhyolitic flow and/or tuff lenses  
 H<sub>4ED</sub> Rhyolitic tuffs and flows  
 H<sub>4EE</sub> Andesitic to rhyolitic crystal tuff and lithic-crystal tuff  
 H<sub>4EF</sub> A Andesitic crystal and lithic-crystal tuffs  
 B Rhyolitic tuff  
 C Laminated siltstone  
 D Basaltic flows and tuffs  
 H<sub>4EG</sub> A Amguddaloid and/or porphyritic basaltic to andesitic tuff and lithic tuff; dacitic lithic and crystal tuff  
 B Dacitic lithic tuff and crystal tuff; minor amguddaloid and porphyritic basalt  
 C Basaltic to andesitic flows and tuffs; minor dacitic vitric and crystal tuff  
 H<sub>4EH</sub> Dacitic to rhyolitic crystal and lithic-crystal tuff; minor basaltic to andesitic tuff
- Intrusive Rocks**  
 MacEachern Lake Pluton  
 H<sub>4EML</sub> Monzogranite; minor granodiorite  
 H<sub>4EML</sub> Granodiorite; minor monzogranite  
 H<sub>4EML</sub> Quartz diorite; minor diorite and quartz monzonite
- Huntington Mountain Pluton  
 H<sub>4HML</sub> Spengranite  
 H<sub>4HML</sub> Leucogranite  
 H<sub>4HML</sub> Monzogranite  
 H<sub>4HML</sub> Granodiorite  
 H<sub>4HML</sub> Dioritic rocks
- Irish Cove Suite  
 H<sub>4ICS</sub> Monzogranite
- Minor Intrusive Rocks**  
 H<sub>4IM</sub> Monzonite  
 H<sub>4IM</sub> Granite porphyry  
 H<sub>4IM</sub> Gabbro; monzonite
- Coastal Belt**
- Late Hadrynian (Fourchu Group)**  
 (stratigraphic sequence uncertain)  
 H<sub>4CA</sub> Basaltic flows and lithic tuffs  
 H<sub>4CB</sub> Rhodacitic lithic-crystal tuff  
 H<sub>4CC</sub> Wacke, siltstone, quartzite  
 H<sub>4CD</sub> Dacitic crystal tuff, dacite, and siltstone  
 H<sub>4CE</sub> Andesitic crystal-lithic and crystal tuff  
 H<sub>4CF</sub> Rhodacitic crystal tuff and rhyolite; minor minor siliceous siltstone  
 H<sub>4CG</sub> Dacitic crystal tuff; minor andesitic lithic-crystal tuff, dacite, and rhyolite
- Intrusive Rocks**  
 Lower St. Esprit Pluton  
 CD<sub>4SE</sub> Hornblende biotite granite
- Capelin Cove Pluton  
 H<sub>4CC</sub> Leucogranite
- Minor Intrusive Rocks**  
 H<sub>4M</sub> Leucogranite (Point Michaud)  
 H<sub>4M</sub> Granodiorite  
 H<sub>4M</sub> Diorite  
 H<sub>4M</sub> Mafic porphyry

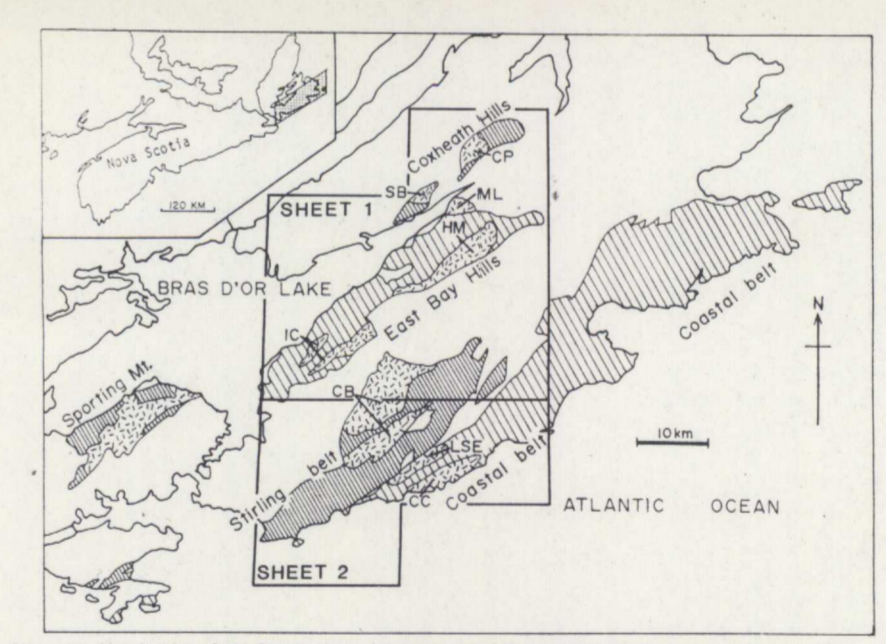
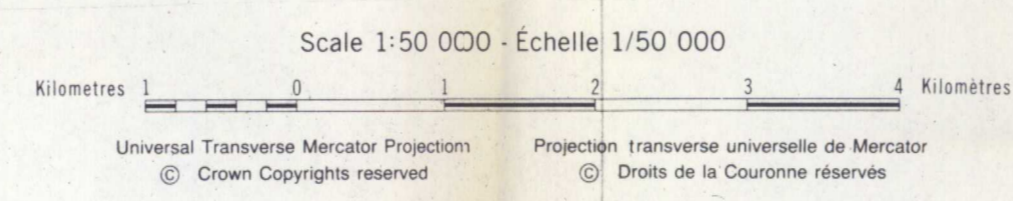


Figure 1. Distribution of the Fourchu Group (diagonal lines) and associated late Hadrynian-early Cambrian granitoid rocks (dash pattern) in southeastern Cape Breton Island, with areas of cover (light grey) outlined in black. Where space allows, lines delineate the Fourchu Group in the Coastal Belt and East Bay Hills from the Fourchu Group in the Stirling, Coxheath Hills, and Stirling Mountain belts (cross-hatched diagonal lines). Coxheath Pluton, Spruce Brook Pluton, MacEachern Lake Pluton, Huntington Mountain Pluton, Irish Cove Suite Pluton, Capelin Cove Pluton, and Lower St. Esprit Pluton. CD=Capelin Cove Pluton; C=Carboniferous; DC=Devono-Carboniferous.

Geology by: Sandra M. Barr, Alan S. Macdonald, Chris E. White, 1987, Department of Geology, Acadia University, Wolfville, Nova Scotia BOP 1X0

THE FOURCHU GROUP AND ASSOCIATED GRANITOID ROCKS, SOUTHEASTERN CAPE BRETON ISLAND, NOVA SCOTIA



Contribution to Canada-Nova Scotia Mineral Development Agreement 1984-89, a subsidiary agreement under the Economic and Regional Development Agreement. Project funded by the Geological Survey of Canada.

Department of Mines and Energy

Energy, Mines and Resources Canada / Énergie, Mines et Ressources Canada

OPEN FILE  
 DOSSIER PUBLIC  
 1759  
 GEOLOGICAL SURVEY  
 COMMISSION GÉOLOGIQUE  
 OTTAWA  
 SHEET 2 OF 2

This map has been produced from a scanned version of the original map. Reproduction par numérisation d'une carte sur papier.