

- Carboniferous**
C Mainly clastic sedimentary rocks (undivided)
- Devonian**
D₁ Middle Lake Formation (clastic rocks)
- Cambrian**
C₁ Mainly clastic sedimentary rocks (includes Digby, MacMillan, and Meckel Formations)
- Late Hadrynian (Fourchu Group)**
H₁ Rhynchonellid tuffs and flows minor mafic to intermediate volcanic rocks and volcanoclastic sedimentary rocks
H₂ Andesitic tuffs and flows minor felsic and mafic flows
H₃ Basaltic flows, debris flows, and tuffs minor felsic and intermediate volcanic rocks
- Intrusive Rocks**
Coxheath Pluton
H₁ Granodiorite
H₂ Quartz monzonite
H₃ Dioritic rocks
H₄ Gabbro
Spruce Brook Pluton
H₁ Monzonite
H₂ Granodiorite
H₃ Dioritic rocks

- Carboniferous**
C Clastic sedimentary rocks (undivided)
- Early Cambrian**
C₁ Morrison River Formation (longicollate, siltstone)
- Late Hadrynian (Fourchu Group)**
(stratigraphic sequence uncertain)
H₁ Rhynchonellid tuffs and flows, rhynchonellid tuffs and volcanic rocks
H₂ Andesitic and rhyolitic tuffs, basaltic flows, mafic tuff, lithic tuff, andesitic rocks
H₃ Andesitic and rhyolitic tuffs, rhyolitic flow and/or tuff masses
H₄ Rhynchonellid tuffs and flows
H₅ Andesitic to rhyolitic tuff and lithic-crystal tuff
H₆ Andesitic tuff and lithic-crystal tuff
H₇ Rhynchonellid tuff
H₈ Lithic and crystal tuff
H₉ Lithic and crystal tuff
H₁₀ Lithic and crystal tuff
H₁₁ Lithic and crystal tuff
H₁₂ Lithic and crystal tuff
H₁₃ Lithic and crystal tuff
H₁₄ Lithic and crystal tuff
H₁₅ Lithic and crystal tuff
H₁₆ Lithic and crystal tuff
H₁₇ Lithic and crystal tuff
H₁₈ Lithic and crystal tuff
H₁₉ Lithic and crystal tuff
H₂₀ Lithic and crystal tuff
H₂₁ Lithic and crystal tuff
H₂₂ Lithic and crystal tuff
H₂₃ Lithic and crystal tuff
H₂₄ Lithic and crystal tuff
H₂₅ Lithic and crystal tuff
H₂₆ Lithic and crystal tuff
H₂₇ Lithic and crystal tuff
H₂₈ Lithic and crystal tuff
H₂₉ Lithic and crystal tuff
H₃₀ Lithic and crystal tuff
H₃₁ Lithic and crystal tuff
H₃₂ Lithic and crystal tuff
H₃₃ Lithic and crystal tuff
H₃₄ Lithic and crystal tuff
H₃₅ Lithic and crystal tuff
H₃₆ Lithic and crystal tuff
H₃₇ Lithic and crystal tuff
H₃₈ Lithic and crystal tuff
H₃₉ Lithic and crystal tuff
H₄₀ Lithic and crystal tuff
H₄₁ Lithic and crystal tuff
H₄₂ Lithic and crystal tuff
H₄₃ Lithic and crystal tuff
H₄₄ Lithic and crystal tuff
H₄₅ Lithic and crystal tuff
H₄₆ Lithic and crystal tuff
H₄₇ Lithic and crystal tuff
H₄₈ Lithic and crystal tuff
H₄₉ Lithic and crystal tuff
H₅₀ Lithic and crystal tuff
H₅₁ Lithic and crystal tuff
H₅₂ Lithic and crystal tuff
H₅₃ Lithic and crystal tuff
H₅₄ Lithic and crystal tuff
H₅₅ Lithic and crystal tuff
H₅₆ Lithic and crystal tuff
H₅₇ Lithic and crystal tuff
H₅₈ Lithic and crystal tuff
H₅₉ Lithic and crystal tuff
H₆₀ Lithic and crystal tuff
H₆₁ Lithic and crystal tuff
H₆₂ Lithic and crystal tuff
H₆₃ Lithic and crystal tuff
H₆₄ Lithic and crystal tuff
H₆₅ Lithic and crystal tuff
H₆₆ Lithic and crystal tuff
H₆₇ Lithic and crystal tuff
H₆₈ Lithic and crystal tuff
H₆₉ Lithic and crystal tuff
H₇₀ Lithic and crystal tuff
H₇₁ Lithic and crystal tuff
H₇₂ Lithic and crystal tuff
H₇₃ Lithic and crystal tuff
H₇₄ Lithic and crystal tuff
H₇₅ Lithic and crystal tuff
H₇₆ Lithic and crystal tuff
H₇₇ Lithic and crystal tuff
H₇₈ Lithic and crystal tuff
H₇₉ Lithic and crystal tuff
H₈₀ Lithic and crystal tuff
H₈₁ Lithic and crystal tuff
H₈₂ Lithic and crystal tuff
H₈₃ Lithic and crystal tuff
H₈₄ Lithic and crystal tuff
H₈₅ Lithic and crystal tuff
H₈₆ Lithic and crystal tuff
H₈₇ Lithic and crystal tuff
H₈₈ Lithic and crystal tuff
H₈₉ Lithic and crystal tuff
H₉₀ Lithic and crystal tuff
H₉₁ Lithic and crystal tuff
H₉₂ Lithic and crystal tuff
H₉₃ Lithic and crystal tuff
H₉₄ Lithic and crystal tuff
H₉₅ Lithic and crystal tuff
H₉₆ Lithic and crystal tuff
H₉₇ Lithic and crystal tuff
H₉₈ Lithic and crystal tuff
H₉₉ Lithic and crystal tuff
H₁₀₀ Lithic and crystal tuff

- Intrusive Rocks**
MacEwen Lake Pluton
H₁ Monzonite, minor granodiorite
H₂ Granodiorite, minor monzonite
H₃ Quartz diorite, minor diorite and quartz monzonite
Huntington Mountain Pluton
H₁ Sigmagranite
H₂ Leucogranite
H₃ Monzonite
H₄ Granodiorite
H₅ Dioritic rocks
Drach Cove Suite
H₁ Monzonite
Minor Intrusive Rocks
H₁ Monzonite
H₂ Granodiorite
H₃ Dioritic rocks
H₄ Gabbro

- Geological Symbols**
Rock outcrop, area of outcrop
Geological boundary (defined, approximate, assumed)
Bedding (inclined, vertical, overturned) - tops known
Bedding (inclined, vertical) - tops unknown
Flow in intrusive rocks (inclined, vertical)
Flow in intrusive rocks (inclined, vertical)
Foliation (inclined, vertical)
Lineation
Axis of minor fold
Fault (defined, approximate, assumed)
Mineral prospect (abandoned)

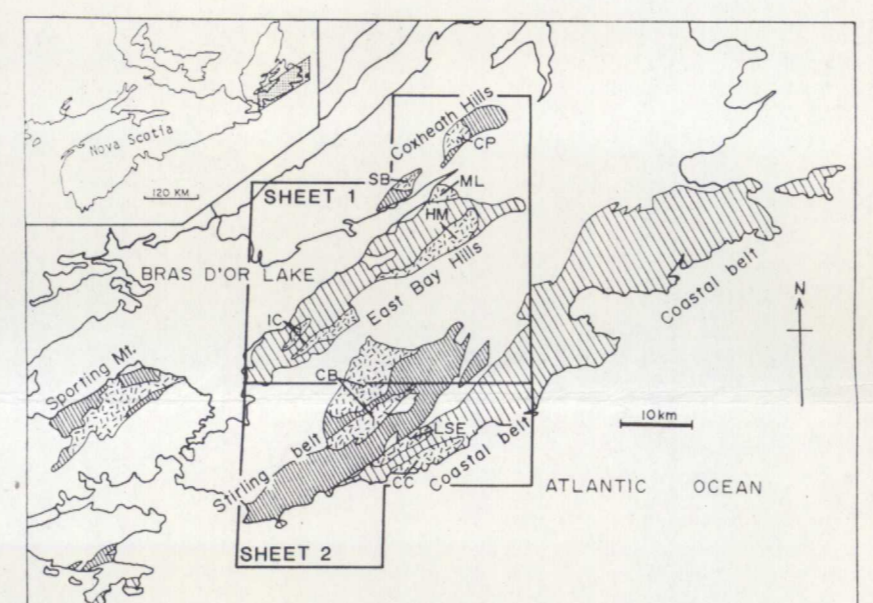


Figure 1. Distribution of the Fourchu Group (designated H₁ to H₆₀) and associated Late Hadrynian granitoid rocks (designated C₁ to C₁₀) in southeastern Cape Breton Island, Nova Scotia. The map shows the distribution of the Fourchu Group and associated Late Hadrynian granitoid rocks in southeastern Cape Breton Island, Nova Scotia. The map shows the distribution of the Fourchu Group and associated Late Hadrynian granitoid rocks in southeastern Cape Breton Island, Nova Scotia.

Geology by: Sandra M. Barr, Alan S. Macdonald, Chris E. White, 1987.
Department of Geology, Acadia University,
Wolfville, Nova Scotia B0P 1Y0



Contribution to Canada-Nova Scotia Mineral Development Agreement 1984-89, a subsidiary agreement under the Economic and Regional Development Agreement. Project funded by the Geological Survey of Canada.

Nova Scotia Department of Mines and Energy

Energy, Mines and Resources Canada / Énergie, Mines et Ressources Canada

THE FOURCHU GROUP AND ASSOCIATED GRANITOID ROCKS, SOUTHEASTERN CAPE BRETON ISLAND, NOVA SCOTIA

Scale 1:50 000 - Echelle 1/50 000
Kilometres / Kilomètres
Universal Transverse Mercator Projection / Projection: transversale universelle de Mercator
© Crown Copyrights reserved / © Droits de la Couronne réservés

OPEN FILE
DOSSIER PUBLIC
1759
GEOLOGICAL SURVEY
COMMISSION GÉOLOGIQUE
OTTAWA
SHEET 1 OF 2