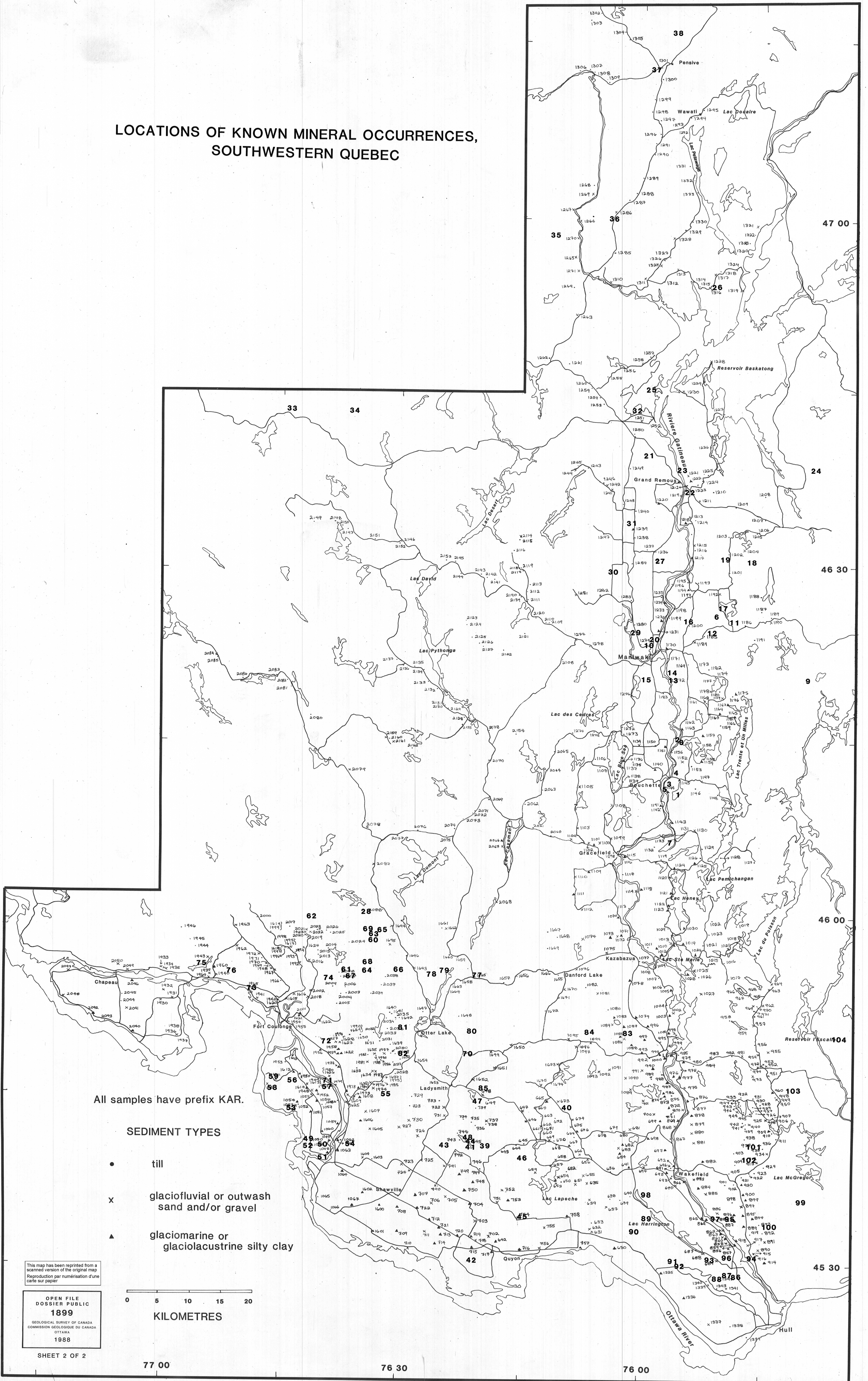


LOCATIONS OF KNOWN MINERAL OCCURRENCES, SOUTHWESTERN QUEBEC



All samples have prefix KAR.

SEDIMENT TYPES

- till
- × glaciofluvial or outwash sand and/or gravel
- ▲ glaciomarine or glaciolacustrine silty clay

This map has been reprinted from a scanned version of the original map.
Reproduction par numérisation d'une carte sur papier

OPEN FILE
DOSSIER PUBLIC
1899
GEOLOGICAL SURVEY OF CANADA
COMMISSION GÉOLOGIQUE DU CANADA
OTTAWA
1988

0 5 10 15 20
KILOMETRES