

GEOLOGICAL SURVEY OF CANADA
COMMISSION GÉOLOGIQUE DU CANADA

DEPARTMENT OF MINES AND TECHNICAL SURVEYS
MINISTÈRE DES MINES ET DES TECHNIQUES

OPEN FILE 1893

METAMORPHIC MAP OF THE CANADIAN CORDILLERA

Compiled by P.B. Read with contributions by G.J. Woodsworth,
H.J. Greenwood, E.D. Ghent and C.A. Evanchick; Assistant
compilers: A.J. Brookfield, J. Filipone and J.F. Pautka; drafting
assistance by P. McFeely

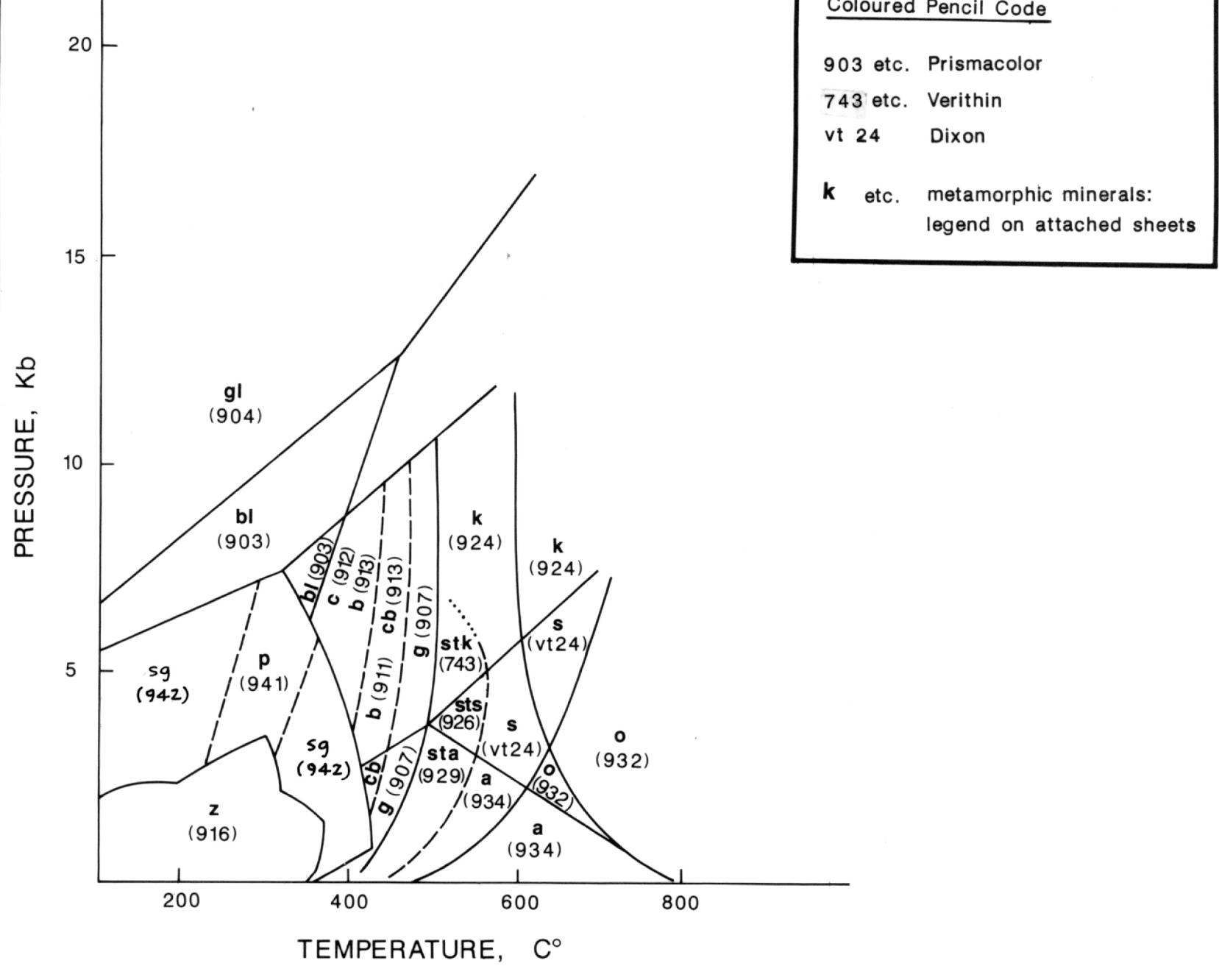
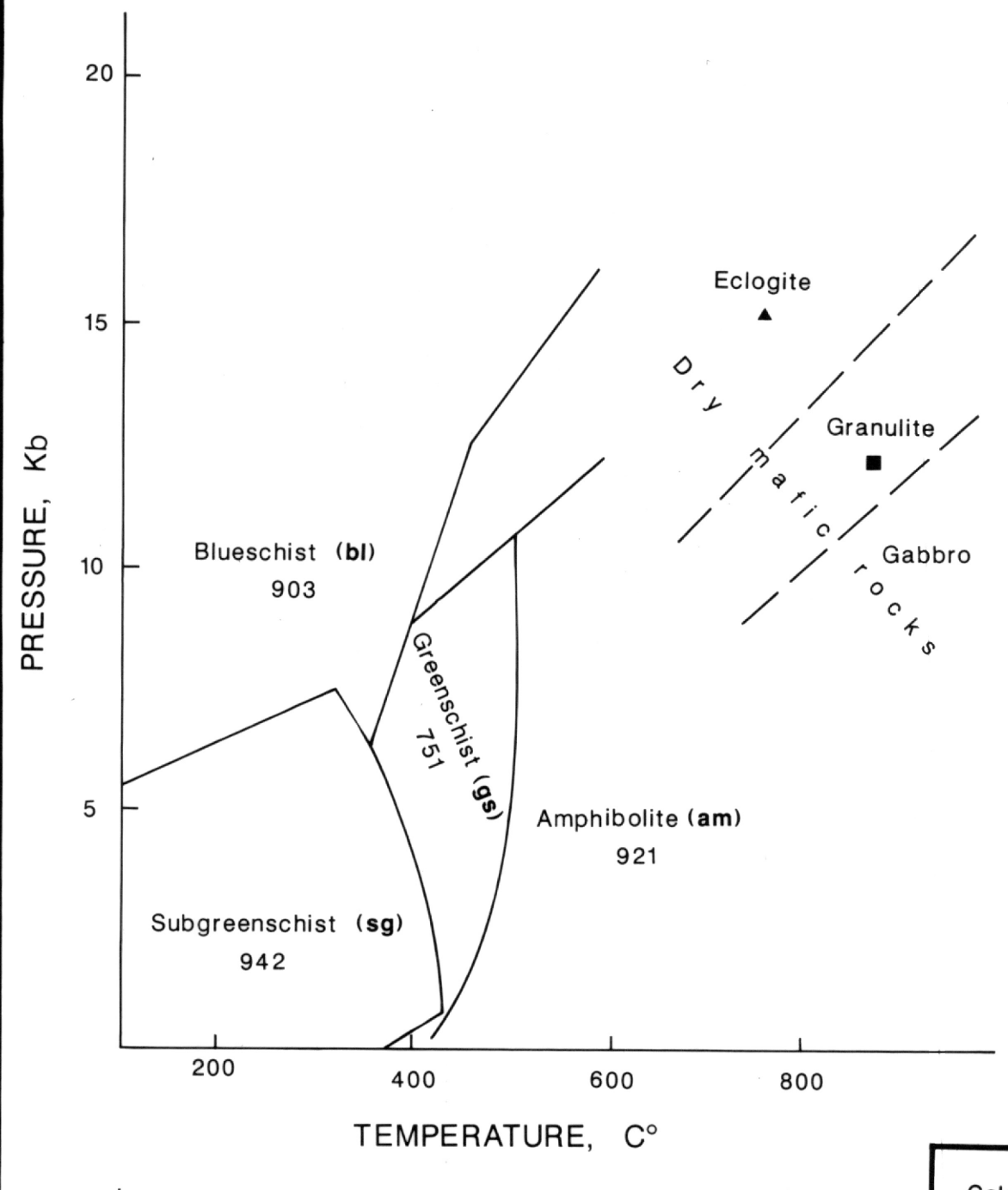
1988

Scale 1:2 000 000

Kilometres: 0 50 100
Miles: 0 50 100

Lambert Conformal Projection, standard parallels 47° and 57°
(The proportions are slightly greater than the Map of Canada, MCR 1.)

© Crown Copyright reserved



Coloured Pencil Code

903 etc. Pyramacolor
1428 etc. Vanthion
v124 Dixon
K etc. metamorphic mineral;
legend on attached sheets

CORRELATIONS AMONG COAL RANK, FIXED CARBON (F.C.) Bl_uib, VITRINITE REFLECTANCE (R_vMAX), TAI, CAI, AND METAMORPHIC FACIES OR ZONES

COAL RANK	F.C. R _v MAX	TAI	CAI	METAMORPHIC FACIES OR ZONES
				8.0 Biotite & Garnet zones
				6.0 Chlorite zone
				5.0
				4.0
Meta-anthracite (ma)	98	4.00	4.0	4.0
Anthracite (an)	92	3.00		
Semi-anthracite (sa)	86	2.05	3.75	3.5
Low volatile bituminous (lb)	78	1.50	3.5	3.0
Medium volatile bituminous (mb)	69	1.10	3.0	2.0
High volatile A bituminous (hb:A) Bl _u ib*	14,000	0.71	2.75	
High volatile B bituminous (hb:B)	13,000	0.57		1.5
High volatile C bituminous (hb:C)	11,500	0.47	2.5	
Subbituminous A (sb:A)	10,500			
Subbituminous B (sb:B)	9,500	0.43		
Subbituminous C (sb:C)	8,300	0.38	2.25	1.0
Lignite A (lg:A)				
Lignite B (lg:B)	6,300			

*Moist, mineral matter-free Bl_uib