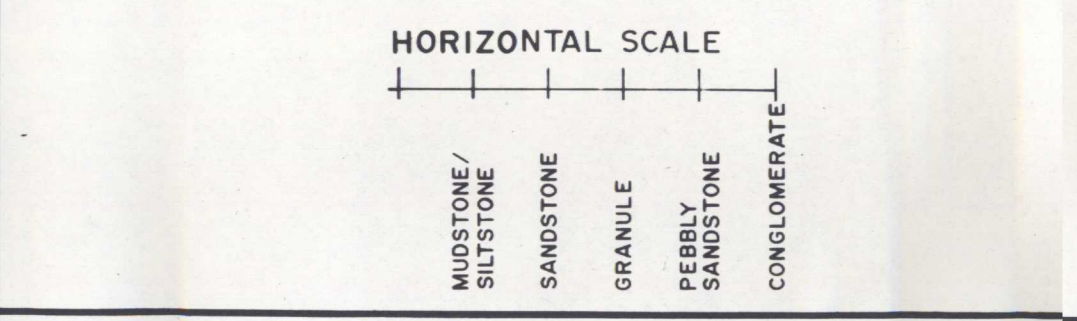


E EVAPORITE FACIES ASSOCIATION
 EL EVAPORITE & LIMESTONE FACIES ASSOCIATION
 B BRECCIA FACIES
 L LIMESTONE FACIES
 R RED CLASTIC FACIES ASSOCIATION
 G GREEN CLASTIC FACIES ASSOCIATION

LEGEND

- LIMESTONE AND EVAPORITE FACIES KEY**
- EVAPORITE FACIES**
- 21 MASSIVE EVAPORITE, MAINLY BLUE-ANHYDRITE
 - 20 MAINLY GYPSUM INTERBEDDED WITH LIMESTONE
- LIMESTONE**
- 19 "RELIC" CHICKENWIRE TEXTURE
 - 18 MINOR "BRECCIA" TEXTURES
 - 17 EXTENSIVE "BRECCIA" TEXTURES
 - 16 CONVOLUTED-LAMINATED
 - 15 LAMINATED WITH SMALL PISOLITES/ONCOLITES/INTRACLASTS
 - 14 LAMINATED (ALGAL-LAMINATED) WAVY LAMINATION (RIBBON LIMESTONE), RARE CROSSBEDS #4
 - 13 STROMATOLITIC
 - 12 MASSIVE MICRITE, STRUCTURELESS
- CLASTIC FACIES KEY**
- SANDSTONE**
- 12 STRUCTURELESS MUDSTONE
 - 11 BURROWED
 - 10 TROUGH CROSS-BEDDED
 - 9 HORIZONTALLY BEDDED
 - 8 STRUCTURELESS CONGLOMERATE / PEBBLY SANDSTONE
 - 7 TROUGH CROSS-BEDDED
 - 6 VAGUE STRATIFIED/BEDDED
 - 5 WELL-DEFINED STRATIFIED/BEDDED
 - 4 NORMALLY GRADED (LESS COMMON, STRATIFIED TOP)
 - 3 INVERSE-TO-NORMALLY GRADED
 - 2 INVERSELY-GRADED
 - 1 UNGRADED, CLAST-SUPPORTED
 - 0 UNGRADED, CONGLOMERATIC/PEBBLY MUDSTONE (MATRIX-SUPPORTED)
- MINERALIZATION TEXTURES**
- ROSETTES
 - COLLOFORM
 - VEINED
 - MASSIVE REPLACEMENT OF SULPHIDES
 - CALCITE REPLACEMENT
 - BARITE REPLACEMENT (LABELED ON SECTIONS)
 - SOLUTION "INTRACLASTS"



GEOLOGICAL SURVEY OF CANADA
 OTTAWA, ONTARIO, CANADA
 DSS CONTRACT No. 23233-7-1192/OI-S2
 GEOLOGY OF THE JUBILEE ZINC-LEAD DEPOSIT,
 NOVA SCOTIA

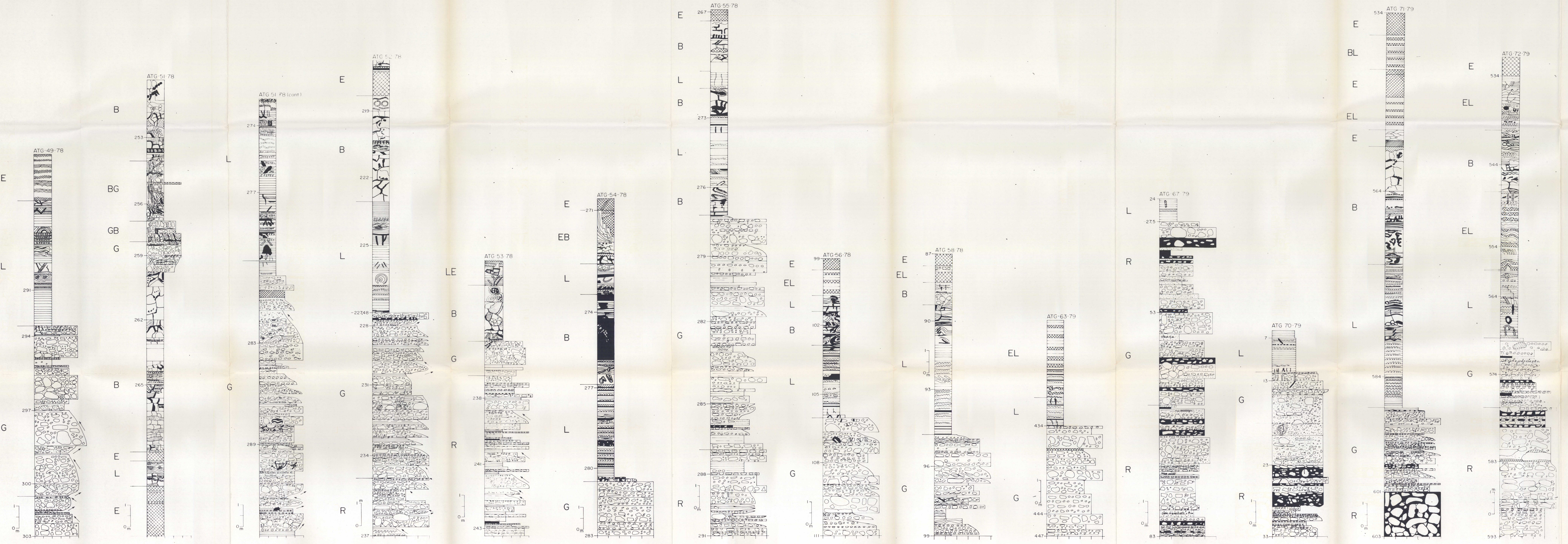
LOGS OF DRILLHOLES
 (SHEET 2)

ENCLOSURE: 5 MAY 31, 1988
 HORIZONTAL SCALE GIVES ROCK TYPE AS SEEN ON SCALE
 PROJECT: 87-28 DWN.BY: JKL CKD.BY: Alan R. Williams

Geomarine GEOMARINE ASSOCIATES LTD.
 HALIFAX & ST. JOHN'S
 CANADA

OPEN FILE
 DOSSIER PUBLIC
 1891
 GEOLOGICAL SURVEY OF CANADA
 COMMISSION GEOLOGIQUE DU CANADA
 1988
 SHEET 5 OF 10

NOTE:
 THE NUMBERS INDICATED ALONG THE LEFT HAND SIDE OF EACH LOG ARE THE FOOTAGE TAGS (IN FEET) BELOW THE DRILL COLLARS AS FOUND IN THE DRILL CORE BOXES DURING LOGGING. NO ADJUSTMENT HAS BEEN MADE ON THE LOG SECTIONS FOR EXPANDED CORE, OR APPARENT ENHANCED SECTION ENCOUNTERED WHEN BEDDING IS AT HIGH ANGLES TO THE DRILL CORE.



This map has been produced from a scanned version of the original map
 Reproduction par numérisation d'une carte sur papier