

This document was produced
by scanning the original publication.
Ce document a été produit par
numérisation de la publication originale.

CANADA

DEPARTMENT OF ENERGY, MINES AND RESOURCES

Geological Survey of Canada



NATIONAL GEOCHEMICAL RECONNAISSANCE

1:2,000,000 Coloured Compilation Map Series

OPEN FILE 748

Northern Labrador

(23G(NE $\frac{1}{4}$), 23H(N $\frac{1}{2}$), 23I, 23J(E $\frac{1}{2}$), 14D, 13N, 13M, 13L(N $\frac{1}{2}$))

Resource Geochemistry Subdivision
Resource Geophysics and Geochemistry Division
Geological Survey of Canada
Ottawa, Ontario, Canada

Source data acquired under the auspices of
the Canada-Newfoundland Uranium Reconnaissance Program.

*Copies May Be Purchased From
Ashley Reproductions Inc.
232 Bank Street
Ottawa, Ontario
K2P 1X1*

(613) 235-2115

FAX: 235-3020

PREPARED JANUARY 1981

Introduction

The National Geochemical Reconnaissance 1:2,000,000 Coloured Compilation Map Series is a product of the continuing interpretation of the National Geochemical Reconnaissance (NGR) data. Variables have been computer contoured and plotted utilizing an Applicon colour plotter. Xerox colour copies of these maps are available in a series of 20 Open Files.

In the course of NGR surveys (1975-1979), sediment and water samples were collected from more than 23,000 streams and 41,000 lakes in Canada. The surveys were carried out under the auspices of the Uranium Reconnaissance Program (URP) and Provincial Geochemical Reconnaissance Surveys. Sediments from all areas were analyzed for U, Zn, Cu, Pb, Ni, Co, Mn, Fe, Mo and those from some areas for Hg, Ag, As, V, F, W, Sn and Ba. When collected, waters were analyzed for one or more of U, F and pH.

National Geochemical Reconnaissance - Uranium Reconnaissance Program

Part of the data for the NGR 1:2,000,000 Coloured Compilation Map Series was obtained from NGR - URP surveys (1975-1978) in the provinces. These surveys were jointly planned and funded under the terms of the following agreements:

British Columbia: Canada - British Columbia Uranium Reconnaissance Agreement.

Saskatchewan: Canada - Saskatchewan Mineral Exploration and Development Program, Project 6-1, 1974, Reconnaissance Geoscience Surveys (lake sediment survey).

Saskatchewan: Canada - Saskatchewan Agreement on a Uranium Reconnaissance Program.

Manitoba: Canada - Manitoba Subsidiary Agreement on Mineral
Exploration and Development; Schedule A, 3(b)(ii).

Ontario: Canada - Ontario Agreement on a Uranium Reconnaissance Program.

Newfoundland: Canada - Newfoundland Agreement on a Uranium Reconnaissance Program.

Other data were obtained from NGR-URP surveys (1975-1978) in the Yukon and Northwest Territories. These surveys were totally funded and directed by the Resource Geochemistry Subdivision, Geological Survey of Canada.

Provincial Geochemical Reconnaissance Surveys

Additional data used in the preparation of the NGR 1:2,000,000 Coloured Compilation Map Series have been provided through geochemical reconnaissance surveys in British Columbia (1978 and 1979) and in Ontario (1979). These surveys were totally funded by the provinces. The geochemical data from these surveys have been incorporated into the NGR archives.

Preparation of the NGR 1:2,000,000 Coloured Compilation Map Series

The maps and annotative material have been prepared directly from digital data by a computer mapping package (APPMAP) being developed in the Resource Geochemistry Subdivision, Geological Survey of Canada. This package makes use of an Applicon colour plotter and Applicon library software resident on a CDC Cyber 74 computer at the Computer Science Centre of the Department of Energy, Mines and Resources. The legend, border and annotative material were entered through APPMAP directives; the geochemical survey data were accessed from archival data files. APPMAP interpolates from the irregularly spaced reconnaissance data to a regular grid, which, for these data, is $3,200 \text{ m}^2$. The interpolation is in the form of a moving average where weighting is by an inverse distance function ($1/d^3$) using the nearest five data points. The effect of this moving average is to filter out the minor irregularities in the spatial data and emphasize the broader scale and regional features. Data percentiles were used for contour interval selection.

The NGR 1:2,000,000 Coloured Compilation Map Series has been prepared by members of the Resource Geochemistry Subdivision:

Project Co-ordinators

W.B. Coker and D.J. Ellwood

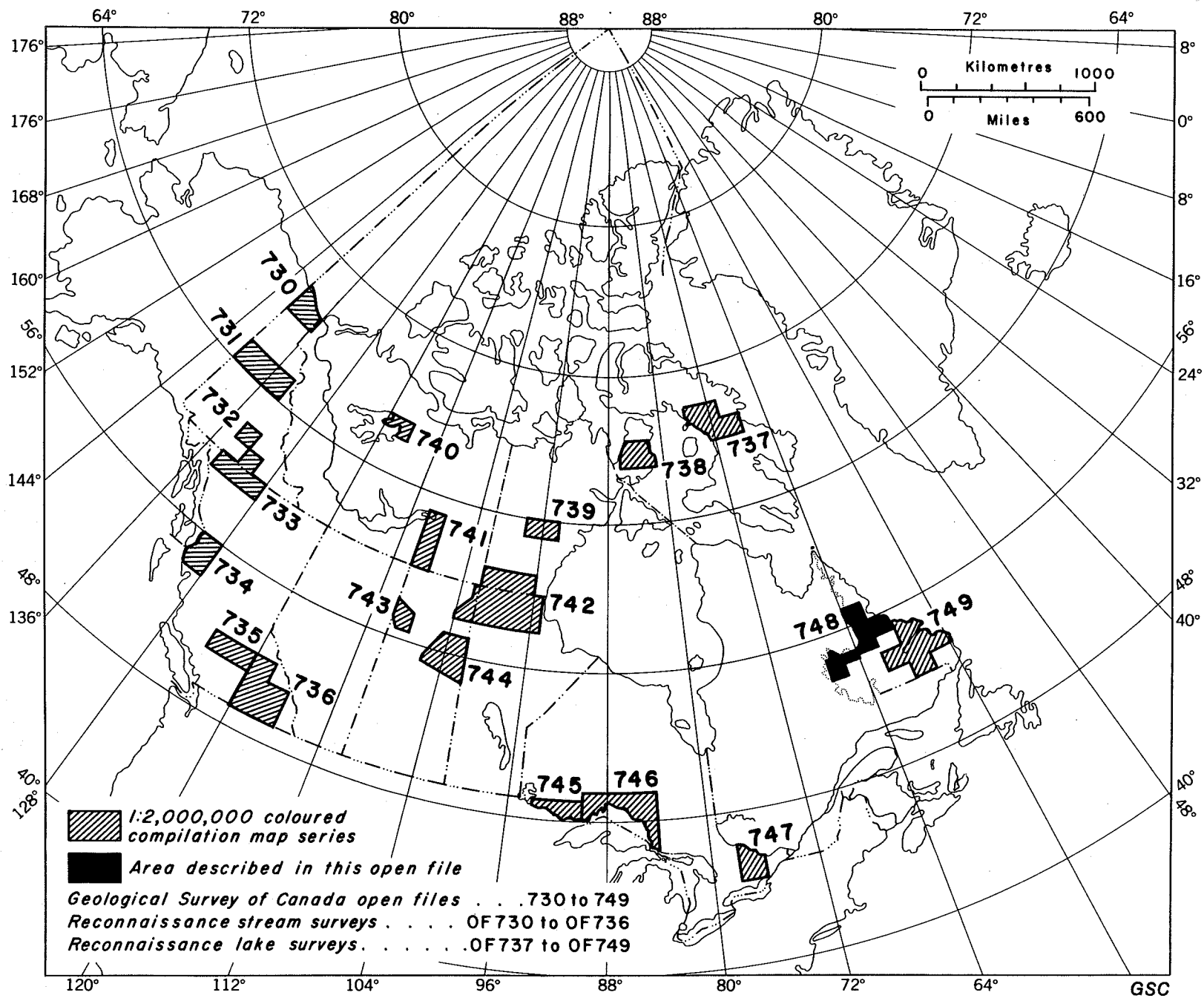
Computer Mapping Package (APPMAP)

D.J. Ellwood

Base Map Digitizing and Contour Interval Selection

Open File 730	Northern Yukon and Northwest Territories (117A and parts of 117B,C,D)	W.D. Goodfellow
Open File 731	Central Yukon Territory (106D, 116A,B and parts of 106C,E,F, and 116C,F,G and H)	W.D. Goodfellow
Open File 732	Quiet Lake, Southern Yukon Territory (105F)	W.D. Goodfellow
Open File 733	Southern Yukon Territory and Northern British Columbia (104N,O,P; and 105B)	S.B. Ballantyne
Open File 734	Prince Rupert Area, British Columbia (103I,P and parts of 103J,O)	S.B. Ballantyne
Open File 735	Taseko Lakes and Bonaparte Lake Area, British Columbia (92O and 92P)	S.B. Ballantyne
Open File 736	Southeastern British Columbia (82E,F,K,L and M)	S.B. Ballantyne
Open File 737	Baffin Island, Northwest Territories (27B and part of C; 37A,D)	Y.T. Maurice
Open File 738	Melville Peninsula, Northwest Territories (46N,O,P; 47A(S $\frac{1}{2}$) and 47B(S $\frac{1}{2}$))	E.M. Cameron
Open File 739	Baker Lake, Northwest Territories (55M, 65P)	Y.T. Maurice

Open File 740	Great Bear Lake, Northwest Territories (86K,L and part of 96I)	Y.T. Maurice
Open File 741	Nonacho Lake, Northwest Territories (75C,F, and K)	Y.T. Maurice
Open File 742	Northern Manitoba, Southeastern Northwest Territories and Northeastern Saskatchewan (54L,M; 64I,J,K,N,O,P and parts of 64L,M; 65A,B,C)	W.B. Coker
Open File 743	West-Central Saskatchewan (74F and 74C(N $\frac{1}{2}$))	W.B. Coker
Open File 744	East-Central Saskatchewan (63M, 64D and parts of 63K,L,N and 73I,O,P and 74A)	E.H.W. Hornbrook
Open File 745	Southwestern Ontario (52B,C)	W.B. Coker
Open File 746	Lake Superior, Ontario (52A, 52H(S $\frac{1}{2}$), 42D, 42E(S $\frac{1}{2}$), 42C, 42F(S $\frac{1}{2}$), 41N, 41K(N $\frac{1}{2}$))	W.B. Coker
Open File 747	Southeastern Ontario (31C(N $\frac{1}{2}$), 31F)	W.B. Coker
Open File 748	Northern Labrador (23G(NE $\frac{1}{4}$), 23H(N $\frac{1}{2}$), 23I, 23J(E $\frac{1}{2}$), 14D, 13N, 13M, 13L(N $\frac{1}{2}$)).	D.R. Boyle
Open File 749	Eastern Labrador (13B,F,G,H,I,J and O; 3E)	D.R. Boyle



**NATIONAL GEOCHEMICAL RECONNAISSANCE 1:2,000,000
COLOURED COMPILATION MAP SERIES**

Open File 748: Northern Labrador (23G(NE $\frac{1}{4}$), 23H(N $\frac{1}{2}$), 23I, 23J(E $\frac{1}{2}$), 14D, 13N, 13M, 13L(N $\frac{1}{2}$))

The data compiled on these maps were acquired under the auspices of the Canada - Newfoundland Uranium Reconnaissance Program and previously published as part of the National Geochemical Reconnaissance:

References

Geological Survey of Canada/Newfoundland Department of Mines and Energy

1979a: Regional lake sediment and water geochemical reconnaissance data, central Labrador (NTS 13M, 13L(N $\frac{1}{2}$)): Geological Survey of Canada, Open File 557 (National Geochemical Reconnaissance Release NGR 37-1978);

..or..

Newfoundland Department of Mines and Energy, Release LAB. 133.

1979b: Regional lake sediment and water geochemical reconnaissance data, central Labrador (NTS 13N): Geological Survey of Canada, Open File 558 (National Geochemical Reconnaissance Release NGR 38-1978);

..or..

Newfoundland Department of Mines and Energy, Release LAB. 13N (13).

1979c: Regional lake sediment and water geochemical reconnaissance data, central Labrador (NTS 14D): Geological Survey of Canada, Open File 559 (National Geochemical Reconnaissance Release NGR 39-1978);

..or..

Newfoundland Department of Mines and Energy, Release LAB. 14D (11).

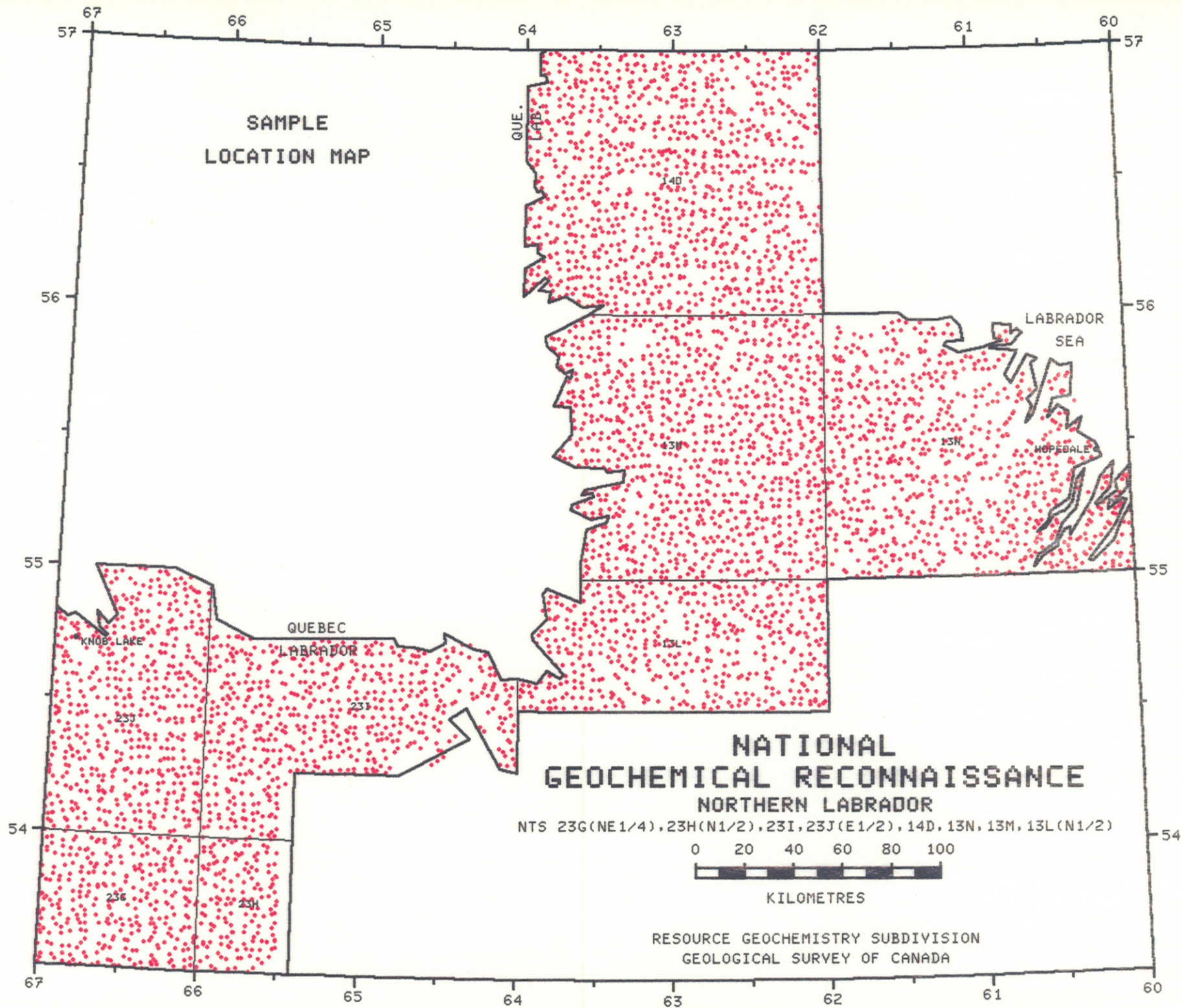
1979d: Regional lake sediment and water geochemical reconnaissance data, central Labrador (NTS 23G(NE $\frac{1}{4}$), 23H(N $\frac{1}{2}$), 23I and 23J(E $\frac{1}{2}$)): Geological Survey of Canada, Open File 560 (National Geochemical Reconnaissance Release NGR 40-1978);

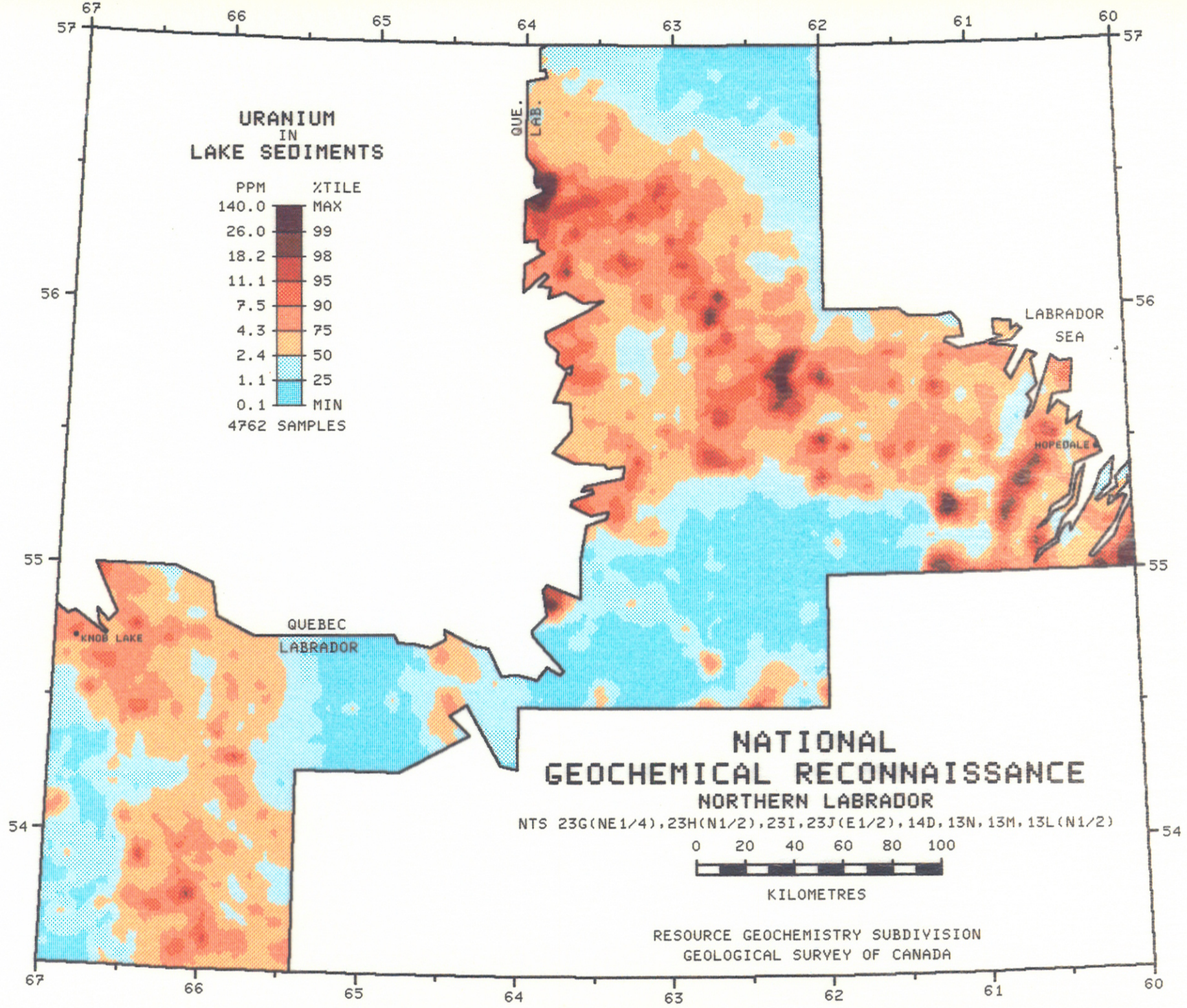
..or..

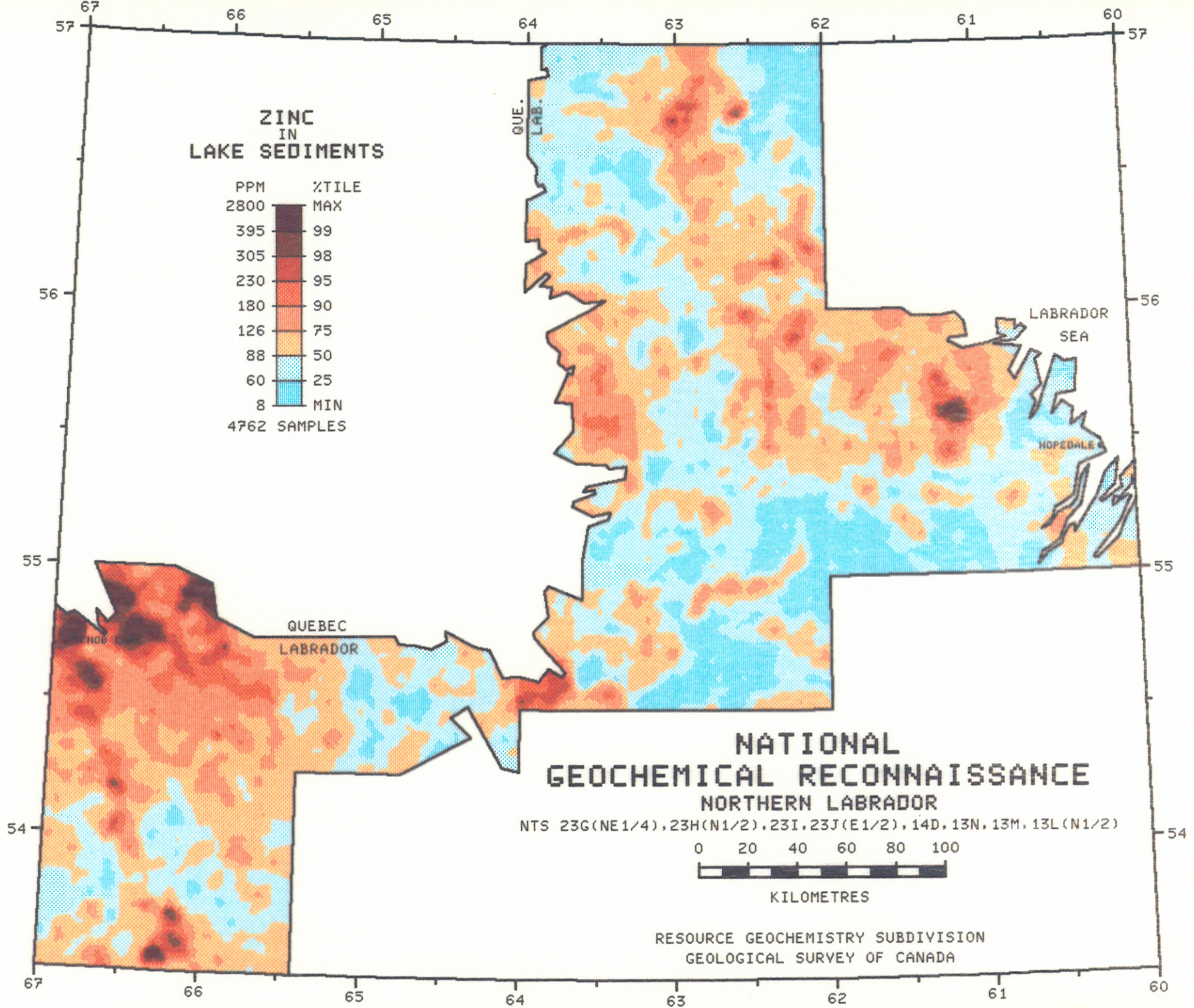
Newfoundland Department of Mines and Energy, Release LAB. 169.

1:2,000,000 Coloured Compilation Maps

- | | |
|--------------------------------|----------------------------------|
| 1. Sample Location | 9. Iron in Lake Sediments |
| 2. Uranium in Lake Sediments | 10. Molybdenum in Lake Sediments |
| 3. Zinc in Lake Sediments | 11. Silver in Lake Sediments |
| 4. Copper in Lake Sediments | 12. Arsenic in Lake Sediments |
| 5. Lead in Lake Sediments | 13. Fluorine in Lake Sediments |
| 6. Nickel in Lake Sediments | 14. Uranium in Lake Waters |
| 7. Cobalt in Lake Sediments | 15. Fluorine in Lake Waters |
| 8. Manganese in Lake Sediments | 16. pH in Lake Waters |







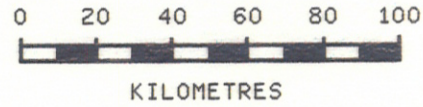
**ZINC
IN
LAKE SEDIMENTS**

PPM	%TILE
2800	MAX
395	99
305	98
230	95
180	90
126	75
88	50
60	25
8	MIN

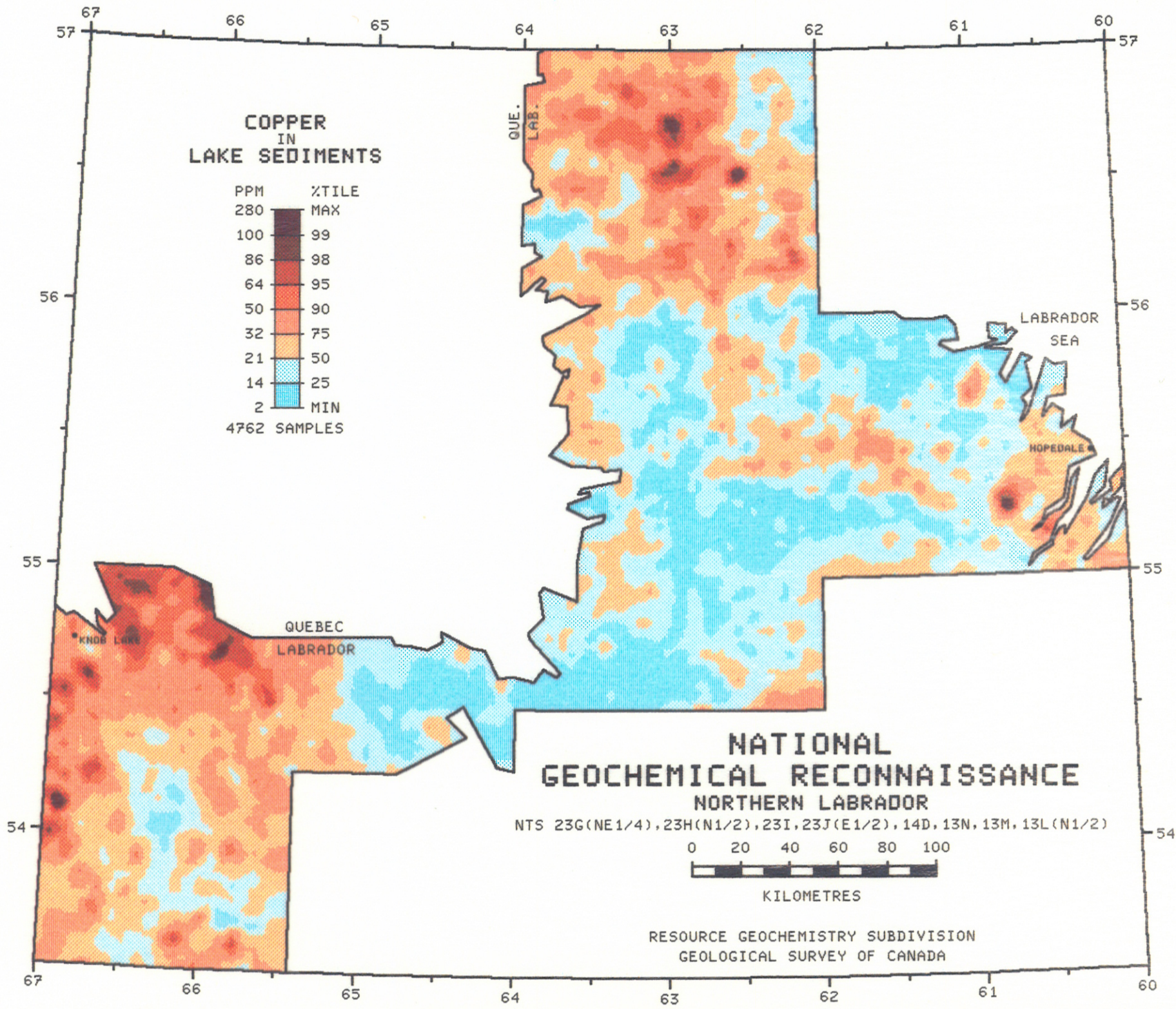
4762 SAMPLES

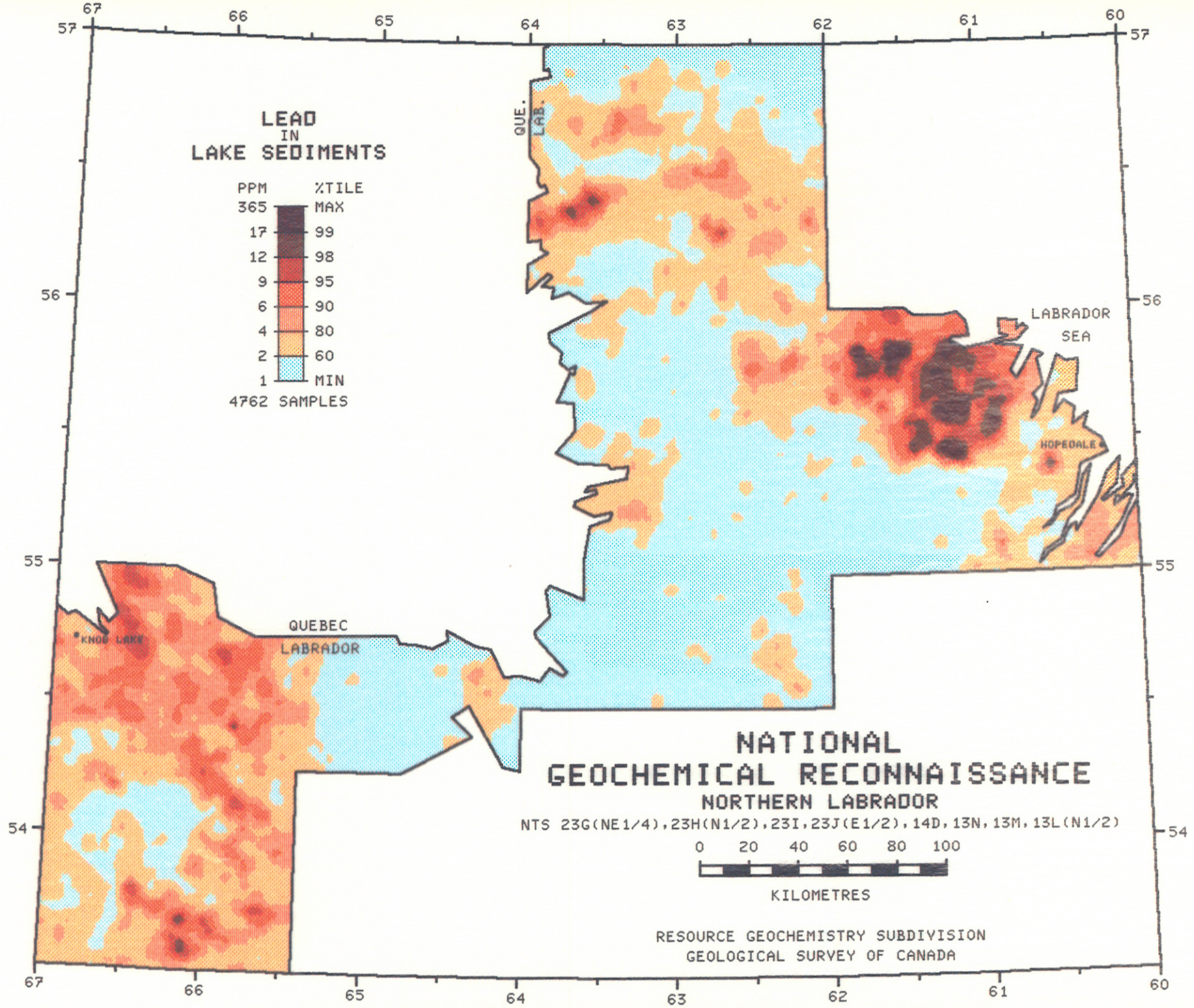
**NATIONAL
GEOCHEMICAL RECONNAISSANCE
NORTHERN LABRADOR**

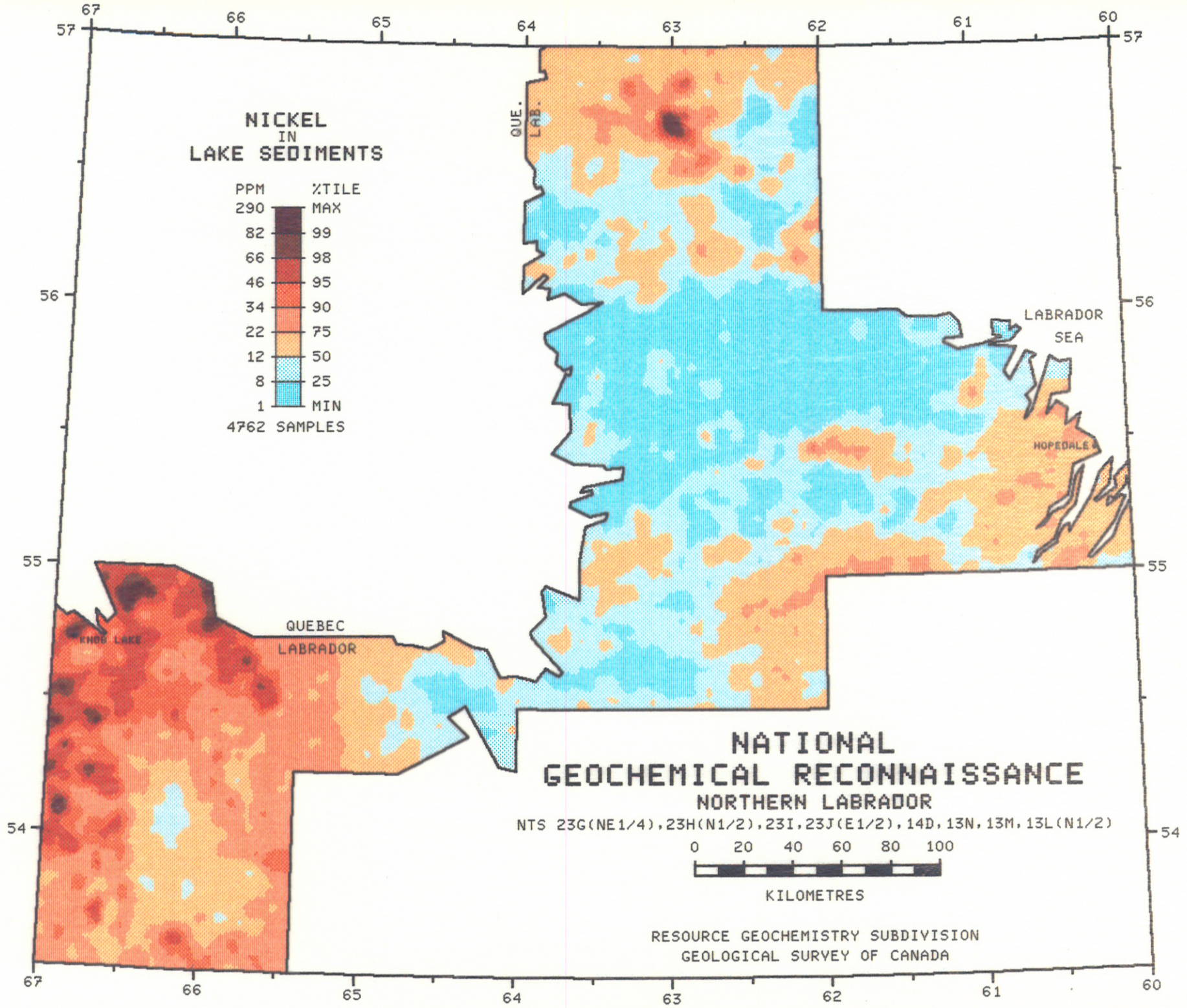
NTS 23G(NE1/4), 23H(N1/2), 23I, 23J(E1/2), 14D, 13N, 13M, 13L(N1/2)

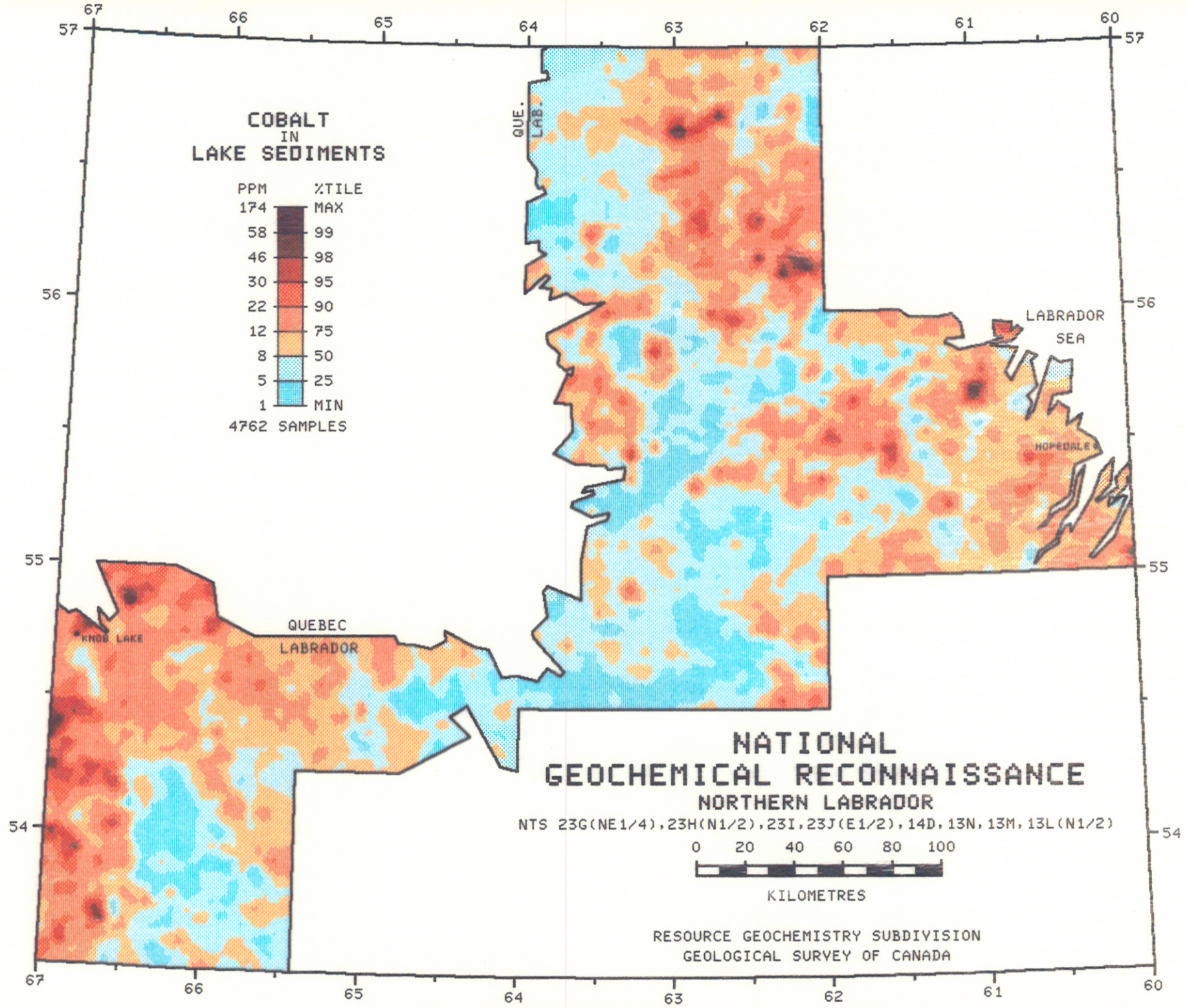


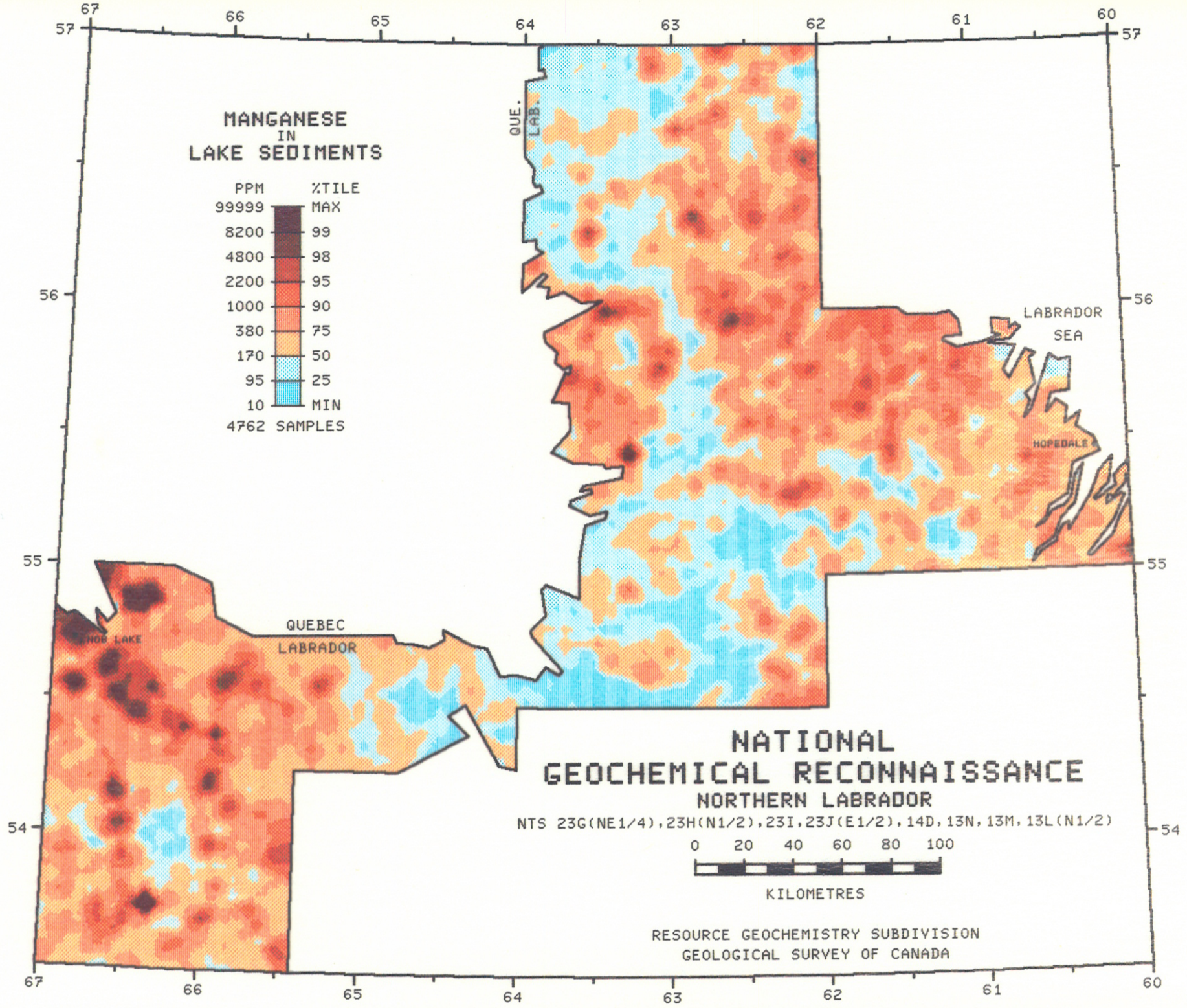
RESOURCE GEOCHEMISTRY SUBDIVISION
GEOLOGICAL SURVEY OF CANADA

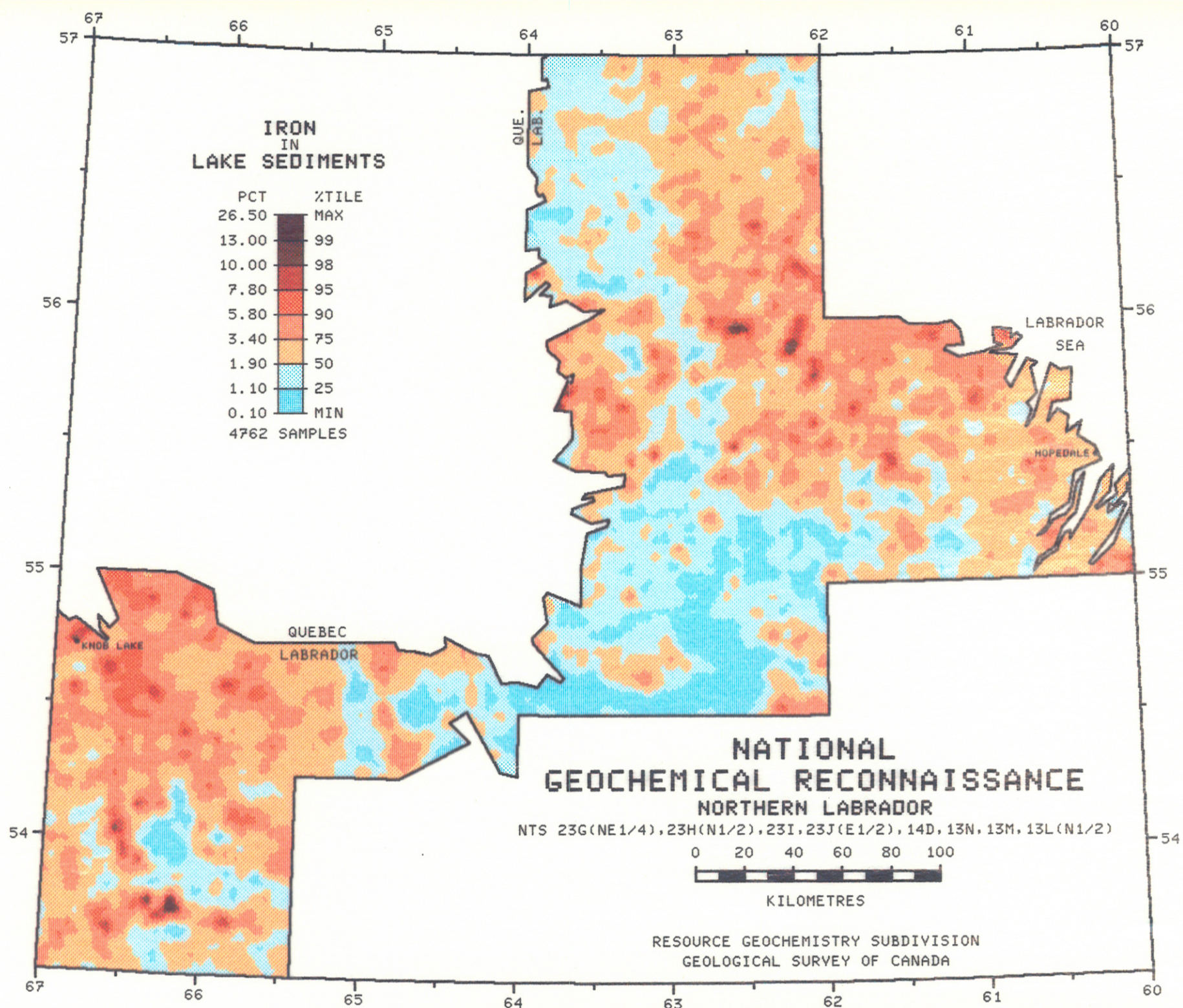


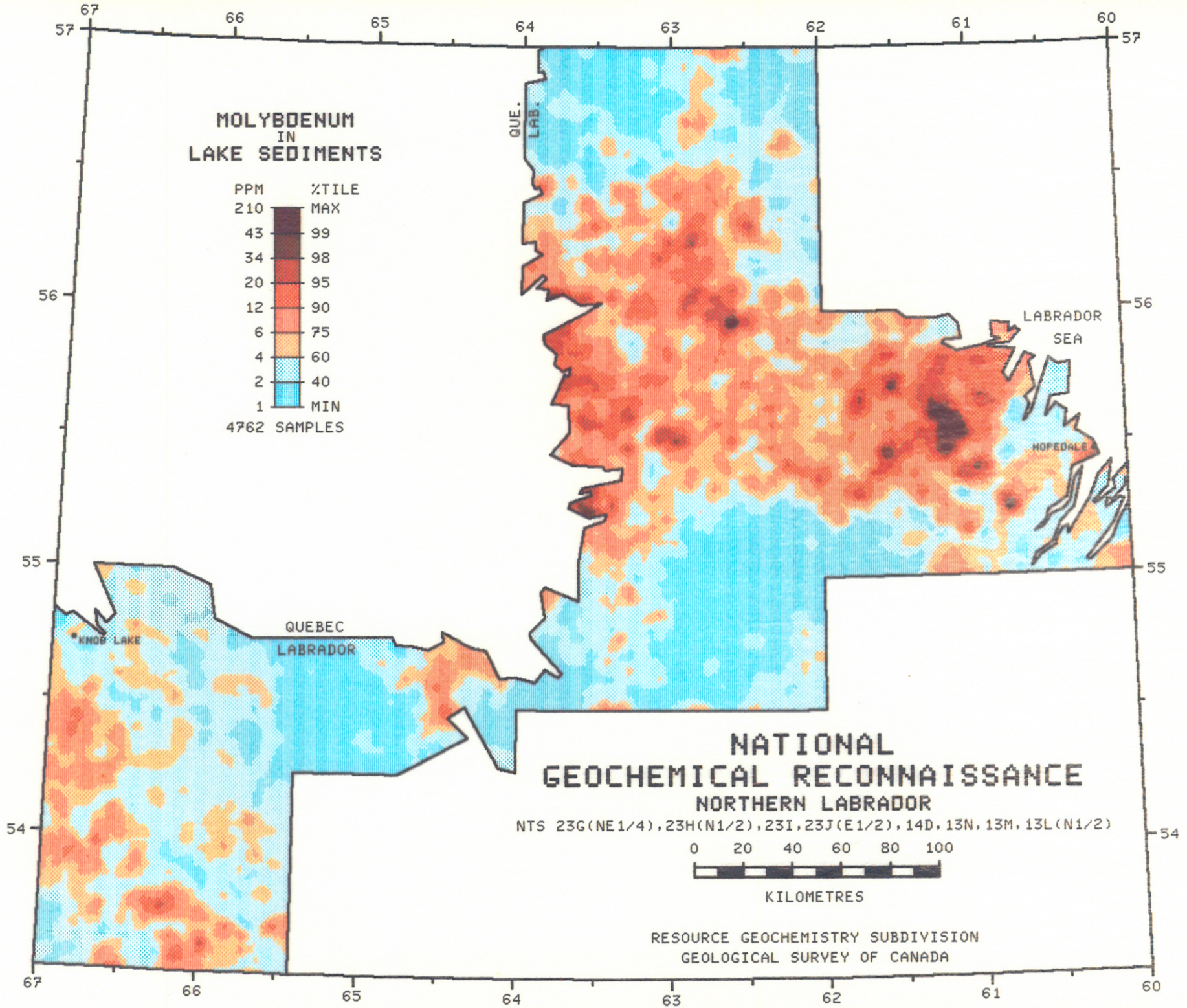


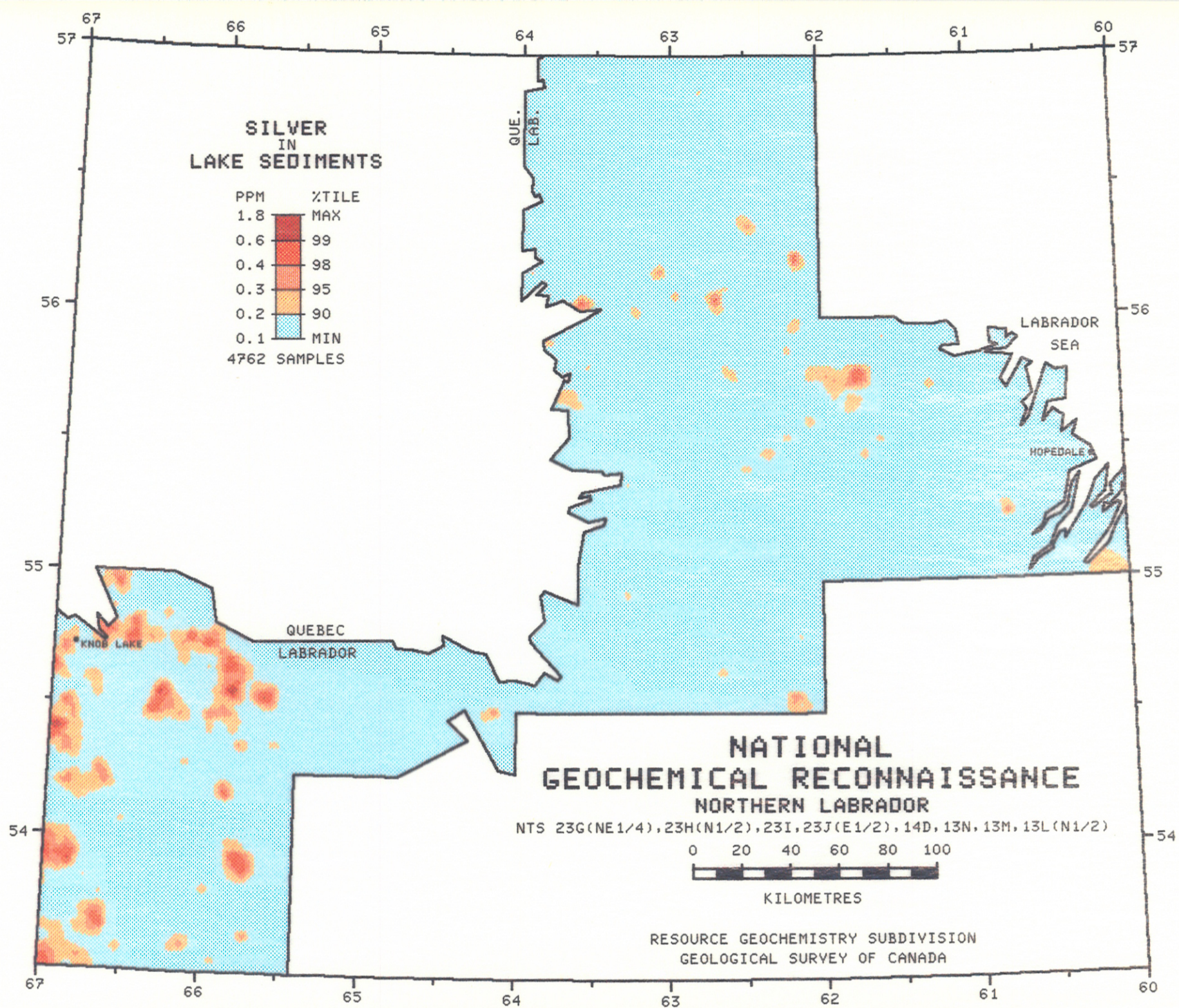


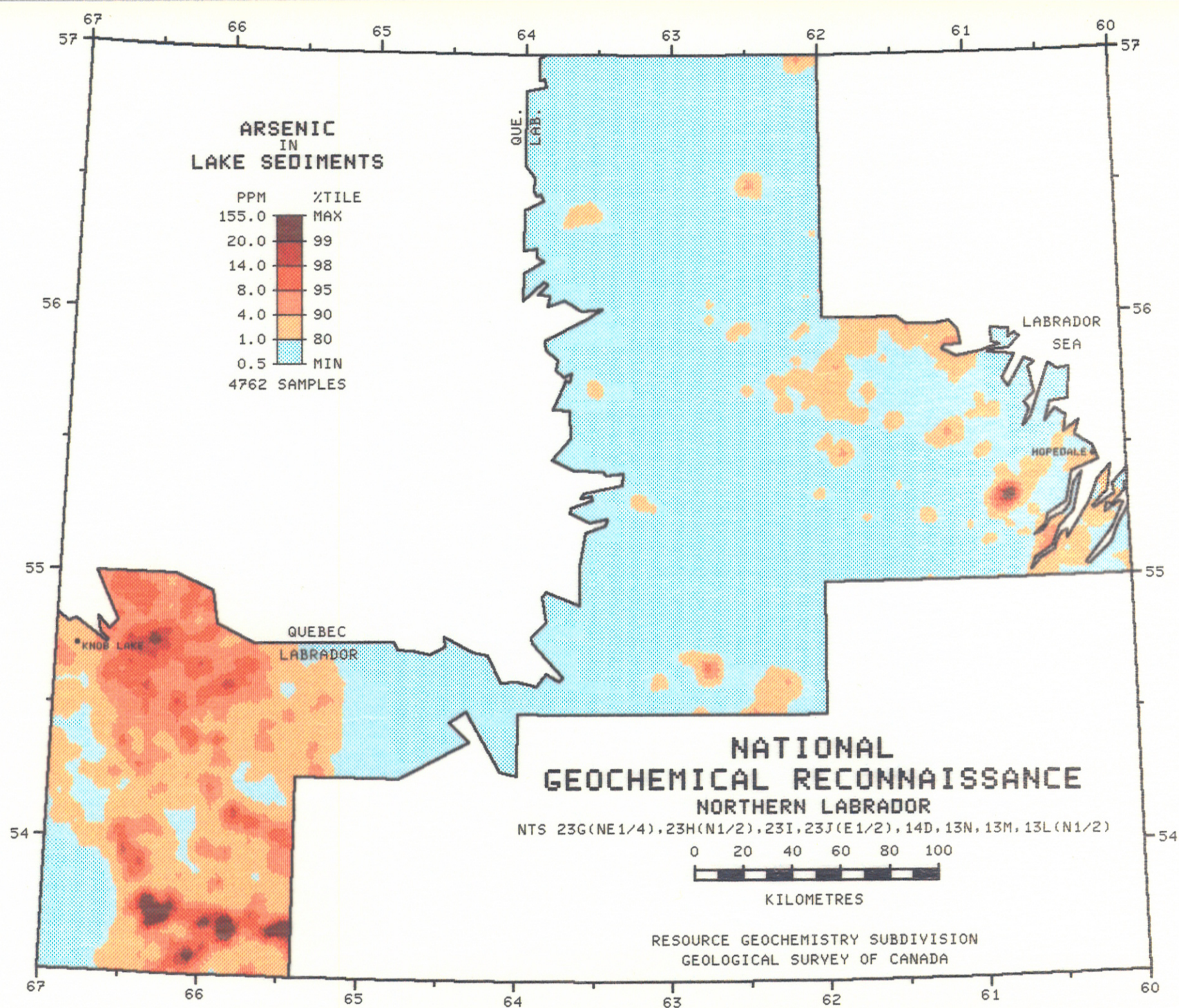


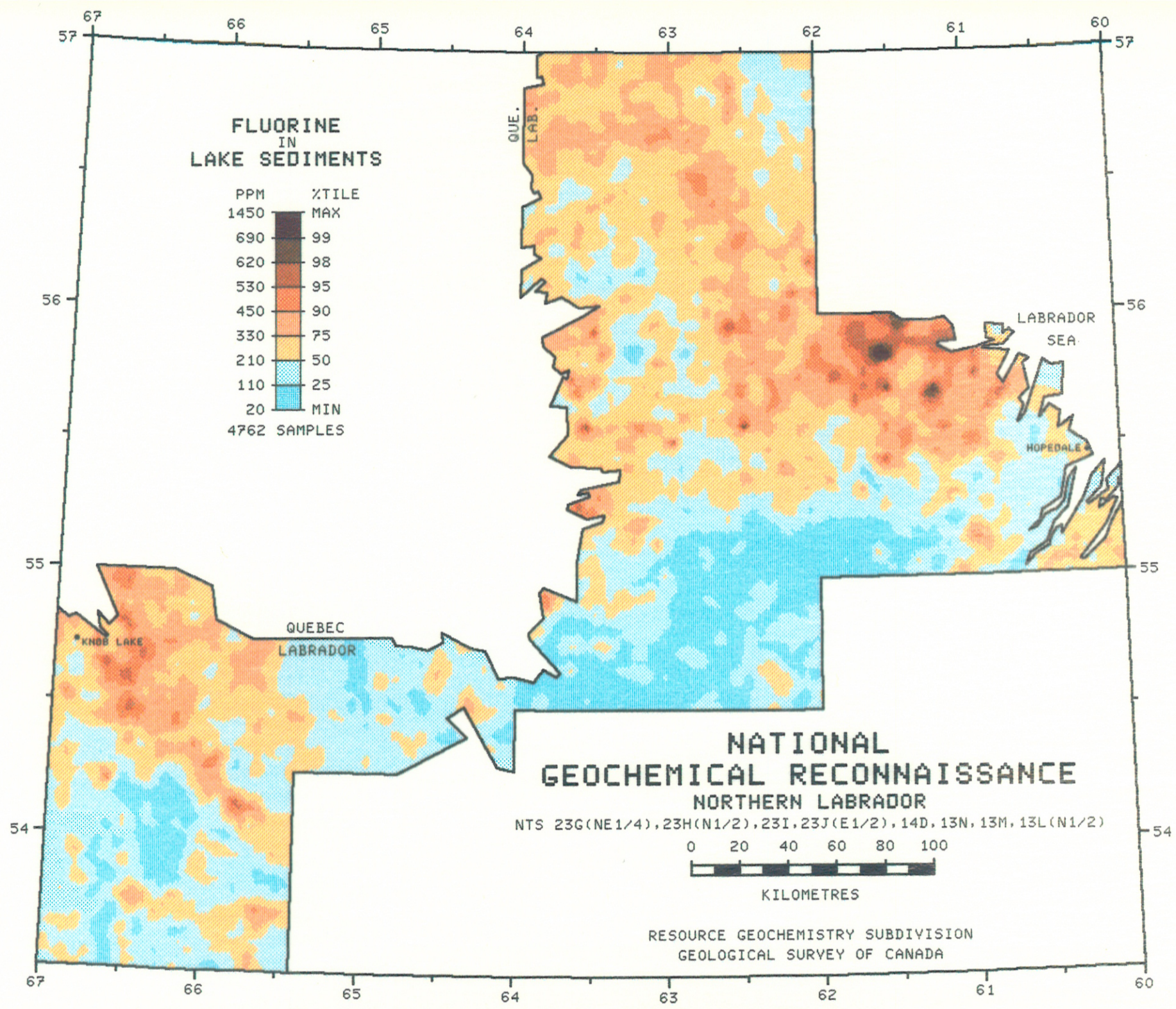


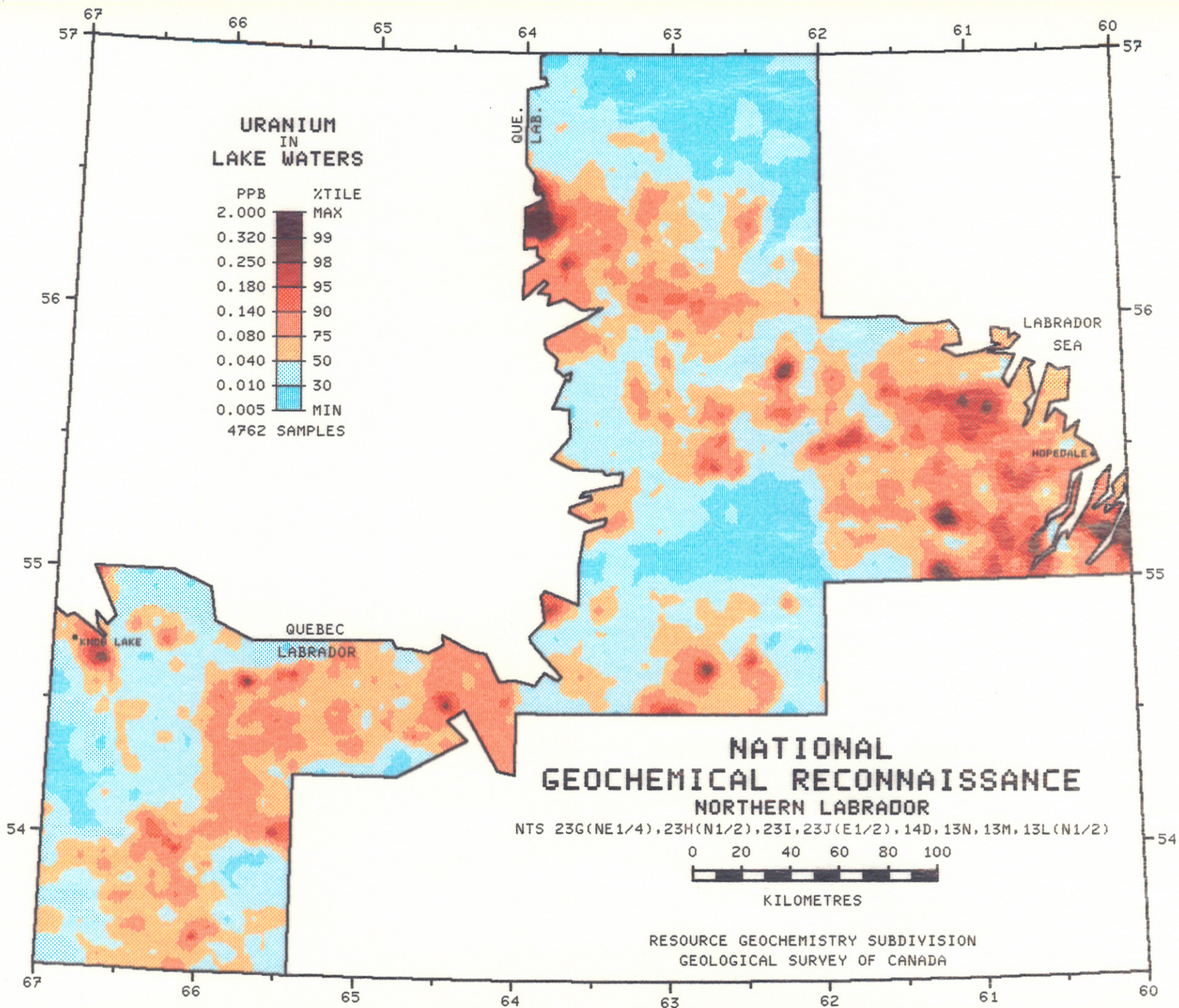


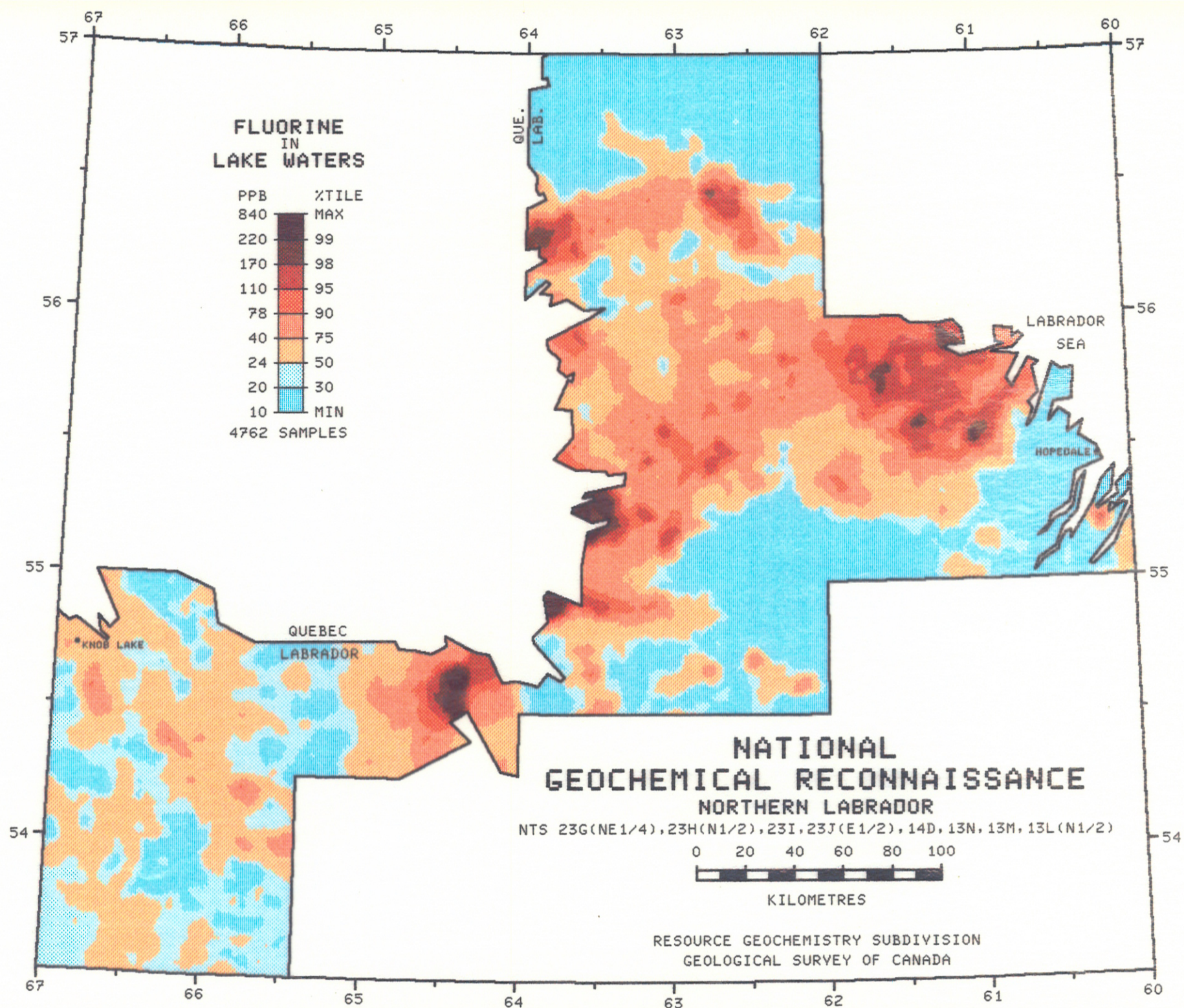


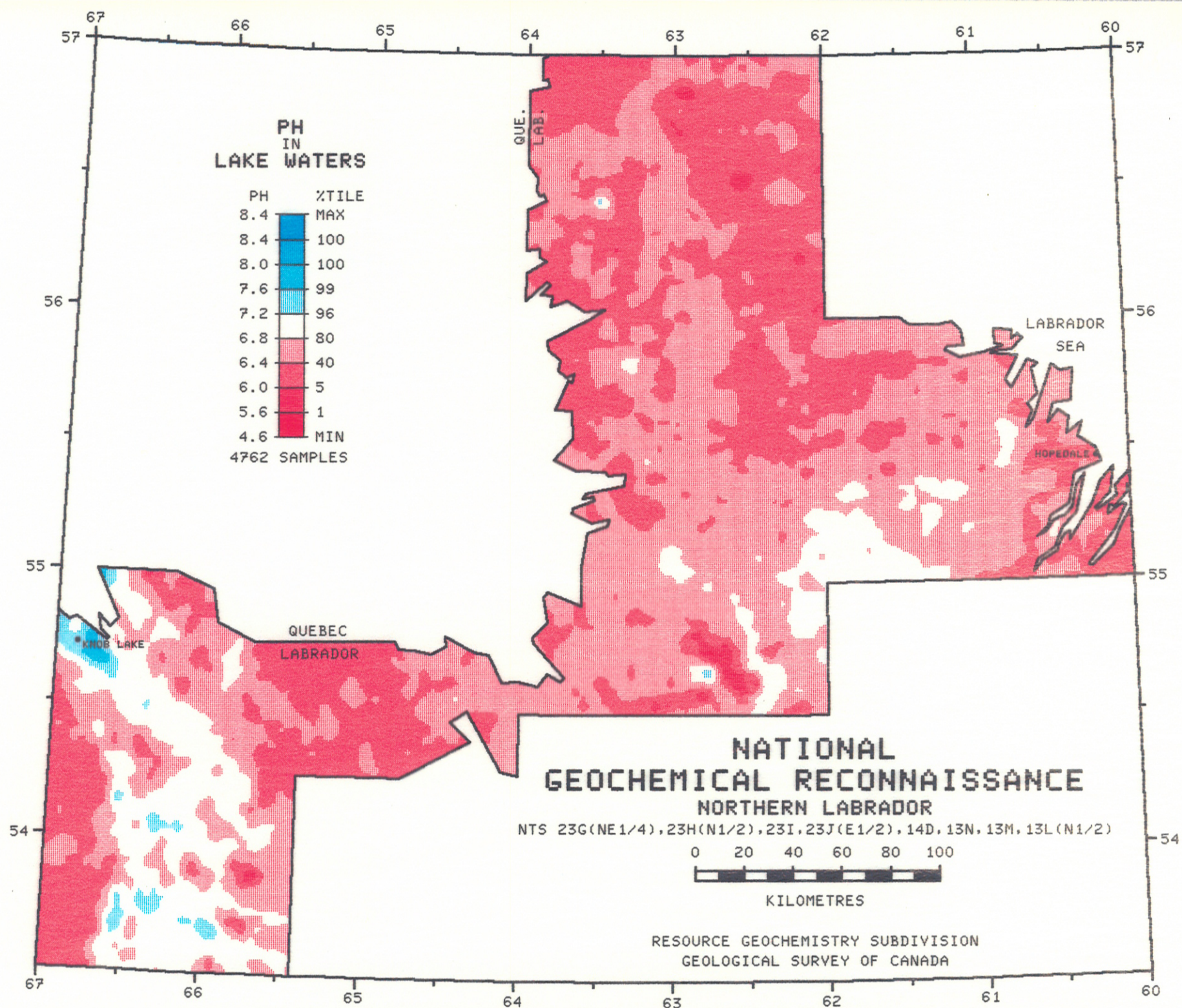




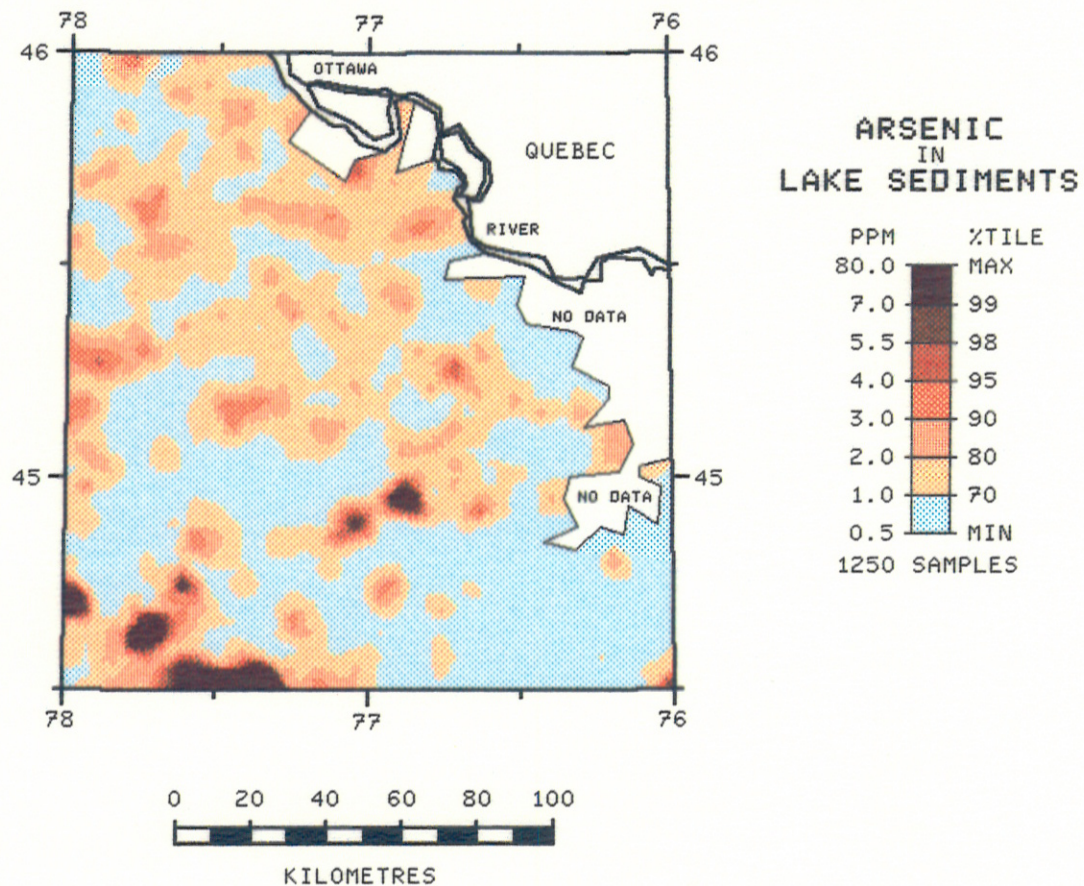








NATIONAL
GEOCHEMICAL RECONNAISSANCE
ONTARIO
NTS 31C(N1/2), 31F



RESOURCE GEOCHEMISTRY SUBDIVISION
GEOLOGICAL SURVEY OF CANADA