

The regional geochemical trend map displayed above utilized a moving weighted average using an inverse distance function (1/d²) to filter out minor irregularities and emphasize broad-scale regional features. Single point anomalies may be suppressed or eliminated, however, geological units which are chemically enriched, or large metallic deposits undergoing weathering would be expected to produce identifiable anomalies.

SURFICIAL GEOLOGY

This legend is common to Open Files 1356 and 1357
 PROGLACIAL AND GLACIAL ENVIRONMENTS

- Glaciolacustrine Deposits:
- Varved or massive clay and silt
 - Fine Sands, sands, and deltaic sand
- Glaciofluvial and Ice Contact Deposits:
- Outwash sands and gravel
 - End moraine, interlobate moraine; sand, gravel and boulders
 - Esker or kame complex; sand, gravel, boulders
- Glacial Deposits:
- Predominantly clayey till
 - Predominantly silty to sandy till
- NONGLACIAL ENVIRONMENT
- Bedrock

Complexes: when two or more types of glacial or non-glacial environment are interspersed in a mosaic or repeating pattern, the relative dominant/subordinate amount of each type is indicated by sequential order. For example, Z/1 indicates predominantly silty to sandy till with lesser clayey till.

- SYMBOLS**
- Surficial geological boundary
 - Striae
 - Fluting, drumlin or drumlinoid ridge
 - Esker, kame or kame complex

Surficial geology derived from:
 Boissoneau, A.R. (1965), Map S465, Ontario Department of Lands, Forests,
 Prest, V.K., Grant, D.R., and Rampton, V.N. (1969), Glacial Map of
 Canada, Geological Survey of Canada, Map 1253A (Scale: 1:5 000 000).

Geological Survey of Canada
 Mineral Resources Division
 Exploration Geochemistry Subdivision

CONTRACTORS

Sample collection by SIAL Geophysique Inc., Montreal
 Sample preparation by Golder Associates, Ottawa

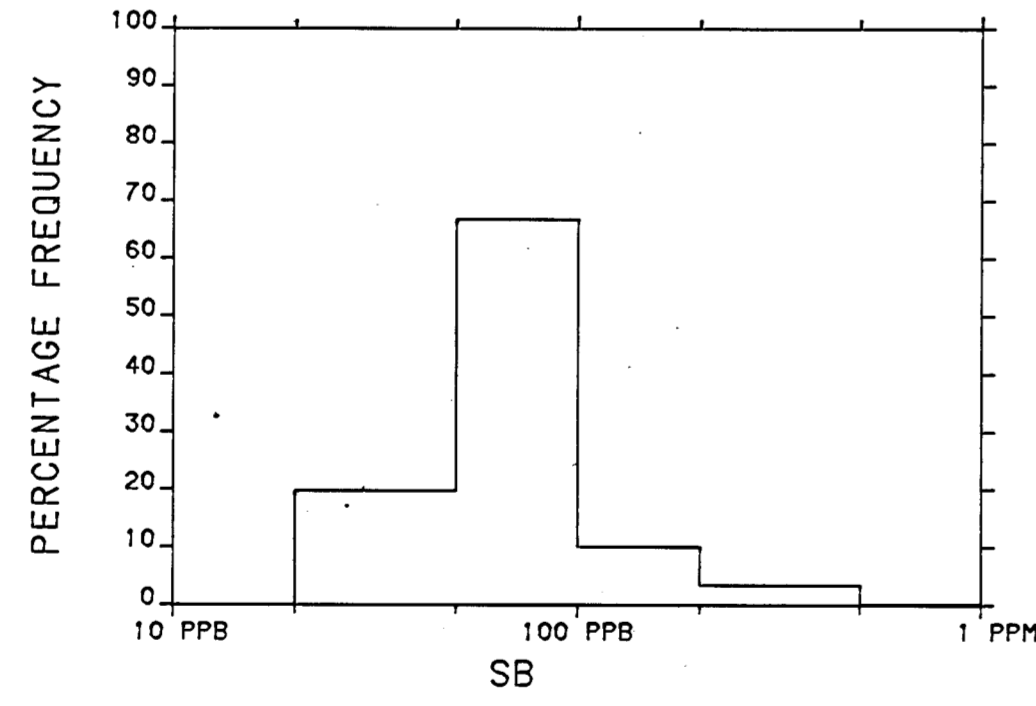
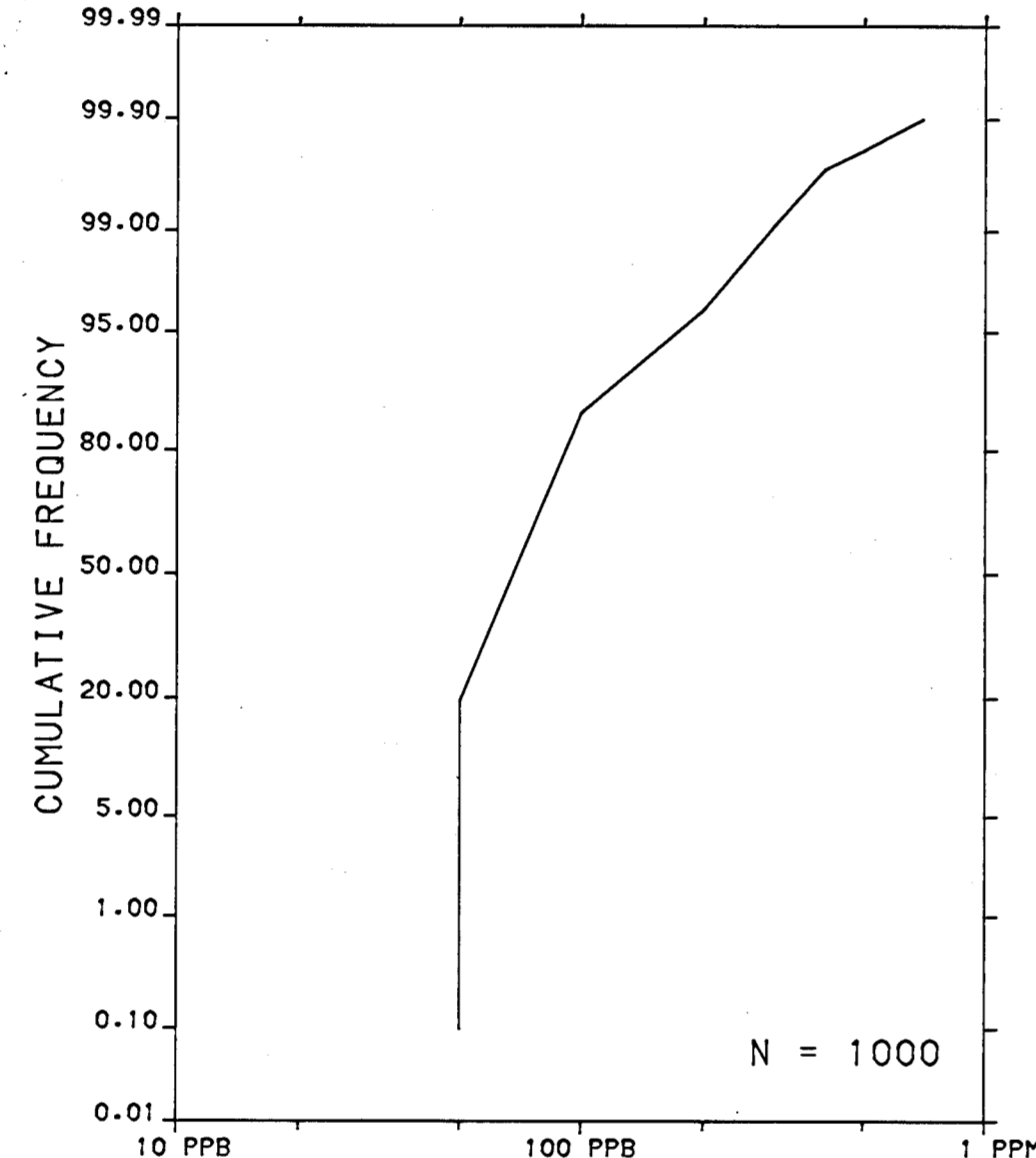
Sediment chemical analyses by Barringer Magenta Ltd., Rexdale, Ontario

Au analyses by Chemex Labs Limited, Vancouver
 Water chemical analyses by Barringer Magenta Laboratories (Alberta) Ltd., Calgary

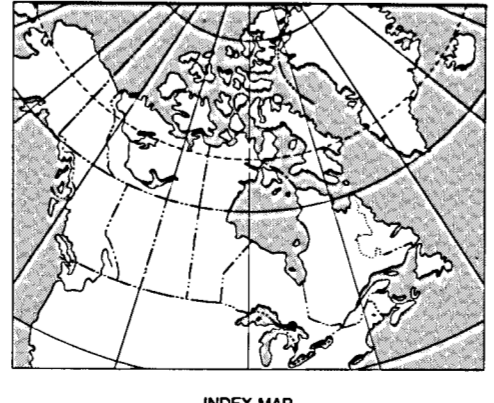
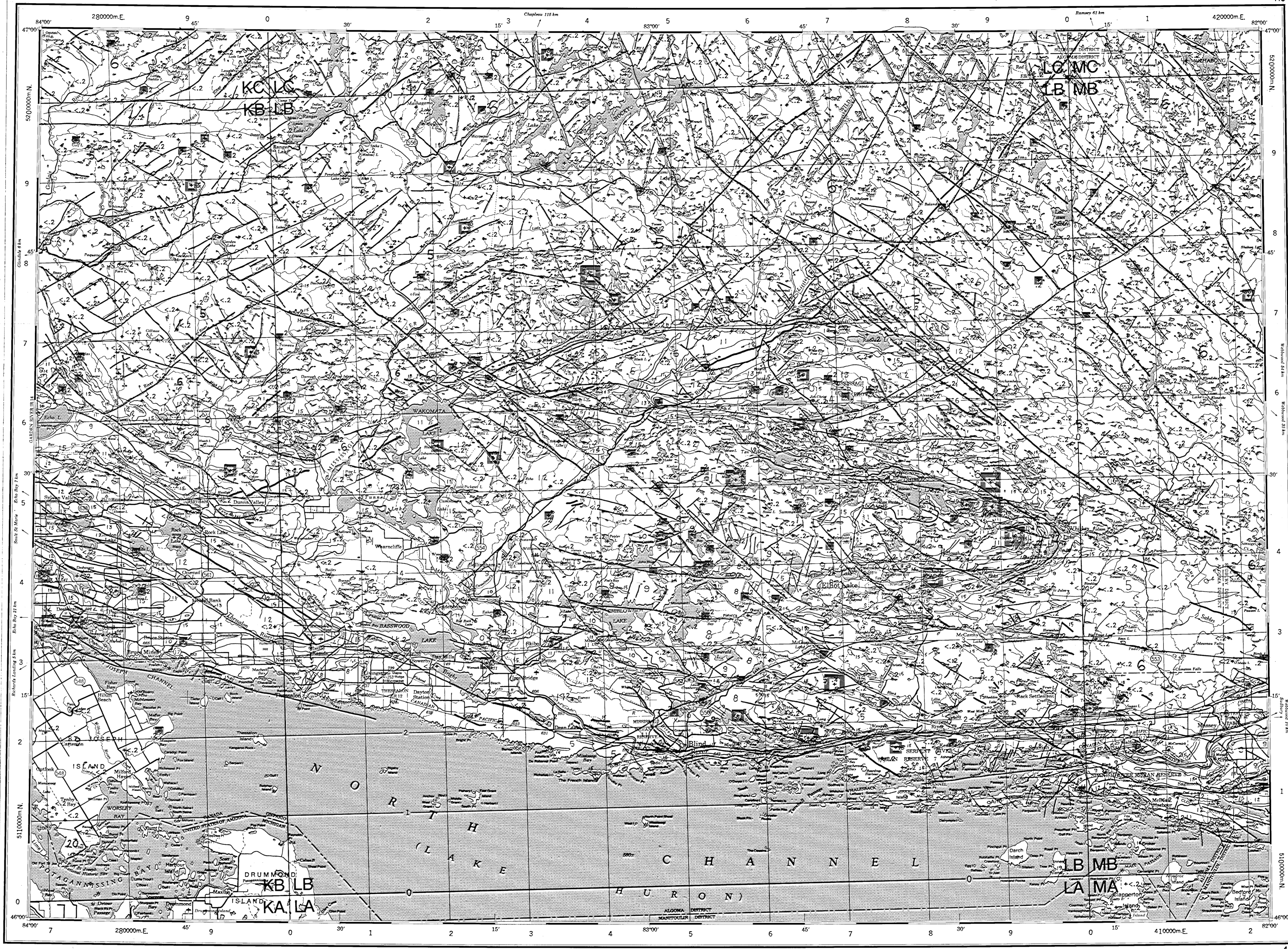
Contribution to Canada - Ontario Mineral Development Agreement 1986 - 1990, a subsidiary agreement under the Economic and Regional Development Agreement. Project funded by the Geological Survey of Canada.

Ministry of Northern Development and Mines
 Energy, Mines and Resources Canada

Canada



CONCENTRATION	FREQUENCY
.4 to .7	N= 8(0.8%)
.3	N= 27(2.7%)
.2	N= 100(10.0%)
<.2	N= 865(86.5%)



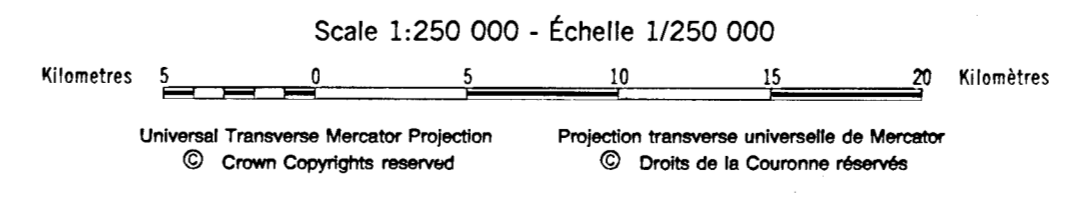
Copies of map material and listings of field observations, analytical data and methods, from which the open file was prepared, are available from:

K.G. Campbell Corporation
 880 Wellington St.
 Bay 238
 Ottawa, Ontario
 K1R 6C7

Digital data are available on IBM-PC compatible diskette from:

Geological Survey of Canada
 Publications Distribution
 501 Booth St.
 Ottawa, Ontario K1A 0E8
 Tel: (613)995-4342

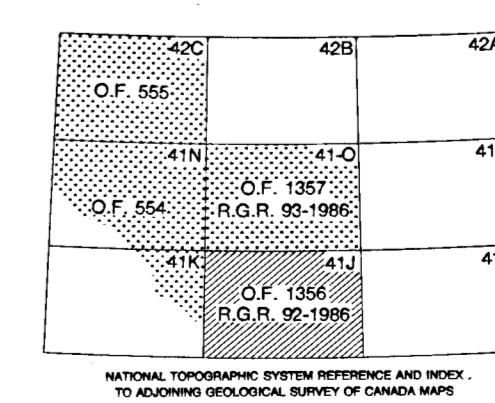
ANTIMONY (ppm)
 LAKE SEDIMENTS
 GSC OPEN FILE 1356
 REGIONAL GEOCHEMICAL RECONNAISSANCE MAP 92-1986
 CANADA - ONTARIO
 MINERAL DEVELOPMENT AGREEMENT (1986-1990)
 LAKE SEDIMENT AND WATER GEOCHEMICAL SURVEY
 CENTRAL ONTARIO, 1986



Elevation in feet above mean sea level

Mean magnetic declination 1987, 7°48' West, increasing 10.6' annually. Readings vary from 8°33'W in the SE corner to 7°00'W in the NW corner of the map area

Base map at the same scale published by the Surveys and Mapping Branch in 1979



- LEGEND**
- PALEOZOIC
- SILURIAN
- 20 SCP* Limestone, shale
- UPPER CAMBRIAN AND ORDOVICIAN
- 19 OCCS Limestone, shale, sandstone, includes Munising Formation; sandstone
- PRECAMBRIAN AND ARCHEAN
- 18 LPAD Diabase, gabbro, diorite
- PRECAMBRIAN
- LATE PRECAMBRIAN
- 17 LPAC Fenite, ijolite, pyroxenite, carbonatite
- MIDDLE TO LATE PRECAMBRIAN
- 16 MPCC Croker Island Complex; granite, syenite, diorite, gabbro, Outier Pluton; granite, quartz monzonite, granodiorite, trondhjemite, pegmatite
- MIDDLE PRECAMBRIAN
- 15 MPND Nipissing Diabase; diabase, gabbro, metagabbro, granophyre
- HURONIAN SUPERGROUP
- COBALT GROUP
- 14 MPBR Bar River Formation; quartzite
 - 13 MPGL Gordon Lake Formation; siltstone, argillite, quartzite
 - 12 MPL Lorrain Formation; quartzite, arkose, conglomerate
 - 11 MPG Gowanda Formation; conglomerate, argillite, greywacke, quartzite, siltstone
- QUIRKE LAKE GROUP
- 10 MPQL Serpent Formation; quartzite, conglomerate, Espanola Formation; limestone, dolomite, calcareous siltstone, Bruce Formation; conglomerate
- HOUGH LAKE GROUP
- 9 MPHLL Aweres Formation; conglomerate, arkose, quartzite, Mississagi Formation; quartzite, conglomerate, Pecora Formation; argillite, siltstone, Ramsay Lake Formation; conglomerate
- ELLIOT LAKE GROUP
- 8 MPGL Matinenda Formation; quartzite, arkose, conglomerate, uraniferous conglomerate
 - 7 MPVB Basalt, andesite, amphibolite, gabbro, anorthosite, ultramafic rocks and minor rhyolite
- ARCHEAN
- 6 AGM Massive felsic to intermediate plutonic rocks; granite, granodiorite, tonalite, quartz monzonite, monzodiorite, pegmatite
 - 5 AGN Foliated to gneissic felsic to intermediate plutonic rocks; granite, granodiorite, tonalite, quartz monzonite, diorite, migmatite
 - 4 AUB Gabbro, diorite
 - 3 ACP Conglomerate, greywacke, arkose, quartzite, siltstone, argillite, chert
 - 2 AMVF Felsic to intermediate metavolcanics
 - 1 AMVB Mafic to intermediate metavolcanics; includes flows, minor mafic pyroclastics and interflow sediments.
- IF Iron formation
- *A mnemonic code assigned to rock types and recorded as part of field observations.
- Geological boundary:
- Fault:
- No analytical results:

The geology base and legend for these geochemical maps were derived from: Geology - Saint-St. Marie - Elliot Lake, Map 2419 Geological Compilation Series, Ontario Department of Mines, 1:253 440.
 McCrank, G.F.D., Misura, J.D., and Brown, P.A. (1979): Geology - Plutonic Rocks in Ontario, Geological Survey of Canada Map 1533A, to accompany GSC Paper 80-23.

ANTIMONY (ppm)
 LAKE SEDIMENTS
 GSC OPEN FILE 1356
 CENTRAL ONTARIO, 1986
 4 of 25

This map has been reprinted from a scanned version of the original map. Reproduction par numérisation d'une carte sur papier.