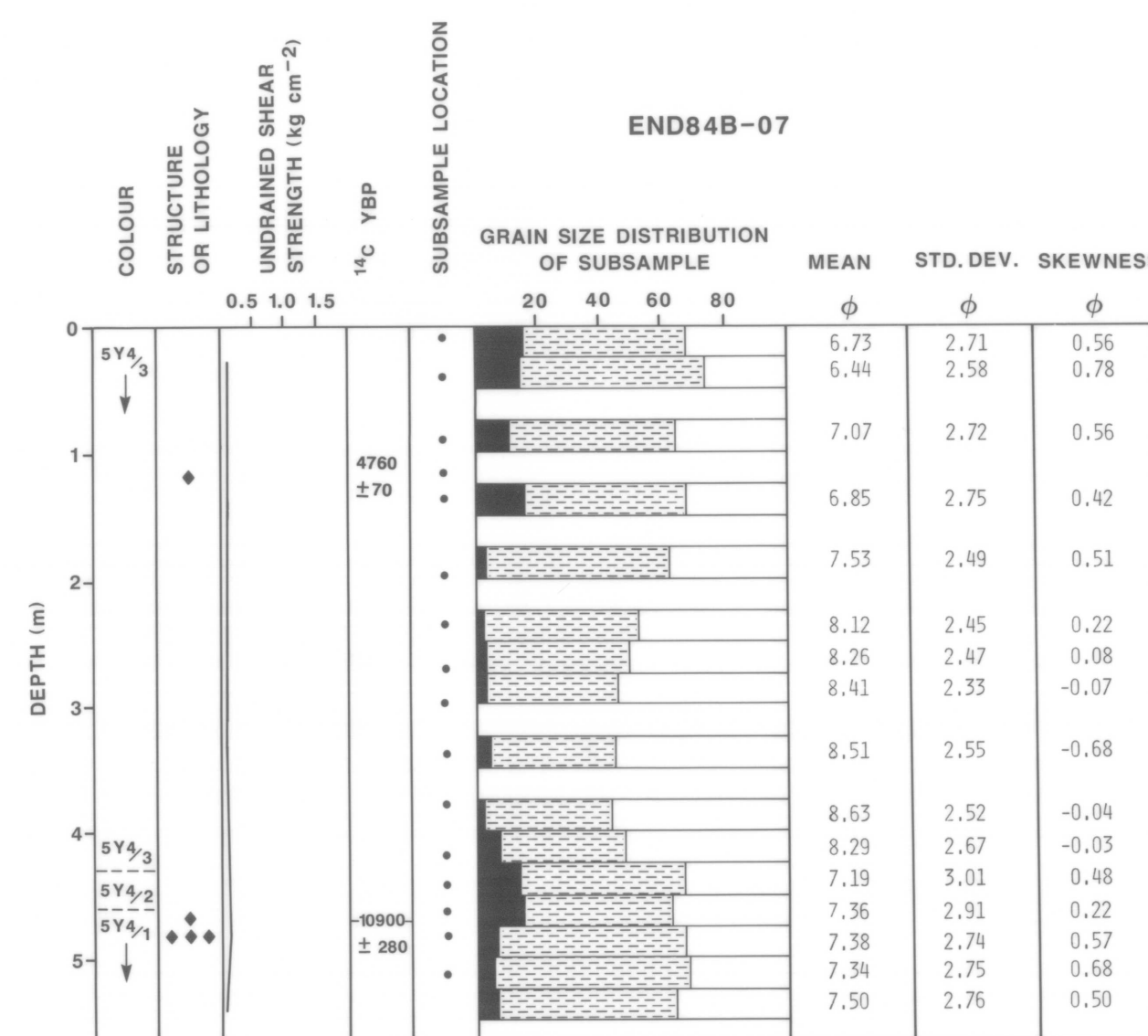
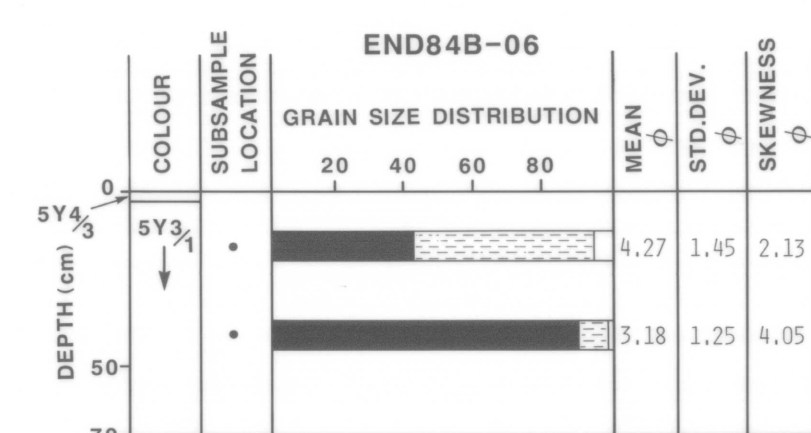
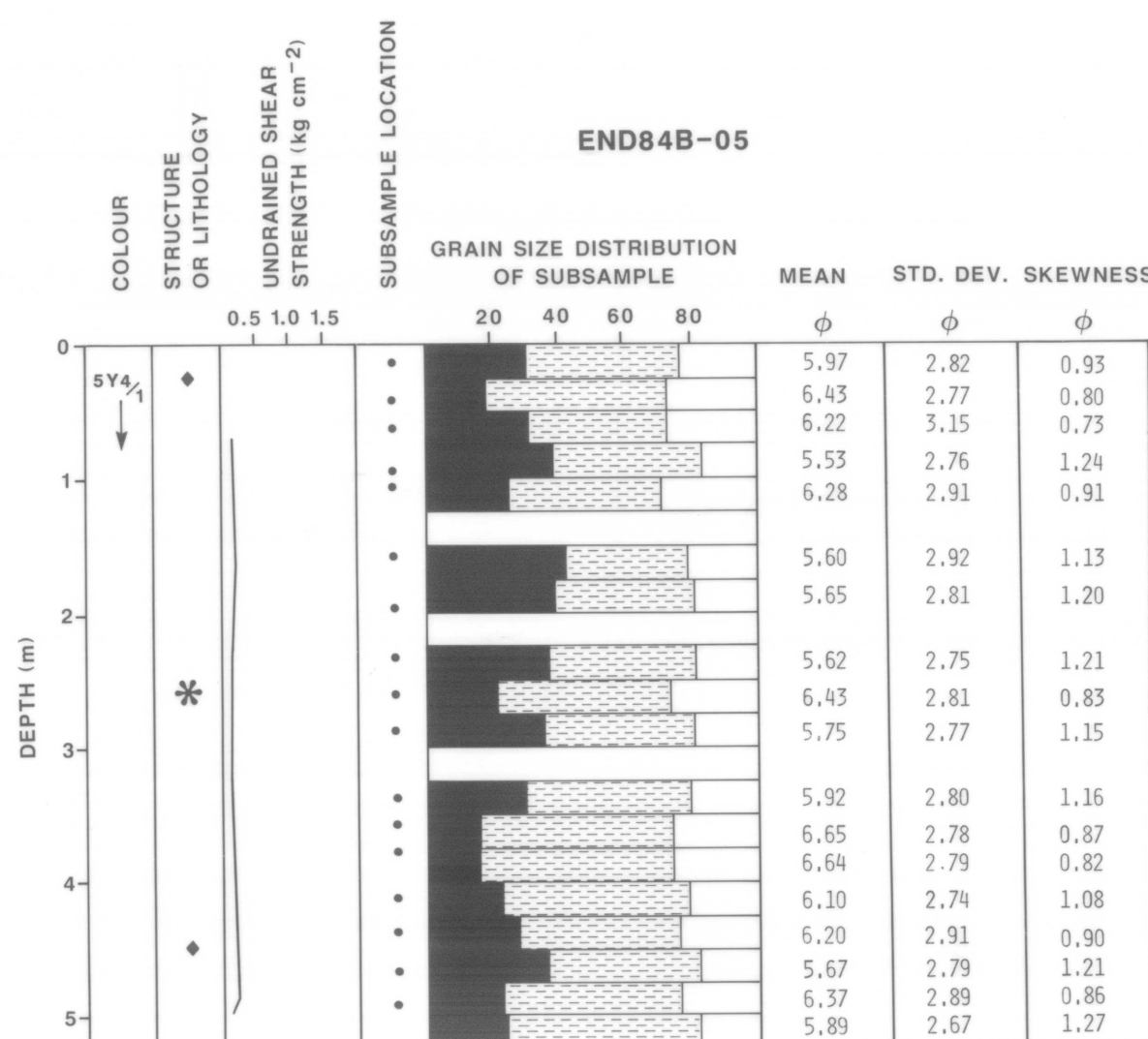
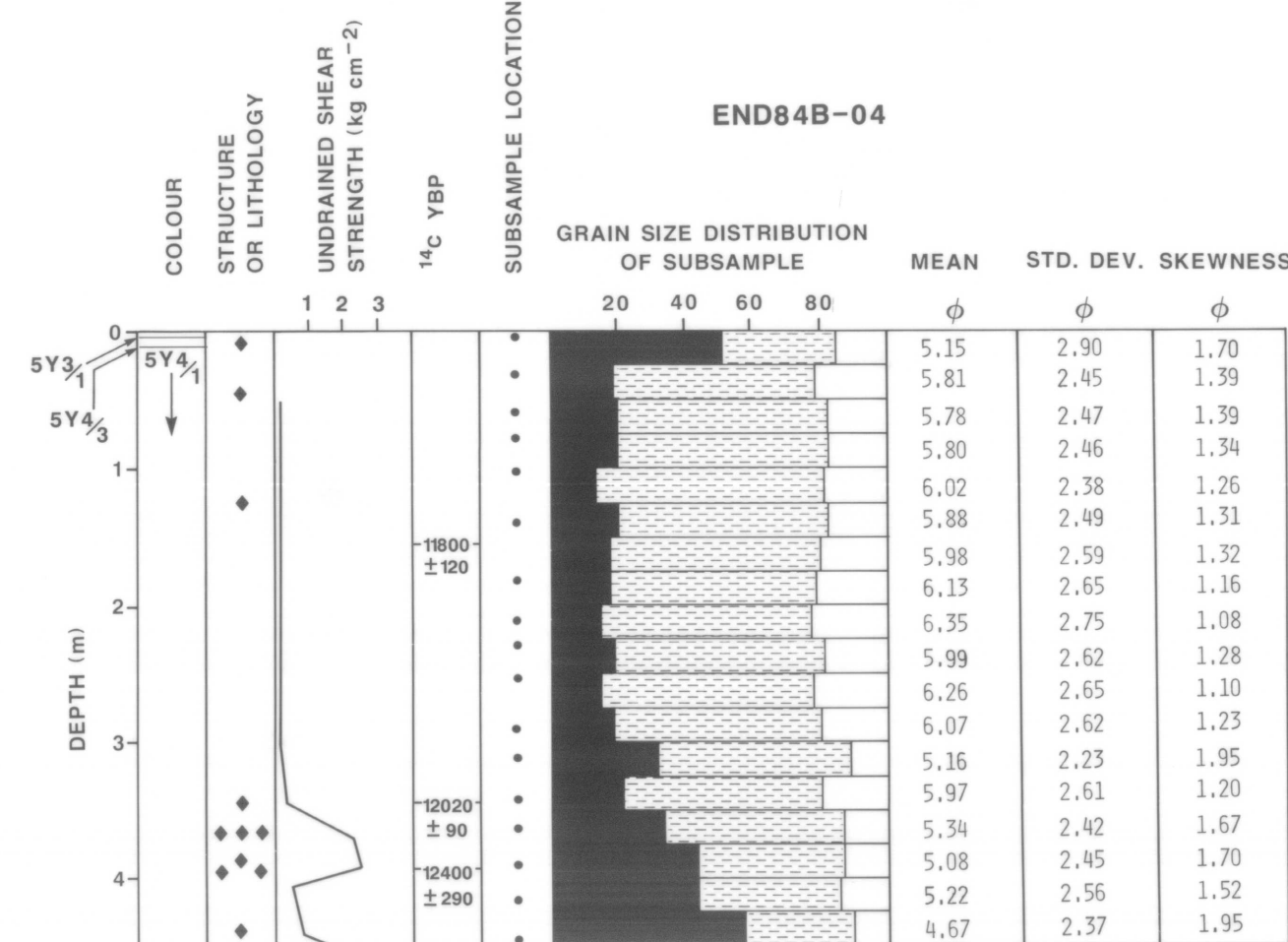
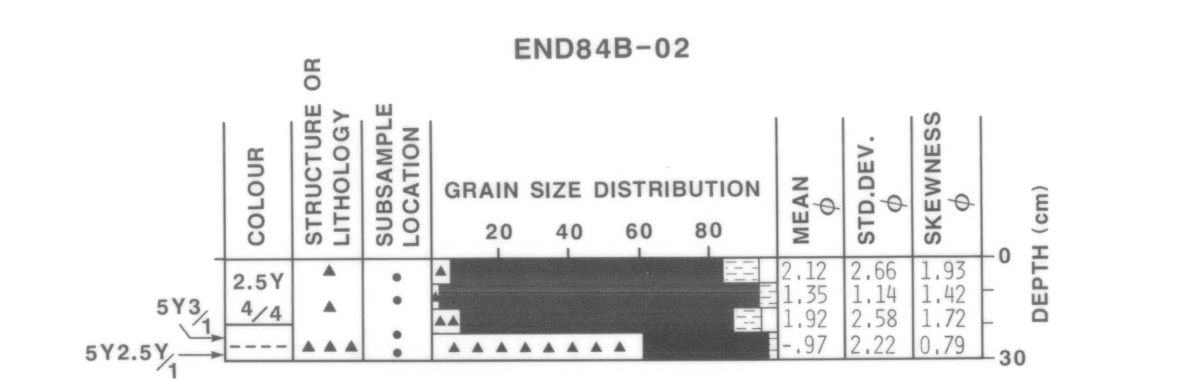
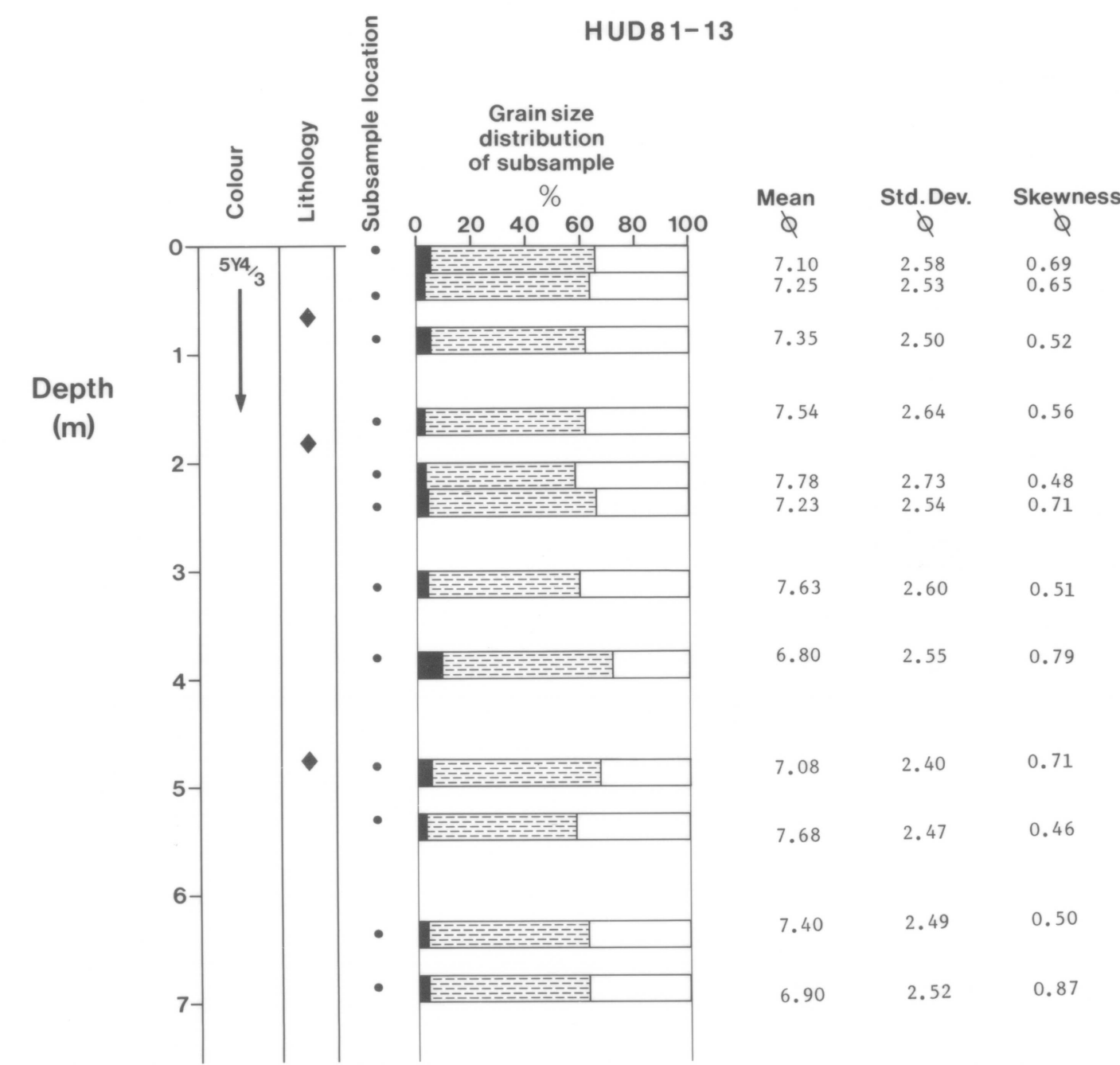
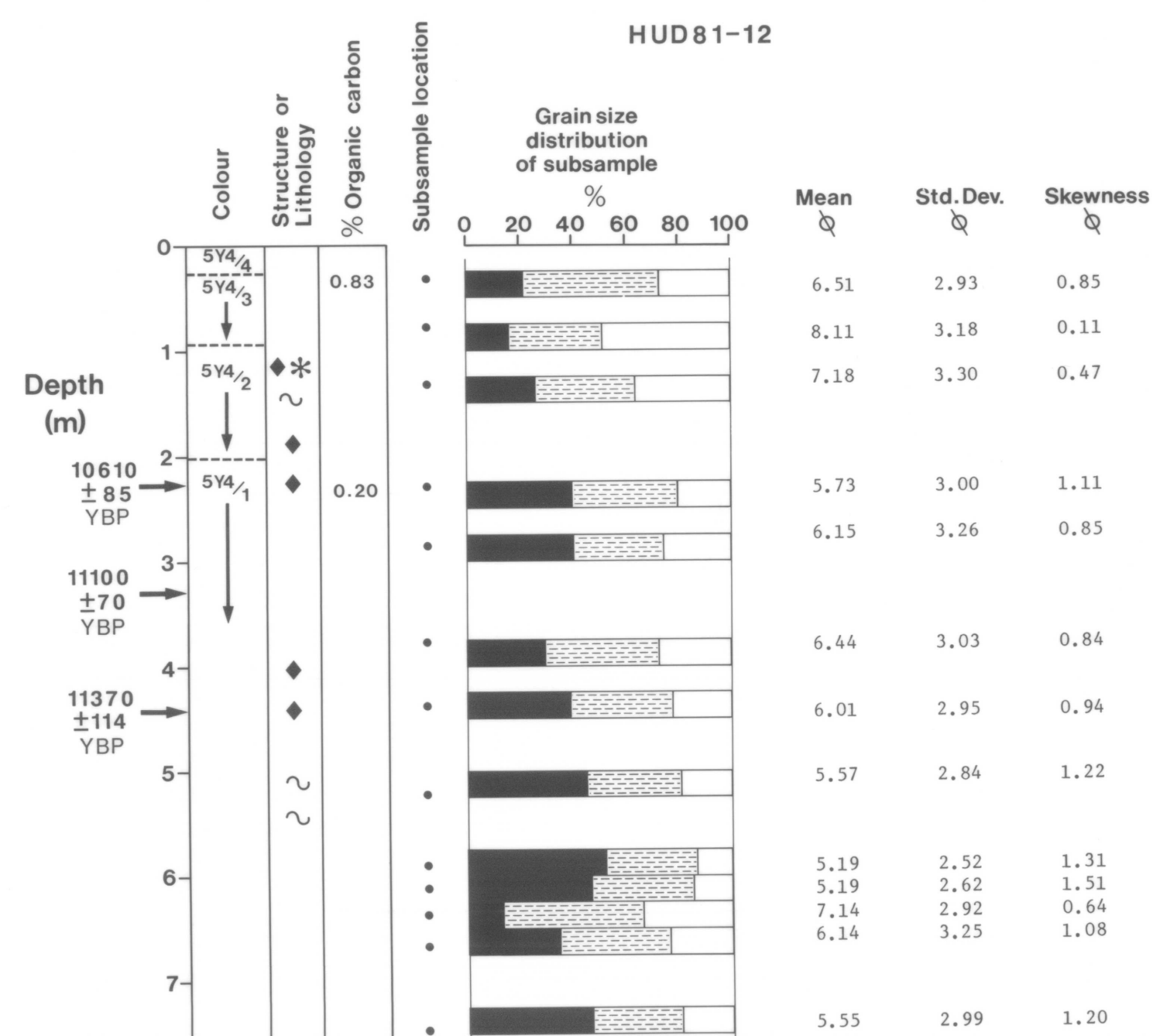


# LITHOLOGY OF CORES FROM MORESBY TROUGH.

(FOR LOCATIONS SEE FIG. 3)



## LEGEND

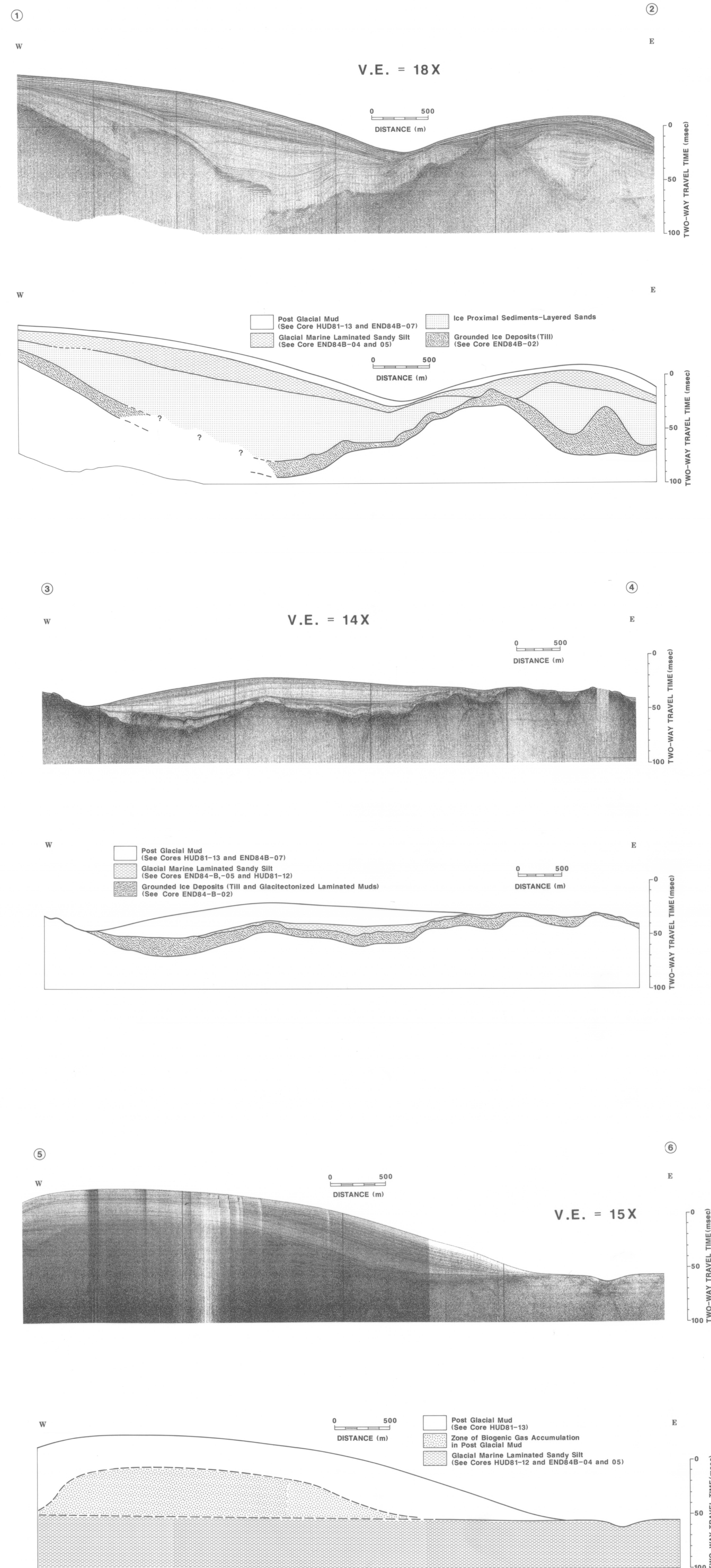
- ~ BURROW OR BIOTURBATION
- ♦ SHELLS OR SHELL FRAGMENTS
- LITHOLOGIC CONTACT
- \* WOOD FRAGMENT
- ▲ GRAVEL

- GRAVEL
- SAND
- SILT
- CLAY

## RELATED PUBLICATIONS

- Conway, K.W. and Luternauer, J.L.  
1985: Evidence of ice rafting and tractive transfer in cores from Queen Charlotte Sound, British Columbia; in Current Research, Part A, Geological Survey of Canada, Paper 85-1A, p. 703-708.
- King, L.H. and Pader, G.B.  
1985: Wisconsinian glaciation of the continental shelf - southeast Atlantic Canada; Geological Survey of Canada Open File Report 1126, 114 p.
- Luternauer, J.L. and Murray, J.W.  
1983: Late Quaternary morphologic development and sedimentation, central British Columbia continental shelf; Geological Survey of Canada, Paper 83-21, 38 p.
- Parrot, D.R., Dodds, D.J., King, L.H. and Simpkin, P.C.  
1980: Measurement and evaluation of the acoustic reflectivity of the sea floor; Canadian Journal of Earth Sciences, v. 17, p. 722-737.
- Vall, P.R.  
1977: Seismic recognition of depositional facies on slopes and rises, in AAPG Continuing Education Course Note Series, U.S., v. 5, p. P1-P9.

## SELECTED HUNTEC DEEP-TOW SEISMIC PROFILES AND TENTATIVE INTERPRETATIONS (FOR LOCATIONS SEE FIG. 3).



SHEET 2 OF 2

GEOLOGICAL SURVEY OF CANADA,  
E.M.R., OPEN FILE 1420